



1700 MacCorkle Ave SE
P.O. Box 1273
Charleston, WV 25325

January 25, 2017

WV DEP – Office of Oil and Gas
601 57th Street SE
Charleston, WV 25304

Enclosed for submittal are forms WR-38 (Affidavit of Plugging and Filling Well) and WR-34 (Discharge Monitoring Report) for Columbia's Ripley storage well 7300 (API 035-00506). Also attached is a "post plugging" wellbore diagram and a copy of the cement bond log.

If questions arise, feel free to contact me.

Regards,

A handwritten signature in black ink that reads "Jim Amos".

Jim Amos
Senior Well Services Engineer
Columbia Gas Transmission, LLC
james_amos@transcanada.com
off: 304-373-2412
cell: 304-483-0073

RECEIVED
Office of Oil and Gas
FEB 09 2017
WV Department of
Environmental Protection

04/14/2017

STATE OF WEST VIRGINIA
DEPARTMENT OF ENVIRONMENTAL PROTECTION
OFFICE OF OIL AND GAS

AFFIDAVIT OF PLUGGING AND FILLING WELL

AFFIDAVIT SHOULD BE IN TRIPLICATE, one copy mailed to the Department, one copy to be retained by the Well Operator and the third copy (and extra copies if required) should be mailed to each coal operator at their respective addresses.

Farm name: Waskey, J. H., ETAL Operator Well No.: 7300

LOCATION: Elevation: 884.8 ft (269.7 m) Quadrangle: Sandyville, WV
District: Ravenswood County: Jackson
Latitude: 1323 Feet South of 38 Deg. 54 Min. 00 Sec.
Longitude: 1796 Feet West of 81 Deg. 40 Min. 30 Sec.

Well Type: OIL _____ GAS X (storage)

Company Columbia Gas Transmission, LLC Coal Operator not operated
1700 MacCorkle Ave SE or Owner _____
Charleston, WV 25325-1273 _____
Agent Paul Amick Coal Operator _____
Permit Issued Date 8/4/2016 or Owner _____

AFFIDAVIT

STATE OF WEST VIRGINIA,
County of Wood ss:

James Amos and Steven Simmons being first duly sworn according to law depose and say that they are experienced in the work of plugging and filling oil and gas wells and were employed by the above named well operator, and participated in the work of plugging and filling the above well say that said work was commenced on the 16 day of December, 2016, and the well was plugged and filled in the following manner:

RECEIVED
Office of Oil and Gas
FEB 09 2017
WV Department of
Environmental Protection

TYPE	FROM	TO	PIPE REMOVED	LEFT
cement	surface	2191	none	8-5/8", 7" and 4-1/2"
cement	2191'	3290'	none	7" and 4-1/2"
cast iron cement retainer	3290'	3292'	none	7" and 4-1/2"
cement	3292'	4665'	none	7" and 4-1/2"
cast iron cement retainer	4665'	4667'	none	7" and 4-1/2"
cement	4667'	4963'	none	7" and 4-1/2"
cement	4963'	5101' (TD)	none	4-1/2"

Description of monument: 7" steel casing with API number tack welded and that the work of plugging and filling said well was completed on the 10 day of January, 2017.

* Refer to attached post P&A wellbore diagram

And further deponents saith not.

James E Amos
Steven Simmons

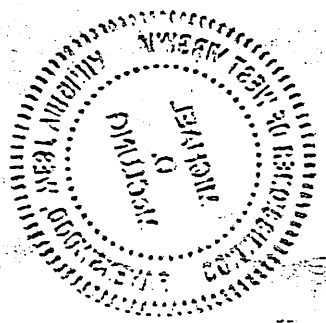
Sworn and subscribe before me this 1st day of February, 2017

My commission expires: 5-7-2017

[Signature]
Notary Public

Affidavit reviewed by the Office of Oil and Gas: [Signature] Title: 2-2-17

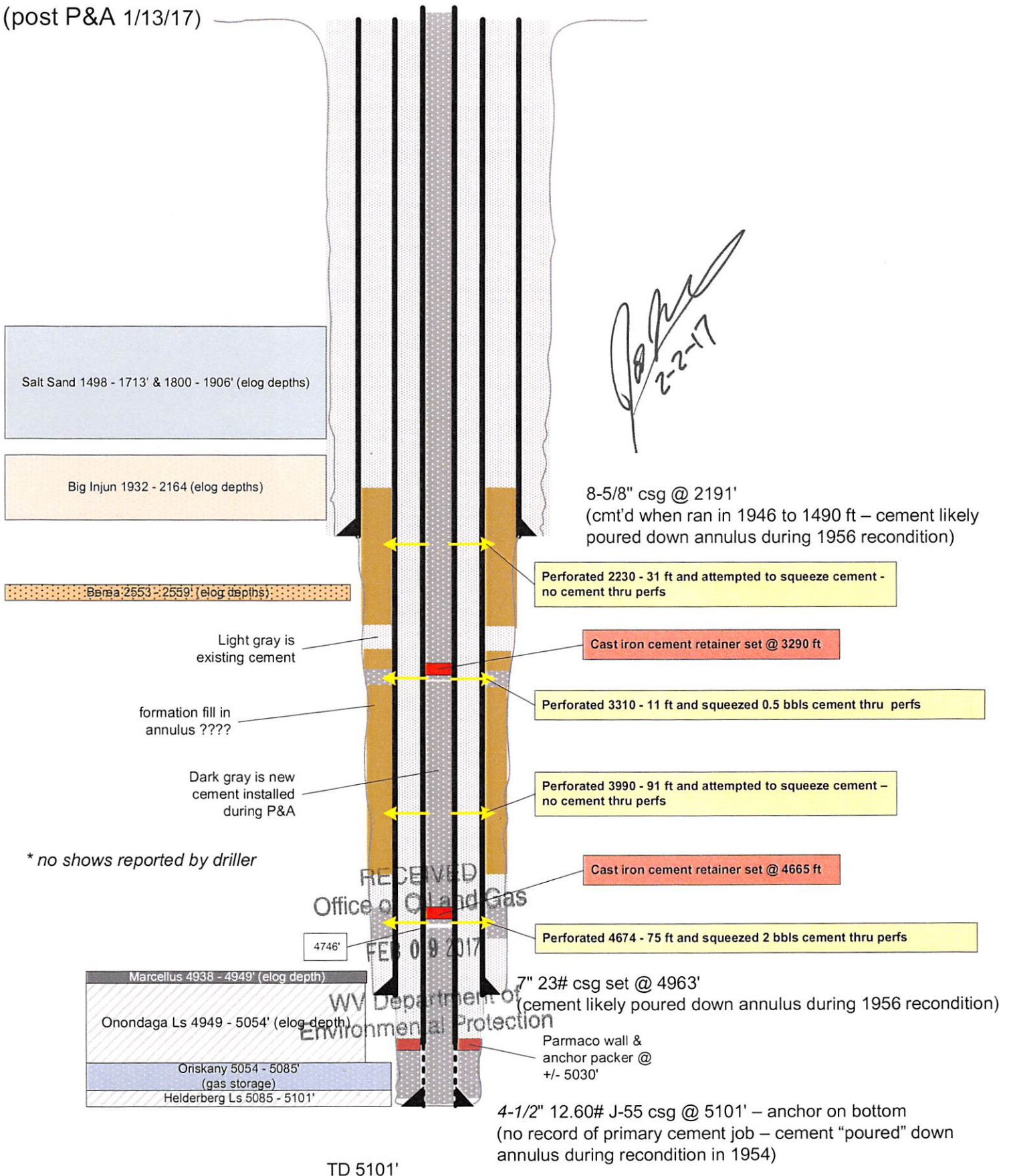
04/14/2017



[Faint handwritten signatures and illegible text]

RIPLEY 7300
API 47-035-00506
 (post P&A 1/13/17)

** not to scale **



04/14/2017

Date	Hours	Gas Lost (mcf)	Rig Contractor
12/7/2016		Met with environmental inspector and dirt contractor.	Ellison Dozer & Backhoe
12/8/2016		Ellison began working lease road and installing silt sock.	Ellison Dozer & Backhoe
12/9/2016		Ellison began working on location.	Ellison Dozer & Backhoe
12/15/2016		Ellison graveled location and built fence around LOD. MI 2 water tanks.	Ellison Dozer & Backhoe
12/16/2016		CSI MIRU service rig. Ellison MI and spotted flowback tank, BOPs, rolloff tank and tubing trailer. Stricklin filled fresh water tank. Nuverra hauled in kill mud.	CSI
12/17/2016		SICP: 1480 psig. MIRU CSI pump equipment. Killed well with 10 bbl LCM pill and 43 bbls of 10 ppg polymer mud (stage 1). Shut down and waited 3 hrs. SICP: 2500 psig. Bled well down to 0 psig, pumped 20 bbls mud and shut well in.	CSI
12/18/2016		SICP: 10 psig. Blew well down and topped off with mud. Installed and function tested 5M double ram and annular BOPs. Moved tubing trailer offsite, hauled rock for location and moved trailer back in.	CSI
12/19/2016		SICP: 0 psig. Topped well off with 2 bbls of fluid. Attempted to run broach, but was unable to get tool through welds in flow tee. Tore wellhead down, but was still unable to get broach down well. Well stayed full all day.	CSI
12/20/2016		SICP: 0 psig. Topped well off with 1 bbl fluid. MIRU BALS and ran cement bond log from 5040' to surface. RDMO BALS and rigged up to run packer to pressure test casing.	CSI
12/21/2016		SICP: 0 psig. RIH with 70 jts of 2-3/8" EUE tubing, installed packer and ran 10 more jts tubing. MIRU CSI pump truck and pressure tested wellhead, annular BOP and pipe rams to 300/2000 psig. Pulled 10 jts tubing, removed packer, RBH with another 84 jts tubing and shut down for night.	CSI
12/22/2016		SICP: 0 psig. Finished running tubing to TD @ 5102'. Rigged up CSI cementer and pumped 5 bbls fresh water and 6.1 bbls Type 1 cement (15.6 ppg). Bled 13 jts tubing, reverse-circulated 40 bbls fresh water, pulled 5 more jts tubing and shut well in.	CSI
12/27/2016		SITP: 0 psig, SICP: 0 psig. RIH with 2-3/8" tubing, tagged cement top @ 4746' and POOH with tubing. RU CSI wireline truck and perforated well from 4674' to 4675' with 4 SPF. RU cementer and pumped 8.2 bbls fresh water to load hole followed by 3 bbls fresh water @ 2 bpm @ 60 psig. Shut down and closed well in for night.	CSI
12/28/2016		SICP: 0 psig. MU WAS cement retainer, RIH with 152 jts 2-3/8" tubing to 4665', set retainer and stung out. Pumped 5 bbls fresh water followed by 4 bbls Type 1 cement (15.6 ppg). Tubing pressured up, so reversed out and cleared tubing with two hole volumes. Pumped another 4 bbls cement followed by 14 bbls fresh water, stung into retainer and pumped 2 bbls of cement. Well pressured up to 500 psig, so stung out of retainer, pumped 10 bbls of Type 1 cement (15.6 ppg) and displaced with 14 bbls fresh water. Pulled 22 jts tubing to 4019', reverse-circulated 46 bbls fresh water and started out of hole with tubing.	CSI
12/29/2016		SITP: 0 psig, SICP: 0 psig. Finished pulling tubing. RU CSI wireline truck and perforated 4-1/2" casing 3990' to 3991' with 4 SPF. RD wireline truck, RU pump truck and filled casing with 7.2 bbls fresh water. Pumped 0.3 bbls fresh water before pressure climbed to 70 psig. Stopped pumping and watched pressure, but pressure did not fall off. Bled pressure off. RD pump truck and shut well in.	CSI
12/30/2016		SICP: 0 psig. RIH with 2-3/8" tubing and tagged cement top @ 3995'. RU cementers and pumped 10.3 bbls of Type 1 cement (15.6 ppg) and displaced with 11.3 bbls fresh water. Pulled 22 jts tubing up to 3314' and reverse circulated 25 bbls fresh water. Pulled 5 more jts tubing, applied 250 psig, and shut well in overnight.	CSI
1/3/2017		SITP: 0 psig, SICP: 0 psig. RIH with 2-3/8" tubing and tagged cement top @ 3314'. POOH with tubing, rigged up CSI wireline truck and perforated 3310' to 3311' (4 SPF). RU pump truck, loaded hole with 6 bbls of fresh water and established injection @ 0.5 BPM. Pumped 1.5 bbls fresh water, then shut down and locked well in for night.	CSI
1/4/2017		SICP: 0 psig. PU cement retainer, RIH on 2-3/8" tubing and set retainer @ 3290'. Pulled out of retainer, reverse-circulated with 26 bbls fresh water to clear tubing, then pumped 4 bbls Type 1 cement (15.6 ppg) followed by 2.2 bbls fresh water down tubing. Stung into retainer, pumped 0.5 bbl of cement through retainer and well pressured up to 500 psig. Pulled back out of retainer, pumped 16 bbls of Type 1 cement (15.6 ppg) and displaced with 6.2 bbls fresh water. Pulled 34 jts tubing to 2248', reverse-circulated 26 bbls fresh water and POOH with tubing. Shut well in for night.	CSI
1/5/2017		SICP: 0 psig. RU CSI wireline truck and perforated 2230' to 2231' (4 SPF). RU pump truck, loaded hole with 5 bbls fresh water, closed blind rams and tried to establish pump rate, but well pressured up. Monitored well for 15 mins and well pressure did not bleed off. RIH with 2-3/8" tubing to 2248', pumped 18.6 bbls Type 1 cement (15.6 ppg) and displaced with 1.1 bbls fresh water. Pulled 40 jts tubing, reverse circulated with 18 bbls fresh water and finished POOH with tubing.	CSI

Date	Hours	Gas Lost (mcf)	Rig Contractor
1/6/2017		SICP: 0 psig. RIH with rig cable tools and found top of cement @ 1035'. RD annular and double ram BOPs, MO pipe trailer and RD pump truck. Shut well in.	CSI
1/9/2017		SICP: 0 psig. Ellison MI excavator with hammer and removed cellar around well. Found 7" casing was welded to 4-1/2" casing. Hot-tapped 7" casing and found light blow with no reading on gas monitor. Cut 7" casing loose from 4-1/2" casing and pulled 35 Klbs on 4-1/2" casing (3) times with no movement. Cut out window to see down 7" casing and found cement right at ground level. Shut down for day.	CSI
1/10/2017		SICP: 0 psig. Installed 7" monument and pumped 15.4 bbls of Type 1 cement (15.6 ppg) down 3-1/2" casing to fill well to surface. Started rigging down all rig equipment, topped off monument with cement, welded API number on monument and capped top.	CSI
1/11/2017		RDMO CSI pole rig. Ellison MO fresh water and flowback tanks and rolloff. Stricklin MO rental equipment.	Ellison Dozer & Backhoe

RECEIVED
Office of Oil and Gas
FEB 09 2017
WV Department of
Environmental Protection