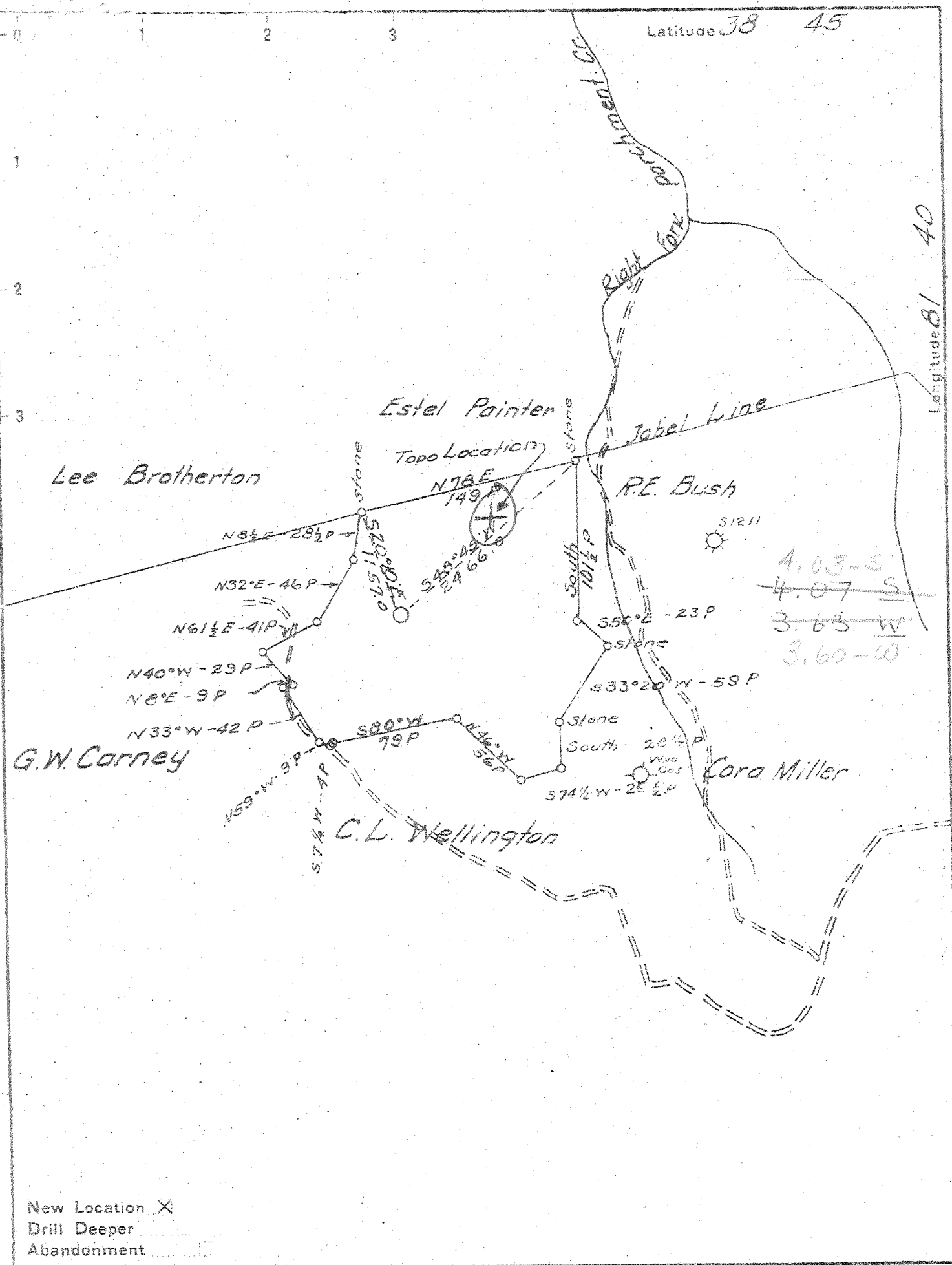


M

P



Company Godfrey L. Cabot Inc.
 Address 300 Union Bldg. Charleston Wva
 Farm J. L. McLean Hrs
 Tract _____ Acres 160 1/2 Lease No. 3-463
 Well (Farm) No. 32 Serial No. 1228
 Elevation (Spirit Level) 1070.97 "Ground"
 Quadrangle Kenna - N.W.
 County Jackson District Ripley
 Engineer Ray Boston
 Engineer's Registration No. _____
 File No. _____ Drawing No. _____
 Date 1-7-47 Scale 1" = 1320'

STATE OF WEST VIRGINIA
 DEPARTMENT OF MINES
 OIL AND GAS DIVISION
 CHARLESTON

WELL LOCATION MAP
 FILE NO. JAC-544

+ Denotes location of well on United States Topographic Maps, scale 1 to 62,500, latitude and longitude lines being represented by border lines as shown.

- Denotes one inch spaces on border line of original tracing.

DEEP WELL

WEST VIRGINIA DEPARTMENT OF MINES
OIL & GAS DIVISION
W E L L R E C O R D

Permit No. Jac 544
Kenna Quad.
Company
Address
Farm
Location
Well No.
District
Surface
Mineral
Commenced
Completed
Water
Date shot
Volume

Dry Hole
CASING & TUBING

Godfrey L. Gabot, Inc.
Charleston, W.Va. 13 3/8 43# 709 709 *
J.L. McLean Heirs Acres 10 3/4 32.75 1169 1169 **
32 serial 1228 Elev. 1071 8 5/8 24 2396 2396 ***
Ripley Jackson County 7 23 5174 5174 ****
16 62.57 20 20 Cond.

March 12, 1947 *One half coupling csg. shoe
Aug. 13, 1947 ** 10 1/2 x 12 Csg. shoe
1953 H.P.; 5301, 5 blrs. in 36 hrs. *** 8 5/8 " x 10" x 16" Rubber
Oct. 28, 1947 350# gel. #22356 Spang B.H. Packer
Depth 4445 to 4495 **** 7" x 8 5/8" x 15" Load
21 MCF B.S.; 24 hrs. A.S. Spang B.H. Packer # 20961
26 MCF

Yellow Sand	0	70	Shell - <i>Berea Horizon?</i>	2758	2785
Red Rock	70	137	Slate & Shell	2785	4000
Blue Slate	137	167	Brown Shale - 441	4000	4050
Red Rock	167	175	Lime Shell	4050	4080
Slate & Shell	175	198	Slate & Shell	4080	4200
Red Rock	198	218	Brown Shale	4200	4355
Slate & Shell	218	237	Black Lime	4355	4420
Sand	237	274	Brown Shale	4420	4480
Red Rock	274	309	Lime Shell	4480	4500
Blue Slate	309	317	White Slate	4500	4920
Red Rock	317	325	Brown Shale	4920	5130
Slate & Shell	325	400	Black Shale - <i>MARCELLUS</i>	5130	5164
Sand	400	425	Corniferous Lime - 463	5164	5254
Slate & Shell	425	530	Oriskany 1st Sand	5254	5286
Sand	530	556	Black Lime	5286	5297
Red Rock	556	575	Sand 2nd Sand Wh	5297	5313
Slate & Shell	575	655	Lime	5313	5332
Red Rock	655	710	Total Depth	5332	5332
Lime Shell	710	721	SLM 5256'		
Red Rock	721	728			
Shell & Slate	728	840	Sh. gas 4361-4369 No test		
Red Rock	840	845	Sh. gas 4455-4480 no test: Note: Total		
Lime	845	859	Shale gas 30 MCF when 7" casing was run.		
Slate & Shell	859	874	Sh. Gas 4920-5130		
Sand	874	901	Sh. Gas 5297-5298 would not gauge.		
Red Rock	901	928	Salt Water 5301; 5 blrs. in 36 hrs.		
Slate	928	935			
Sand	935	963			
Red Rock	963	974			
Lime	974	987			
Red Rock	987	1004			
Slate & Shell	1004	1035			
Red Rock	1035	1041			
Slate & Shell	1041	1084			
Sand	1084	1101			
Slate	1101	1141			
Sand	1141	1177			
Lime	1177	1187			
Red Rock	1187	1192			
Slate	1192	1315			
Sand	1315	1388			
Slate	1388	1415			
Sand & Shell	1415	1423			
Slate & Shell	1423	1470			
Sand	1470	1632			
Slate & Shell	1632	1899			
Sand - <i>Salt Sand?</i>	1899	2000			
Lime	2000	2030			
Slate & Shell	2030	2046			
Sand	2046	2115			
Slate	2115	2119			
Lime - <i>Big lime?</i>	2119	2294			
Sand - <i>Iron?</i>	2294	2399			
Slate & Shell	2399	2758			

5164 5254 5313
1071 1071 1071
4093 4183 4242

SLM 2416; 2784 SLM; show gas 2769-2775 No Test