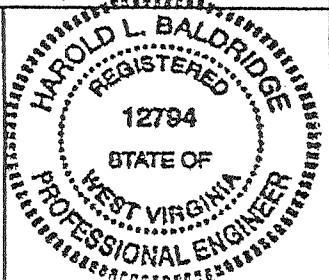


FILE NO. _____
 DRAWING NO. 7293
 SCALE 1" = 400
 MINIMUM DEGREE OF ACCURACY 1/200
 PROVEN SOURCE OF ELEVATION G.P.S.

I THE UNDERSIGNED, HEREBY CERTIFY THAT THIS PLAT IS CORRECT TO THE BEST OF MY KNOWLEDGE AND BELIEF AND SHOWS ALL THE INFORMATION REQUIRED BY LAW AND THE REGULATIONS ISSUED AND PRESCRIBED BY THE DEPARTMENT OF ENERGY.
 (SIGNED) [Signature]
 R.P.E. 12794 L.L.S. 1605



STATE OF WEST VIRGINIA
 DIVISION OF ENVIRONMENTAL PROTECTION
 SECTION OF OIL & GAS

DATE: APRIL 24, 2001
 OPERATOR'S WELL NO. 7293
 API WELL NO. 47 035 00559F

WELL TYPE: OIL GAS LIQUID INJECTION WASTE DISPOSAL
 (IF "GAS,") PRODUCTION STORAGE DEEP SHALLOW
 LOCATION: ELEVATION 636.71 WATER SHED TRIBUTARY OF LEFT FORK
 DISTRICT RIPLEY COUNTY JACKSON

QUADRANGLE RIPLEY W. VA. COORDINATES LAT: 38° 51' 03" LONG: 81° 42' 59.7"

SURFACE OWNER DAVID LEE BOURGEOIS ACREAGE 36.5
 ORIGINAL OIL & GAS ROYALTY OWNER LELIA E. WETZEL LEASE ACREAGE 36.5
 COAL OWNER W. H. BOURGEOIS, HEIRS LEASE NO. 45502

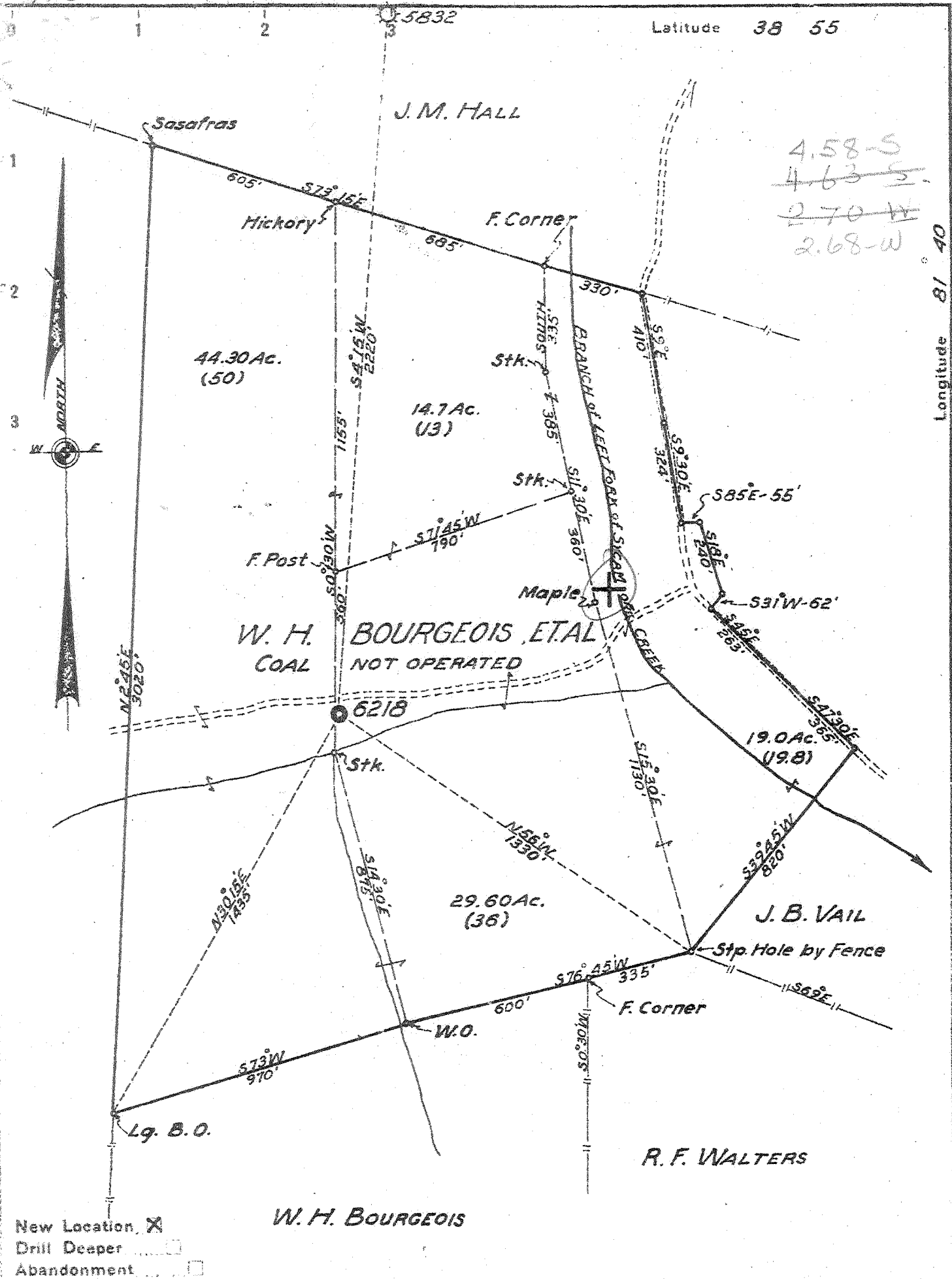
PROPOSED WORK: DRILL CONVERT DRILL DEEPER REDRILL FRACTURE OR STIMULATE PLUG OFF OLD FORMATION PERFORATE NEW FORMATION OTHER PHYSICAL CHANGE IN WELL (SPECIFY) STORAGE RECONDITION

PLUG AND ABANDON CLEAN OUT AND REPLUG
 TARGET FORMATION _____ ESTIMATED DEPTH _____
 WELL OPERATOR COLUMBIA GAS TRANSMISSION CORP DESIGNATED AGENT PAUL AMICK
 ADDRESS PO BOX 1273, CHARLESTON, WV 25325-1273 ADDRESS PO BOX 1273, CHARLESTON, WV 25325-1273

COUNTY NAME JACKSON PERMIT 00559F

DEEP WELL 9-0 (192)

JUN 07 2002



New Location X
 Drill Deeper
 Abandonment

W. H. BOURGEOIS

Company UNITED FUEL GAS CO.
 Address CHARLESTON, W. VA.
 Farm W. H. BOURGEOIS, ET AL.
 Tract _____ Acres 120 Lease No. 45502
 Well (Farm) No. 1 Serial No. 6218
 Elevation (Spirit Level) 636.13'
 Quadrangle RIPLEY - WC.
 County JACKSON District RIPLEY
 Engineer J. H. WOOD
 Engineer's Registration No. 662
 File No. 56-93 Drawing No. _____
 Date JUNE 20, 1947 Scale 1" = 400'

STATE OF WEST VIRGINIA
 DEPARTMENT OF MINES
 OIL AND GAS DIVISION
 CHARLESTON

WELL LOCATION MAP
 FILE NO. JAC-559

+ Denotes location of well on United States Topographic Maps, scale 1 to 62,500, latitude and longitude lines being represented by border lines as shown.

- Denotes one inch spaces on border line of original tracing.

Deep Well.

WEST VIRGINIA DEPARTMENT OF MINES
OIL & GAS DIVISION
W E L L R E C O R D

Permit No. Jac 559		Gas Well
Ripley Quad.		CASING & TUBING
Company	United Fuel Gas Co.	
Address	P.O. Box 1273, Charleston 25, W.Va.	13 3/8 543 Same
Farm	W.H. Bourgeois et al Acres 120	10 1/2 991 "
Location	Sycamore Creek	8 5/8 1968 "
Well No.	6218 Elev. 636.13	7 4653 "
District	Ripley Jackson County	
Surface		
Mineral	W.H. Bourgeois et al, Rt. #1, Ripley, W.Va.	
Commenced	7-2-47	
Completed	10-16-47	
Date shot	10-17-47 Depth 4743 to 4779 with 450# EL 400 and 37 1/2# Gel.	
Rock Pressure	775 lbs. 17 hrs.	

Soil	10	Brown Lime	3500	3710
Gravel	10	25	White Slate	3710 3750
Red Rock	25	145	Brown Shale	3750 4030
Sand	145	300	White Slate	4030 4400
Red Rock	300	330	Brown Shale	4400 4638
Slate	330	350	✓Corniferous Lime - 463	4638 4743
Red Rock	350	385	✓Oriskany Sand	4743 4775
Blue Slate	385	400	✓Black Lime - Held.	4775 4779
Red Rock	400	420	Total Depth	4779
Slate	420	430		
Pitts. Sand	430	465		
Slate	465	483		
Lime	483	500		
Red Rock	500	545		
White Slate	505	532		
Lime	532	542		
Slate	542	560		
Sand	560	595		
Slate	595	605		
Red Rock	605	625		
Slate	625	660		
Lime	660	675		
Sand	675	700		
Red Rock	700	715		
Lime	715	740		
Slate	740	790		
Red Rock	790	805		
Slate	805	810		
Lime	810	850		
Slate	850	855		
Lime	855	870		
Pink Rock	870	885		
Slate	885	984		
Lime	984	996		
Slate	996	1085		
Sand	1085	1105		
Slate	1105	1200		
Sand	1200	1315		
Slate	1315	1340		
Lime	1340	1370		
Slate	1370	1420		
Lime	1420	1460		
Slate	1460	1490		
Lime	1490	1550		
✓Salt Sand	1550	1675		
✓Big Lime	1675	1830		
✓Injun Sand	1830	1865		
Lime	1865	1950		
Slate	1950	1955		
Dark Lime	1955	2070		
Slate	2070	2275		
Lime	2275	2300		
Slate & Shells	2300	2500		

WR-35

DATE: 11-07-02
API #: 47-035-00559

MP

State of West Virginia
Division of Environmental Protection
Section of Oil and Gas

Well Operator's Report of Well Work

Farm name: D. Bourgeois Operator Well No.: Ripley # 7293

LOCATION: Elevation: 636.71' Quadrangle: Ripley, WV.

District: Ripley County: JACKSON

Latitude: Feet South of 38 Deg. 51 Min. 03 Sec.

Longitude: Feet West of 81 Deg. 42 Min. 59.7 Sec.

Company: Columbia Gas Transmission

	Casing & Tubing	Used in drilling	Left in well	Cement fill up Cu. Ft.
Address: <u>RR 2 BOX 138</u>				
<u>Sandeville, WV 25275</u>				
Agent: <u>Paul Amick</u>				
Inspector: <u>Larry Parrish</u>				
Date Permit Issued: <u>6-04-02</u>				
Date Well Work Commenced: <u>6-27-02</u>				
Date Well Work Completed: <u>8-02-02</u>				
Verbal Plugging:				
Date Permission granted on:				
Rotary Cable Rig				
Total Depth (feet):				
Fresh Water Depth (ft.):				
Salt Water Depth (ft.):				
Is coal being mined in area (N/Y)?				
Coal Depths (ft.):				

OPEN FLOW DATA

Producing formation Oriskany Sand Pay zone depth (ft) 4743' to 4775'

Gas: Initial open flow * MCF/d Oil: Initial open flow * Bbl/d

Final open flow * MCF/d Final open flow * Bbl/d

Time of open flow between initial and final tests * Hours

Static rock Pressure * psig (surface pressure) after * Hours

* Gas Storage - Does not apply

Second producing formation Pay zone depth (ft)

Gas: Initial open flow MCF/d Oil: Initial open flow Bbl/d

Final open flow MCF/d Final open flow Bbl/d

Time of open flow between initial and final tests Hours

Static rock Pressure psig (surface pressure) after Hours

NOTE: ON BACK OF THIS FORM PUT THE FOLLOWING: 1). DETAILS OF PERFORATED INTERVALS, FRACTURING OR STIMULATING, PHYSICAL CHANGE, ETC. 2). THE WELL LOG WHICH IS A SYSTEMATIC DETAILED GEOLOGICAL RECORD OF ALL FORMATIONS, INCLUDING COAL ENCOUNTERED BY THE WELLBORE.

Signed: *John McAlister*

By:

Date: 11-07-02

FEB 27 2003

JAC 0559

Installed new APZ 5M Wellhead

* Did not stimulate Oriskany Sand