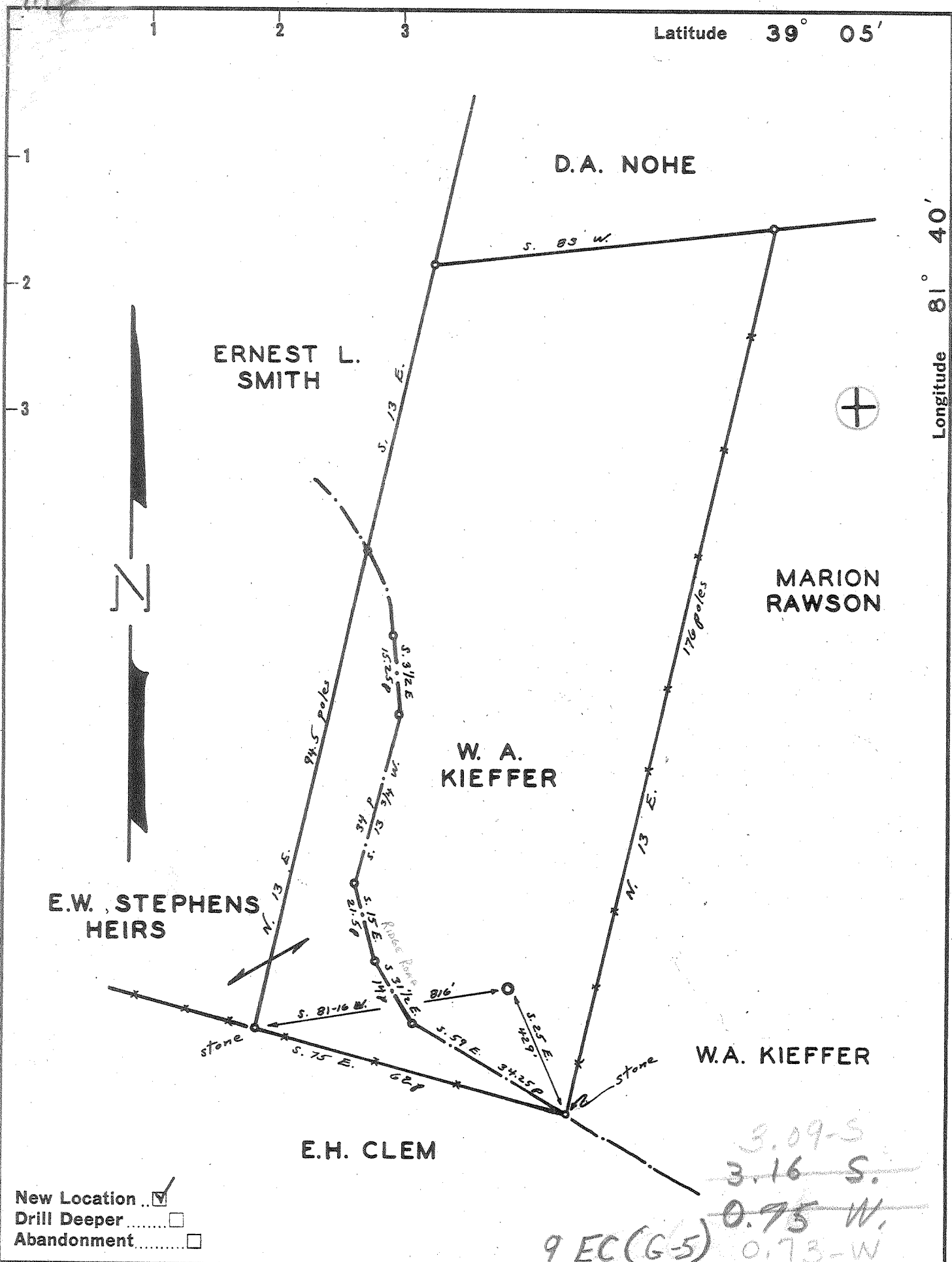


Latitude 39° 05'

Longitude 81° 40'



New Location    
 Drill Deeper    
 Abandonment

Company KEWANEE OIL CO.   
 Address P.O. BOX 5251 COLUMBUS, OHIO   
 Farm W.A. KIEFFER   
 Tract \_\_\_\_\_ Acres 55 3/4 Lease No. \_\_\_\_\_   
 Well (Farm) No. ONE Serial No. \_\_\_\_\_   
 Elevation (Spirit Level) 847 950 TOPO   
 Quadrangle BELLEVILLE, W.VA.-O.-Sta   
 County JACKSON District GRANT   
 Engineer M.B. GOAD   
 Engineer's Registration No. IND. 4040   
 File No. \_\_\_\_\_ Drawing No. \_\_\_\_\_   
 Date JULY 9, 1959 Scale 1" = 400'

STATE OF WEST VIRGINIA   
 DEPARTMENT OF MINES   
 OIL AND GAS DIVISION   
 CHARLESTON

WELL LOCATION MAP   
 FILE NO. JAC-998

+ Denotes location of well on United States Topographic Maps, scale 1 to 62,500, latitude and longitude lines being represented by border lines as shown.

- Denotes one inch spaces on border line of original tracing.

156 IMPERIAL 62590   
 Samples 196 (500-2400; 2400-4770) Deep Well 6-6-256



STATE OF WEST VIRGINIA  
DEPARTMENT OF MINES  
OIL AND GAS DIVISION

Quadrangle Belleville

WELL RECORD

Permit No. JAC-998

Oil or Gas Well Gas  
(KIND)

Company Kewanee Oil Company  
Address 1200 West Third Ave., Columbus 12, Ohio  
Farm W. A. Kieffer Acres 55-3/4

Location (waters) \_\_\_\_\_  
Well No. 1 Elev. 847' 950' TOPO  
District Grant County Jackson

The surface of tract is owned in fee by W. A. Kieffer Heirs  
Address Belleville

Mineral rights are owned by \_\_\_\_\_  
Address \_\_\_\_\_

Drilling commenced 7-20-59  
Drilling completed 8-21-59 well completed 11-12-59

Date Shot \_\_\_\_\_ From \_\_\_\_\_ To \_\_\_\_\_  
With \_\_\_\_\_

Open Flow \_\_\_\_\_ /10ths Water in \_\_\_\_\_ Inch  
\_\_\_\_\_ /10ths Merc. in \_\_\_\_\_ Inch

Volume 56 M Cu. Ft.

Rock Pressure \_\_\_\_\_ lbs. \_\_\_\_\_ hrs.

Oil None bbls., 1st 24 hrs.

WELL ACIDIZED \_\_\_\_\_

WELL FRACTURED 12000 gal. gelled water and 8400 # sand on 9-2-59

RESULT AFTER TREATMENT 545 MCF

ROCK PRESSURE AFTER TREATMENT \_\_\_\_\_

Fresh Water 710 Feet Salt Water \_\_\_\_\_ Feet

Casing and Tubing	Used in Drilling	Left in Well	Packers
Size			Kind of Packer
16			
13			
10			Size of
8 3/4	1895.73'	1895.73'	
6 3/4			Depth set
5 3/16	4606.70'	4606.70'	
3			Perf. top
2	4698.68'	4698.68'	Perf. bottom
Liners Used			Perf. top
			Perf. bottom

CASING CEMENTED 8-5/8" SIZE 1895.75' Ft. 7-26 Date  
5-1/2 4606.70 - 8-9-59

COAL WAS ENCOUNTERED AT \_\_\_\_\_ FEET \_\_\_\_\_ INCHES  
\_\_\_\_\_ FEET \_\_\_\_\_ INCHES \_\_\_\_\_ FEET \_\_\_\_\_ INCHES  
\_\_\_\_\_ FEET \_\_\_\_\_ INCHES \_\_\_\_\_ FEET \_\_\_\_\_ INCHES

Formation	Color	Hard or Soft	Top	Bottom	Oil, Gas or Water	Depth	Remarks
Pittsburgh Sd	White	H	557	580	water	710	
Shale	red-grn	S	580	690			
Sand	white	S	690	750			
Shale	red-grn	S	750	1270			
Salt Sand	white	S	1270	1300			
Shale	red-grn	S	1300	1745			
Maxton	tan	H	1745	1802			
Greenbrier	tan	H	1825	1860			
Injun	white	H	1860	1930			
Shale	grey	H	1930	4200			
Shale	brown	H	4200	4660			
Corniferous	gy-tan	H	4660	4773			
Oriskany	wh	H	4773	4786			

495

"Kewanee Oil Company unable to determine the rock pressure on the Kieffer No. 1. The well loaded up with fluid and the rock pressure has not been determined"



F 39