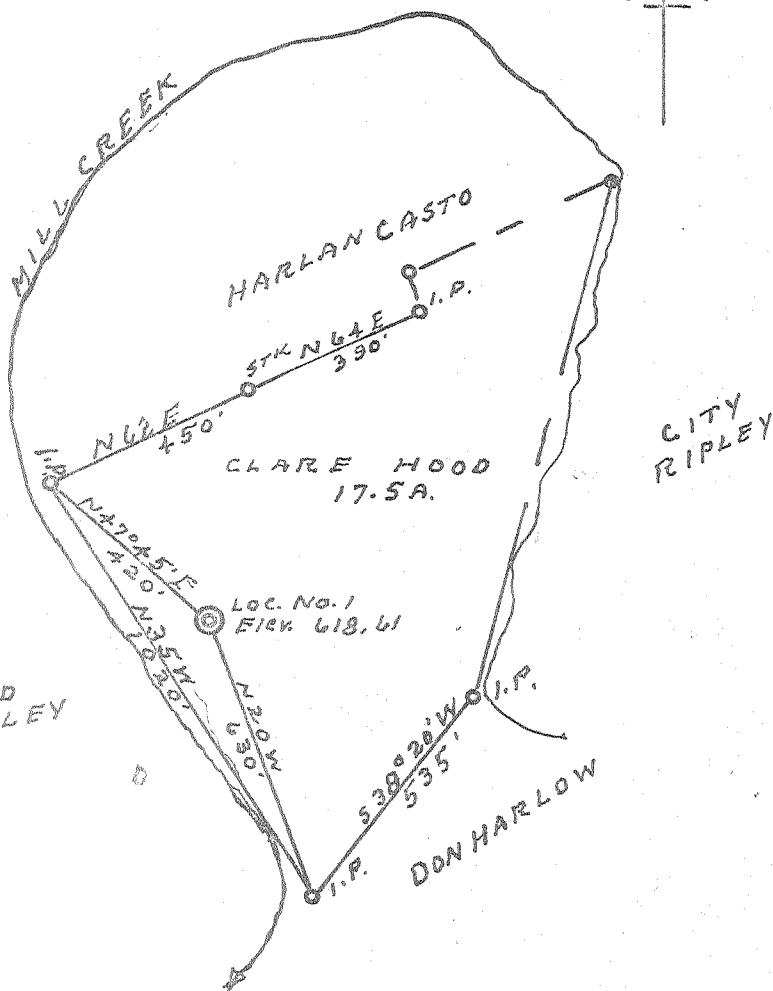


Latitude 38° 50'

Longitude 81° 40'

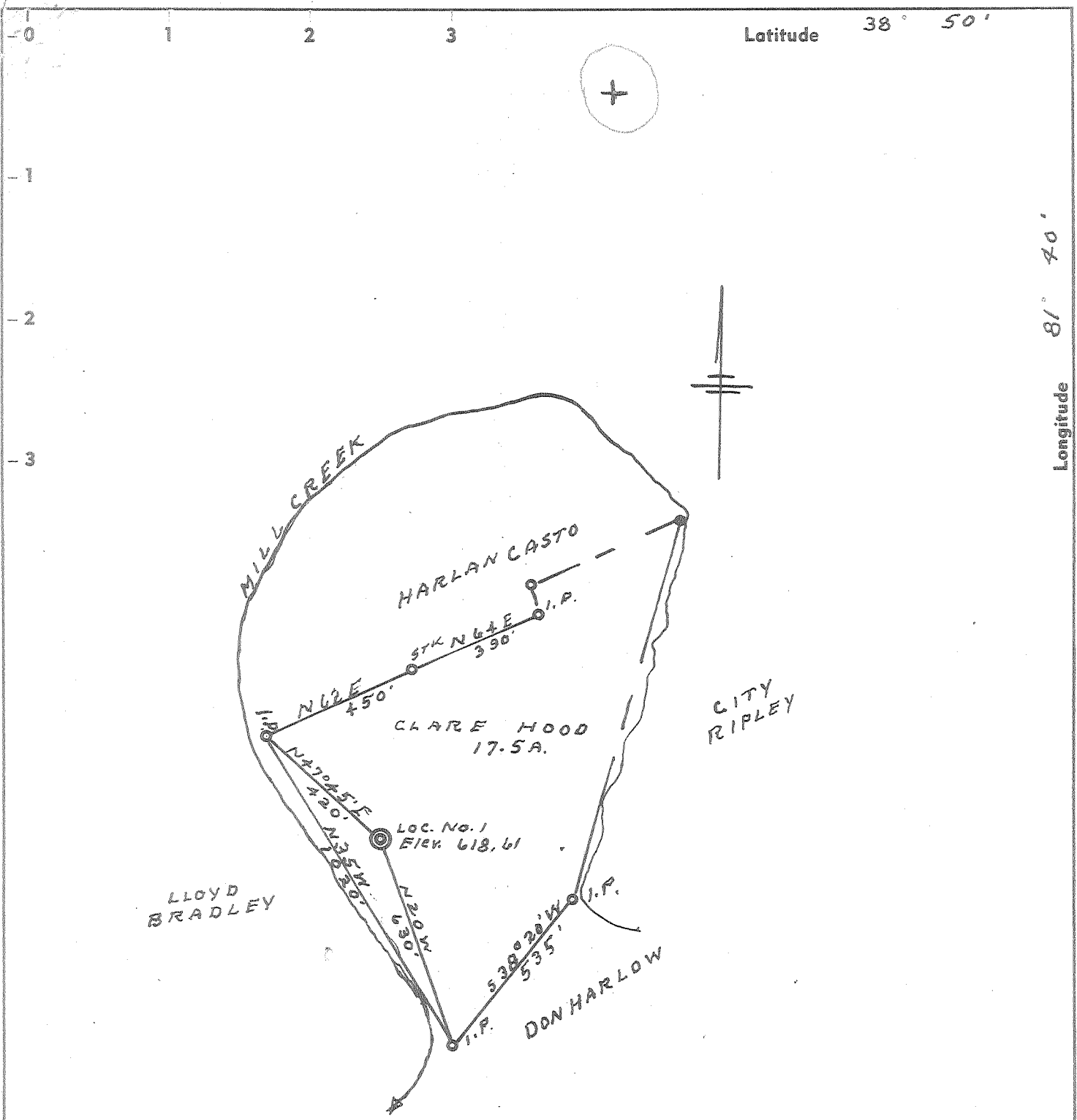


New location  SOURCE ELEV. FORKS ROAD WEST ACCURACY 1" IN 200' 593.00  
 Drill Deeper   
 Redrill   
 Abandonment  "I, the undersigned, hereby certify that this map is correct to the best of my knowledge and belief and shows all the information required by paragraph 6 of the rules and regulations of the oil and gas section of the mining laws of West Virginia."  
 LOURA 9-26-64

Company	ORISKINY GAS CO.
Address	RIPLEY, W. VA.
Farm	CLARE HOOD
Tract	Acres 17.5 Lease No.
Well (Farm) No.	1 Serial No.
Elevation (Spirit Level)	618.61
Quadrangle	RIPLEY JU
County	JACKSON District RIPLEY
Engineer	L. J. Byr
Engineer's Registration No.	804
File No.	Drawing No.
Date	5-19-65 Scale 1" = 400'

STATE OF WEST VIRGINIA  
 DEPARTMENT OF MINES  
 OIL AND GAS DIVISION  
 CHARLESTON  
**WELL LOCATION MAP**  
 FILE NO. JAC 1109-P

+ Denotes location of well on United States Topographic Maps, scale 1 to 62,500, latitude and longitude lines being represented by border lines as shown.  
 — Denotes one inch spaces on border line of original tracing.



~~0.58 S~~ 0.59 S  
~~3.26 W~~ 3.21 W  
 9-NW(H-5)

ACCURACY 1" IN 200' 593.00

New Location .  SOURCE ELEV. FORKS ROAD WEST  
 Drill Deeper . . . .   
 Redrill . . . . .   
 Abandonment . . . . .

"I, the undersigned, hereby certify that this map is correct to the best of my knowledge and belief and shows all the information required by paragraph 6 of the rules and regulations of the oil and gas section of the mining laws of West Virginia."

Company	ORISKANY GAS Co.
Address	RIPLEY, W.VA.
Farm	CLARE HOOD
Tract	Acres 17.5 Lease No.
Well (Farm) No.	① Serial No.
Elevation (Spirit Level)	618.61
Quadrangle	RIPLEY SW
County	JACKSON District RIPLEY
Engineer	L. F. Dye
Engineer's Registration No.	804
File No.	Drawing No.
Date	5-19-65 Scale 1" = 400'

STATE OF WEST VIRGINIA  
 DEPARTMENT OF MINES  
 OIL AND GAS DIVISION  
 CHARLESTON

**WELL LOCATION MAP**  
 FILE NO. JAC 1109

+ Denotes location of well on United States Topographic Maps, scale 1 to 62,500, latitude and longitude lines being represented by border lines as shown.  
 — Denotes one inch spaces on border line of original tracing.



STATE OF WEST VIRGINIA  
DEPARTMENT OF MINES  
OIL AND GAS DIVISION 7

- Rotary
- Spudder
- Cable Tools
- Storage

Quadrangle Ripley  
Permit No. Gas 1109

WELL RECORD

Oil or Gas Well  Gas   
(KIND)

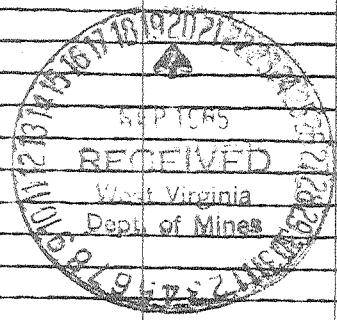
Company Oriskany Gas Co. Inc.,  
 Address Sycamore Rd. Ripley, W.VA.  
 Farm C.E. Hood #1 Acres \_\_\_\_\_  
 Location (waters) Mill Creek  
 Well No. I Elev. \_\_\_\_\_  
 District Ripley County Jackson  
 The surface of tract is owned in fee by C.E. Hood  
Ripley Address W.VA.  
 Mineral rights are owned by C.E. HOOD  
Ripley Address W.VA.  
 Drilling commenced July 28, 1965  
 Drilling completed August 12, 1965  
 Date Shot Fracked From 4705 To 4712  
 With \_\_\_\_\_  
 Open Flow 7 /10ths Water in 2" Inch  
 \_\_\_\_\_ /10ths Merc. in \_\_\_\_\_ Inch  
 Volume 89,000 Cu. Ft.  
 Rock Pressure 1700 lbs. 48 hrs.  
 Oil \_\_\_\_\_ bbls., 1st 24 hrs.  
 WELL ACIDIZED (DETAILS) \_\_\_\_\_  
 WELL FRACTURED (DETAILS) 750 BRL Water 3000# Sand

Casing and Tubing	Used in Drilling	Left in Well	Packers
Size			Kind of Packer
16			
13			
10	90	90	Size of
8 1/4	825	825	
6 3/4	2000	2000	Depth set
5 3/16			
4 1/2	4800	4800	
3			Perf. top <u>4705</u>
2	4700	4700	Perf. bottom <u>4726</u>
Liners Used			Perf. top _____
			Perf. bottom _____

Attach copy of cementing record.  
 CASING CEMENTED 4 1/2 SIZE No. Ft. 181 Date \_\_\_\_\_  
 Amount of cement used (bags) 100 bgs.  
 Name of Service Co. Dowell  
 COAL WAS ENCOUNTERED AT none FEET INCHES  
 \_\_\_\_\_ FEET INCHES FEET INCHES  
 \_\_\_\_\_ FEET INCHES FEET INCHES

RESULT AFTER TREATMENT (Initial open Flow or bbls.) 2,900,000 cu. ft. 70/10 Merc. 2900000  
 ROCK PRESSURE AFTER TREATMENT 1700 HOURS 48  
 Fresh Water 80 ft. Feet Salt Water 1560 Feet  
 Producing Sand Oriskany 4700 to 4740 Depth 4700 to 4740 Gas Pay

Formation	Color	Hard or Soft	Top	Bottom	Oil, Gas or Water	Depth	Remarks
Sand & Gravel			0	20			
Sand			20	60			
Slate			60	75			
Sand			75	160			Water 80ft.
Slate			160	200			
Sand			200	250			
Slate			250	300			
Sand			300	325			
Slate			325	400			
Red Rock			400	420			
Sand			420	480			
Slate			480	500			
Sand			500	555			
Red Rock			555	575			
Sand			575	600			
Red Rock			600	620			
Slate			620	635			
Red Rock			635	680			
Slate			680	700			
Sand			700	825			
Slate			825	850			
Sand			850	860			
Slate			860	920			
Sand			920	970			
							<u>925 ft.</u> <u>8-5/8 Casing</u>



Derpwell

Formation	Color	Hard or Soft	Top	Bottom	Oil, Gas or Water	Depth Found	Remarks
Slate			970	1000			
Sand			1000	1050			
Slate & Shells			1050	1460			
Sand			1460	1540			
Slate			1540	1560			
Salt Sand			1560	1770	Hole full water		
Slate			1770	1800			
Max Sand			1800	1840			
Line	Blue line		1840	1930			
Sand	Infus		1930	2000			2000 ft. 7 in casing
Slate			2000	2150			
Sand	Weak		2150	2200			
Slate & Shells			2200	3375			
Brown Shale	-441		3375	3450			
Slate & Shells			3450	4600			
Blue Lime	Common - Huntersville - 463		4600	4690			
Oriskany			4690	4740	Gas		
Slate	Hendersonburg		4740	4805	TR 485		

P.I. card Gas @ 4700 to 4740 total 70 Mcf  
 perf @ 4705 to 4726

Date September 20, 1962  
 APPROVED Oriskany Gas Co, Owner  
 By Oriskany Gas Co, President  
 (Title)