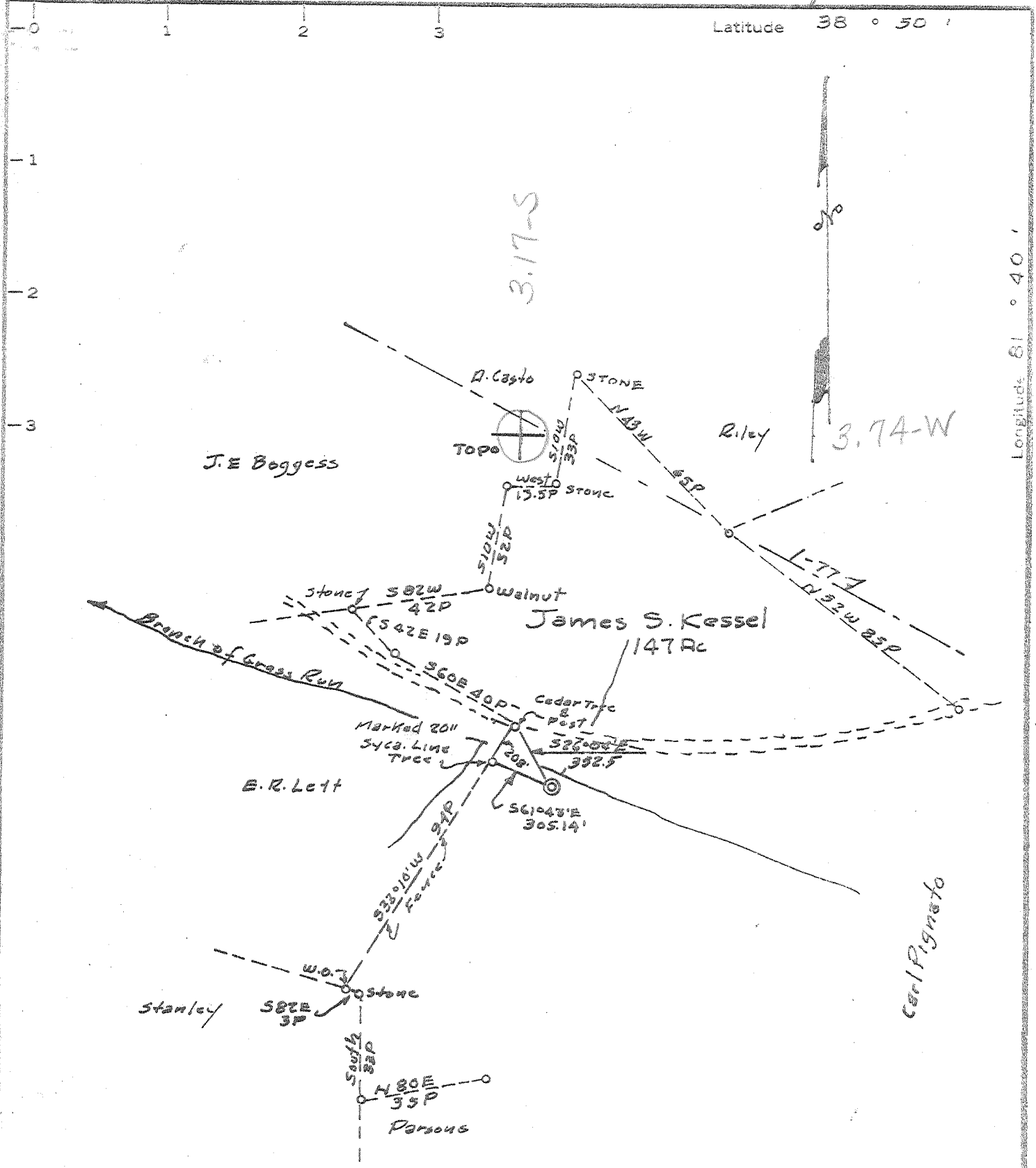


Latitude 38 ° 50 '

Longitude 81 ° 40 '



MINIMUM ERROR OF CLOSURE 1' IN 200

SOURCE OF ELEVATION USGS BM No Y106 on Bridge over Grass Run

567°30' W 4500' from Well Location Elev. 605.0

New Location
 Drill Deeper
 Abandonment
 7-25-68

"I, THE UNDERSIGNED, HEREBY CERTIFY THAT THIS MAP IS CORRECT TO THE BEST OF MY KNOWLEDGE AND BELIEF AND SHOWS ALL THE INFORMATION REQUIRED BY PARAGRAPH 6 OF THE RULES AND REGULATIONS OF THE OIL AND GAS SECTION OF THE MINING LAWS OF WEST VIRGINIA."

Company QUAKER STATE Oil Refg. Corp.
 Address P.O. Box 1327 Parkersburg, W. Va.
 Farm JAMES S. KESSEL
 Tract... Acres 147 Lease No. _____
 Well (Farm) No. 1 Serial No. _____
 Elevation (Spirit Level) 662.4
 Quadrangle Ripley SW
 County JACKSON District Ripley
 Engineer F. J. [Signature]
 Engineer's Registration No. 2492
 File No. _____ Drawing No. _____
 Date June 25, 1968 Scale 1" = 660'

STATE OF WEST VIRGINIA
 DEPARTMENT OF MINES
 OIL AND GAS DIVISION
 CHARLESTON
WELL LOCATION MAP
 FILE NO. JAC-1154-P

○ Denotes location of well on United States Topographic Maps, scale 1 to 62,500, latitude and longitude lines being represented by border lines as shown.

- - - Denotes one inch spaces on border line of original tracing.



STATE OF WEST VIRGINIA
DEPARTMENT OF MINES
OIL AND GAS DIVISION

Rotary
Spudder
Cable Tools
Storage

Quadrangle RIPLEY
Permit No. JAC-1154

WELL RECORD

Oil or Gas Well DRY
(KIND)

Company QUAKER STATE OIL REFINING CORPORATION
Address P. O. Box 1327, Parkersburg, W. Va.
Farm James Kessel Acres 147
Location (waters) Branch of Grass Run KB 675
Well No. ONE Elev. 662
District Ripley County Jackson
The surface of tract is owned in fee by _____
Address _____
Mineral rights are owned by James Kessel
Address Ripley, W. Va.
Drilling commenced 7-12-68
Drilling completed 7-24-68
Date Shot -- From -- To --
With _____

Casing and Tubing	Used in Drilling	Left in Well	Packers
Size			Kind of Packer
16			
13			
11-3/4	49*	Contd. to surface	Size of
8-5/8	2378*	" " "	Depth set
5-1/2	5532*		
5 3/16			
4 1/2			
3	*from top of KB - 13'		Perf. top
2	to ground level		Perf. bottom
Liners Used			Perf. top
			Perf. bottom

Open Flow /10ths Water in _____ Inch
/10ths Merc. in _____ Inch
Volume _____ Cu. Ft.
Rock Pressure -- lbs. -- hrs.
Oil _____ bbls., 1st 24 hrs.
WELL ACIDIZED (DETAILS) No
WELL FRACTURED (DETAILS) No

Attach copy of cementing record.
CASING CEMENTED 51 SIZE 5500 No. Ft. 7-21-68 Date
Amount of cement used (bags) 100 of pozmix
Name of Service Co. Howell
COAL WAS ENCOUNTERED AT none FEET INCHES
FEET INCHES FEET INCHES
FEET INCHES FEET INCHES

RESULT AFTER TREATMENT (Initial open Flow or bbls.) Not treated
ROCK PRESSURE AFTER TREATMENT -- HOURS --
Fresh Water 170 ✓ Feet 1600 ✓ Salt Water 1600 ✓ Feet
Producing Sand -- Depth _____

Formation	Color	Hard or Soft	Top	Bottom	Oil, Gas or Water	Depth	Remarks
(ALL DEPTHS TAKEN FROM KB - 13' ABOVE GROUND LEVEL)							
Surface			0	240	Water at 170'	5558	5558
Sandy shale			240	632		675	4782
Sand & shale			632	1450		4883	776
Sand			1450	1740	Water at 1600'		
Shale			1740	1800			
Big Lime			1800	1870			(3)
Injun			1870	1930			
Shale			1930	2341			
Perea			2341	2352			
Shale			2350	4710	Show gas in shale Dev. sh		
Corniferous Lime			4710	4782			
Oriskany			4782	4842			
Lime			4842	5558	Show sulfur gas at 5402 - 52		
Newburg			5558	5561	Dry		
Lime			5561	5607			
TOTAL DEPTH				5607			

T.D. 545

Log tops:
Nonodaga 4708-4810
Oriskany 4810-54
Newburg 5558-72
Mc Kenzie

Elec. Logs: Birdwell - 7-24-68
Gamma Ray
Density
Induction

