

CERTIFICATE

"I, the undersigned, hereby certify that this map is correct to the best of my knowledge and belief and shows all the information required by paragraph 6 of the rules and regulations of the oil and gas section of the mining laws of West Virginia."

Minimum degree of accuracy is one part in 200

Signed William D. Smushy L.L.S. # 116

- NEW LOCATION
- RECONDITION
- DRILL DEEPER
- ABANDONMENT

ISSUED 4-4-75 N.B. 110 P. 26

COMPANY CARL E. SMITH, INC.

ADDRESS SANDYVILLE, W.VA.

FARM JOHN W. MSCOY ET AL.

MAP OV-26 ACRES 281 A± Unit LEASE NO. 2567

WELL (FARM) NO. 1 SERIAL NO. _____

ELEVATION (SPIRIT LEVEL) 806

QUADRANGLE RAVENSWOOD SE. EC

COUNTY JACKSON DISTRICT UNION

POINT OF PROVEN ELEVATION Elev. 914
U.S.G.S. Data Forks Road Shown Above

FILE NO. _____ DRAWING NO. _____

DATE APRIL 12 1971 SCALE 1"=660'

STATE OF WEST VIRGINIA
DEPARTMENT OF MINES
OIL AND GAS DIVISION
CHARLESTON

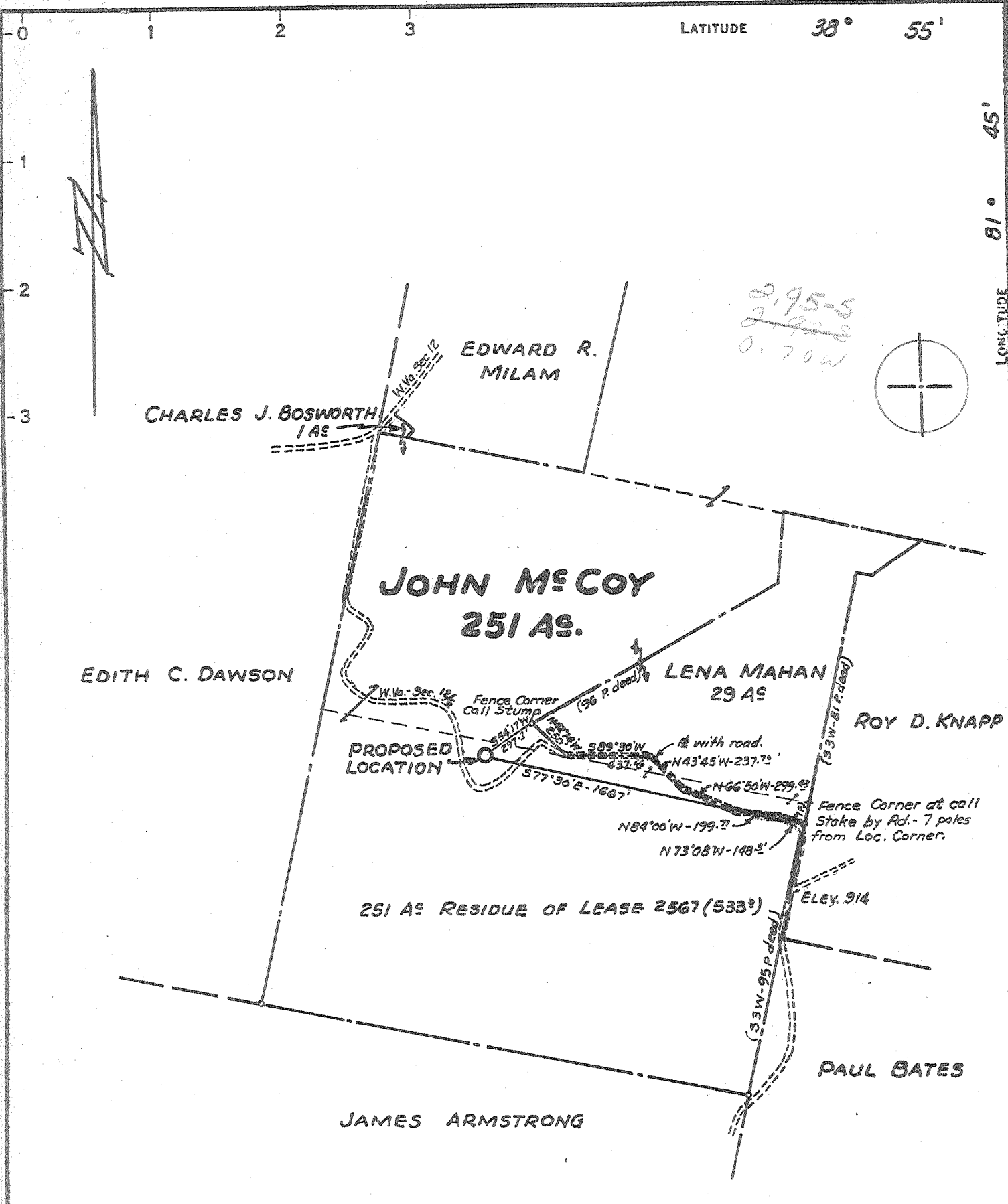
WELL LOCATION MAP

FILE NO. JAC-1273-P

47-035

+ DENOTES LOCATION OF WELL ON UNITED STATES TOPOGRAPHIC MAPS. SCALE 1 TO 62 500. LATITUDE AND LONGITUDE LINES BEING REPRESENTED BY BORDER LINES AS SHOWN.

- DENOTES ONE INCH SPACES ON BORDER LINE OF ORIGINAL TRACING.



2,955
2,920
0.70W

CERTIFICATE

- NEW LOCATION
- RECONDITION
- DRILL DEEPER
- ABANDONMENT

"I, the undersigned, hereby certify that this map is correct to the best of my knowledge and belief and shows all the information required by paragraph 6 of the rules and regulations of the oil and gas section of the mining laws of West Virginia."
Minimum degree of accuracy is one part in 200

Signed William J. Grady L.L.S. # 116

N.B. 110 p. 26

COMPANY	CARL E. SMITH, INC.
ADDRESS	SANDYVILLE, W.VA.
FARM	JOHN W. MCGOY ET AL.
MAP	OV-26 ACRES 281 AS Unit LEASE NO. 2567
WELL (FARM) NO.	/ SERIAL NO.
ELEVATION (SPIRIT LEVEL)	806
QUADRANGLE	RAVENSWOOD S.E. EC
COUNTY	JACKSON DISTRICT UNION
POINT OF PROVEN ELEVATION	Elev. 914
U.S.G.S. Data Forks Road Shown Above	
FILE NO.	DRAWING NO.
DATE	APRIL 12 1971 SCALE 1" = 660'

STATE OF WEST VIRGINIA
DEPARTMENT OF MINES
OIL AND GAS DIVISION
CHARLESTON
WELL LOCATION MAP
FILE NO. JAC-1273

+ DENOTES LOCATION OF WELL ON UNITED STATES TOPOGRAPHIC MAPS SCALE 1 TO 62 500. LATITUDE AND LONGITUDE LINES BEING REPRESENTED BY BORDER LINES AS SHOWN.
-- DENOTES ONE INCH SPACES ON BORDER LINE OF ORIGINAL TRACING

6-6 D Ripley N. (311) Deep Well (Newburg) APR 26 1971

39-00
6-33



STATE OF WEST VIRGINIA
DEPARTMENT OF MINES
OIL AND GAS DIVISION

Rotary
Spudder
Cable Tools
Storage E: HOLL
Oil or Gas Well Gas
(KIND)

Quadrangle Ravenswood

Permit No. JAC 1273

WELL RECORD

Company Carl E. Smith, Inc.
Address Sandyville, W. Va.
Farm John W. McCoy Acres 281
Location (waters) Crooked Fork
Well No. 1 Elev. 806.04
District Union County Jackson
The surface of tract is owned in fee by John and Ursie McCoy
Address Rt 1, Ripley WVa
Mineral rights are owned by John and Ursie McCoy
Address Rt 1, Ripley WVa

Drilling commenced 4-14-71
Drilling completed 5-14-71
Date Shot From To
With

Open Flow /10ths Water in Inch
/10ths Merc. in Inch
Volume 2,000 MCF Cu. Ft.
Rock Pressure 1425 lbs. 24 hrs.

Oil bbls., 1st 24 hrs.
WELL ACIDIZED (DETAILS)
WELL FRACTURED (DETAILS)

Casing and Tubing	Used in Drilling	Left in Well	Packers
Size			Kind of Packer
16			
13 3/8	122	122	Size of
10			Depth set
8 1/4	2450	2450	
6 3/4			
5 3/16	5398	5398	Perf. top
4 1/2			Perf. bottom
3			Perf. top
2			Perf. bottom
Liners Used			

Attach copy of cementing record. 13 3/8 122' 4-15-71 100b
CASING CEMENTED 5-2-71 450 Bg No. Ft. Date
Amount of cement used (bags) 5398 5-7-71 135bg
Name of Service Co. Well Service Halliburton
COAL WAS ENCOUNTERED AT FEET INCHES
FEET INCHES FEET INCHES
FEET INCHES FEET INCHES

RESULT AFTER TREATMENT (Initial open Flow or bbls.) 6,000 MCF 6,000,000
ROCK PRESSURE AFTER TREATMENT 1425 HOURS 24
Fresh Water 110 Feet Salt Water 1520 Feet
Producing Sand Newberg Depth 5411

Formation	Color	Hard or Soft	Top	Bottom	Oil, Gas or Water	Depth	Remarks
Surface			0	130	Water	110	
Sand-Shale			330	880			
Lime-Shale/Sand			880	940			
Sand-Shale			940	1500			
Salt Sand			1500	1520	Water	1520	
Sand-Shale			1520	1950			
Lime - Big lime?			1950	1980			
Sand-Shale			1980	2340			
Lime - Coffee Sh. } Pocahontas			2340	2385			
Sesfa			2385	2388			
Sand-Lime			2388	2780			
Shale			2780	4690			
Oriskany			4690	4705			
Lime - HELDERBERG & SALINA			4705	5411			
Newberg			5411	5423	Gas		
Shale			5423	5440			

WHERE'S THE ONONDAGA???
@ 4625 to 4718 per P.I. card

T.D. 545

RECEIVED

JUL 27 1971

OIL & GAS DIVISION