

Minimum Error of Closure 1 IN 200  
 Source of Elevation U.S.G.S. Elev. 646' Road Intersection Falls Run

"I, the undersigned, hereby certify that this map is correct to the best of my knowledge and belief and shows all the information required by paragraph 6 of the rules and regulations of the oil and gas section of the mining laws of West Virginia."

- New Location
- Drill Deeper
- Abandonment

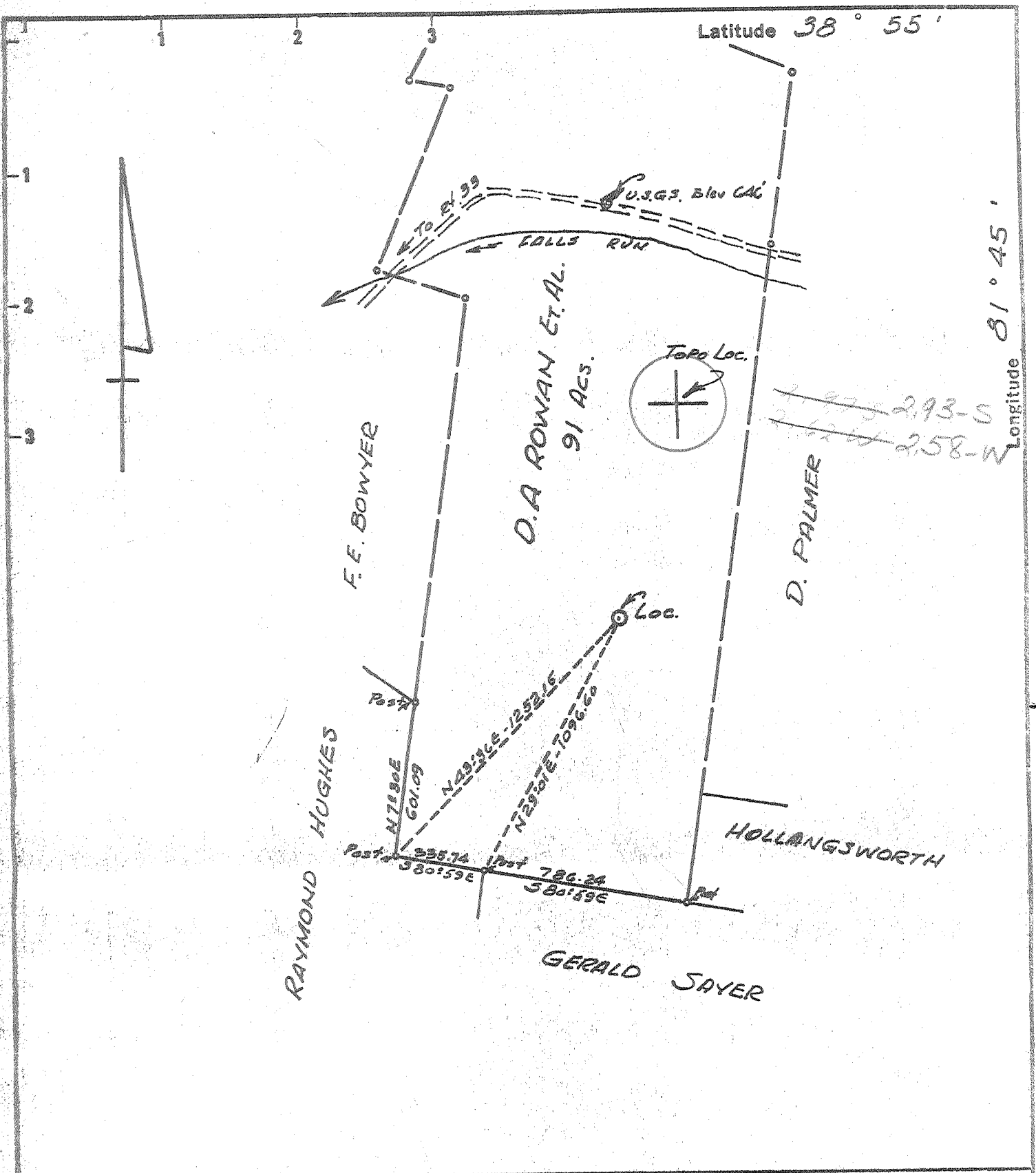
Company R. & S. Gas & Oil, Inc.  
 Address 246 So. Church St., Ripley, West Va.  
 Farm D.A. ROWAN ET AL.  
 Tract \_\_\_\_\_ Acres 91 Lease No. \_\_\_\_\_  
 Well (Farm) No. 1 Serial No. \_\_\_\_\_  
 Elevation (Spirit Level) 829.0  
 Quadrangle ROVENSWOOD EC  
 County JACKSON District UNION  
 Engineer N.L. Defton  
 Engineer's Registration No. 1832  
 File No. \_\_\_\_\_ Drawing No. \_\_\_\_\_  
 Date 9-14-71 Scale 1" = 500'

STATE OF WEST VIRGINIA  
 DEPARTMENT OF MINES  
 OIL AND GAS DIVISION  
 CHARLESTON

**WELL LOCATION MAP**  
 FILE NO. JAC-1314-P

+ Denotes location of well on United States Topographic Maps, scale 1 to 62,500 latitude and longitude lines being represented by border lines as shown.

- Denotes one inch spaces on border line of original tracing.



New Location   
 Drill Deeper   
 Abandonment

Minimum Error of Closure 1 in 200  
 Source of Elevation U.S.G.S. Elev. 646' Road Intersection Falls Run

"I, the undersigned, hereby certify that this map is correct to the best of my knowledge and belief and shows all the information required by paragraph 6 of the rules and regulations of the oil and gas section of the mining laws of West Virginia."

Company COLONIAL GAS COMPANY  
 Address CHAS. NATL. PLAZA, CHARLESTON, W.VA.  
 Farm D.A. ROWAN ET. AL.  
 Tract \_\_\_\_\_ Acres 91 Lease No. \_\_\_\_\_  
 Well (Farm) No. 1 Serial No. \_\_\_\_\_  
 Elevation (Spirit Level) 829.0  
 Quadrangle ROVENSWOOD EC  
 County JACKSON District UNION  
 Engineer N.L. Defton  
 Engineer's Registration No. 1832  
 File No. \_\_\_\_\_ Drawing No. \_\_\_\_\_  
 Date 9-14-71 Scale 1" = 500'

STATE OF WEST VIRGINIA  
 DEPARTMENT OF MINES  
 OIL AND GAS DIVISION  
 CHARLESTON

**WELL LOCATION MAP**  
 FILE NO. JAC-1314

+ Denotes location of well on United States Topographic Maps, scale 1 to 62,500 latitude and longitude lines being represented by border lines as shown.

- Denotes one inch spaces on border line of original tracing.



RECEIVED

DEC 21 1971

STATE OF WEST VIRGINIA OIL & GAS DIVISION  
 DEPARTMENT OF MINES  
 OIL AND GAS WELLS DIVISION 3

- Rotary
- Sudder
- Cable Tools
- Storage

WELL RECORD

Oil or Gas Well Gas  
 (KIND)

Quadrangle Ravenswood  
 Permit No. Jac-1314

Company Colonial Gas Company  
 Address Charleston, West Virginia  
 Farm D. A. Rowan Acres 91  
 Location (waters) Falls Run  
 Well No. One (1) Elev. 841 KB  
 District Union County Jackson  
 The surface of tract is owned in fee by \_\_\_\_\_  
 Address \_\_\_\_\_  
 Mineral rights are owned by \_\_\_\_\_  
 Address \_\_\_\_\_  
 Drilling commenced 10/4/71  
 Drilling completed 10/27/71  
 Date Shot \_\_\_\_\_ From \_\_\_\_\_ To \_\_\_\_\_  
 With \_\_\_\_\_  
 Open Flow /10ths Water in \_\_\_\_\_ Inch  
/10ths Merc. in \_\_\_\_\_ Inch  
 Volume 6 @ 9,000, 9,000 Cu. Ft.  
 Rock Pressure 4675 lbs. \_\_\_\_\_ hrs.  
 Oil \_\_\_\_\_ bbls., 1st 24 hrs.  
 WELL ACIDIZED (DETAILS) \_\_\_\_\_  
 WELL FRACTURED (DETAILS) 1000 gal acid  
800 gal. Halliburton  
 RESULT AFTER TREATMENT (Initial open flow or bbls.) 19,000,000 CF of production  
4675 HOURS 19,000 Mcf  
 ROCK PRESSURE AFTER TREATMENT \_\_\_\_\_ HOURS \_\_\_\_\_  
 Fresh Water \_\_\_\_\_ Feet \_\_\_\_\_ Salt Water \_\_\_\_\_ Feet \_\_\_\_\_  
 Producing Sand Newburg Depth 5227-31

Casing and Tubing	Used in Drilling	Left in Well	Packers
Size			Kind of Packer
16			
13			Size of
<del>11-3/4</del>	247	247	
<del>8-5/8</del>	2100		Depth set
6 1/2			
<del>5-1/2</del>	5205	5205	
4 1/2			Perf. top
3			Perf. bottom
2			Perf. top
Liners Used			Perf. bottom

Attach copy of cementing record. See other side  
 CASING CEMENTED \_\_\_\_\_ SIZE \_\_\_\_\_ No. Ft. \_\_\_\_\_ Date \_\_\_\_\_  
 Amount of cement used (bags) \_\_\_\_\_  
 Name of Service Co. Jones Cementing Halliburton  
 COAL WAS ENCOUNTERED AT None FEET \_\_\_\_\_ INCHES \_\_\_\_\_  
 FEET \_\_\_\_\_ INCHES FEET \_\_\_\_\_ INCHES  
 FEET \_\_\_\_\_ INCHES FEET \_\_\_\_\_ INCHES  
20,000 lb. Sand 20' - 40'  
treated water 23.99 SCF /

Formation	Color	Hard or Soft	Top	Bottom	Oil, Gas or Water	Depth	Remarks
Red Rock			0	40			
Sand			40	75			
Red Rock			75	120			
Sand			120	150			
Red Rock			150	200			
Sand			200	350			
Red Rock			350	360			
Sand			360	370			
Red Rock			370	385			
Sand			385	395			
Red Rock			395	405			
Sand			405	425			
Red Rock			425	435			
Sand			435	460			
Red Rock			460	470			
Shale			470	530			
Red Rock			530	540			
Sand - 1st A.H.S.?			540	640			
Shale			640	730			
Red Rock			730	750			
Shale			750	775			
Sand			775	810			
Shale			810	860			
Sand			860	870			
Shale			870	950			
Sand			950	1010			
Shale			1010	1045			
Sand			1045	1060			

(over)

JAN 4 1972

Formation	Color	Hard or Soft	Top $\beta$	Bottom	Oil, Gas or Water	Depth Found	Remarks
Shale			1060	1105			
Sand			1105	1115			
Shale			1115	1130			
Sand			1130	1200			
Shale			1200	1215			
Sand			1215	1255			
Shale			1255	1270			
Sand			1270	1295			
Shale			1295	1360			
Sand			1360	1390			
Shale			1390	1430			
Sand			1430	1460			
Shale			1460	1590			
Sand			1590	1620			
Shale			1620	1650			
Sand			1650	1660			
Lime - Biglime			1660	1840			
Sand - Injun			1840	1940			
Sandy Shale			1940	2050			
Shale			2050	4472			
✓ Corniferous Lm. - 46 <sup>3</sup>			4472	4556			
✓ Oriskany Sd.			4556	4564			
✓ Limestone & Dolomite - HELDERBERG & SALINA			4564	5226			
✓ Newburg Sand			5226	5232			
✓ Dolomite - MCKENZIE			5232	5250			
				5250 TOTAL DEPTH			
				545			
CASING RECORD:							
11-3/4" csg. @ 247' cemented w/120 sx., 10/7/71							
8-5/8" csg. @ 2100' cemented w/160 sx., 10/15/71							
5-1/2" csg. @ 5205' cemented w/160 sx., 10/24/71							

Date 11/13/71 1971

APPROVED \_\_\_\_\_, Owner

By [Signature] (Title)