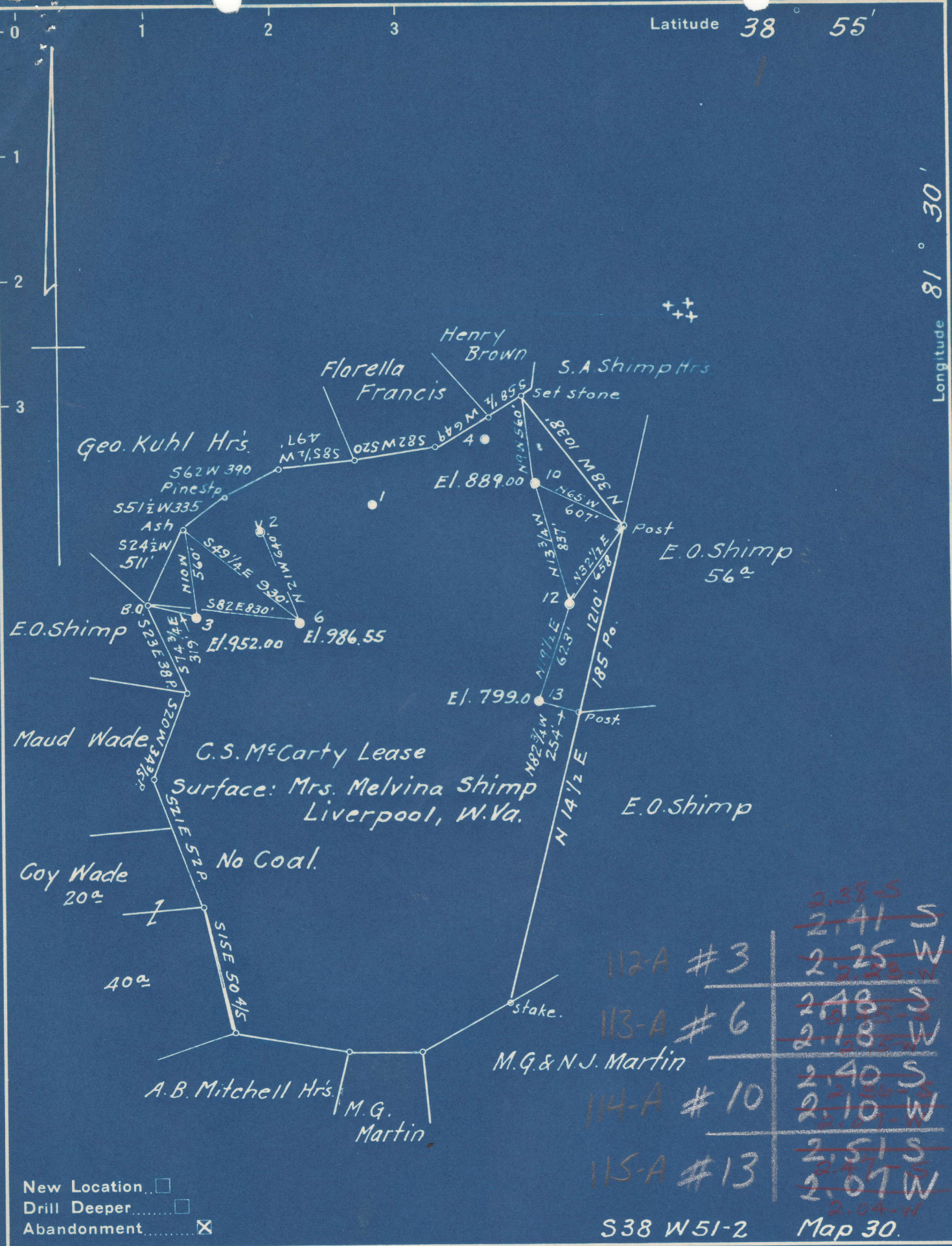


Latitude 38° 55'

Longitude 81° 30'



New Location
 Drill Deeper
 Abandonment

| | |
|-----------|--|
| 112-A #3 | 2.38-S 2.41-S 2.25-W |
| 113-A #6 | 2.18-S 2.18-W |
| 114-A #10 | 2.40-S 2.10-W |
| 115-A #13 | 2.51-S 2.07-W 2.04-W |

S38 W51-2 Map 30.

Company A.R. Kelly
 Address Parkersburg, W. Va.
 Farm C.S. McCarty
 Tract _____ Acres 235 Lease No. _____
 Well (Farm) No. 3-6-10-13 Serial No. _____
 Elevation (Spirit Level) see Above.
 Quadrangle Ripley
 County Jackson District Ravenswood
 Engineer Wm S. Hayes
 Engineer's Registration No. 1429
 File No. _____ Drawing No. _____
 Date 9-23-48 Scale 1"=800'

STATE OF WEST VIRGINIA
 DEPARTMENT OF MINES
 OIL AND GAS DIVISION
 CHARLESTON

JAC-114-A #10
 JAC-115-A #13
 JAC-112-A-#3
 JAC-113-A-#6

WELL LOCATION MAP

+ Denotes location of well on United States Topographic Maps, scale 1 to 62,500, latitude and longitude lines being represented by border lines as shown.

- Denotes one inch spaces on border line of original tracing.

"IMPERIAL" TRACING CLOTH
 K & E CO., N. Y.

66 Liverpool (161)

C. S. McCARTY NO. 3 WELL.

Ravenswood District, Jackson County, W. Va.
By South Penn Oil Co.
On 235 acres.
Elevation.....
Completed April 19, 1929.
Oil well. Filled 700' in $3\frac{1}{2}$ hrs.
From Heck's notes.

112A

| | Top. | Bottom. |
|------------------------------|------|---------|
| Big Lime | 2106 | - 2150 |
| Big Injun Sand | 2150 | - 2216 |
| Berea Sand (oil, 2603-2614') | 2601 | - 2614 |