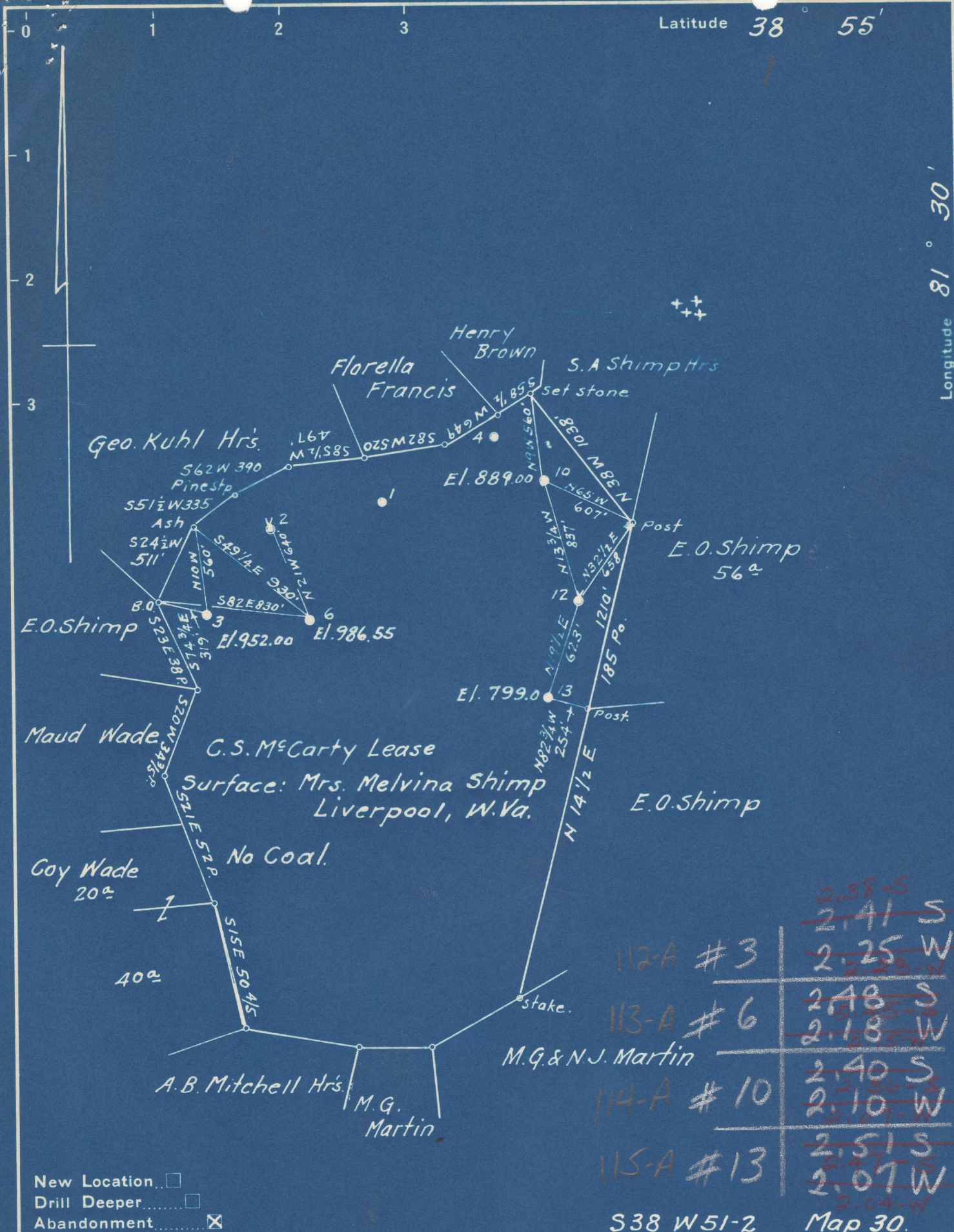


Latitude 38° 55'

Longitude 81° 30'



New Location
 Drill Deeper
 Abandonment

Company A.R. Kelly
 Address Parkersburg, W. Va.
 Farm C.S. McCarty
 Tract _____ Acres 235 Lease No. _____
 Well (Farm) No. 3-6-10-13 Serial No. _____
 Elevation (Spirit Level) see Above.
 Quadrangle Ripley
 County Jackson District Ravenswood
 Engineer Wm. S. Hayes
 Engineer's Registration No. 1429
 File No. _____ Drawing No. _____
 Date 9-23-48 Scale 1" = 800'

STATE OF WEST VIRGINIA
 DEPARTMENT OF MINES
 OIL AND GAS DIVISION
 JAC-114-A CHARLESTON
 # 10
WELL LOCATION MAP
 FILE NO. JAC-112-A-#3
 JAC-115-A JAC-113-A-#6
 # 13
 + Denotes location of well on United States Topographic Maps, scale 1 to 62,500, latitude and longitude lines being represented by border lines as shown.
 - Denotes one inch spaces on border line of original tracing.

66 Liverpool (161)

C. S. McCARTY NO. 6 WELL.

Ravenswood District, Jackson County, W. Va.
By South Penn Oil Co.,
On 235 acres.
Elevation.....
Completed July 16, 1929.
Oil well. 30 bbls. 24 hrs. after shot.
From Heck's notes.

113A

| | Top. | Bottom. |
|------------------------------|------|---------|
| Big Lime | 2129 | - 2177 |
| Big Injun Sand | 2177 | - 2238 |
| Berea Sand (oil, 2631-2639') | 2629 | - 2639 |