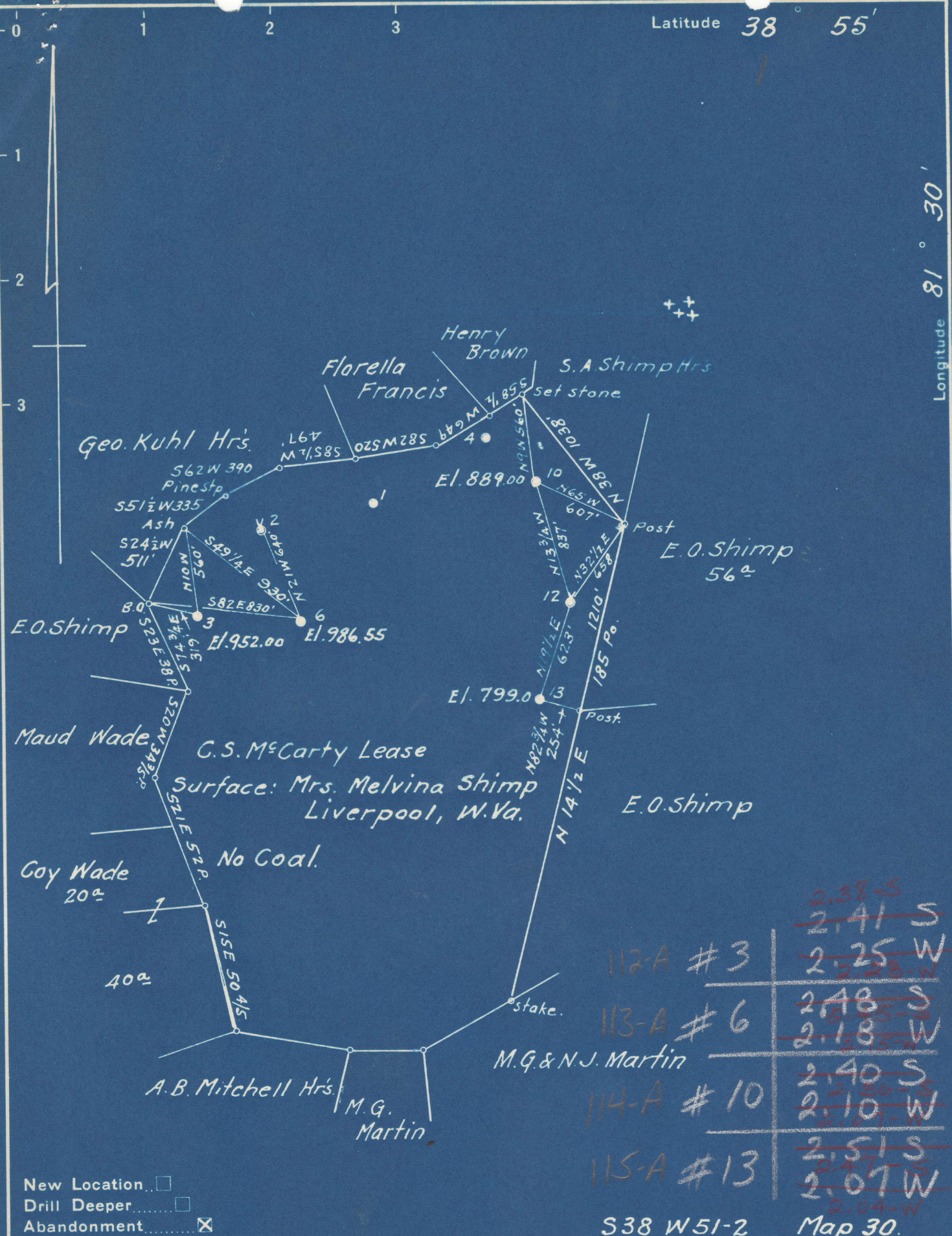


Latitude 38 55'

Longitude 81 30'



New Location   
 Drill Deeper   
 Abandonment

Company A.R. Kelly  
 Address Parkersburg, W.Va.  
 Farm C.S. McCarty  
 Tract Acres 235 Lease No. \_\_\_\_\_  
 Well (Farm) No. 3-6-10-13 Serial No. \_\_\_\_\_  
 Elevation (Spirit Level) see Above.  
 Quadrangle Ripley  
 County Jackson District Ravenswood  
 Engineer Mrs. S. Hayes  
 Engineer's Registration No. 1429  
 File No. \_\_\_\_\_ Drawing No. \_\_\_\_\_  
 Date 9-23-48 Scale 1"=800'

STATE OF WEST VIRGINIA  
 DEPARTMENT OF MINES  
 OIL AND GAS DIVISION  
 CHARLESTON

JAC-114-A #10  
 WELL LOCATION MAP  
 FILE NO. JAC-112-A-#3  
 JAC-115-A #13 JAC-113-A-#6

+ Denotes location of well on United States Topographic Maps, scale 1 to 62,500, latitude and longitude lines being represented by border lines as shown.

- Denotes one inch spaces on border line of original tracing.

EC

66 Liverpool (161)

C. S. McCARTY NO.13 WELL.

Ravenswood District, Jackson County, W. Va.  
By South Penn Oil Co.  
On 235 acres.  
Elevation, 800.57'.  
Completed Sept. 3, 1930.  
Oil well. 40 bbls.  
From Heck's notes.

115A

	Top.	Bottom.
Big Lime	1985	- 2040
Big Injun Sand	2040	- 2070
Berea Sand (oil, 2454-2462') (El.1650.43')	2451	- 2462