

JACK - A 80,001

WEST VIRGINIA GEOLOGICAL SURVEY

77
REASSIGNED
127-A

J. H. Starr No. 1 Well.

Grant District, Jackson County, W. Va.

By J. H. Starr et al.

Jac-A on map.

Elevation 820.5' L.

250 M. cu. ft. gas (Brown Shale).

Located 0.9 mi. S. of 39° 00' and 4.05 mi. W. of 81° 35'—NC—Ripley
Quadrangle.

Near head of northwestern branch of Redbush Run.

1.8 mi. S. W. of Medina; 3.05 mi. N. E. of Wilding.

	Top.	Bottom.	Thickness.	Elevation (top)
Big Lime -----	1760	1857	97	- 939
Big Injun Sand -----	1860	1870	10	-1039
Berea Sand -----	2303	2307	4	-1482
Corniferous Lime -----	4645	4652	7+	-3824

Thickness, Devonian Shales, 2348 feet.

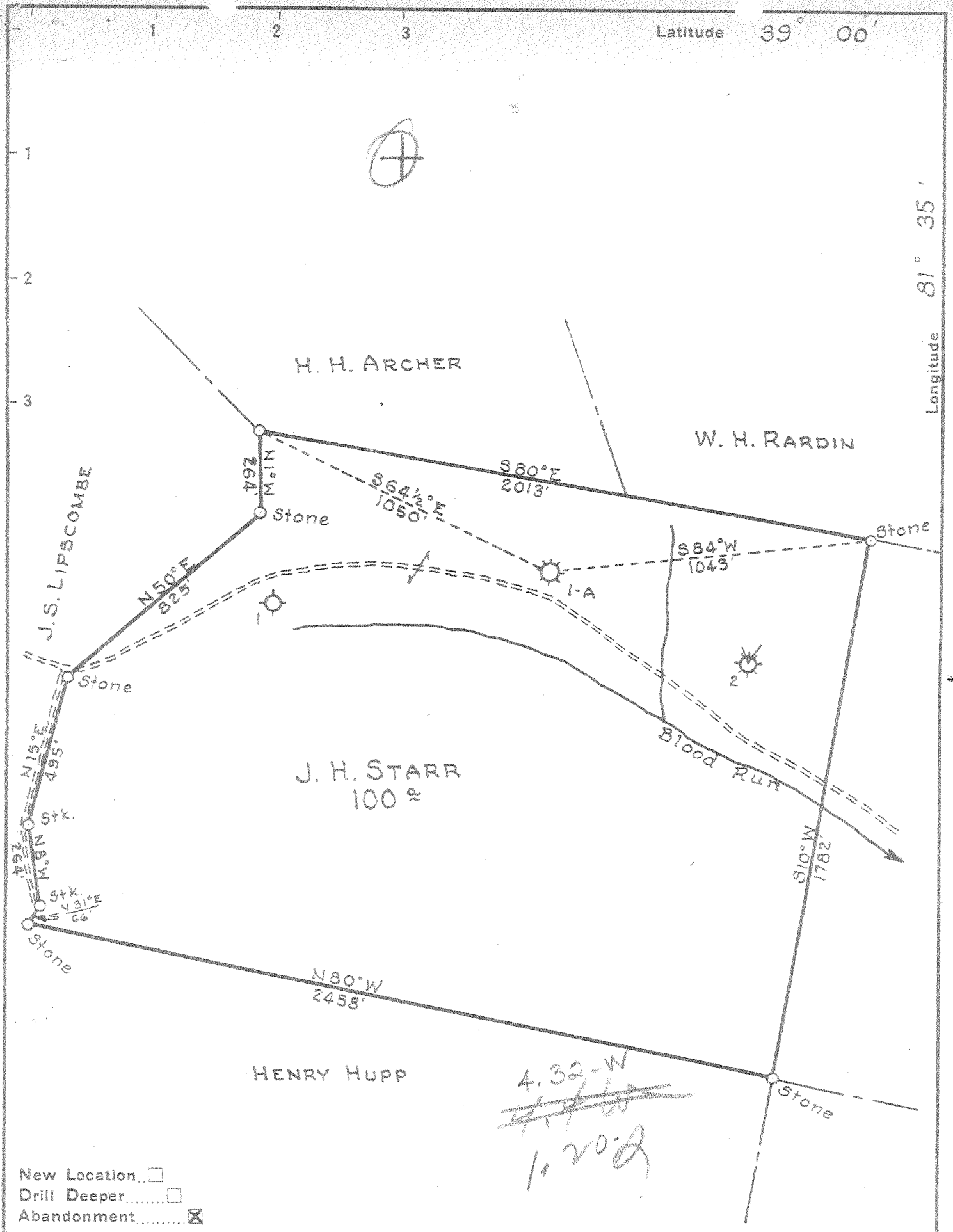
Total depth, 4652'.
463

Remarks: Completed March 14, 1931.

Water at 660', 1190', 1295', and 1860'.

Show oil and gas in Berea Sand.

Vol. XVI



New Location
 Drill Deeper
 Abandonment

Company VALLEY STEEL PRODUCTS Co.
 Address ST. LOUIS, MISSOURI
 Farm J. H. STARR
 Tract _____ Acres 100 Lease No. _____
 Well (Farm) No. 1-A Serial No. F-12243
 Elevation (Spirit Level) 774
 Quadrangle RIPLEY
 County JACKSON District GRANT
 Engineer PAUL E. JOACHIM
 Engineer's Registration No. 669
 File No. 60-103 Drawing No. _____
 Date 12-10-51 Scale 1" = 400'

STATE OF WEST VIRGINIA
 DEPARTMENT OF MINES
 OIL AND GAS DIVISION
 CHARLESTON

WELL LOCATION MAP
 FILE NO. JAC-127-A

+ Denotes location of well on United States Topographic Maps, scale 1 to 62,500, latitude and longitude lines being represented by border lines as shown.

- Denotes one inch spaces on border line of original tracing.

DEEP WELL 6-6-192
 Elk-Poca (Gissonville) JAC-127-A

J. H. STARR No. 1-A

VALLEY STEEL PRODUCTS Co.

JAC-127-A

288

Grant District, Jackson County, N. Va.

By J. H. Rosser et al., Charleston, W. Va.

Abandoned under permit Jan-127-4; Ripley quadrangle.

On 100 acres. This well drilled without permit.

Elevation, 774' L.

Drilling commenced Feb. 1, 1930; completed March 14, 1931.

Shut March 31, 1931, at 765-4645', with 5500' gelatin.

6 1/2" casing, 1200' (galled); 5 1/2", 1875'; 2" tubing, 2400'.

Water, 1180'. Water at 1285 and 1350'. Small amount of water in Injun.

Show of gas, 2303-2307'. Small show of gas at 3460-4645'.

Gas well. Record to Dept. of Mines stamped Nov. 2, 1951.

Record to 307 from Dept. of Mines (Linberg) May 24, 1952. O.P.No. 288.

	Top.	Bottom.
Red rock	0	300
Slate and shells	300	390
Red rock	390	430
White slate	430	460
Red rock	460	490
✓ Pittsburgh sand	560	660
Slate, red rock, mud	660	740
✓ 2nd Pittsburgh sand	740	765
Red rock, shells, slate, etc.	765	1005
Blue lime	1005	1025
Sand	1025	1030
Slate	1030	1050
Lime	1050	1065
✓ Big Richard sand	1075	1117
Slate and sand, etc.	1117	1180
Sand	1180	1195
Slate	1195	1270
Sand	1270	1370
Slate and sand	1370	1530
✓ Salt sand	1530	1600
Slate	1600	1632
Lime	1632	1670
Merion sand - ?	1670	1760
✓ Big lime	1760	1830
Slate	1830	1835
Black lime	1835	1847
Sand	1847	1857
Slate	1857	1860
✓ Big Injun sand	1860	1870
Slate and shells	1870	2030
Shell and slate and shells	2030	2283
✓ Brown shale - Coffee Shale	2283	2303
✓ Green sand	2303	2307
Slate, shells, shale, etc.	2307	2461
Slate	2460	2470
Hard formation	2470	2525
Slate and shells	2525	2460
Hard shale	2460	2465
Dark slate	2465	2510
Shell	2510	2515
Shale	2515	2530
Shell	2530	2535
Slate and shells	2535	2630

J. N. STAN NO. 1-A Well. (Continued).

	Top.	Bottom.
Shale	3630	3655
Shell	3655	3660
Slate and shells	3660	3690
Shale	3690	3720
Slate	3720	3745
Brown shale	3745	3815
Slate	3815	3860
Thin shell	3860	3882
Slate	3882	3985
Slate and lime	3985	4005
Brown shale	4005	4015
Slate and shells	4015	4095
Dark shale	4095	4500
Shale, dark-brown	4500	4645
✓ <i>Diagra (bivaliferous) Lime - ONTARIO</i>	4645	4652
Total depth		4652

HUNTERSVILLE

463