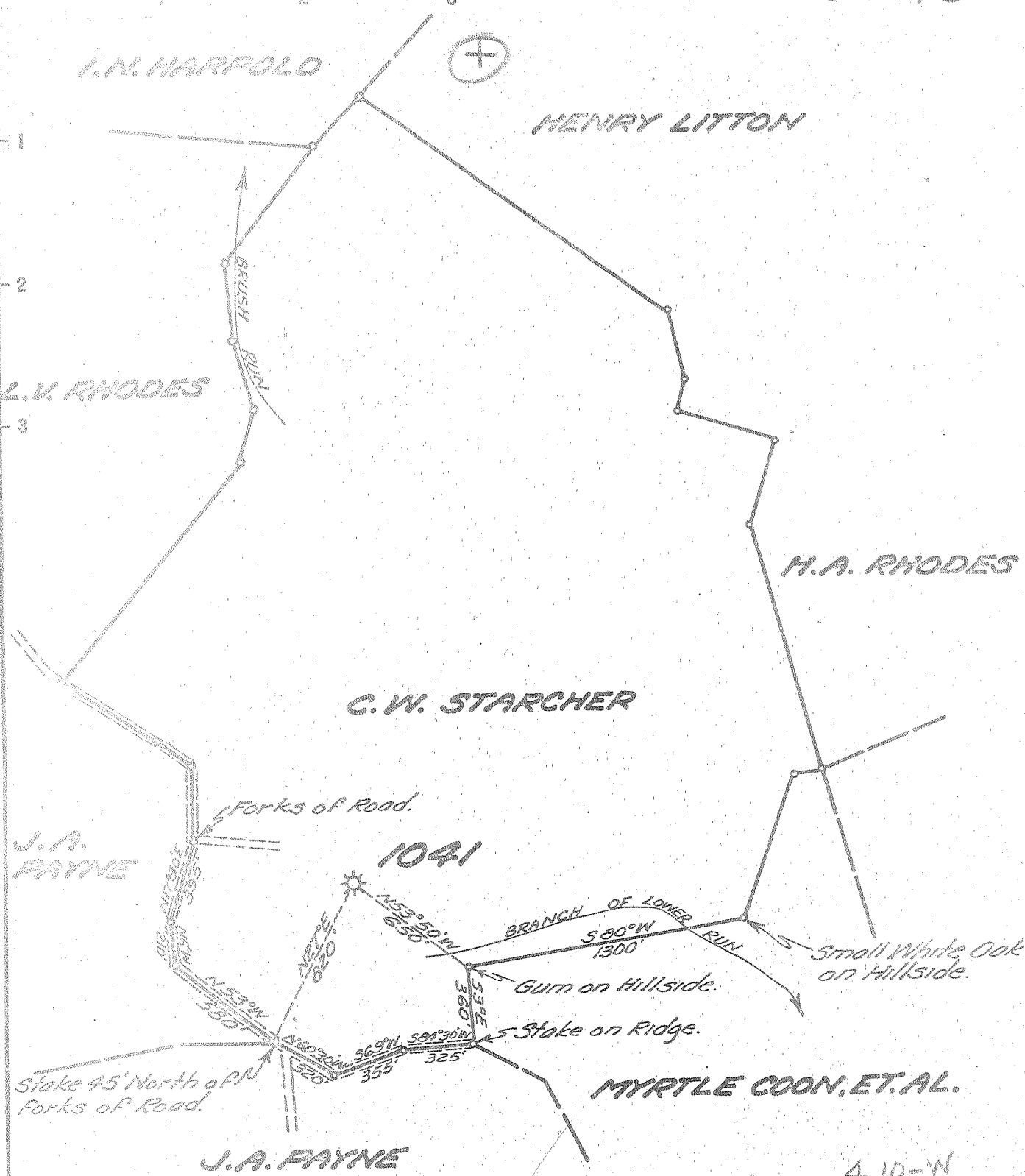


Latitude 29° 45'

Longitude 81° 30'



- New Location
- Drill Deeper
- Abandonment

MAY 11 1954

4.10-W  
~~4.17-W~~  
~~0.6-S~~  
 0.59-S

Company	UNITED FUEL GAS CO.
Address	CHARLESTON, W. VA.
Farm	C. W. STARCHER
Tract	Acres 224 Lease No. 16170
Well (Farm) No.	1 Serial No. 1041
Elevation (Spirit Level)	947.00'
Quadrangle	KENNA
County	JACKSON District WASHINGTON
Engineer	Paul E. Washburn
Engineer's Registration No.	669
File No.	64-85 Drawing No.
Date	4-23-54 Scale 1"=660'

STATE OF WEST VIRGINIA  
 DEPARTMENT OF MINES  
 OIL AND GAS DIVISION  
 CHARLESTON

WELL LOCATION MAP  
 FILE NO. JAC-133-A

† Denotes location of well on United States Topographic Maps, scale 1 to 62,500, latitude and longitude lines being represented by border lines as shown.

- Denotes one inch spaces on border line of original tracing.

6-6-163

C.W. STARCHER NO. 1 (1041) - U.F.G. Co. - JAC-133-A



