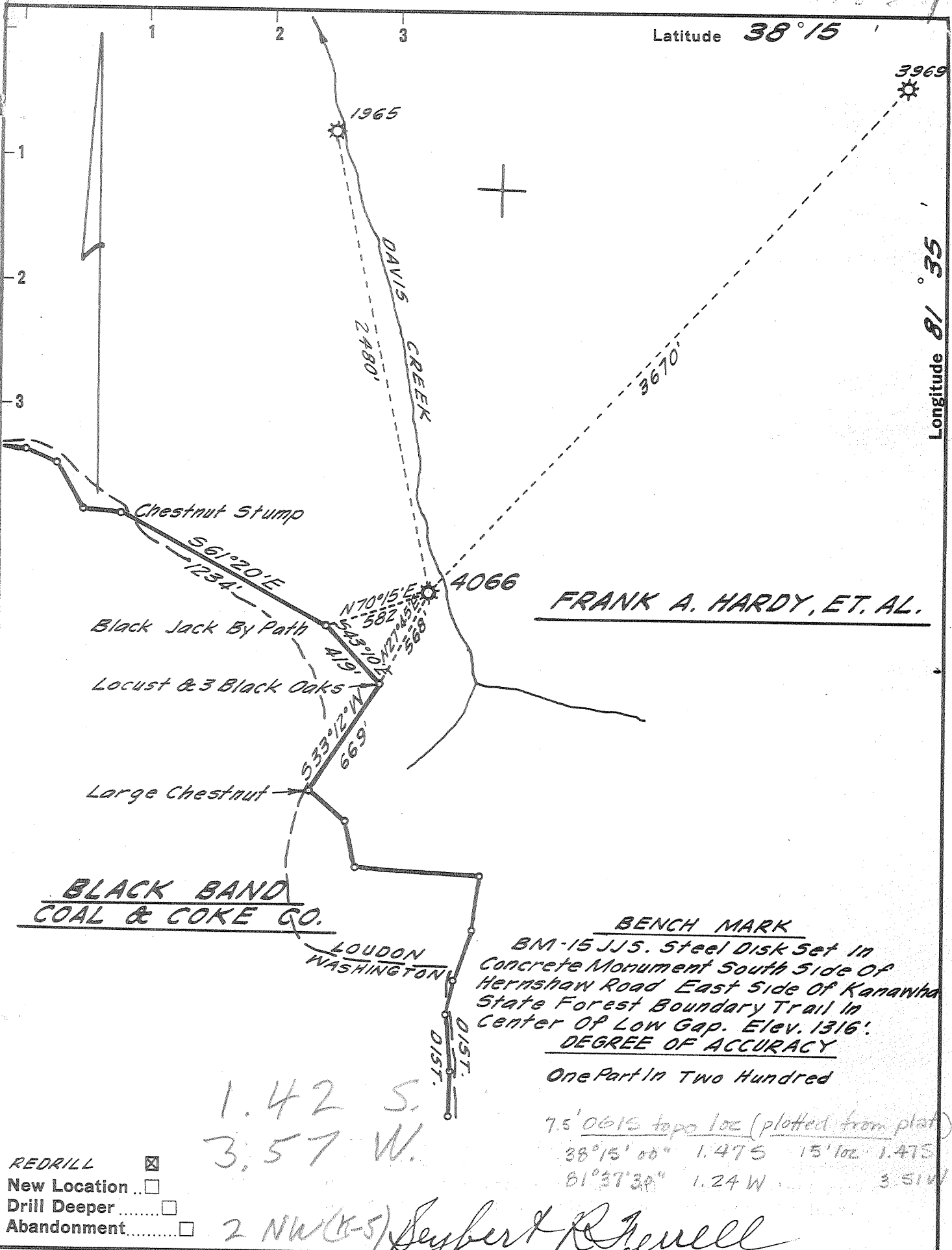


Latitude 38° 15'

Longitude 81° 35'



- REDRILL
- New Location
- Drill Deeper
- Abandonment

Company **UNITED FUEL GAS CO.**  
 Address **CHARLESTON, W. VA.**  
 Farm **FRANK A. HARDY, ET. AL.**  
 Tract \_\_\_\_\_ Acres **198** Lease No. **60765**  
 Well (Farm) No. \_\_\_\_\_ Serial No. **4066**  
 Elevation (Spirit Level) **1143.70'**  
 Quadrangle **PEYTONA - NC**  
 County **KANAWHA** District **LOUDON**  
 Engineer **Seybert & Revell**  
 Engineer's Registration No. **2529**  
 File No. **60-51** Drawing No. \_\_\_\_\_  
 Date **JULY 13, 65** Scale **1" = 660'**

STATE OF WEST VIRGINIA  
 DEPARTMENT OF MINES  
 OIL AND GAS DIVISION  
 CHARLESTON

**WELL LOCATION MAP**  
 FILE NO. **KAN. 42-Re-Drill**

+ Denotes location of well on United States Topographic Maps, scale 1 to 62,500, latitude and longitude lines being represented by border lines as shown.

- Denotes one inch spaces on border line of original tracing.

K&E 156 IMPERIAL TRACING CLOTH T.M. 60046  
 samples 4600 - 5500 - 1195' - 1710' H Deep Well

Loudon District, Kanawha County, W. Va.  
 United Fuel Gas Co.

*KAN-42*

On 12,008 acres, surface and mineral rights owned by Black Band  
 Coal & Coke Co., W. C. Hardy, Agent, Charleston, W. Va.

Drilled under permit issued Nov. 25, 1929.  
 Elevation, 1128' B.

13" conductor, 16"; 10" casing, 251'.

Coal was encountered at 55-60, and 190-195'.

Completion reported to Dept. of Mines Jan. 13, 1930.

Record filed to depth of 290' only.

	Top.	Bottom.
Clay	0	20
Sand	20	55
Coal	55	60
Slate	60	70
Sand	70	80
Slate	80	190
Coal	190	195
Slate	195	290

*T.D. 5488 in McKenzie*

*Orisk 4767-*

*Will 5431- 55*



12-15-65

STATE OF WEST VIRGINIA  
DEPARTMENT OF MINES  
OIL AND GAS DIVISION 6  
RE-DRILL  
WELL RECORD

Rotary   
Spudder   
Cable Tools   
Storage

Quadrangle Peytona  
Permit No. KAN-42-Redrill

Oil or Gas Well (KIND)

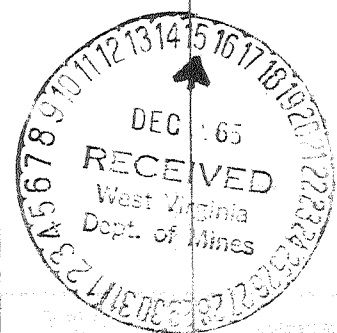
Company United Fuel Gas Company  
Address P. O. Box 1273 Charleston, W. Va. 25325  
Operator Frank A. Hardy, et al Acres 198  
Location (waters) Davis Creek  
Well No. 4066 Elev. 1143.70  
District Loudon County Kanawha  
The surface of tract is owned in fee by \_\_\_\_\_  
Address \_\_\_\_\_  
Mineral rights are owned by Frank A. Hardy, et al  
Rupert Route Address Lewisburg, W. Va.  
Drilling commenced Aug. 20, 1965  
Drilling completed Sept. 30, 1965  
Date Shot \_\_\_\_\_ From \_\_\_\_\_ To \_\_\_\_\_  
With \_\_\_\_\_  
Open Flow \_\_\_\_\_ /10ths Water in \_\_\_\_\_ Inch  
\_\_\_\_\_ /10ths Merc. in \_\_\_\_\_ Inch  
Volume 1,299,000 Newburg Cu. Ft.  
Rock Pressure 1800 lbs. 48 hrs.  
Dil. \_\_\_\_\_ bbls., 1st 24 hrs.  
WELL ACIDIZED (DETAILS) \_\_\_\_\_  
WELL FRACTURED (DETAILS) \_\_\_\_\_

Casing and Tubing	Used in Drilling	Left in Well	Packers
Size			Kind of Packer
16			
13 3/8	275' Cemented	30 sacks	
10			Size of
8 5/8	1724' Cemented	with 176 sacks	
6 5/8			Depth set
5 3/16			
4 1/2	5476' Cemented	250 sacks	
3			Perf. top
2			Perf. bottom
Liners Used			Perf. top
			Perf. bottom

Attach copy of cementing record.  
CASING CEMENTED \_\_\_\_\_ SIZE \_\_\_\_\_ No. Ft. \_\_\_\_\_ Date \_\_\_\_\_  
Amount of cement used (bags) \_\_\_\_\_  
Name of Service Co. \_\_\_\_\_  
COAL WAS ENCOUNTERED AT 55 FEET 60 INCHES  
190 FEET 60 INCHES FEET INCHES  
FEET INCHES FEET INCHES

RESULT AFTER TREATMENT (Initial open Flow or bbls.) \_\_\_\_\_  
ROCK PRESSURE AFTER TREATMENT \_\_\_\_\_ HOURS \_\_\_\_\_  
Fresh Water \_\_\_\_\_ Feet \_\_\_\_\_ Salt Water \_\_\_\_\_ Feet \_\_\_\_\_  
Producing Sand \_\_\_\_\_ Depth \_\_\_\_\_

Formation	Color	Hard or Soft	Top	Bottom	Oil, Gas or Water	Depth	Remarks
Surface			0	20			
Sand			20	55			Perforated from 5439-5445' with 14 glass jets.
Coal			55	60			
Slate			60	70			
Sand			70	80			Fractured Newburg 10-5-65 with 750# J-111, 500# J-84, 20 gallons F-52, 30,000# 20-40 sand and 689 bbls. 689 water
Slate			80	190			
Coal			190	195			
Slate			195	290			Final open flow after fractured 60-10 W 4 1/2" 1,299 M.
Sand			290	320			
Slate			320	405			
Sand			405	448			Shut in 10-29-65 in 4 1/2" casing.
Slate			448	480			
Sand			480	610			
Slate			610	660			
Sand			660	695			
Slate			695	710			LOGS RUN: Gamma Ray Gamma Gamma Induction
Salt Sand			710	750			
Slate			750	754			
Salt Sand			754	925			
Slate			925	990			
Salt Sand			990	1120			
Slate & Shells			1120	1165			
Sand			1165	1205			
Slate & Shells			1205	1235			
Maxon Sand			1235	1325			
Slate & Shells			1325	1340			
Lime			1340	1355			
Slate			1355	1373			
Little Lime			1373	1410			



Formation	Color	Hard or Soft	Top 6	Bottom	Oil, Gas or Water	Depth Found	Remarks
Pencil Cave			1410	1412			
Black Lime			1412	1445			
Pencil Cave			1445	1447			
Big Lime			1447	1677			
Slate			1677	1680			
Injun Sand			1680	1700			
Slate & Shells			1700	2070			
Coffee Shale			2070	2080			
Berea Sand			2080	2085			
Brown Shale			2085	4671			
Corniferous Lime			4671	4767			
Oriskany			4767	4775			
Dolomite & Lime			4775	5431			
Newburg			5431	5455			
Dolomite & Lime			5455	5488			
Total Depth			5488'				

Date December 13, 1965

APPROVED UNITED FUEL GAS COMPANY, Owner  
 By \_\_\_\_\_ (Title)  
 Supt., Civil Engineering Dept.  
 Biggs-Johnston-B'ithrow, Beckley



STATE OF WEST VIRGINIA  
DEPARTMENT OF MINES  
OIL AND GAS DIVISION

1930 STATE DEPARTMENT OF MINES

REVISED FORM 07-23-30

0-10000-13

Quadrangle Peytona

Permit No. KAN-42

WELL RECORD

Oil or Gas Well Gas

Company United Fuel Gas Co.  
Address P.O. Box 1273; Charleston 25, W. Va.  
Farm Black Band Coal & Coke Co. Acres 2,700  
Location (waters) Davis Creek  
Well No. 4066 Elev. 1128.0  
District Loudon County Kanawha  
The surface of tract is owned in fee by \_\_\_\_\_

Mineral rights are owned by Frank A. Hardy, et al  
Box 2468 Address Charleston 29, W. Va.

Drilling commenced Jan. 3, 1930  
Drilling completed Feb. 15, 1930

Date Shot \_\_\_\_\_ From \_\_\_\_\_ To \_\_\_\_\_  
With \_\_\_\_\_

Open Flow 5 /10ths Water in \_\_\_\_\_ Inch  
8 /10ths Merc. in 2 Inch

Volume 497,280 Cu. Ft.

Rock Pressure 148 lbs. \_\_\_\_\_ hrs.

Oil \_\_\_\_\_ bbls., 1st 24 hrs.

WELL ACIDIZED \_\_\_\_\_

WELL FRACTURED \_\_\_\_\_

Casing and Tubing	Used in Drilling	Left in Well	Packers
Size			Kind of Packer
16			Anchor
18			Size of _____
10		252	3x6-5/8x11
8 1/4		1157 Pulled	Depth set
6 3/4		1472	1476
3		1627	Perf. top
2			Perf. bottom
Liners Used			Perf. top
			Perf. bottom

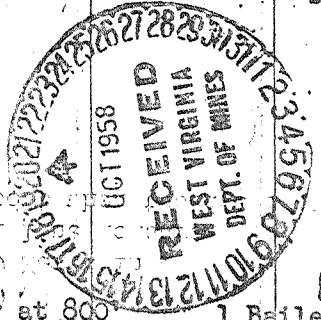
CASING CEMENTED	SIZE	No. Ft.	Date
COAL WAS ENCOUNTERED AT	55 FEET	48 INCHES	
	190 FEET	60 INCHES	

RESULT AFTER TREATMENT

ROCK PRESSURE AFTER TREATMENT

Fresh Water 73 Feet Salt Water 800 Feet 1020 1245

Formation	Color	Hard or Soft	Top	Bottom	Oil, Gas or Water	Depth	Remarks
Surface			0	20	Wood Conductor 16'		
Sand			20	55			
Coal			55	60			
Slate			60	70			
Sand			70	80	Water at 73'		3 bailers
Slate			80	190			
Coal			190	195			
Slate			195	290			
10" Casing set at				250	On casing protector		
Sand			290	320			
Slate			320	405			
Sand			405	448			
Slate			448	480			
Sand			480	610			
Slate			610	660			
Sand			660	695			
Slate			695	710			
Salt Sand 1st			710	750			
Slate			750	754			
Salt Sand 2nd			754	925	Water at 800'		1 Bailer
Slate			925	990			
Salt Sand 3rd			990	1120	Water at 1020'		Hole full
Slate & Shells			1120	1165			
8 1/4" Casing set at			1148		on Steel shoe and j Pulled out.		
Sand			1165	1205			
Slate & Shells			1205	1235			
Mason Sand			1235	1255			
Gas			1245	1255			
Slate & Shells			1325	1340	Show no test Water at 1245 1 bailer		



(over)

