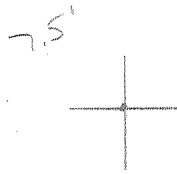


LATITUDE (15175) 38°25'



(15175) 81°30'
LONGITUDE

7.5 OGIS topo location

7.5' 10C	<u>2.235</u>	15' 10C	<u>2.235</u>
	<u>.36w</u>	(calc.)	<u>.36w</u>

Company ML Loy, Trustee

Farm WL Burdett 1

Quad Big Chimney 7.5 ^{EC} Charleston 15' (6)

County Kanawha

District EIR

WELL LOCATION MAP

File No. 039-131

Kanawha

Gas

DEEP WELL 6-6 Big Chimney (215)

KAN-131

M. L. Lay, Trustee
 506 Charleston Natl. Bank
 Charleston, W. Va.

COMPLETION DATA SHEET
 NO. 2
 FORMATION RECORD

Well #1

Name	Color	Character	Oil, Gas or Water	Top	Bottom	Thickness	Total Depth	Remarks
Surface				0	10	10		
Sand				10	17	7		
Coal				17	22	5		87'-8 1/4"
Salt Sand	Grey		Salt Water	742	1160	418		
Maxton Sand				1215	1285	70		
Little Line				1285	1308	23		
Pencil Cave				1308	1318	10		
Big Line		Gas	1372 to 1375	1328	1509	181		
Big Injun		Gas	1513 to 1514	1509	1537	28		1548' - 65 1/8"
Line	Black	Gas	1555	1537	1559	22		
Berea		Shell		1932	1936	4		
Shale	Brown			3640	3690	50		
Shale		Gas	3710 to 3715	3715	3840	125		
Shale				4300	4370	70		
Corniferous	Black			4714	4724	10		4756' - 5 3/16"
Corniferous	Grey			4724	4824 1/2	100 1/2		
Oriskany		Gas & Oil	4824 1/2 - 4827	4824 1/2	4835	10 1/2		
		Gas	4828 to 4830					
Total Depth					4835			

4714 4824
 645 645
 4069 4179

Well was not shot at _____ feet; well was shot at _____ feet.

Fresh water at 60 feet; salt water at 742 feet.

Well was producing hole.

February 16, 1935.
 Date

Approved *M. L. Lay Trustee*
 Owner *fi*

NOTE: All bottom formations must be noted as indicated above and all key-rocks and oil and gas sands must be recorded under their proper geological names in the district as well as any local names commonly used in the district for such strata.

FEB 18 1935

Kan-131

WEST VIRGINIA DEPARTMENT OF MINES

OIL AND GAS DIVISION

PRELIMINARY DATA SHEET NO. 1

File No. _____ Well No. 1

M. L. Lay, Trustee Company of Charleston, W. Va.

on the W. L. Burdett Farm

containing - 62 - acres. Location Waters of Coopers Creek

Elk District, in Kanawha County, West Virginia

The surface of the above tract is owned in fee by W. L. Burdett

of Big Chimney, W. Va. address, and the mineral rights are owned by

W. L. Burdett Big Chimney, W. Va. $\frac{1}{2}$ interest
Mrs. Lucy E. Rock Big Chimney, W. Va. $\frac{1}{2}$ interest

The oil and gas privileges are held under lease by the above named company, and this well is drilled under permit

No. Kan-131 issued by the West Virginia Department of Mines, Oil and Gas Division

February 20, 1934

Elevation of surface at top of well, 645 Spirit Barometer

The number of feet of the different sized casings used in the well.

11 feet 10" size. W30 conductor.

87 feet 8 1/4" size, csg. 1548" feet 6-5/8" sized csg.

4756 feet 5-3/16 size, csg. 4832 feet 2 sized csg.

feet size, csg. feet sized csg.

Hook Wall packer of 5-3/16" size, set at 4756 - 4761

Hook Wall Tubing packer of 2"x5-3/16" size, set at 4676

2" tubing, in casing perforated at 4811 feet to 4800 feet.

in casing perforated at _____ feet to _____ feet.

Coal was encountered at 17 feet, thickness 60 inches, and at _____

feet; thickness _____ inches; and at _____ feet; thickness _____ inches.

Liners were used as follows: (Give details) _____

February 15, 1935 Date.

Approved M. L. Lay, Trustee

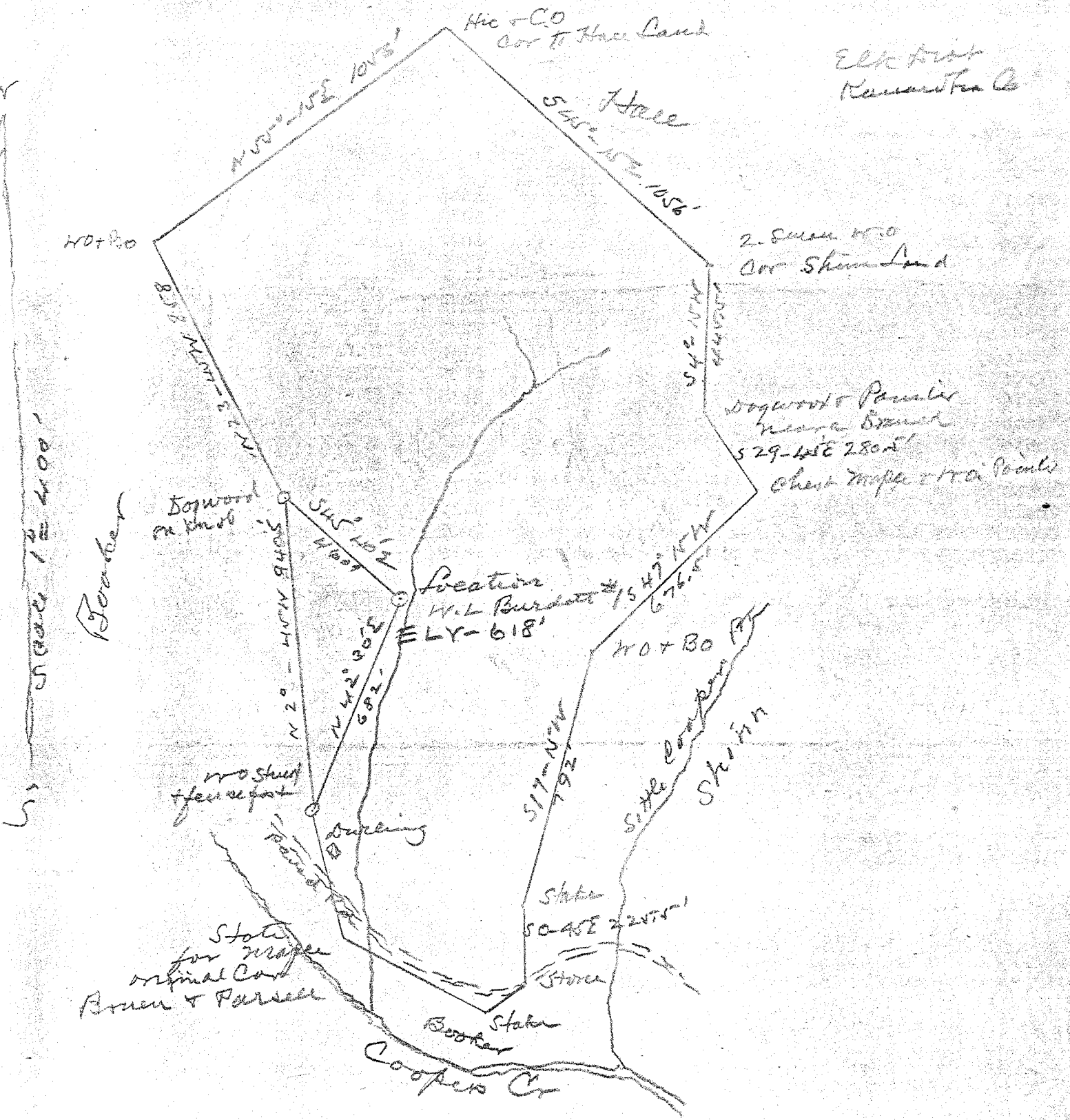
By _____ (TITLE)

6-6-192

FEB 18 1935

M. L. Lay Trustee

Kan 131



Elk first
Kannan Ka Q

2.5 Acre or so
Cor Shinn Land

Dogwood & Ponderosa
near Branch
529-45E 280ft
Chert Maple & Trai Ponds

Location
W.L. Burdett
ELY-618

Boundary

51
52
53
54
55
56
57
58
59
60
61
62
63
64
65
66
67
68
69
70
71
72
73
74
75
76
77
78
79
80
81
82
83
84
85
86
87
88
89
90
91
92
93
94
95
96
97
98
99
100

State for bridge
original Cor
Bruen & Parsell

State
50-45E 220ft

State
Booker
Coopers Cr

7.5' OGIS	loc	5' loc
38° 25'	.365	.365
81° 30'	2.230	2.230