

LATITUDE (7.5' 15") 38° 25'

(7.5') 81° 32' 30"

LONGITUDE

7.5'

7.5 OGIS topo location

7.5' 10C .835  
.04W

15' 10C .835  
(calc.) 2.30W

Company Edveca Oil Co

Farm Gellatin Mining Co. (H&S 5) 1

Quad Big Chimney 7.5' / Charleston <sup>EC</sup>

County Kanawha

District EK

WELL LOCATION MAP

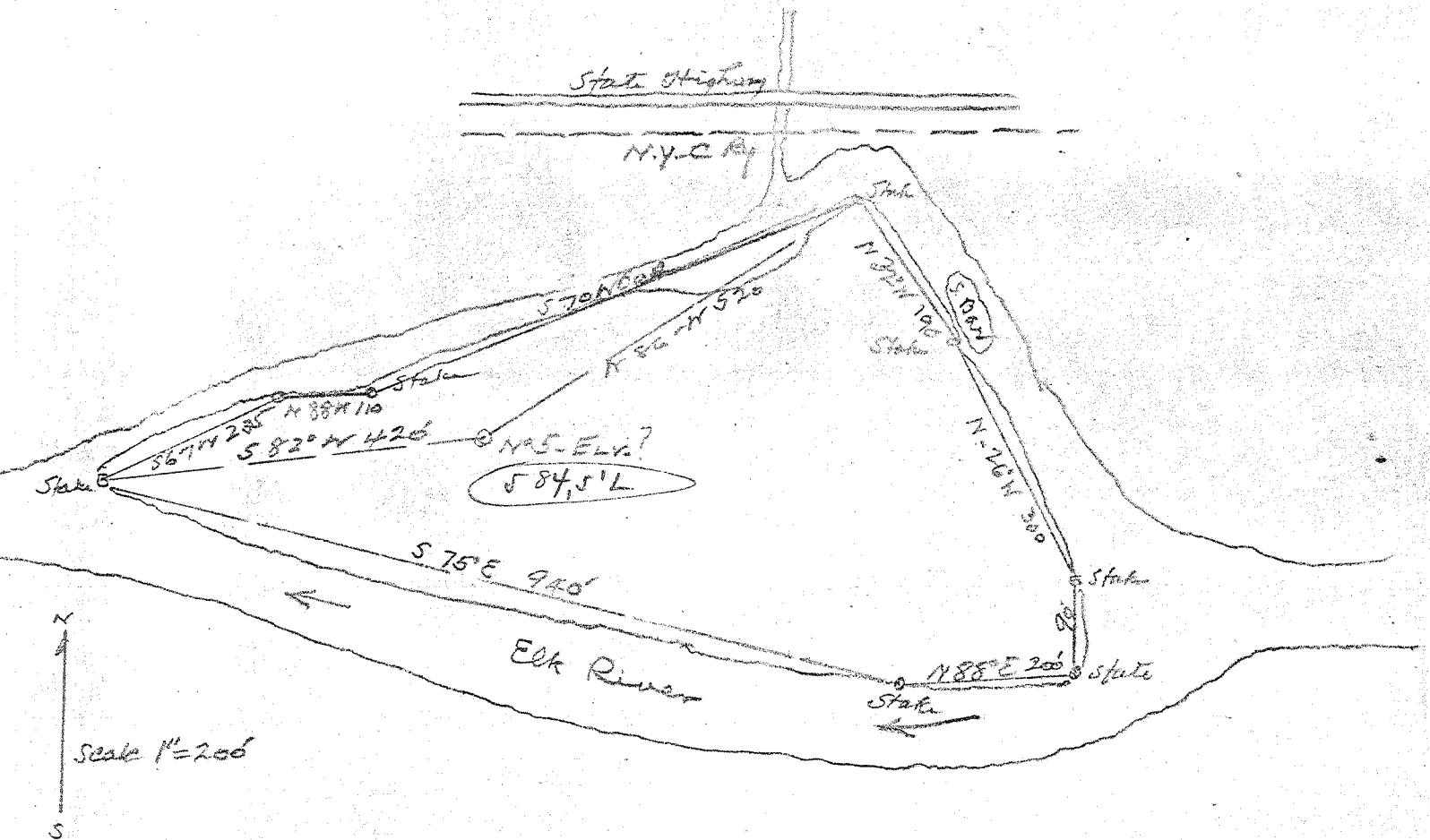
File No. 039-149

Kanawha

Day

DEEP 6-0 Big Chimney (215)

Well #5. Hand & Smith  
 Elk Hill - Kanawha Co  
 Salsbery Mining Co Farm  
Kan 149



DEEP

GELLATIN MINING COMPANY NO. (HAS 5) WELL. 1 No. 375 O.P. - Kanawha  
(MATHONY & WERTZ)

Elk District, Kanawha County, W. Va.  
By Hedeca Oil Co., Charleston, W. Va. (Veleair C. Smith).  
On 25 acres.  
Drilled under permit Kan-149 issued Nov. 1, 1934.  
Elevation... *1183*  
10" casing, 41'; 8", 48'; 6-5/8", 1471' 6".  
No coal was encountered. No liners used.  
Completion reported to Dept. of Mines June 3, 1936.  
Dry hole.

*0.89 mi. S of N 38° 25' 2.15 W. of Long - W. of 81° 30' EC Charleston Quad*

	Top.	Bottom.
Sand and slate to		1183
Line	1183	1216
Slate	1216	1228
Line	1228	1260
Slate	1260	1268
Line	1268	1428
Big Injun Sand	1428	1469
Line	1469	1580
Slate	1580	1585
Line	1585	1602
Slate and shells	1602	1715
Weir Sand	1715	1728
Slate and shells	1728	1875
Brown shale	1875	1881
Berea Sand	1881	1885
Slate and lime shells	1885	1920
Sand	1920	2074
Slate	2074	2498
slate and shells	2498	3381
Brown shale	3381	3766
Slate	3766	4323
Shale	4323	4560
Slate	4560	4575
Dark shale	4575	4651
Corniferous Line	4651	4756
Oriskany Sand	4756	4776
Corniferous Line (Helderberg)	4776	4785
Line	4785	5098
Dolomite and lime	5098	5400
Black line	5400	5570
Sand NEWBURG	5570	5610
Black line	5610	5620
Total depth		5620

*(Location impossible for stated elevation)*

Record of

COOPER'S CREEK, ISLAND WELL - - - - Kanawha County, West Virginia.

Owner: V. C. Smith (H and S -5) Well No. 1

Well Completed: January 1935

Drillers: Metheny and Wertz.

Top Feet.	Bottom Feet.	Thickness Feet.	Description
0	1016	1016	Not recorded
1016	1028	12	Medium to coarse white sandstone.
1028	1105	77	Not recorded
1105	1108	3	Medium to coarse, nearly white sandstone.
1108	1171	63	Not recorded.
1171	1183	12	Coarse, nearly white sandstone.
1183	1216	33	Not recorded.
1216	1228	12	Gray shale.
TOP OF GREENBRIER LIMESTONE			
1228	1320	92	Gray limestone with a little sand in lower part.
1320	1360	37	Light gray oolitic, sandy, limestone, sand grains fairly well rounded.
1360	1428	68	Very light gray sandy limestone; larger sand grains rounded and frosted.
TOP OF POCONO FORMATION.			
1428	1465	37	Nearly white, medium to coarse sandstone, only slightly calcareous.
1465	1595	130	Fine to very fine gray sandstone and hard, dark-gray, silty micaceous shale.
1595	1708	113	Dark gray silty, micaceous shale, with some very fine sandstone.
1708	1734	26	Fine to very fine gray sandstone, with large amount of dark gray shale. (Driller's "Weir Sand" 1715-1728.)
1734	1825	91	Dark Gray silty, micaceous shale and lighter gray very fine sandstone.
1825	1870	45	Light brown and gray, very fine silty sandstone with some dark brown shale.
1870	1881	11	Dark brown to black shale with small lumps of pyrite.
1881	1885	4	Light brown to gray very fine sandstone, with considerable pyrite (Driller's "Berea Sand")
1885	1906	21	Gray shale with some fine gray sandstone.
1906	1960	54	Gray and grayish red silty shale with some gray to brown very fine shaly sandstone.
1960	2175	215	Gray silty shale with thin layers of very fine silty gray sandstone. There is a little grayish-red shale in some of the samples in this interval, but perhaps it has fallen from above.
2175	2420	245	Very fine gray shaly sandstone and gray silty shale. Some of the 17 samples in this interval are about half sandstone and others are 70 or 80% sandstone. The texture of a large part of this material really corresponds better with the term <u>Siltstone</u> , than either shale or sandstone.
2420	2498	78	Gray silty shale and very fine gray shaly sandstone. Similar to last interval described, but averages a little more shale.
2498	2570	72	Brown and gray very fine, shaly sandstone and brown and gray shale.
2570	2920	350	Gray shale with some very fine shaly sandstone. Some samples slightly brown.

Top	Bot- tom.	Thick- ness.	Description.
2920	3087	167	Gray and brown shale and very fine shaly sandstone. Small spherical pyrite concretions in the gray shale. Average texture is finer than gray-shale. in last interval described.
3087	3302	215	Medium to dark gray and shale with a little very fine sandstone. Some brown fragments in a few samples.
3302	3403	101	Gray shale and siltstone. Lighter colored than last described interval.
3403	3450	47	Gray to black shale. Some fragments very silty.
3450	3610	160	Medium gray shale and siltstone.
3610	3795	185	Gray to black shale, much of it rather silty; some brown shale in lower part of interval.
3795	4240	445	Gray shale, mostly not so dark as last described interval. Somewhat silty.
4240	4500	240	Gray to black shale. Prevailing color is a very dark gray. Texture averages finer than for most of the shales above this. A few white calcareous fragments in the samples from most of this interval.
4500	4530	30	Dark gray to black shale with some brown fragments.
4560	4575	15	Dark gray to black shale, moderately calcareous.
4575	4651	76	Black calcareous shale with considerable pyrite. Some in lumps up to 3 or 4 mm.
TOP OF ONONDAGA LIMESTONE.			
4651	4715	64	Very cherty gray limestone; some very fine light-gray sandstone with glauconite between 4670 and 4675- and 4710 - 4715.
4715	4725	10	Light gray somewhat cherty limestone with fine quartz sand and a little glauconite.
4725	4750	25	Highly calcareous, very fine light-gray glauconitic sandstone. There is also some limestone and chert in this interval.
TOP OF ORISKANY SANDSTONE.			
4750	4776	26	Medium to fine, nearly white, highly calcareous sandstone. Grains fairly well rounded.
4776	4779	3	Highly calcareous, fine gray sandstone with a little glauconite.

SUMMARY OF THICKNESS OF FORMATIONS.

Little Lime and Big Lime.....	200	feet
Big Injun. . . . .	37	"
Interval, base of Greenbrier to top of Onondaga, . . . . .	3223	"
( 3262 feet in Roane County deep well. )		
Onondaga Limestone . . . . .	99	"
Oriskany Sandstone . . . . .	29	"
Bottom of Oriskany apparently not reached.		

By Hand & Smith, Veleair C. Smith.

On Island at mouth of Coopers Creek, in Elk River, Elk District,  
Kanawha County, W. Va.

Elevation, 584.5'.

1016--	1020	Salt Sand
1020 -	1028	Salt Sand, Break
1105 -	1108	Maxton Sand
1171 -	1183	B Salt Sand
1216 -	1260	Little Lime
1268 -	1428	Big Lime (SLM, top)
1428 -	1465	Big Injun
1469 -	1580	Black lime (casing point, S.L. 1471.6')
1580 -	1585	Slate and shells
1585 -	1602	Black lime
1602 -	1620	Lime and shells
1620 -	1630	LS & shells, & Sl. & shells.
1630 -	1715	Slate and shells
1715 -	1734	Weir Sand
1734 -	1870	Black slate
1870 -	1880	Brown shale
1880 -	1885	Berea Sand
1890 -	1920	Lime shells
1920 -	2095	White slate
2095 -	2115	Slate
2115 -	2570	Slate and shells
2570 -	2965	White slate
2965 -	2980	Slate and shells
2965 -	2990	White slate
2980 -	3010	Slate
2997 -	3111?	Brown shale
3010 -	3070	Slate
3070 -	3085	Slate shells
3085 -	<del>3085</del> 3193	Brown shale
3193 -	3403	Slate and shells
3403 -	3795	Brown shale
3795 -	3855	White slate
3855 -	3870	Brown shale?
3870 -	3885	White slate
3870 -	3900	Brown shale
3900 -	4290	White slate
4290 -	4320	Slate
4325 -	4335	Slate and shale
4335 -	4555	Brown shale
4560 -	4575	White slate
4575 -	4660	Brown shale
4660 -	4760	Corniferous Lime
4760 -	4776	Oriskany Sand
4776 -	4779	Lime
	4785.5	Total depth.

Deep well  
Kan 1249

WELL RECORD CONTINUED

Lease - Gellatin Mining Co. - 25 Acres - Elk District - Kanawha County - Drilled by V. C. Smith - Owned by Edveca Oil Company.

<u>Depth</u>	<u>Description &amp; Remarks</u>
4651 - 4655	Compact - Black Shale - Dark Lime with Black Flint & white qtz. pebbles.
4655 - 4680	Dark Lime and Black Chert.
4680 - 4720	Very Light Grey Lime & Light to Milky Chert.
4720 - 4746	Grey Lime & Brown to Grey Chert.
4746 - 4756	Light Grey Lime & Milky Grey Chert - A very little fine white sand.
TOP OF ORISKANY AT ABOUT 4757	
<u>Sand Proper</u>	
4756 - 4760	White irregular sand grains in a compact mass - No visible cementing material between the grains.
4760 - 4761	White fine irregular grained sand cemented into mass by Lime.
4761 - 4762	Fine White sand with very much Lime between grains - More Limy than above.
4762 - 4765	White Lime with some clear white sand grains - Much more Limy than above.
4765 - 4767	Fine White Sand and some White qtz. pebbles - cemented into a mass by Lime.
4767 - 4772	Grey Lime with a few white sand grains cemented into a mass.
4772 - 4776	Grey Lime & some fine white sand grains.
4776 - 4779	Grey Lime & Very little white sand grains.
4779 - 4785	--
4785 - 4804	Grey Cherty Lime
4804 - 4812	Fine Wht. qtz. sd. closely cem. with Lime
4812 - 4813	Whit. Sd. & Dark Grey Lm.
4813 - 4815	--
4815 - 4820	Fine Wht. Qtz. Sd. closely cemented with Lime
4820 - 4821	Grey Black Lm. Some Grey Chert & Fine Sand.
4821 - 4822	Dark Grey Lm. Very coarse and blacker.
4822 - 4829	Light to Med. grey Lime - Some Chert.
4829 - 4831	Very Cherty Med. Grey Lime - drills fine
4831 - 4844	Light Grey Limy Chert beds.
4844 - 4855	Dark Grey to Black Chert beds - Limy
4855 - 4862	Black Coarse Lime - some dark Chert.
4862 - 4870	Med. Grey Lime - Drills fine & light Chert.
4870 - 4880	Dark Grey Lm. - Dark Chert - Drills <del>fine</del> Med.
4880 - 4892	Light Grey Lm. - Some light Chert - Drills Med.
4892 - 4900	Light Grey Lm. - Light Chert - Drills very fine
4900 - 4907	Light Grey Lime - Light Chert - Drills Medium
4907 - 4914	Light Grey Lime & Light Chert - Drills very fine
4914 - 4920	Med. Grey Lime - much milchy chert - Drills med.
4920 - 4940	Dark Grey to Black Lime - Some Calcite - Light chert.
4940 - 4944	Light Brown Lm. - Drills med. - Chert & Calcite
4944 - 4953	Dark Grey Lm. Coarse - Some Chert - Base of Chert
4953 - 4976	Dark Grey to Black Lm. - Drills Fine - no chert.

WELL RECORD CONT'D - GELLATIN MINING CO. LEASE

Edveca Oil Co.

<u>Depth</u>	<u>Description &amp; Remarks</u>
4976 - 4990	Dark Grey Crystalline Lime - Coarse - Calcite
4990 - 5003	Brown & Dark Grey Lime - Fine - Crystalline
5003 - 5021	Very light Dull Lime & some Grey Lime - Drills Med.
5021 - 5030	Light Grey to brown crys. Lm. (Still a little chert after disin. - drills fine
5030 - 5041	Dark Grey Lime - Drills very fine
5041 - 5054	Dense Brown to Black Lm. White Chst. Anhydrite
5054 - 5068	Dense Black Lm. Drills fine - No anhydrite.
5068 - 5098	Dense dark Grey to Black Lime - some Anhydrite
5098 - 5160	Dense Grey to Dark Grey - dolomite - Fine to Med.
5160 - 5182	Grey Crystalline - Dolomite - Coarse to med.
5182 - 5211	Dark grey Dolomite - Some Anhydrite - Drills med. to fn.
5211 - 5231	Dark Dense grey Dolomite - Drills Coarse
5231 - 5311	Light Grey Dolomite & Lime - Drills Med.
5311 - 5320	Dark Grey Dolomite & Lime - Med. to very fine
5320 - 5357	Black Dolomite - Some Brown & Lime - Drills med.
5357 - 5383	Light & Dark Grey Dolomite - Drills med.
5383 - 5388	Black Crystalline Dolomite - Drills very fine
5388	Mottled - Cavernous - Crystalline Dolo. Lime Mole Pous ?



Kan. 149  
DEEP WELL

Owner: V. C. Smith (H & S - 5)  
 Location: C. C. Island, Kanawha County, W. Va.  
 Well Completed: January, 1935.  
 Well No. 1, Matheny and Wertz, Drillers.

Depth in feet.

1016 to 1020	Salt Sand	1630 to 1640	Slate & Shells
1020 to 1028	Salt Sand, break	1640 to 1653	"
1105 to 1108	Maxton sand	1653 to 1663	"
1171 to 1183	B Salt Sand	1663 to 1673	"
1216 to 1228	Top, Little Lime.	1673 to 1683	"
1228 to 1240	Little Lime	1683 to 1690	"
1240 to 1260	Little Lime	1690 to 1708	"
1268 <del>is</del> is steel line measure, top of Big Lime/		1708 to 1715	"
1268 to 1272	Big Lime/and slate	1715 to 1723	Weir Sand
1272 to 1280	Big Lime	1715 to 1734	Weir Sand
1280 to 1290	Big Lime	1715 to 1728	Drillers Weir logged at.
1290 to 1300	Big Lime	1734 to 1746	Black Slate
1300 to 1310	Big Lime	1746 to 1755	"
1310 to 1320	Big Lime	1755 to 1765	"
1320 to 1330	Big Lime	1765 to 1775	"
1330 to 1340	Big Lime	1775 to 1785	"
1340 to 1354	Big Lime	1785 to 1795	"
1354 to 1357	Big Lime	1795 to 1805?	Black Slate (May be error)
1360 to 1370	Big Lime	1805 to 1825	Black Slate
1370 to 1380	Big Lime	1825 to 1836	"
1380 to 1390	Big Lime	1836 to 1850	"
1390 to 1400	Big Lime	1850 to 1860	"
1400 to 1412	Big Lime	1860 to 1870	"
1418 to 1428	Big Lime at 1418	1870 to 1880	Brown Shale
Bottom, 1428	Big Lime	1880 to 1883	(Mostly Berea Sand).
1428 to 1438	Injun Sand	Berea Logged at 1881 to 1885. (This sample does not look like Berea)	
1438 to 1448	Injun Sand	1883 to 1890	Berea and Shells.
1448 to 1454	Injun Sand	Bottom 1885 - Berea	
1448 to 1457	Big Injun Sand	1890 to 1906	Lime Shells
1457 to 1465	Bin Injun Sand	1906 to 1912	Lime Shells
1469 to 1474	Black Lime	1910 to 1920	Lime Shells
Casing Point, S. L. 1471.6		1920 to 1930	White slate, soft.
1474 to 1485	Black Lime	1930 to 1940	White slate
1485 to 1500	Black Lime	1940 to 1950	White slate, soft.
1500 to 1520	Black Lime	1950 to 1960	White Slate
1520 to 1526	Black Lime	1960 to 1970	"
1526 to 1531	Black Lime	1970 to 1980	"
1531 to 1538	Black Lime	1980 to 1990	"
1538 to 1545	Black Lime	1990 to 2000	"
1545 to 1555	Black Lime	2000 to 2010	"
1555 to 1565	Black Lime	2010 to 2020	"
1565 to 1575	Black Lime	2020 to 2030	"
1575 to 1580	Black Lime	2030 to 2038	"
1580 to 1585	Slate & Shells	2038 to 2050	"
1585 to 1595	Black Lime	2050 to 2065	"
1595 to 1602	Black Lime	2065 to 2074	"
1602 to 1620	Lime & Shells	2079 to 2085	"
1620 to 1630	Lime & Shells,	2085 to 2095	"
& Slate & Shells.		2095 to 2105	Slate.

Owner: V. C. Smith (H & S - 5) - Well No. 1, Location, C.C. Island, Kanawha County, WVa.  
 Page 2.

2108 to 2115	Slate	2600 to 2610	White Slate
2115 to 2125	Slate & Shells	2610 to 2620	"
2125 to 2135	"	2620 to 2630	"
2135 to 2145	"	2630 to 2641	"
2145 to 2155	"	2641 to 2650	"
2155 to 2165	"	2650 to 2663	"
2165 to 2175	"	2663 to 2677	"
2175 to 2185	"	2677 to 2694	"
2185 to 2196	"	2694 to 2714	"
2196 to 2205	"	2714 to 2725	"
2205 to 2215	"	2725 to 2735	"
2215 to 2223	"	2735 to 2745	"
2223 to 2230	"	2745 to 2755	"
2230 to 2240	"	2755 to 2765	"
2240 to 2250	"	2765 to 2775	"
2250 to 2260	"	2775 to 2790	"
2260 to 2270	"	2790 to 2806	"
2270 to 2280	"	2806 to 2815	"
228	"	2815 to 2825	"
2289 to 2299	"	2825 to 2835	"
2299 to 2308	"	2835 to 2845	"
2308 to 2318	"	2845 to 2850	"
2318 to 2328	"	2850 to 2860	"
2328 to 2340	"	2860 to 2872	"
2340 to 2350	"	2872 to 2885	"
2350 to 2360	"	2885 to 2900	"
2360 to 2370	"	2900 to	"
2370 to 2378	"	2890 to 2900	"
2378 to 2380	"	2900 to 2910	"
2380 to 2390	"	2900 to 2915	"
2390 to 2398	"	2910 to 2920	"
2398 to 2406	"	2920 to 2930	"
2406 to 2412	"	2915 to 2935	"
2412 to 2420	"	2930 to 2940	"
2420 to 2430	"	2935 to 2950	"
2430 to 2440	"	2940 to 2950	"
2440 to 2450	"	2950 to 2965	"
2450 to 2460	"	2965 to 2980	Slate & Shells
2460 to 2470	"	2965 to 2980	White Slate
2470 to 2480	"	2980 to 2990	"
2480 to 2490	"	2980 to 2995	Slate
2490 to 2498	"	2995 to 3010	"
2498 to 2510	"	2997 to 3111?	Brown shale
2510 to 2520	"	3010 to 3025	Slate
2520 to 2530	"	3050 to 3060	Slate
2530 to 2540	"	3060 to 3070	"
2540 to 2550	"	3070 to 3085	Slate Shells
2550 to 2560	"	3085 to 3087	Brown Shale
2560 to 2570	"	3087 to 3097	Brown Shale
2570 to 2580	White Slate	3097 to 3111	"
2580 to 2590	"	3111 to 3122	"
2590 to 2600	"		

Page 3.

V. C. Smith (H &amp; S - 5) Well No. 1 - C. C. Island, Kanawha County, W. Va.

3122 to 3135	Brown shale
3135 to 3145	"
3145 to 3155	"
3155 to 3165	"
3165 to 3175	"
3175 to 3183	"
3183 to 3193	"
3193 to 3200	Slate and Shells
3200 to 3212	"
3212 to 3223	"
3223 to 3227	"
3227 to 3235	"
3235 to 3245	"
3245 to 3255	"
3255 to 3265	"
3265 to 3280	"
3280 to 3295	"
3295 to 3302	"
3302 to 3320	"
3320 to 3335	"
3335 to 3345	"
3345 to 3350	"
3350 to 3360	"
3360 to 3370	"
3370 to 3380	"
3380 to 3390	"
3390 to 3403	"

V.C. Smith (H&S-5) Well - 1 - C.C. Island, Kanawha County, W.Va.

3403 to 3415	Brown Shale	4010 to 4020	White slate
3415 to 3425	"	4020 to 4035	"
3425 to 3435	"	4035 to 4050	"
3435 to 3445	"	4050 to 4070	"
3450 to 3460	"	4070 to 4090	"
3460 to 3478	"	4090 to 4112	"
3478 to 3485	"	4112 to 4130	"
3485 to 3495	"	4130 to 4145	"
3495 to 3505	"	4145 to 4160	"
3505 to 3515	"?	4160 to 4180	"
3515 to 3525	"?	4180 to 4198	"
3525 to 3548	"	4198 to 4215	"
3548 to 3558	"?	4215 to 4240	"
3558 to 3570	"	4240 to 4260	"
3570 to 3585	"	4260 to 4278	"
3585 to 3598	"	4278 to 4290	"
3598 to 3610	"?	4290 to 4305	Slate
3610 to 3625	"	4305 to 4320	"
3625 to 3637	"	4325 to 4335	Slate and shale
3637 to 3647	"	4335 to 4350	Brown shale
3647 to 3657	"	4350 to 4365	"
3657 to 3665	"	4365 to 4380	"
3665 to 3675	"	4380 to 4395	"
3675 to 3687	"	4395 to 4410	"
3687 to 3700	"	4410 to 4425	"
3700 to 3712	"	4425 to 4435	"
3712 to 3725	"?	4435 to 4445	"
3725 to 3737	"	4445 to 4455	"
3737 to 3756	"	4455 to 4465	"?
3750 to 3765	"	4455 to 4470	"
3765 to 3780	"	4470 to 4485	"
3780 to 3795	"	4485 to 4500	"
3795 to 3810	White slate	4500 to 4515	"
3810 to 3820	"	4515 to 4530	"
3820 to 3830	"	4530 to 4540	"
3840 to 3855	"	4540 to 4555	"
3855 to 3870	Brown shale ?	4560 to 4575	White slate
3870 to 3885	White slate	4575 to 4600	Brown shale
3870 to 3900	Brown shale	4600 to 4620	Brown shale
3900 to 3915	White slate	4625 to 4650	"
3915 to 3935	"	4651 to 4655	Lime
3935 to 3950	"	4655 to 4660	"
3950 to 3965	"	4660 to 4665	"
3965 to 3980	"	4665 to 4670	"
3980 to 3995	"	4670 to 4675	"
3995 to 4010	"	4675 to 4680	"
		4680 to 4685	"
		4685 to 4690	"

Page 5.

V.C. Smith (H & S - 5) Well No 1. -- C.C. Island, Kanawha County, W.Va.

4690	to	4700	Lime
4700		4705	Lime
4705	to	4710	Lime
4710	to	4715	Lime
4615	to	4721	Lime
4720	to	4725	Lime
4725	to	4730	Lime
4730	to	4735	Lime
4735	to	4742	Lime
4742	to	4746	Lime
4746	to	4750	Lime
4750	to	4755	Lime
4755	to	4760	Lime
4760	to	4762	Sand
4762	to	4765	Sand
4765	to	4767	Sand
4767	to	4772	Sand
4772	to	4776	Sand
4776	to	4779	Lime