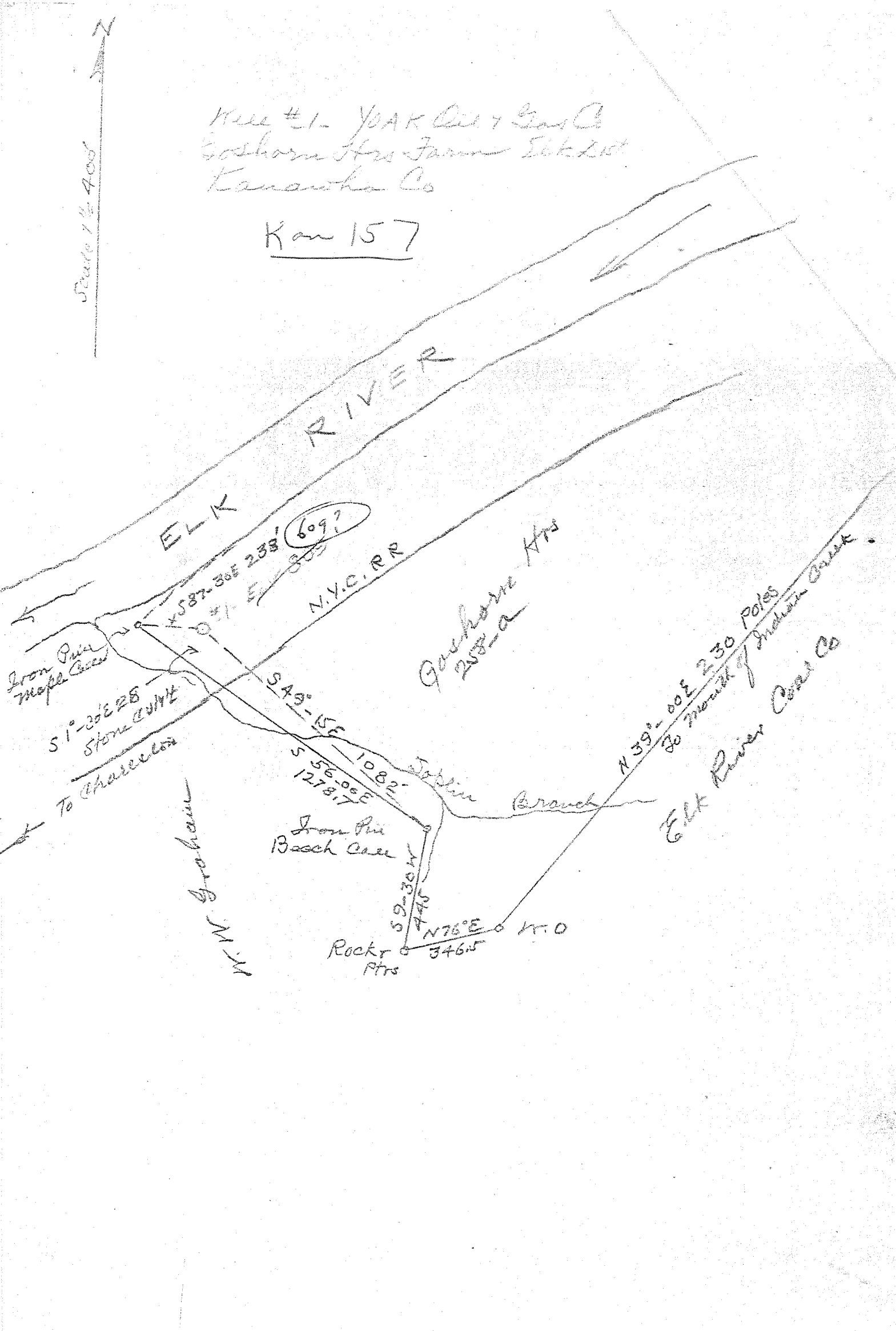


Scale 1/4" = 400'

Well #1 - YOK Oil & Gas Co
Goshorn Hrs Farm Elk Dist
Kanawha Co

Kan 157



157

Flk District, Kanawha County, W. Va.

Yoak Oil & Gas Co., Charleston, W. Va. (Howard Elster).

On 258 acres, surface and mineral rights owned by Goshorn Heirs,
Charleston, W. Va.

Drilled under permit Kan-157, issued Dec. 18, 1934.

Elevation, 608' B.

16" casing, 16'; 12 $\frac{1}{2}$ "⁴, 63'; 10", 100'; 8 $\frac{1}{4}$ "⁴, 1512'; 6-5/8" liner, 375';
5-3/16", 4600'.

No packers used.

Coal was encountered at 85-90.

8" hole was drilled to top of Corniferous and 375' of 6-5/8" liner
set on this shoulder to shut off a cave.

Completion reported to Dept. of Mines Nov. 22, 1935.

Well was shot at 4821-4857'.

Gas well. Before shot, 107,780 cu. ft.; after shot, 3 hrs., 1,200,000'.

	Top.	Bottom.
Soil	0	16
Shell	16	32
Sand and gravel	32	63
Shell	63	75
Gravel	75	85
Coal	85	90
Slate and shells	90	150
Little Dunkard Sand	150	200
Slate and shells	200	250
Big Dunkard Sand	250	300
Slate and shells	300	412
Sand	412	453
Slate and shells	453	500
Gas Sand	500	530
Salt Sand (showing of oil, 552')	530	1016
Break	1016	1020
Sand	1020	1176
Maxton Sand	1176	1226
Slate cave	1226	1231
Little Lime	1231	1273
Big Lime (showing of oil, 1427')	1273	1462
Big Injun Sand	1462	1503
Black lime	1503	1521
Squaw Sand (showing of gas, 1521')	1521	1545
Slate and shells	1545	1718
Weir Sand (showing oil & gas, 1742')	1718	1765
Black lime	1765	1815
Slate and shells	1815	1905
Shale, brown	1905	1912
Berea shell	1912	1917
Slate and shells	1917	2315
Hard lime	2315	2360
Slate and shells	2360	2620
Slate, white	2620	2718
Slate and shells	2718	3090
Shale, brown	3090	3112
Slate and shells	3112	3127
Slate and shells	3127	3412
Shale, brown	3412	3435
Slate and shells (small showing gas, 3500' to 3700')	3435	3965
Shale, brown	3965	3972

0.82 S 38° 25'
1.28 W 81° 30'
Charleston, W. Va.
EC

GOSHORN HEIRS NO. 1 WELL (Continued).

	Top.	Bottom.
Slate and shells	3972	- 4354
Shale, brown (showing of gas, 4363')	4354	- 4400
Slate and shells	4400	- 4442
Shale, brown	4442	- 4555
Lime, shell	4555	- 4570
Slate and shells	4570	- 4602
Brown shale	4602	- 4634
White cave	4634	- 4658
Shale, black	4658	- 4713
Carboniferous Lime	4713	- 4826
Oriskany Sand (gas, 4826-4830')	4826	- 4841
Lime and sand, black, hard, to bottom	4841	- 4857