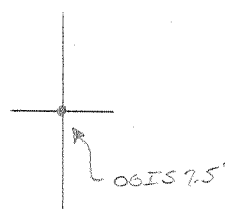


LATITUDE (75°15') 38'20"

LONGITUDE (75°15') 81°30"



7.5 OGIS topo location

7.5' LOC	<u>2.44g</u>	15' LOC	<u>2.44g</u>
	<u>1.16w</u>	(calc.)	<u>1.16w</u>

Company South Penn Natural Gas

Farm Kate C. Scott 1

Quad Charleston East / Charleston 15' SE

County Kanawha

District Malden

WELL LOCATION MAP

File No. 039-178

Kanawha

Kate C. Scott No. 1 Well (....).

2.40 mi S. 38° 28'
1.17 mi W. 8° 30'

38° 28'
8° 30'

Malden District, Kenawha County W. Va.

By South Penn Oil Co., Chamber of Commerce Bldg., Pittsburgh, Pa.

On 970 acres, surface and mineral rights owned by Kate C. Scott et al.,

Central Trust Co., Charleston, W. Va.

Drilled under permit Ken-178, issued June 24, 1935.

Location made June 11, 1935. Rig commenced, July 3, 1935; completed, July 15, 1935.

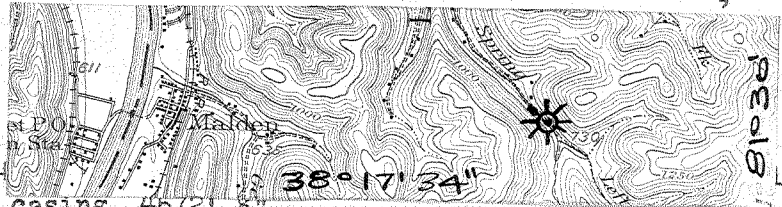
Drilling commenced, July 18, 1935; completed, Nov. 7, 1935.

Rig contractor, John Craig. Drilling contractor, Devine Bros.

Elevation, 721.75' L. *of compass crank,*

Location, on Spring Fork, 0.6 mi. below mouth of Left Fork, 2 mi. E. of Malden,

SE - Charleston Quadrangle.



15" casing, 17' 8"; 13½" casing, 17' 8"; 6-5/8" casing, 1738' 5"; 5½" casing, 4272' 8";

Steel casing shoes: 6-5/8", set at 1724'; 8½", set at 1118'; 5-3/16", set at 4538'.

Completion reported to Dept. of Mines Dec. 19, 1935.

Well was not shot. Fresh water at 90'. Gas well in Oriskany Sand.

~~Top~~ Bottom.

0 - 18	Gravel
18 - 27	Sand
27 - 30	Coal
30 - 55	Slate
55 - 76	Sand (gas, 70', 4/10 water 2" opening, 94,560 cu. ft.; reduced to 6/10 water 1" opening, 29,000 cu. ft.)
76 - 130	Slate and shell (hole full water, 90')
130 - 165	Sand
165 - 205	Slate
205 - 265	Sand
265 - 400	Slate and shell
400 - 780	1st Salt Sand
780 - 830	Slate and shell
830 - 942	2nd Salt Sand
942 - 976	Black slate
976 - 1045	Maxton Sand
1045 - 1089	Little Lime
1089 - 1096	Slate
1096 - 1099	Lime
1099 - 1102	Slate
1102 - 1107	Lime
1107 - 1112	Pencil Cave
1112 - 1285	Big Lime (gas, 1216-1218', 4/10 water in 1" opening, 23,640 cu. ft.)
1285 - 1325	Big Injun Sand, red (gas, 1304-1307', 30/10 water in 1" opening, 65,150 cu. ft.; reduced to 20/10 water in 1" opening, 53,280 cu.ft.)

~~Top~~ Bottom.

1325 - 1406	Slate
1406 - 1416	Sand and shells
1416 - 1716*	Slate
1716 - 1724	Brown shale
1724 - 1733	Berea Sand
1733 - 2210	Slate and shell
2210 - 2860	White slate
2860 - 2905	Slate and shell
2905 - 2979	Brown shale
2979 - 2993	Dark lime
2993 - 3005	Slate and lime
3005 - 3009	Lime, hard
3009 - 3225	Slate and shells
3225 - 3585	Brown shale
3585 - 3720	Slate and shell
3720 - 3775	Slate and shell
3775 - 3875	Slate and shell, gray
3875 - 4000	Slate and shell, light
4000 - 4150	Slate and shell, dark
4150 - 4175	Slate and shell
4175 - 4512	Dark shale
4512 - 4515	Sand shells
4515 - 4520	Shale, dark
4520 - 4610	Corniferous Lime
4610 - 4619	Oriskany Sand (gas, 4610', 40/10 water in 2" opening, 304,320 cu. ft.; gas, 4611', 20/10 water in 4-7/8" open- ing, 1,332,000 cu. ft.; gas, 4614', 36/10 mercury in 3" opening, 2,339,280 cu. ft.)

WEST VIRGINIA DEPARTMENT OF MINES
OIL & GAS DIVISION
WELL RECORD

Permit No. Kan-178-D
- Quad.

Gas Well

Company South Penn Natural Gas Co.
Address Union Tr. Bldg., Parkersburg, W. Va.
Farm Kate C. Scott ACRES 970
Location Campbells Creek
Well No. 1 - D.D. ELEV. 721.75
District Malden - Kanawha County
Surface -
Mineral Kate C. Scott, et al % Central Tr. Co.
Charleston, W.Va.

CASING & TUBING
(No record given)

Commenced March 6, 1941
Completed April 3, 1941
Shot 1st shot 3/31/41 - depth 4648-4655
2nd " 4/ 2/41
Open Flow 7/10ths W in 2" Op. before shot
Volume -
Rock Pressure -
Water -

OCT 20 1941

(C) 125 chart v

Previous Total Depth	4619	Gas test before D.D. 6/10 W-2" - 116,000 c.f.
Oriskany	4619 4666	Gas 4623 8/10 W 2" - 134,000 c.f. Gas 4623-4625 9/10 W 2" - 143,000 c.f. Gas 4625-4626 11/10 W 2" - 158,000 c.f. Gas 4626-4650 Reduced to 7/10 W 2" - 126,000 c.f. Gas 4650-4653 17/10 W 2" - 199,000 c.f. Gas 4653-4667 Reduced to 7/10 W 2" - 126,000 c.f.
Lime	4666 4667	
Total Depth	4667	

2.335 38° 20'
1.18 W 81° 30'
Charleston yard
SE

4751 4157
 222 222

 4029 4135

4667
 4619

 48 - DD Ag.

C-6 219

SOUTH PENN OIL COMPANY

Kan 178

Lease No.
79261

Kate G. Scott #1
S 78 W 32

970 Acres

Malden District

Kenawha County

West Virginia

Location Made: June 11, 1935 Drilling Commenced: July 18, 1935
 Rig Commenced: July 3, 1935 Drilling Completed: Nov. 7, 1935
 Rig Completed: July 15, 1935 Drilling Contractor: Devine Bros.
 Rig Contractor: John Craig

Elevation: 925-L
721.75

Depth 4619'

Sand: Oriskany

	Top	Bottom	
15" Drive Pipe		17' 3"	
Gravel		18	
Sand	18	27	
Coal	27	30	
Slate	30	55	
13 1/2" Casing		40' 4"	
Sand	55	70	
Gas		70	4/10-W, 2" Opening 94,560, Reduced to 6/10-W, 1" Opening 29,000
Slate & Shell	76	130	
Water		90	Hole Full
Sand	130	165	
Slate	165	205	
Sand	205	265	
10" Casing		249' 6"	
Slate & Shell	265	400	
1st Salt Sand	400	780	
Slate & Shell	780	830	
2nd Salt Sand	830	942	
Black Slate	942	976	
Maximum Sand	976	1045	
Little Lime	1045	1089	
Slate	1089	1096	
Lime	1096	1099	
Slate	1099	1102	
Lime	1102	1107	
Pencil Cave	1107	1112	
Big Lime	1112	1285	
8 1/4" Casing		1118	
Gas	1216	1218	4/10-W, 1" Opening 25,640
Big Injun (Red)	1295	1325	
Gas	1304	1307	30/10-W, 1" Opening 65,160-Reduced to 20/10-W, 1" Opening 53,280
Slate	1325	1406	
Sand & Shells	1406	1416	
Slate	1416	1716	
Brown Shale	1716	1724	
6-5/8" Casing		1724	
Berea Sand	1724	1733	
Slate & Shell	1733	2210	
White Slate	2210	2860	
Slate & Shell	2860	2905	
Brown Shale	2905	2979	
Dark Lime	2979	2993	
Slate & Lime	2993	3005	

SOUTH PENN OIL COMPANY

Kate C. Scott #1

	Top	Bottom	
Lime Hard	3005	3009	
Slate & Shells	3009	3225	
Brown Shale "	3225	3585	
Slate & Shell	3585	3720	
Slate & Shell	3720	3775	
Slate & Shell	3775	3875	(Grey)
Slate & Shell	3875	4000	(Light)
Slate & Shell	4000	4150	(Dark)
Slate & Shell	4150	4175	"
Dark Shale "	4175	4512	
Sand Shells	4512	4515	
Shale (Dark)	4515	4520	
Corniferous	4520	4610	
5 1/2" Casing		4538	
Oriskany	4610	4819	Not through
Gas		4610	40/10-W, 2" Opening 304,320
Gas		4611	20/10-W, 4, 7/8" Open. 332,000
Gas		4614	36/10-M, 3" Opening 2,339,280
Total Depth		4619	

Gas: 36/10-M, 3" Open. 2,339,280 cu. ft.
Oil: -----

Casing Record

	<u>Put In</u>	<u>Pulled Out</u>
15"	17' 8"	17' 8"
13 1/2"	40 4	6 5
10"	249 6	
8 1/2"	1126 11	
6-5/8"	1738 5	
5 1/2"	4572 8	

Packer Record

Steel Csg.	Shoe		
6-5/8		1724'	9-6-35
8-1/4"		1118	8-21-35
5-3/16"		4538'	10-15-35