

WW-7
8-30-06



West Virginia Department of Environmental Protection
Office of Oil and Gas

WELL LOCATION FORM: GPS

API: 47-039-00234 WELL NO.: 804640

FARM NAME: Mohler Lumber Company

RESPONSIBLE PARTY NAME: Core Appalachia Operating, LLC

COUNTY: Kanawha DISTRICT: Washington

QUADRANGLE: Julian

SURFACE OWNER: Mohler Timberlands, LLC

ROYALTY OWNER: Mohler Mineral, LLC

UTM GPS NORTHING: 4,226,767.14

UTM GPS EASTING: 428,213.26 GPS ELEVATION: 248.45 m ^{815'}

The Responsible Party named above has chosen to submit GPS coordinates in lieu of preparing a new well location plat for a plugging permit or assigned API number on the above well. The Office of Oil and Gas will not accept GPS coordinates that do not meet the following requirements:

1. Datum: NAD 1983, Zone: 17 North, Coordinate Units: meters, Altitude: height above mean sea level (MSL) – meters.
2. Accuracy to Datum – 3.05 meters
3. Data Collection Method:

Survey grade GPS : Post Processed Differential

Real-Time Differential

Mapping Grade GPS : Post Processed Differential

Real-Time Differential

4. Letter size copy of the topography map showing the well location.

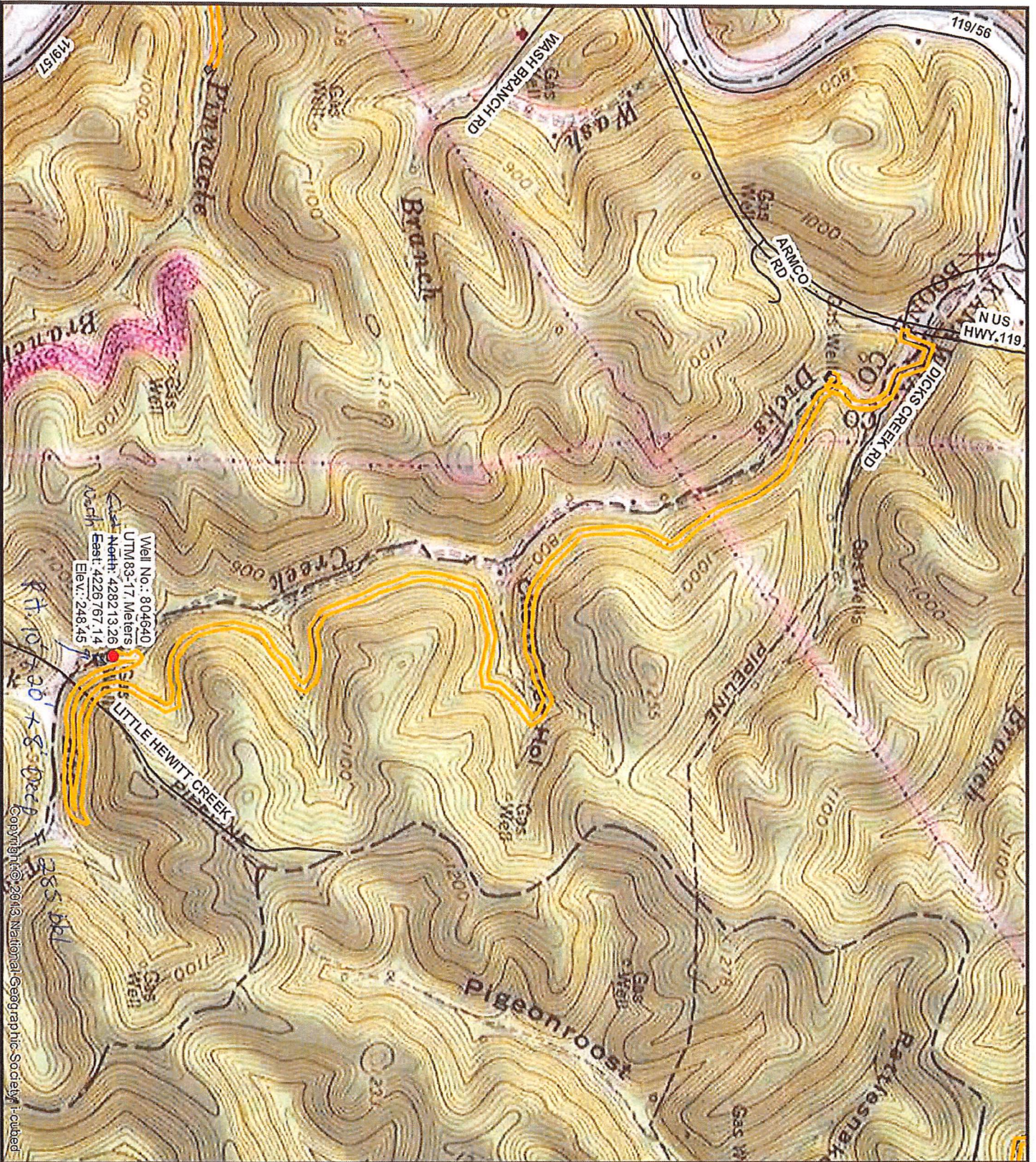
I the undersigned, hereby certify this data is correct to the best of my knowledge and belief and shows all the information required by law and the regulations issued and prescribed by the Office of Oil and Gas.

[Signature]
Signature

Director Production
Title

7-14-2020
Date

RECEIVED
Office of Oil and Gas
JUL 17 2020
WV Department of
Environmental Protection



Well No.: 804640
 UTM83-17 Meters
 East: 428213.26
 North: 4226767.14
 Elev.: 248.45

RT. 107.30' x 8.00' Dec 8
 285.64'

Copyright © 2013 National Geographic Society. Included



Diversified Gas & Oil Corporation
 100 Diversified Way
 Pileville KY, 41051

804640

Plugging Map

47-639-60834

Legend

● Well

— Access Road

— Plugging

RECEIVED
 Office of Oil and Gas
 JUL 7 2020
 Public Records
 WV Department of Environmental Protection

