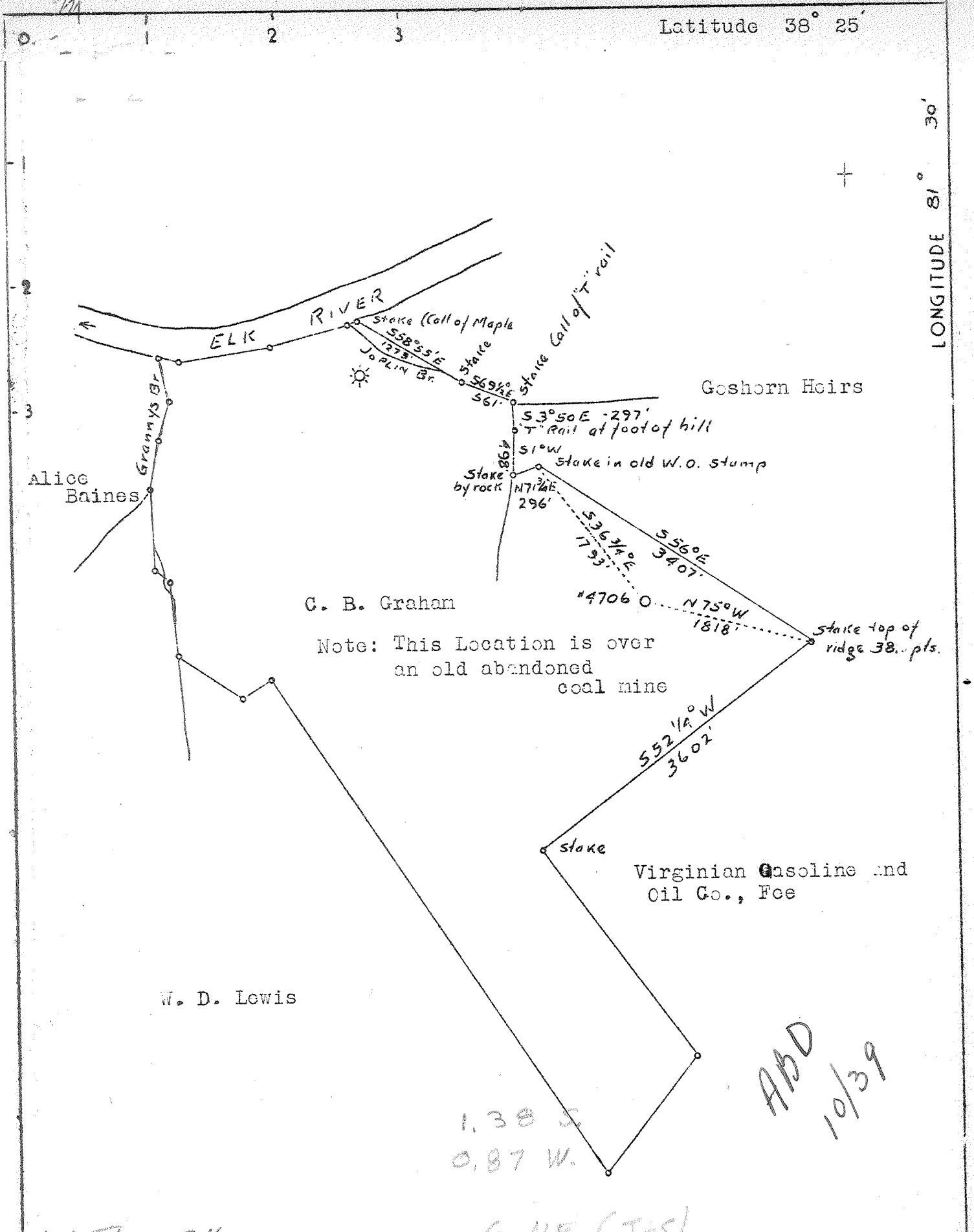


P

Latitude 38° 25'

LONGITUDE 81° 30'



C. B. Graham

Note: This Location is over an old abandoned coal mine

Virginian Gasoline and Oil Co., Inc

W. D. Lewis

1.38 S.
0.87 W.

ADD
10/39

Vol XL, A, 316

6 NE (J-S)

Company	UNITED FUEL GAS CO.
Address	Charleston, W. Va.
Farm	C. B. Graham
Tract	Acres 700 Lease No. 4889
Well (Farm) No.	2 Serial No. 4706
Elevation (Spirit Level)	
Quadrangle	Charleston - EC
County	Kanawha District Elk
Engineer	G. A. Cunningham
Engineer's Registration No.	659
File No.	68-59 Drawing No.
Date	Nov. 30, 1936 Scale 1" = 1320'

STATE OF WEST VIRGINIA
Department of Mines
OIL AND GAS DIVISION
CHARLESTON

WELL LOCATION MAP

File No. Key 309

+ Denotes location of well on U. S. Topographic Maps, scale 1 to 62,500, latitude and longitude lines being represented by border lines as shown.

- Denotes one inch spaces on border line of original tracing.

Samples F5 (5097-5130) 6-6-215 Deep Well

WEST VIRGINIA DEPARTMENT OF MINES

OIL & GAS DIVISION

WELL RECORD

Permit No. Ken-309

GAS WELL

Charleston Quad.

CASING & TUBING

Company	United Fuel Gas Co.	18	254	254
Address	Charleston, W. Va.	13	254	254
Farm	C. B. Graham ACRES 700	10	734	pulled
Location	Elk River	8-5/8	2050	2050
Well No.	4706 - ELEV. 883.85	7	5027	5027
District	Elk - Kanawha County			
Surface & Mineral	Mrs. C.F. Graham, Charleston, W. Va.	COAL ENCOUNTERED:		
Drilling commenced	Feb. 8, 1937	Feet	Inches	
Drilling completed	July 10, 1937	195	60	
Shot	Not shot	219	60	
Open Flow	48/10ths Water in 7 inch			
Volume	3,308, etc			
Rock Pressure	750 lbs. 7 hrs.			
Fresh Water	275'			
Salt Water	990 & 1035'			

Formation Color ^{Has} Top base Result Formation Color ^{Has} Top Base Result

Soil		0	16						
Slate		16	120						
Sand		120	195						
Coal		195	200						
Slate		200	219						
Coal Mine		219	224						
Slate		224	275						
Sand		275	300						
Slate		300	400						
Sand		400	475						
Slate & Shells		475	590						
Sand		590	650						
Slate		650	720						
Slate & Shells		720	770						
Sand		770	828						
Slate & Shells		828	845						
Sand		845	870						
Slate		870	880						
Salt Sand		880	1310						
Slate		1310	1315						
Sandy Lime		1315	1406						
Maxon Sand		1406	1548						
Black Lime		1580	1590						
Big Lime		1590	1760						
Injun Sand		1760	1800						
Red Rock		1800	1815						
Weir Sand		1815	2045						
Slate & shells		2045	2200						
Shale		2200	2210						
Slate & shells		2210	2800						
Black Slate		2800	3000						
White Slate		3000	3390						
Shale & shells		3390	3470						
Slate & Shells		3470	3700						
Shale		3700	3760						
Slate & Shells		3760	3800						
Light Shale		3800	4125						
Slate & Shells		4125	4305						
Brown Shale		4605	4920						
White Slate		4920	4953						
Brown Shale		4953	5014						
Corniferous Lime		5014	5130						
Criskany Sand		5130	5134						
Total Depth			5134						

No 5 10'
W 275

5014 5130
884 884
4130 4246

ATS