

LATITUDE

38 3230

150.18

LONGITUDE

+

1.735  
0.63W

7'5 OGIS topo location

7.5' loc \_\_\_\_\_  
\_\_\_\_\_

15' loc 2.619  
(calc.) 0.63W

Company \_\_\_\_\_

Farm \_\_\_\_\_

Quad Romance 75; Kenna SC

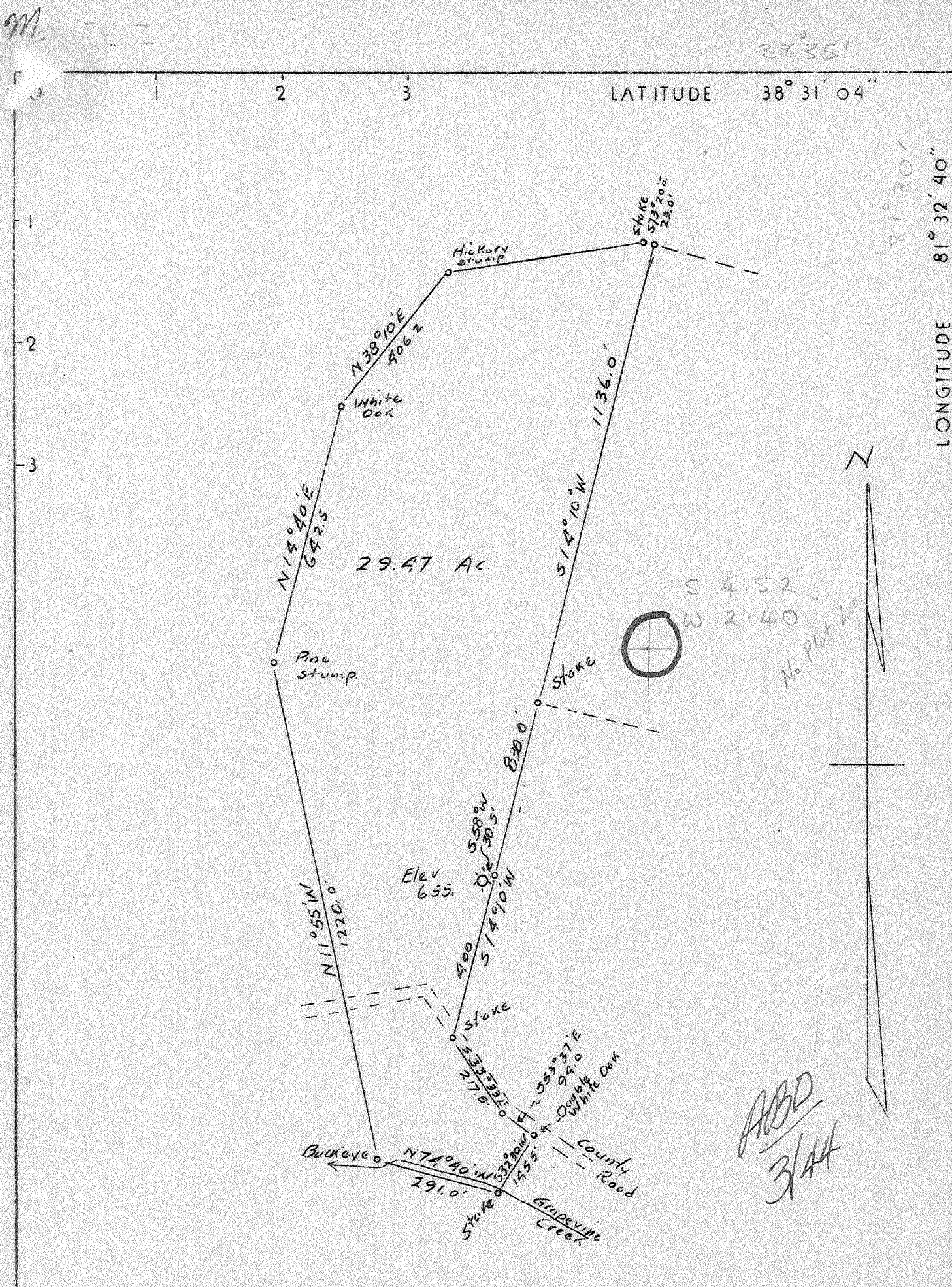
County Kenawha

District Poca

WELL LOCATION MAP

File No. Ken 382

CLD



Company - Hays Oil & Gas Co.  
 Address Clendenin, W. Va.  
 Farm E. C. Humphreys  
 Tract Acres 29.47 Lease No.  
 Well (Farm) No. 1 Serial No.  
 Quadrangle Kenna - S.E.  
 County Kanawha  
 District Pocahontas  
 Engineer A. E. Price  
 Engineer's Registration No. 819  
 File No. Drawing No.  
 Date 1-4-37 Scale 1" = 300'

STATE OF WEST VIRGINIA  
 Department of Mines  
 OIL AND GAS DIVISION  
 Charleston

WELL LOCATION MAP  
 File No. KAN-322

+ Denotes location of well on U. S. Topographic Maps, scale 1 to 62,500 latitude and longitude lines being represented by border lines as shown.  
 - Denotes one inch spaces on border line of original tracing.

