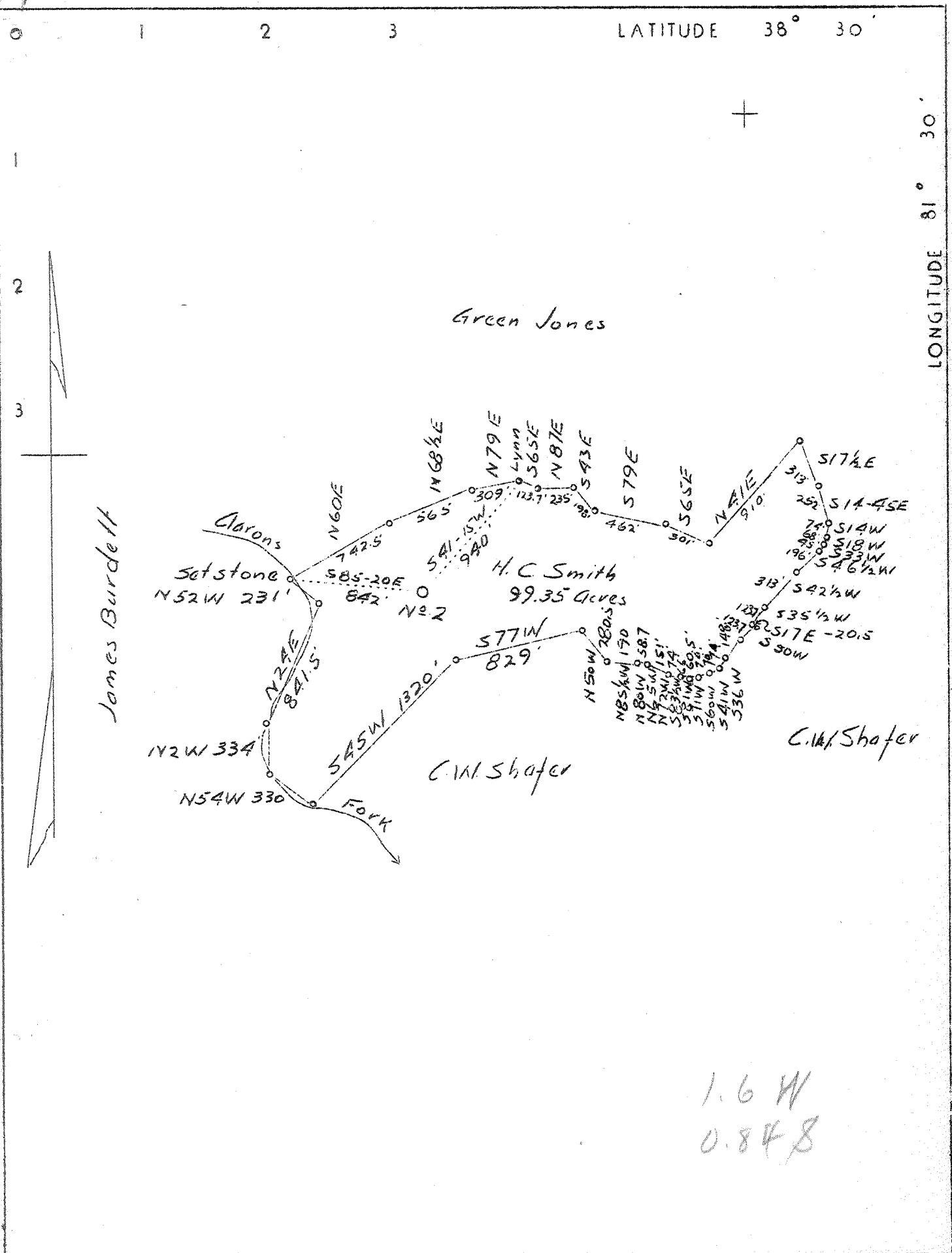


217



1.6 W  
0.848

Company	United Carbon Co.
Address	Charleston, W. Va.
Farm	H. C. Smith
Tract	Acres 99.35 Lease No. 2084
Well (Farm) No.	2 Serial No. 693
Elevation (Spirit Level)	881.2
Quadrangle	Charleston (2E)
County	Kanawha District Elk
Engineer	C. B. Wilson
Engineer's Registration No.	494
File No.	Drawing No.
Date	2-1-37 Scale 1" 800'

STATE OF WEST VIRGINIA  
 Department of Mines  
 OIL AND GAS DIVISION  
 Charleston

WELL LOCATION MAP  
 File No. KAN-327

+ Denotes location of well on U. S. Topographic Maps, scale 1 to 62,500 latitude and longitude lines being represented by border lines as shown.

- Denotes one inch spaces on border line of original tracing.

6-6-192

WEST VIRGINIA DEPARTMENT OF MINES

OIL AND GAS DIVISION

WELL RECORD

Permit No. Kan-327

Gas Well

Charleston Quad.

CASING & TUBING

Company	United Carbon Co.	13 Conductor	16	16
Address	901 Union Bldg., Charleston, W.Va.	10	419	419
Farm	H.C. Smith Acres 99.35	8 1/4	1771	1771
Location	Aarron's Fork, Little Sandy	6 5/8	4940	4940
Well No.	693 Elev. 876'	2		5052
District	Elk County Kanawha			
Surface	H.C. Smith, Elkview, W.Va.			
Mineral	Same			
Drilling	Commenced Mar. 12, 1937			
	Completed June 30, 1937			
Date Shot	Not shot			
Volume	3,800,000 Cu. Ft.			
Rock Press.	1255# 24 hrs.			
				Casing cemented 6 5/8" casing; 430'; 6/7/37.
				8 1/4" casing; 319.5'; 4/27/37.

Formation Color					Hor	Top	Base	Result	Formation Color					
Clay	Yellow	S	0	20					Oriskany			5039	5070	Gas
Rock	Red	S	20	85					Lime			5070	5073	5060-
Sand		S	85	115					TOTAL DEPTH				5073	67
Slate		S	115	135										Big Pay
Lime	Blue	H	135	160										
Slate&Shells		S	160	385										
Sand	Gray	H	385	420										
Slate	White	S	420	450										
Sand	Gray	H	450	497										
Slate	Black	S	497	512										
Slate	White	S	512	615										
Lime	Black	H	615	650										
Sand	Gray	H	650	700										
Slate	Shells		700	765										
Lime	White	H	765	780										
Sand	White	H	780	830										
Slate	Blue		830	850										
Sand	White	H	850	880										
Slate	White	S	880	885										
Slate	Shells		885	970										
Sand	White		970	993										
Slate	Blue		993	1002										
Salt Sand			1002	1025			Show							
Slate	White	S	1025	1037			Gas							
Salt Sand			1037	1487			1120							
Slate	White	S	1487	1490			Water							
Lime	Black	H	1490	1515			1095-							
Slate	White	S	1515	1520			3 bailer							
Little Lime			1520	1565			pr.hr.							
Slate			1565	1570										
Big Lime			1570	1745										
In jun Sand			1745	1750										
Slate, shells			1750	1785										
Lime	Blue		1785	1855										
Slate, shells	White		1855	2025										
Lime	Gray		2025	2040										
Slate, shells			2040	2660										
Shale	Gray		2660	3200										
Shale, shells			3200	3390										
Shale	Brown		3390	3425										
Shale, shells	Grey		3425	3850										
Shale	Brown		3850	3940										
Shale	Gray		3940	4540										
Shale	Brown		4540	4800										
Shale	Gray		4800	4860										
Shale	Black		4860	4917										
Corniferous			4917	5039										

NOTE: There is left in this well one joint 2" perforation-8' long. One joint tubing 30' long and one piece of joint 17' long.

The above was lost in well at the first attempt to tube.