

$\frac{3615 \cdot 7.5}{38^\circ 20'} = 2.085$
 $\frac{15'}{81^\circ 30'} = .810$
 Ack

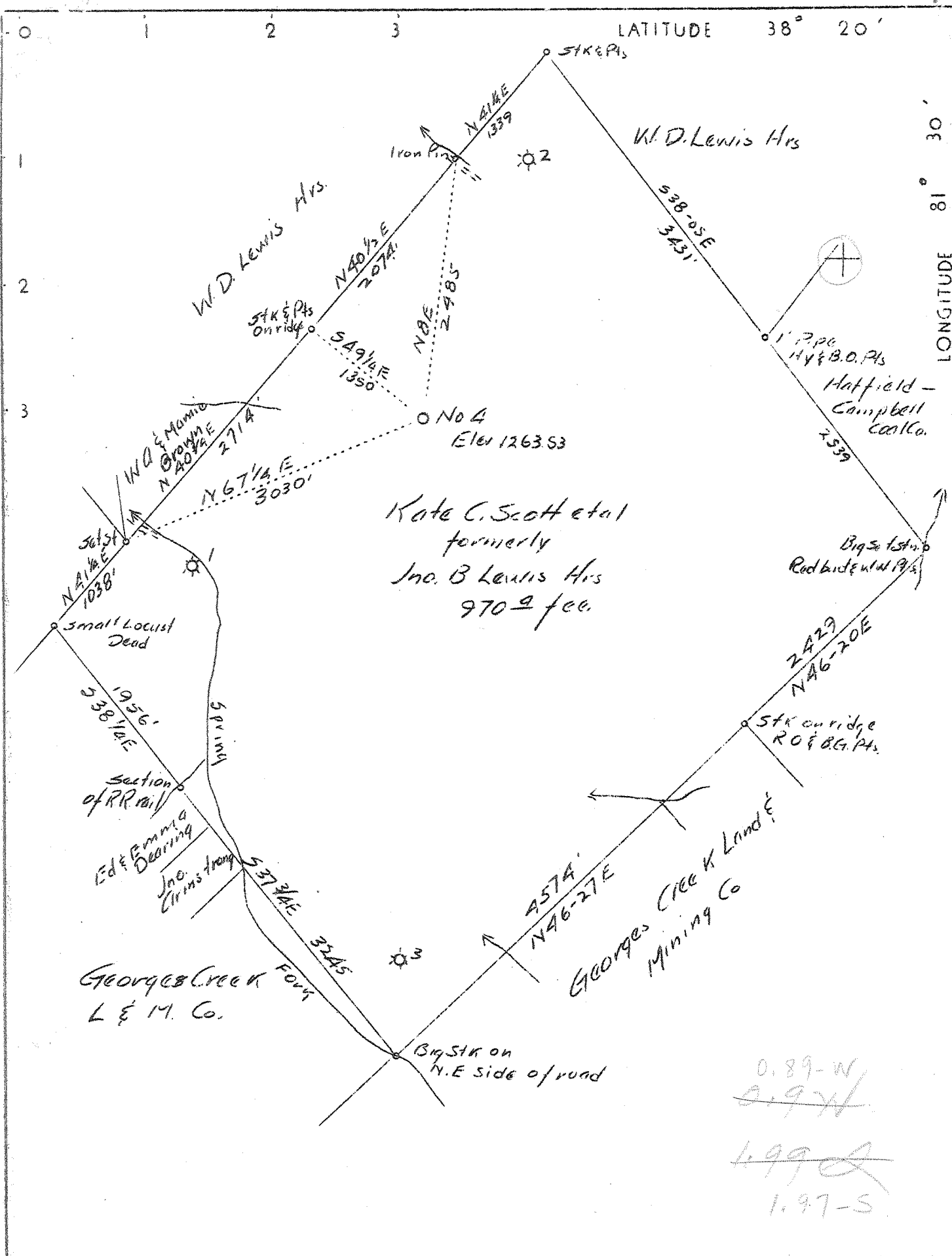
Fracture.....
FRACTURE — 4-18-69

Company	Pennzoil United, Inc. South Penn Oil Co.	
Address	P.O. Box 1588 Parkersburg, West Va. 4th - 7th Ave. Pittsburgh Pa.	
Farm	Kate C. Scott	
Tract	Acres 970	Lease No. 79261
Well (Farm) No.	4	Serial No. -
Quadrangle	Charleston 15/ Charleston East 23	
County	Kanawha	SE ELEV-1263.53
District	Malden	
Engineer	E. C. Tabler	
Engineer's Registration No.	-	
File No.	-	Drawing No. -
Date	Feb 18 1937 Scale 1 in = 1200'	

STATE OF WEST VIRGINIA
 DEPARTMENT OF MINES
 OIL AND GAS DIVISION
 CHARLESTON

WELL LOCATION MAP
 FILE NO. KAN-335-FRAC-W

+ Denotes location of well on United States Topographic Maps, scale 1 to 62,500, latitude and longitude lines being represented by border lines as shown.
 - Denotes one inch spaces on border line of original tracing.



Company South Penn Oil Co.
 Address 411 7th Ave. Pittsburgh, Pa.
 Farm Kate C. Scott
 Tract Acres 970 Lease# 79261
 Well(Farm) No. 4 Serial No. _____
 Quadrangle Charleston
 County Kanawha
 District Malden
 Engineer E. C. Tabler
 Engineer's Registration No. _____
 File No. _____ Drawing No. _____
 Date 2-18-37 Scale 1" - 1200'

STATE OF WEST VIRGINIA
 Department of Mines
 OIL AND GAS DIVISION
 Charleston

WELL LOCATION MAP
 File No. KAN-335

+ Denotes location of well on U. S. Topographic Maps, scale 1 to 62,500 latitude and longitude lines being represented by border lines as shown
 - Denotes one inch spaces on border line of original tracing.

Deep Well

WEST VIRGINIA DEPARTMENT OF MINES

OIL AND GAS DIVISION

WELL RECORD

Permit No. Kan-335.

Gas Well

Charleston Quad.


Company South Penn Oil Co.
 Address 411 Seventh Ave., Pittsburgh, Pa.
 Farm Kate C. Scott Acres 970
 Location Campbells Creek
 Well No. 4 Elev. 1263.53
 District Malden County Kanawha
 Surface Kate C. Scott et al
 Address c/o Central Trust Co., Charleston, W.Va.
 Mineral Same
 Drilling Commenced April 29, 1937
 Completed Aug. 30, 1937
 Date Shot Aug. 30, 1937 Depth 5171-78
 Volume 1,247,400 B.S.; 2,088,000 A.S. Cu.Ft.
 Rock Press. 750 # 188 hrs.

CASING & TUBING
 Cond. 16'
 10 632'5" Pulled
 8 1/4 (New) 1684
 7" 5135

PACKER -None

Steel Shoe 8 1/4" set at 1679'.
 Steel Csg. shoe, 7" set at 5096'.

Formation	Color	Hor 3	Top	Base	Result	Formation	Color	Hor 3	Top	Base	Result
Sand				90		Shale - AA1	Brown		2857	2933	Gas
Slate			90	120		Slate&Shells			2933	3440	1831-
Sand			120	140		Shale	Brown		3440	3525	1832,
Coal			140	141	Water	Slate&Shells			3525	3775	6/10W
Slate			141	160	160'	Shale	Brown		3775	4073	2"Ope.
Sand			160	210	3 Blr.	Slate&Shells			4073	4130	115,963
Slate			210	250	pr. hr.	Slate	White		4130	4270	Cu.Ft.
Sand			250	320		Shale	Brown		4270	4320	
Slate			320	340		Slate & Shells			4320	4560	
Sand			340	390		Slate	Dark		4560	4981	Gas
Slate			390	410		Shale	Grey		4981	5040	5171
Sand			410	475		Lime Shell			5040	5044	12/10
Slate			475	510		Slate - Macerellus	Black		5044	5075	W.2"
Sand			510	566		Corniferous			5075	5170	Op.
Lime			566	610		Oriskany			5170	5183	168,960
Sand			610	665		Lime	White		5183	5187	Cu.Ft.
Slate			665	672		TOTAL DEPTH			5187		
Sand			672	703							Gas
Slate			703	725							5171-
Lime			725	753							5175 1/2
Slate&Shell			753	770							14/10
Sand			770	925		5075 570 5183					M.3"
Slate & Shell			925	963		1264 1264 1264					Op.
Grampus Sand			963	1010		3811 3906 3919					1,532,520
Slate			1010	1013							Cu.Ft.
Salt Sand			1013	1340	Water						Gas
Slate			1340	1365	1290						5175 1/2
Lime (Gritty)			1365	1490	Hole						5180
Slate			1490	1493	Full						12/10
Lime			1493	1503							M.3"
Slate			1503	1506							Op.
Red Rock			1506	1510							1,247,4
Lime			1510	1545							Cu.ft.
Slate			1545	1547							
Maxon			1547	1593							
Little Lime			1593	1630							
Slate			1630	1632							
Lime ?	Black		1632	1638							
Slate			1638	1642							
Lime			1642	1666							
Pencil Cave			1666	1670							
Big Lime			1670	1830	Gas						
Big Injun			1830	1890	1714-16						
Slate& Shells			1890	2248	6/10W.						
Shale	Brown		2248	2260	in 1"						
Borea			2260	2263	Ope.						
Slate&Shells			2263	2857	28,992	Cu.Ft.					

 PENNZOIL, UNITED, Inc.

601 GRAND CENTRAL AVE. • VIENNA, W. VA. 26101 • PHONE 304 422-6565

Mailing Address: P. O. Drawer 1588, Parkersburg, West Virginia 26101

June 5, 1969

Mr. Robert L. Dodd, Deputy Director
Oil and Gas Division
Department of Mines
2000 Quarrier Street
Charleston, West Virginia

Dear Sir:

FRACTURE RECORD

Well Name and No: Kate Scott No. 4

District: Malden

County: Kanawha

Permit No: KAN-335 *W* Frac.

Completion Date: May 5, 1969

Formation fractured: Top - 1835'
Bottom - ~~1835'~~

Material - Sand: 30,000#
Fluid: 764 bbls.

Rock Pressure:

Before fracture - 140#
After fracture - 265#

Test after Fracture:

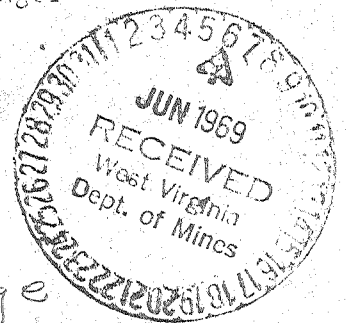
Oil - ---
Gas - 150 MCF

Very truly yours,

PENNZOIL, UNITED, INC.

By Dennis Wise
Dennis Wise
District Production Manager

Copy to: A. C. Hilbert



OWWO - no new footage
drld.

JUN 15 1969