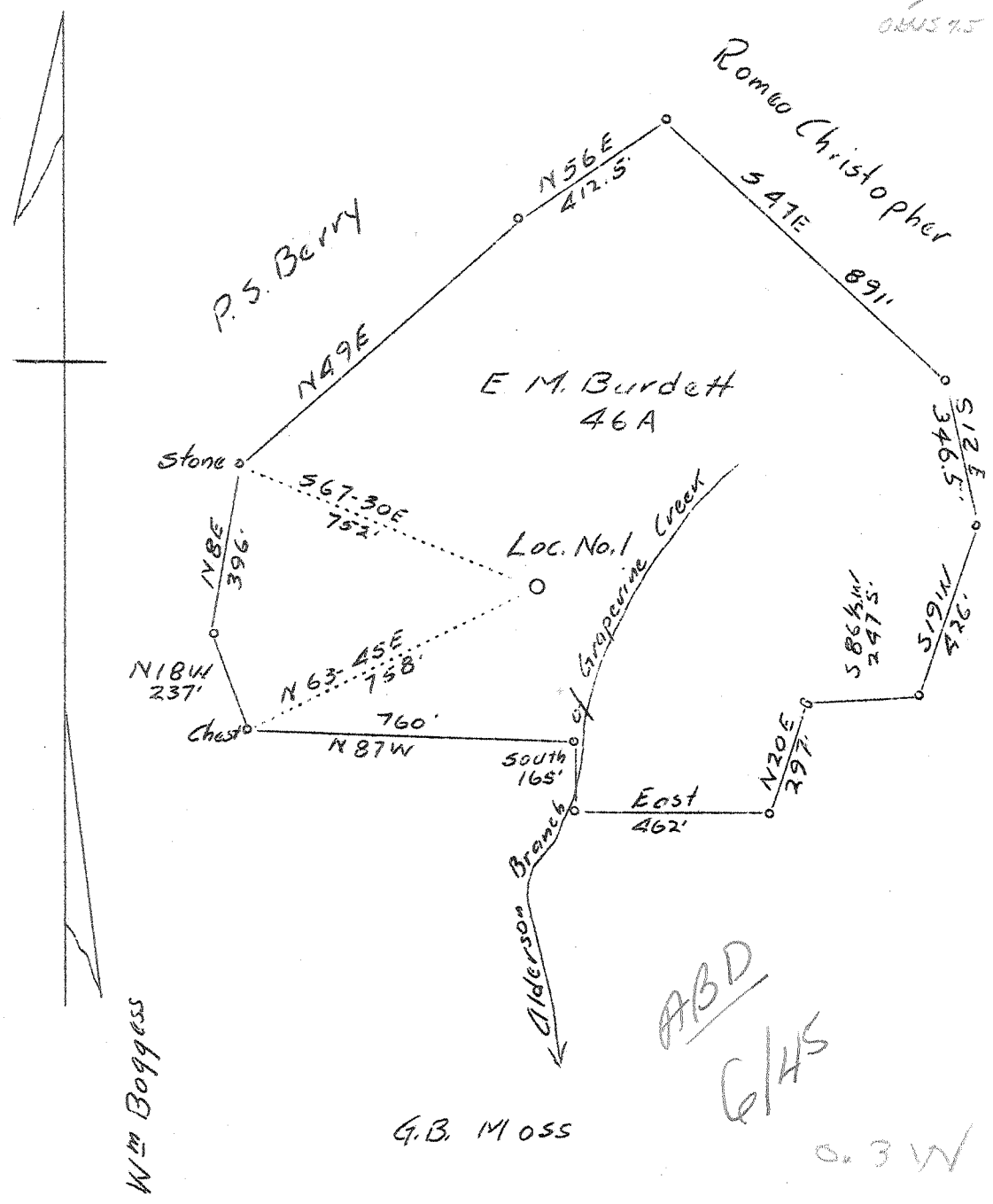


0 1 2 3 LATITUDE 38° 35'

LONGITUDE 81° 35'

$\frac{0.115 \times 7.5' \text{ loc } 15'}{38^\circ 32' 30'' \cdot 605 \quad 3.475}$
 $\frac{81^\circ 35' \cdot 390}{\cdot 390} \quad 0.390$
ack



Wm Boggess

G.B. MOSS

W. R. MOSS

ABD
G/H/S

0.3 W
3.79

seems to hit former loc. exactly
Revised Location

Company	United Carbon Co.
Address	Charleston, W. Va.
Farm	E. M. Burdett et al
Tract	Acres 81 Lease No. 2500
Well(Farm) No.	1 Serial No. 695
Elevation(Spirit Level)	850.7
Quadrangle	Kenna <u>50</u>
County	Kanawha District Poc a
Engineer	C. B. Wilson
Engineer's Registration No.	494
File No.	Drawing No.
Date	March 8, 1937 Scale 1" - 400'

STATE OF WEST VIRGINIA
 Department of Mines
 OIL AND GAS DIVISION
 Charleston

WELL LOCATION MAP
 File No. KAN-339 Per

+ Denotes location of well on U. S. Topographic Maps, scale 1 to 62,500, latitude and longitude lines being represented by border lines as shown.

- Denotes one inch spaces on border line of original tracing.

6-6-1932

WEST VIRGINIA DEPARTMENT OF MINES

OIL AND GAS DIVISION

W E L L R E C O R D

Permit No. Kan-339R

Gas Well

Kenna Quad.

CASING & TUBING

Company	United Carbon Co.	13	Wood Conductor	15
Address	901 Union Bldg., Charleston, W.Va.	10	545	545
Farm	E.M. Burdette Acres 81	8 $\frac{1}{2}$ "	1799	1799
Location	Alderson Br., Grapevine Creek.	6 5/8"	4873	4873
Well No.	695 1 Elev. 850.7'			
District	Poca County Kanawha			
Surface	E.M. Burdette, Legg, W.Va.			
Mineral	Same			
Drilling	Commenced April 5, 1937		Casing Cemented-354'	
	Completed July 15, 1937		in 8 $\frac{1}{2}$ " casing-5/20/37.	
Date Shot	Not shot		6 5/8" casing 430'-6/30/37.	
Volume	12,890,000 Cu.Ft.			
Rock Pressure	1785# 36 Hrs.			

Formation Color					Formation Color						
	Hor	S	TOP	Base	Result		Hor	S	TOP	Base	Result
Soil	Red	S	0	10							
Stone	yellow	S	10	20							
Sand	White	S	20	30							
Rock	Red	S	30	50							
Slate	White	S	50	100							
Rock	Red	S	100	160							
Slate	Black	S	160	200							
Rock	Red	S	200	300							
Slate	White	S	300	360							
Sand	White	S	360	390							
Slate	Black	S	390	418							
Sand	White	S	418	510							
Slate	White	S	510	540							
Sand	White	S	540	662							
Slate	White	S	662	670							
Sand	White	S	670	736							
Slate	Blue	H	736	790							
Sand	White	S	790	850							
Slate	Black	S	850	890							
Sand	White	H	890	964							
Slate	Black	S	964	1060							
Sand(Salt)	White	H	1060	1139							
Slate	Black	S	1139	1145							
Sand	White	H	1145	1556	Water						
Slate	White	S	1556	1560	1240-						
L.Lime	Black	H	1560	1595	hole full						
Pencil Cave	Black	S	1595	1600							
B.Lime	White	H	1600	1755	Gas-show						
Injun Sand	Blue	H	1755	1795	1695						
Slate	Black	S	1795	1840							
Lime	White	S	1840	1910							
Slate, Shells	Black	S	1910	2112							
Sand	White	H	2112	2120							
Slate, Shells	Brown	S	2120	3740							
Shale	White	H	3740	3770							
Slate, Shells			3770	3790							
Shale	Brown	S	3790	3980	Gas show						
Slate	White	S	3980	4540	3980						
Shale	Brown	S	4540	4780							
Slate	White	S	4780	4795							
Shale	Black	S	4795	4852	Gas						
Corniferous	Lime	H	4852	4963	4969-4981-						
Oriskany	Sand	H	4963	4983	Big Pay						
TOTAL DEPTH				4983							