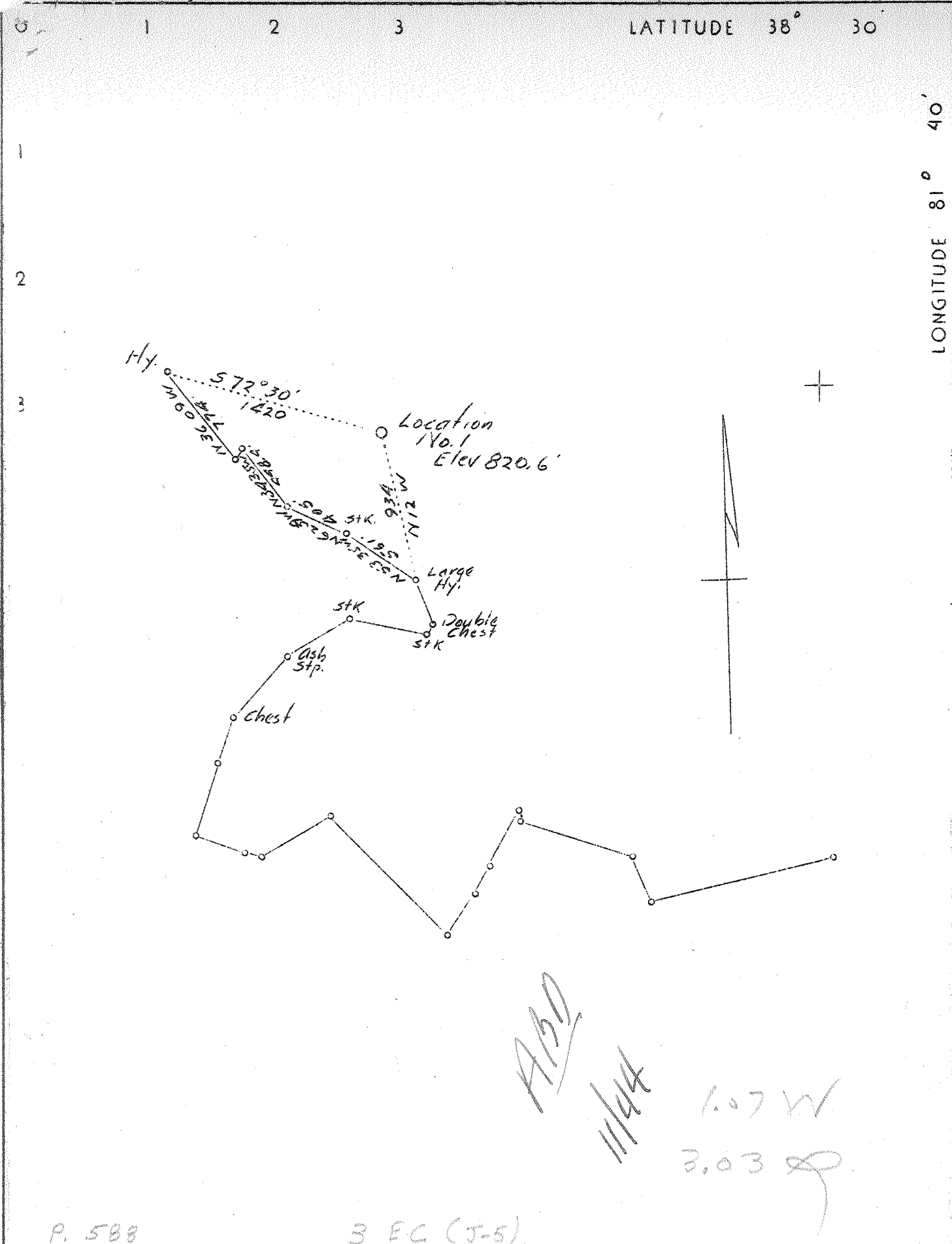


P



APD
11/44
1.07 W
3.03

P. 588 3 EC (J-5)

Company <u>Glenn Oil & Gas Co.</u>	STATE OF WEST VIRGINIA Department of Mines Oil & Gas Division CHARLESTON
Address <u>501 Chas. Nat'l Bk. Charleston</u>	
Farm <u>Virginia Joint Stock Land Bank</u>	WELL LOCATION MAP File No. <u>KAN-349</u>
Tract <u>Acres 203.9 Lease No.</u>	
Well(Farm)No. <u>One</u> Serial No.	+ Denotes location of well on U.S. Topographic Maps, scale 1 to 62,500, latitude and longitude lines being represented by border lines as shown.
Elevation(Spirit Level) <u>820.6</u> L.	
Quadrangle <u>Charleston - NW</u>	- Denotes one inch spaces on border line of original tracing.
County <u>Kanawha</u> District <u>Union</u>	
Engineer <u>E. G. Johnson</u>	<p>Deep Well</p>
Engineer's Registration No. <u>288</u>	
Date <u>3/18/37</u> Scale <u>1" = 800'</u>	

6-9-192

WEST VIRGINIA DEPARTMENT OF MINES

OIL & GAS DIVISION

W E L L R E C O R D

Permit No. Kan-349

Gas Well

Charleston Quad.

Company Glenn Oil & Gas Co.
 Assigned to Liosay Fuel Co.
 Address 511 Chas. Nat'l Bank Bldg.,
 Charleston, W. Va.
 Farm Virginian Joint Stock Lank Bk.
 Acres 203
 Location Rocky Fork
 Well No. 1 Elev. 820.6
 District Union - County Kanawha
 Sur. & Min. Vgn. Joint Stock Land Bk.
 Drilling Commenced Apr. 2, 1937
 Completed July 10, 1937
 Date Shot 7-29-37 - Depth 4879-4905
 Open Flow 15/10ths Merc. in 2"
 R.P. 1700 lbs.
 F.Water 1137-1155-1170 Hole full

CASING

Casing cemented 7" O.D.
 Size 10' No. Ft. 7/10/37 Date.
 Little gas @ 2195'
 Small show oil @ 2220'
 Gas 4883-4884 - 30/10 W. 2"
 " 4884-4886 1/2 10/10 M. 2"
 Blew down to 17/10 W. 2"
 4889 - 50/10 W. 2"
 Gas 4890 1/2 - 44/10 W. 2"
 Gas 4893 1/2 - 38/10 W. 2"
 Gas 4895 - 30/10 W. 2"
 Gas 4896 - 36/10 W. 2"
 Gas 4898 - 40/10 W. 2"
 Gas 4907 - 25/10 W. 2"
 Show gas @ 3935' - open flow
 when tubes 15/10 M. 2"

152

Formation Color ^{Hor} Top Base Result					Formation Color ^{Hor} Top Base Result				
Soil			0	18	Maxon Sand			1525	1608
Rock	Red		18	90	Slate			1608	1610
Sand			90	110	Little Lime			1610	1622
Rock	Red		110	120	Slate			1622	1625
Lime			120	140	Big Lime			1625	1800
Slate			140	155	Big Injun			1800	1840
Shell			155	175	Little Slate			1840	1843
Slate			175	190	Gas at Lime			1843	1870
Lime			190	220	160'			1870	1900
Sand			220	235	Slate & Shell			1900	1975
Slate			235	250	Shell			1975	1990
Rock	Pink		250	265	Slate & Shell			1990	2168
Slate			265	305	Slate & Shell			2168	2263
Sand			305	353	Shell	H		2263	2273
Slate			353	365	Slate & Shells			2273	2305
Sand			365	380	Lime			2305	2315
Slate			380	390	Slate & Shells			2315	3275
Lime	Gray		390	405	Lime			3275	3480
Sand	Gray		405	425	Shale			3480	3510
Slate	White		425	445	Lime			3510	3675
Lime			445	475	Slate & Shells			3675	3780
Slate			475	510	Shale	Brown		3780	3800
Sand	White		510	535	Slate			3800	3810
Slate	Gray		535	540	Lime			3810	3845
Lime	Yel.		540	555	Shale	Brown		3845	3900
Sand			555	570	Lime			3900	3925
Slate			570	575	Shale	Brown		3925	3990
Sand			575	635	Shale	Brown		3995	4060
Slate			635	640	Slate & Shells white			4060	4205
Sand			640	720	Lime			4205	4295
Slate			720	750	Slate			4295	4445
Sand			750	830	Lime			4445	4475
Slate			830	890	Slate & Shells			4475	4500
Lime			890	923	Shale	Brown		4500	4700
Slate			923	945	Slate & Shells White			4700	4720
Lime			945	960	Shale	Black		4720	4779
Slate			960	965	Corniferous Lime			4779	4874
Lime			965	977	Oriskany Sand			4874	4903
Slate			977	1010	Lime			4903	4908
Sand			1010	1045					
Slate			1045	1055	Total Depth S. L.				
Sand			1055	1080					
Slate			1080	1090	Water 1137' - enough to drill				
Salt Sand			1090	1407	" 1155' - 3 blrs. per hour				
Slate			1407	1420	" 1170 - hole full				
Lime			1420	1470					
Slate			1470	1472					
Sand			1472	1517					
Slate			1517	1525					

Copy Me