

P

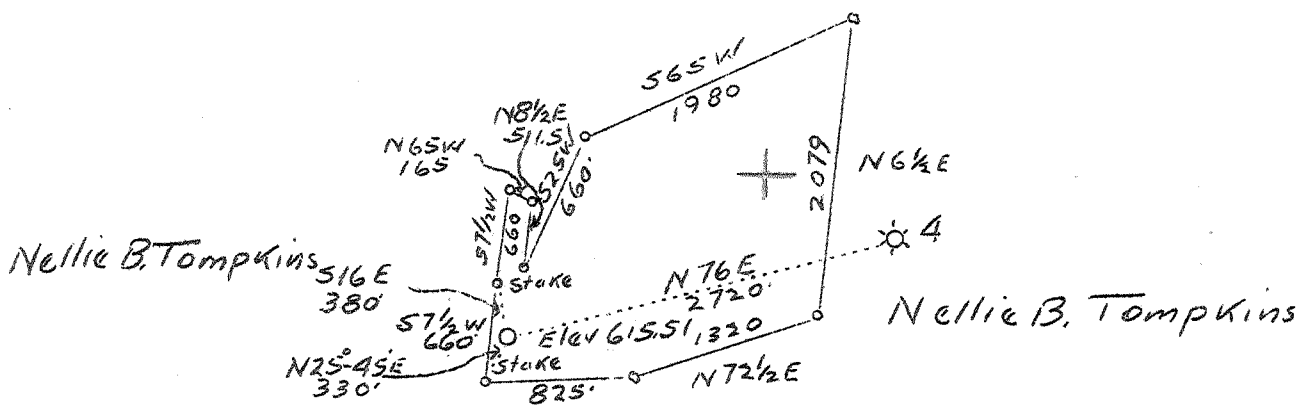
0 1 2 3 LATITUDE 38° 20'

1 LONGITUDE 81° 30'

2

3

O. P. Smith



L. L. Williams

4.38 S.
3.50 W.

7 SW (J.S)

Vol. IV, p. 370

Company	Godfrey L. Cabot, Inc.
Address	600 Union Bldg., Charleston, W. Va.
Farm	Nellie B. Tompkins
Tract	1 Acres 78 Lease No.
Well(Farm) No.	6 Serial No. 900
Quadrangle	Charleston <u>SE</u>
County	Kanawha
District	Malden
Engineer	O. L. Fitz Randolph
Engineer's Registration No.	806
File No.	Drawing No.
Date	3-9-37 Scale 1" = 1320'

STATE OF WEST VIRGINIA
 Department of Mines
 OIL AND GAS DIVISION
 Charleston

WELL LOCATION MAP

File No. 1KAN-350

+ Denotes location of well on U. S. Topographic Maps, scale 1 to 62,500 latitude and longitude lines being represented by border lines as shown.

- Denotes one inch spaces on border line of original tracing.

6-0 214 Deep Well

1/4 350

GODFREY L. CABOT, INC.

Box 348

Charleston, W. Va.

Lie B. Tompkins #6, Serial #900
Malden District, Kanawha County

	Size	Casing & Tubing		Initial Open Flow
		Used in Drilling	Left in Well	
Drilling commenced May 6, 1937				2/10 W.-1" - 16,848
Drilling completed Aug. 23, 1937	14" O. D.	37'	37'	
	10-3/4"	162	162	Shot 8/24/37 - 20 Qts.
	8-5/8"	1121	1121	
	7"	1593	1593	O. F. after shot:
	5-1/2"	4354	4354	9/10 Hg. 2" - 527 M.
	1-1/4"	4453	4453	R. P. - 995# 24 hrs.
Elevation - 615.51				Tubed and shut in 9/1/37.

Surface	0	3			5-1/2" O. D. Casing cemented
Slate	3	35			in, by Halliburton Cementing
Sand	35	80			Co.
Slate	80	84			
Coal	84	87 ✓			
Sand	87	150			
Slate	150	200			
Sand ✓	200	375	Water	210'	Hole full
Slate	375	410			
Sand ✓	410	610			
Slate	610	625			Driskany Sand Gas Shot with
Sand ✓	625	820			20 qts. Glycerin from 4437'
Slate	820	825			to 4445'.
Maxton Sand ✓	825	910			Gauge before shot, 2/10 Water
Little Lime ✓	910	946			in 1". 45 min. after shot
Slate	946	953			11/10 Hg. in 2". When clean-
Black Lime Shells	953	960			ing out completed, gauged
Pencil Cave ✓	960	964			9/10 Hg. in 2".
Big Lime ✓	964	1142	Show of Gas	976'	
Injun Sand ✓	1142	1177	" " "	1133	
Lime Shells	1177	1592			
Brown Shale ✓	1592	1596			
Berea Shells ✓	1596	1606			
Slate & Shells	1606	2660			
Brown Shale	2660	2670			
Slate & Shells	2670	3050			
Brown Shale	3050	3100			
Slate & Shells	3100	3250			
Brown Shale	3250	3300			
Lime	3300	3345			
Brown Shale	3345	3470			
White Slate	3470	3500			
Slate & lime	3500	3940			
Brown Shale	3940	4100			
Slate	4100	4140			
Brown Shale	4140	4334			
Corniferous Lime ✓	4334	4436			
Criskany Sand ✓	4436	4443	Gas	4438	2/10 Water in 1"
Helderberg Lime	4443	4455			
Total Depth		4455			

4334 4436 4443
 616 616 616

 3718 3820 3827