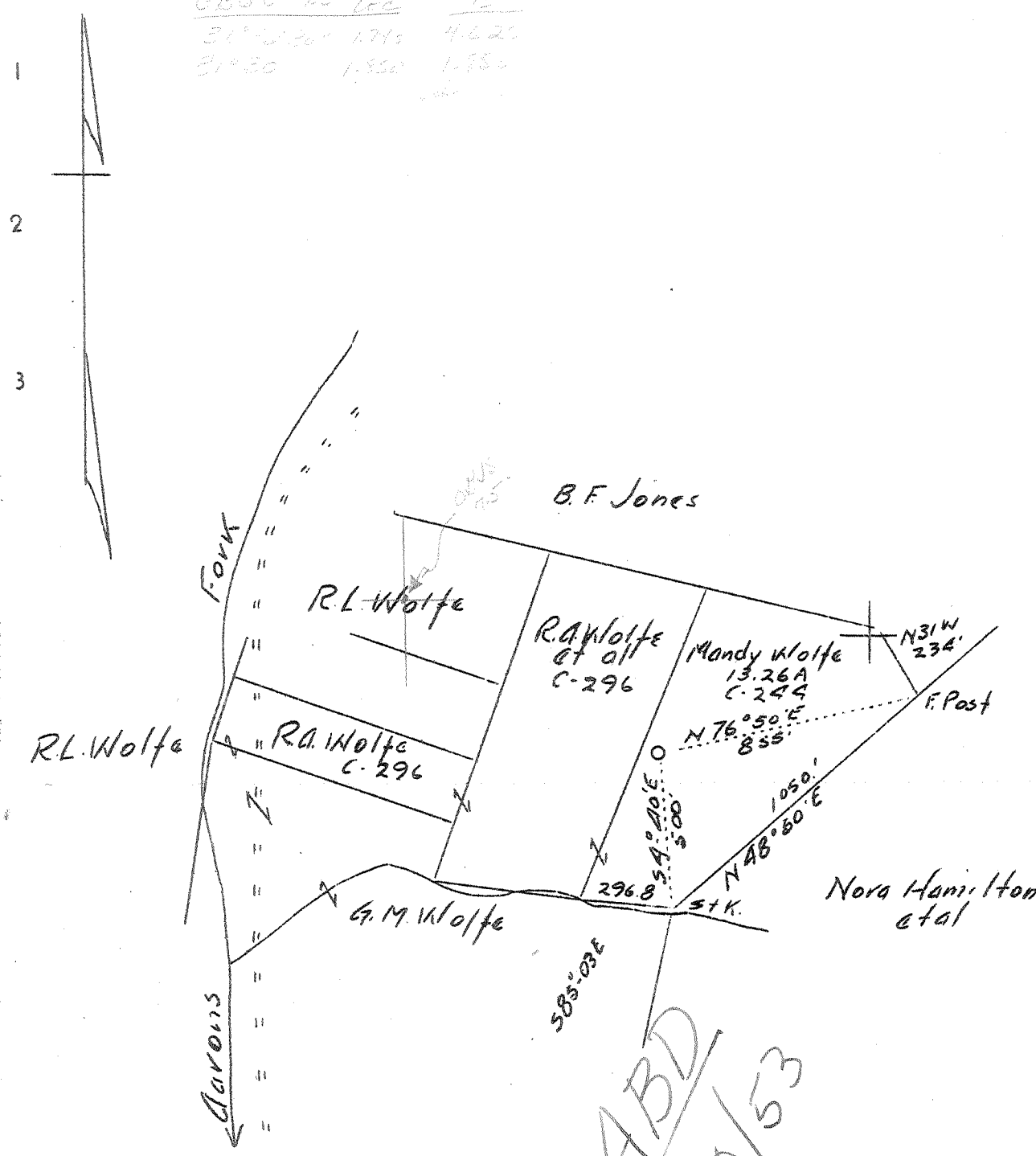


OBS 75' loc
 31° 50' 1.745 4.625
 31° 50' 1.850 1.850



ABD
10/53

1.87
 1.9 W
 7.8
 4.83

Company	Columbian Carbon Co.
Address	Box 1240, Charleston, W. Va.
Farm	Mandy Wolfe
Tract	Acres 13.25 Lease No. C-244
Well(Farm) No.	1 Serial No.
Elevation(Spirit Level)	909.0
Quadrangle	Kenna - S. E.
County	Kanawha District Elk
Engineer	James N. Sell
Engineer's Registration No.	772
File No.	Drawing No.
Date	3-18-37 Scale 1" - 500'

STATE OF WEST VIRGINIA
 Department of Mines
 OIL AND Gas DIVISION
 Charleston
 WELL LOCATION MAP
 File No. KAN-351D
 + Denotes location of well on U. S. Topographic Maps, scale 1 to 62,500 latitude and longitude lines being represented by border lines as shown.
 — Denotes one inch spaces on border line of original tracing.

DEEP WELL

WEST VIRGINIA DEPARTMENT OF MINES

OIL AND GAS DIVISION

WELL RECORD

Permit No. Kan-351

Gas Well

Konna Quad.

FINAL

CASING & TUBING

Company	Columbian Carbon Co.	14" O.D. 42'6"	42'5"
Address	Box 1240, Charleston, W.Va.	10 1/4" O.D. 401'10"	Pulled
Farm	Mandy Wolfe Acres 13.26	8-5/8" O.D. 1712'	1712'
Location	Aarons Fork	6-5/8" O.D. 5050'7"	5050'7"
Well No.	1 (K7-383)	Elev. 970.4	
District	Elk	County Kanawha	Not tubed.
Surface	Mandy Wolfe, Big Chimney, W.Va.		
Coal	Alex J. Bruen Heirs, 19 E. 83rd St.		See Cement Record below.
Address	New York City		
Drilling	Commenced April 25, 1937		
	Completed Aug. 10, 1937		
Volume	8,684,000 Cu.Ft.		
Rock Press.	1650# 15 hrs.		

Formation Color		Top	Base	Result	Formation Color		Top	Base	Result
Sand		0	8		Slate	Brown	4770	4925	
Soapstone		8	13		Slate	White	4925	4955	
Mountain Sand		13	55		Shale		4955	4982	
Red Rock		55	85		Shale	Black	4982	5011	
Slate	Gray	85	90		Corniferous		5011	5132	
Red Rock		90	200		Oriskany		5132	5155	
Slate		200	225		TOTAL	(75)		5155	
Sand & Lime		225	257		Cement Record: 5-25-37 1699' in 8-5/8" casing. Used 65 sacks Incor Cement, 4 sacks aquagel 10' of cement left in pipe. Pipe froze 1' off bottom.				
Slate & Lime		257	390		7-27-37 5024' in 6 5/8" casing. Used 25 sacks Incor cement. 12' cement left in pipe.				
Sand		390	430		Halliburton Oil Well Cementing Co.				
Slate & Lime		430	450						
Pink Rock		450	456						
Sand		456	496						
Slate Lime Shell		496	595						
Sand		595	662						
Slate		662	720						
Sand		720	755						
Slate Shells		755	790						
Sand		790	875	Water					
Slate		875	1080	865- small amount					
Lime & Sand		1080	1101						
Salt Sand	185	1101	1157						
Slate		1157	1180						
Sand		1180	1212						
Slate		1212	1214						
Sand		1214	1281	Oil-Sm.					
Top Water Sand		1281	1296	sh. 1216'					
Sand		1296	1480	Water					
Slate		1480	1500	1281-96					
Sand		1500	1595	Gas					
Slate		1595	1600	1340- enough to					
Sand	235	1600	1633	blow water out.					
Slate		1633	1638						
Little Lime	331	1638	1662						
Pencil Cave	334	1662	1668						
Big Lime	345	1668	1843						
Big Injun	375	1843	1856	Oil-Sm.					
Slate Gritty Lime		1856	2480	sh. 1850					
Slate Shells		2480	3450						
Slate Shells	Brown	3450	3550						
Slate		3550	3775						
Slate	Brown	3775	3944						
Shale	Brown	3944	4000						
Slate	Brown	4000	4180						
Slate	White	4180	4700						
Slate	Brown	4700	4745						
Shale	Brown	4745	4770						

WEST VIRGINIA DEPARTMENT OF MINES

OIL & GAS DIVISION

WELL RECORD

Permit No. Kan-^{351-D}351-D

Gas Well

Kanawha Quad.

CASING & TUBING

Company Columbian Carbon Co. 2-3/4" 20 FT-5" 22 1/2-5"
 Address Box 1240, Charleston, W. Va.
 Farm Mandy Wolfe ACRES 13.26
 Location Aarons Fork
 Well No. 1 (GW-383) ELEV. 970.4
 District Elk - Kanawha County
 Surface Mandy Wolfe, Big Chimney, W. Va.
 Coal Alex J. Bruce Mrs., New York
 Mineral -
 Drilling Deeper:
 Commenced 8/12/39
 Completed 9/24/39
 Volume 2,844,000 c.f.
 Rock Pressure 920 lbs. 16 hrs.

Formation Color ^{1/3} Top Base Result Formation Color ^{1/4} Top Base Result

Oriskany
 Old Total Depth -
 Oriskany Sand

5132
 5155

DEPLETED RECORD

Oriskany
 Limb ^{400'}
 New Total Depth

5155 5208
 5208 5208
 5209

No completed way