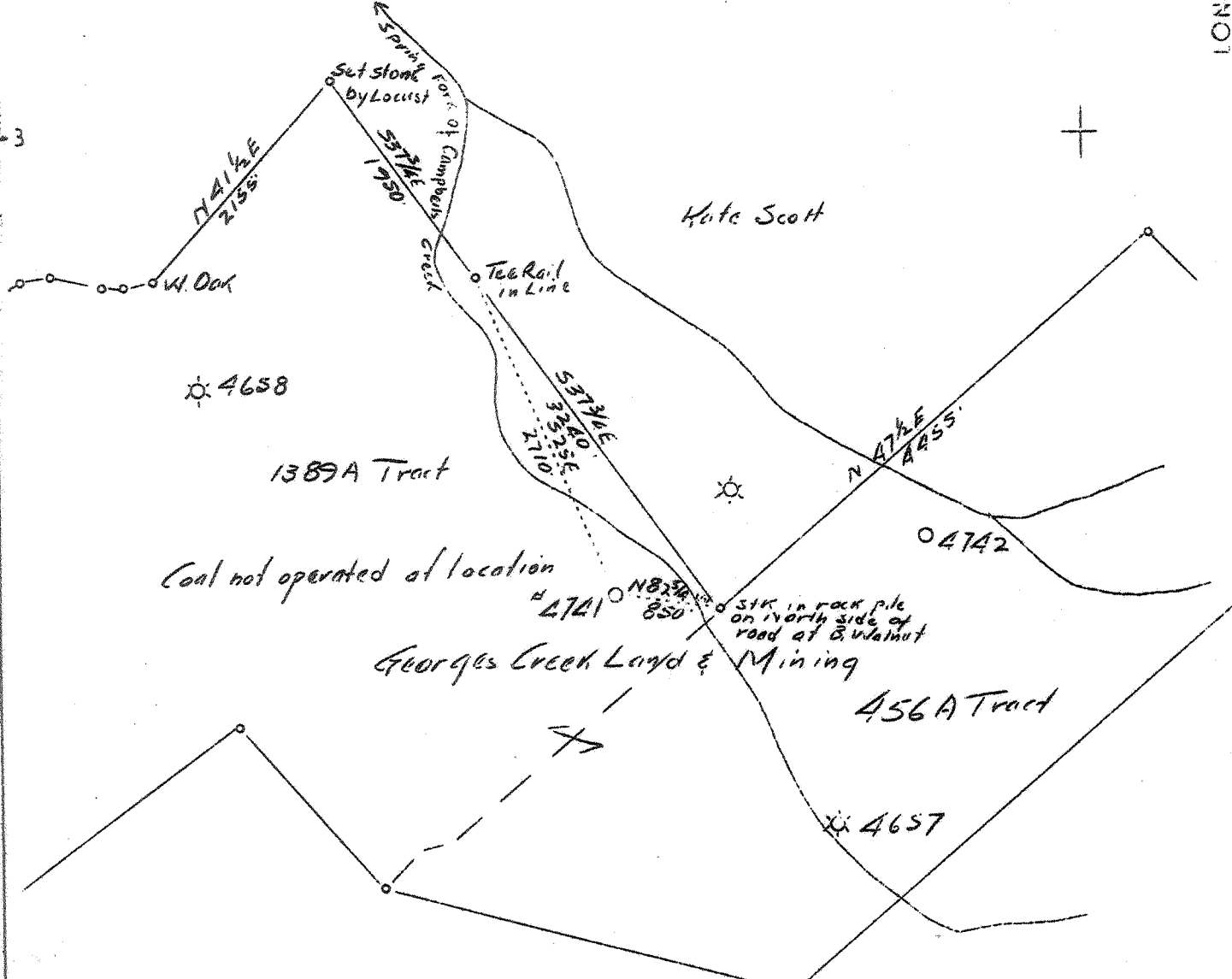


LATITUDE 38° 20' LONGITUDE 81° 30'



OBIS 75' loc 15'
 38°17'30" .415 3.295
 81°30' .960 .900

United Fuel Gas Co, Fee

0.98 W
 3.2 R
 7 EC (FS)

Vol. XVI p. 360, 32' W.

Company	United Fuel Gas Co.		
Address	Charleston, West Va.		
Farm	Georges Creek Land & Mining Co.		
Tract	Acres	2663	Lease No.
Well(Farm) No.	B	Serial No.	4741
Elevation (Spirit Level)	876.32		
Quadrangle	Charleston	SE	
County	Kanawha	District	Malden
Engineer	G. A. Cunningham		
Engineer's Registration No.	659		
File No.	68-55	Drawing No.	
Date	4-6-37	Scale	1" - 1320'

STATE OF WEST VIRGINIA
 Department of Mines
 OIL AND GAS DIVISION
 Charleston

WELL LOCATION MAP
 File No. KAN-358

+ Denotes location of well on U. S. Topographic Maps, scale 1 to 62,500 latitude and longitude lines being represented by border lines as shown.

— Denotes one inch spaces on border line of original tracing.

Samples 4-B (4627-4772)

Deep Well

WEST VIRGINIA DEPARTMENT OF MINES

OIL AND GAS DIVISION

WELL RECORD

Permit No. Kan-358

Gas Well

Charleston Quad.

CASING & TUBING

Company	United Fuel Gas Co.	14" O.D.	33'3" 23'3"
Address	Charleston, W.Va.	10 $\frac{3}{4}$ "	326'6" 318'4"
Farm	Georges Crk, L & M Co. Acres 2563	8 5/8	1421'3" 1416'3"
Location	Spring Fork of Campbells Creek	6 5/8	4699' 4694'
Well No.	4741 Elev. 876.3		
District	Malden County Kanawha		
Surface	Georges Crk. L & M, New York City		
Mineral	Same		
Drilling	Commenced April 28, 1937		
	Completed July 28, 1937		
Date Shot	7-28 & 30-1937	Depth 4742	
Volume	567,000 Cu.Ft.	A.S.	
Rock Press.	820# 24 hrs.		

Formation	Color	Hor	Top	Base	Result	Formation	Color	Hor	Top	Base	Result
Gravel			0	25		Slate	Black		4600	4643	
Slate			25	28		Corniferous Lime			4643	4742	
Coal			28	30		Oriskany Sand			4742	4759	
Slate			30	130		Sandy Lime	Weld.		4759	4772	
Sand			130	150	Water	TOTAL DEPTH				4772	
Coal			150	153	135						
Slate			153	190							
Sand			190	215							
Slate & Shells			215	240							
Sand			240	262							
Coal			262	265							
Slate			265	275							
Sand			275	425							
Slate & Shells			425	480							
Salt Sand			480	620	Gas						
Slt. Lime, Shells			620	630	Gas						
Sand			630	865	Gas						
Slate & Shells			865	890							
Sand			890	915	Water						
Slate & Shells			915	960	775 &						
Sand			960	1018	835						
Slate			1018	1025							
Red Rock			1025	1027							
Slate & Shells			1027	1070							
Red Rock			1070	1073							
Slate Lime Shell			1073	1085							
Red Rock			1085	1092							
Maxon Sand			1092	1155							
Little Lime			1155	1180							
Slate			1180	1190							
Lime Shell			1190	1205							
Slate & Lime			1205	1215							
Pencil Cave			1215	1220							
Big Lime			1220	1400							
Injun Sand			1400	1460							
Slate Shells			1460	1495							
Red Rock			1495	1505							
Slate & Shells			1505	3015							
Shale	Brown		3015	3100							
Slate & Shells	White		3100	3250							
Shale	Brown		3250	3600							
Slate & Shells			3600	3700							
Shale	Brown		3700	3735							
Slate	White		3735	4150							
Shale	Brown		4150	4485							
Slate	White		4485	4550							
Shale	Brown		4550	4600	Gas						

4643 4742
876 876
3767 3866