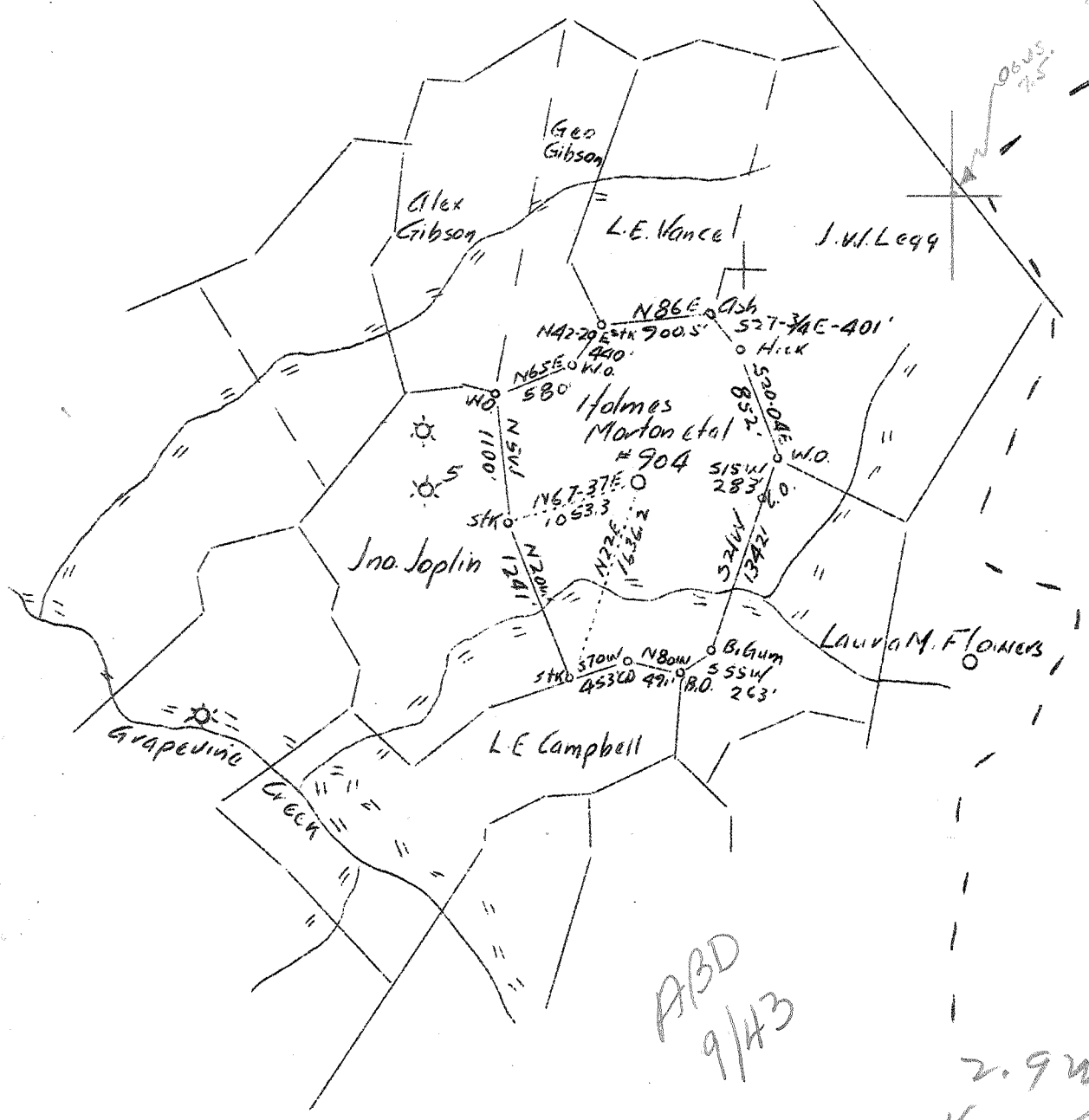


LATITUDE 38° 35'

LONGITUDE 81° 30'

AKS 75' loc 15'
38° 32' 30" 1.44s 4.30s
81° 32' 30" .63w 2.88w
ack



ABD
9/43

2.9W
4.2R

Ground Elev 1017.53

Company	Godfrey L. Cabot, Inc.
Address	301 Union Bldg., Charleston, W.Va.
Farm	Holmes Merton et al
Tract	Acres 107 Serial No. 904
Well (Farm) No.	1 Lease No. 904
Quadrangle	Kenna (52)
County	Kanawha
District	Poca
Engineer	O. L. Fitz Randolph
Engineer's Registration No.	806
File No.	Drawing No.
Date	4-8-37 Scale 1" = 1320'

STATE OF WEST VIRGINIA
 Department of Mines
 OIL AND GAS DIVISION
 Charleston

WELL LOCATION MAP
 File No. KAN-360

+ Denotes location of well on U.S. Topographic Maps, scale 1 to 62,500 latitude and longitude lines being represented by border lines as shown.

— Denotes one inch spaces on border line of original tracing.

Kan 360

GODFREY L. CABOT, INC.
WELL RECORD

Holmes Morton et al #1, Serial #904
Poca District, Kanawha County

Casing & Tubing		
	Used in Drilling	Left in Well
16"	20	20
15-3/8"	216	216
10-3/4	1678	1678
8-5/8	1859	1859
7 O. D.	5057	5057
2-3/8	5149	5149

Initial Open Flow
5/10 Hg.-7" — 4,900M.
Not Shot
24 Hr. R.P. 1730#

Drilling Commenced - April 29, 1937
" Completed - August 12, 1937

Elevation 1017.53

Surface	0	20
Slate	20	60
Red Rock	60	85
Slate	85	120
Sand	120	175
Red Rock	175	200
Slate	200	211
Sand	211	245
Slate	245	250
Red Rock	250	340
Lime	340	352
Slate	352	470
Lime	470	482
Slate	482	546
Sand	546	635
Slate	635	700
Lime	700	710
Slate	710	900
Lime	900	920
Sand	920	945
Slate	945	1000
Lime	1000	1010
Slate	1010	1167
Salt Sand	1167	1540
Lime & Slate	1540	1570
Salt Sand	1570	1607
Slate	1607	1623
Lime	1623	1644
Maxton Sand	1644	1671
Slate	1671	1673
Little Lime	1673	1715
Little Lime	1715	1715
Pencil Cave	1715	1719
Big Lime	1719	1886
Slate	1886	1892
Injun Sand	1892	1897
Slate	1897	1968
Slate & Weir		
Shells	1968	2060
Slate	2060	2280
Coffee Shale	2280	2290
Slate & Berea		
Shells	2290	2723
Blue Slate	2723	3520
Brown Shale	3520	3540
Blue Slate & Shells	3540	3922
Brown Shale	3922	3935
Blue Slate	3935	3985
Brown Shale	3985	4095
Blue Slate	4095	4665
Brown Shale	4665	4680
Blue Slate	4680	4724
Brown Shale	4724	4930
Slate	4930	4950

Fresh Water 125'

1 bailer per hr.

1253

Gas 1253

2/10 Water in 2"
Decreased to 5/10 Water
in 2" after 12 hrs.

Salt Water 1273'

1 bailer per hr.

" " 1340

Hole full

" " 1350

Increase

" " 1420

"

" " 1435

"

* ^

Gas 1824-29

38/10 Water in 10"

Show of Gas 4088'

Not enough to gauge

Black Shale	4950	5007	
Corniferous Lime	5007	5123	5057
Oriskany Sand	5123	5152	
Total Depth		5152'	

Gas	5133 $\frac{1}{2}$ '	58/10	Water in	1"
"	5135	50/10	"	2"
"	5135 $\frac{1}{2}$	6/10	"	7"
"	5140	5/10	Mex.	7"
"	5141	5/10	"	7"
"	5143	28/10	"	3"
"	5144	15/10	"	3"
"	5147	5/10	"	3"
"	5149	4/10	"	3"
"	5150	17/10	"	2"
"	5152	21/10	"	2"

7781 1 930