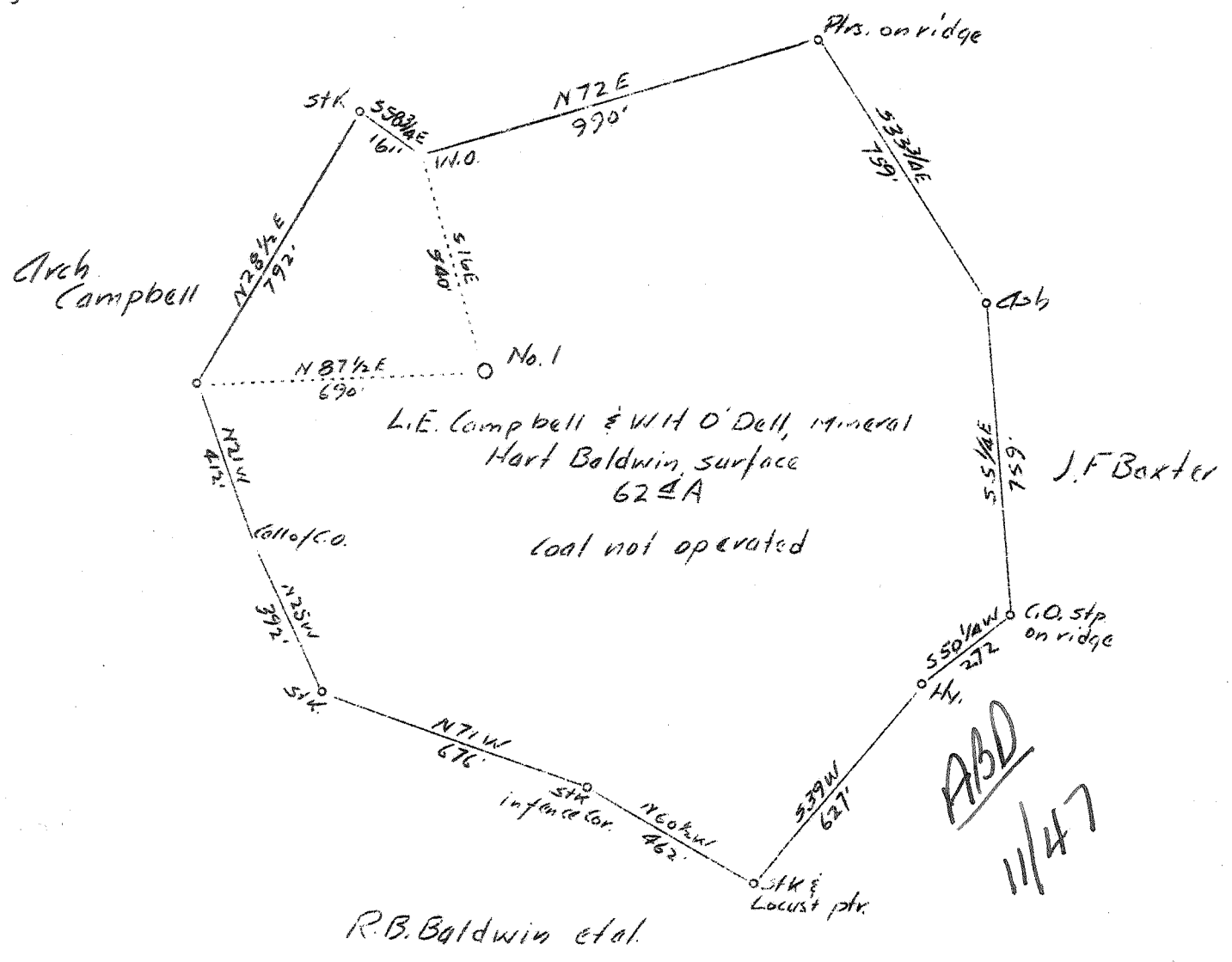


LATITUDE 38 32

LONGITUDE 81° 30'

Arch Campbell



2.86 W of 81° 30'
5.32 S of 38° 35'

2.86 W 28° 30'
1.79 S of 38° 32'

ABD
11/47

Company	Mullins Gas Co. and Brawley-Reid Oil & Gas Co.
Address	Charleston, W. Va.
Farm	L. E. Campbell & W. H. O'Dell
Tract	Acres 62 ¹ / ₄ Lease No.
Well (Farm) No.	1 Serial No.
Elevation Barometer	875
Quadrangle	Kenna (SE)
County	Kanawha District Pocahontas
Engineer	G.A. Cunningham
Engineer's Registration No.	659
File No.	Drawing No.
Date	May 4, 1937 Scale 1" = 400'

STATE OF WEST VIRGINIA
Department of Mines
OIL AND GAS DIVISION
Charleston

WELL LOCATION MAP
File No. KAN-373

+ Denotes location of well on U.S. Topographic Maps, scale 1 to 62,500, latitude and longitude lines being represented by border lines as shown.

— Denotes one inch spaces on border line of original tracing.

WEST VIRGINIA DEPARTMENT OF MINES

OIL AND GAS DIVISION

WELL RECORD

Permit No. Kan-373

Gas Well

Kenna Quad.

CASING & TUBING

Company	Brawley-Reid & Mullins Gas Co.	10 $\frac{1}{2}$ " O.D.	426	426
Address	Kanawha Banking & Trust Bldg.	8 5/8 O.D.	1540	1540
Farm	Campbell-O'Dell Acres 61 $\frac{3}{4}$	7 O.D.	4874	4874
Location	Grapevine			
Well No.	1	Elev. 875'		
District	Poca	County Kanawha		
Surface	Not given	Kind	Parmaco	
Mineral	Not given	Size	8 5/8 x 10	
Drilling	Commenced June 3, 1937	Depth	1540	
	Completed Oct. 25, 1937			
Date Shot	Oct. 26, 1937 3 $\frac{1}{2}$ ' Anchor; 3' shell 20 qts. 14'			
	4' shell 20 qts. 8'	Casing cemented: 7 O.D.-		
	3' shell at bottom, 4' above.	4874' Date not given.		
Volume	400,000 Cu. ft. (While testing)			
Rock Press.	190# (1 hr.) 1733# (12 hr.)			

PACKER

Formation	Color	Hor	TOP	Base	Result	Formations	Color	Hor	TOP	Base	Result
Clay			0	30		Lime			4364	4390	SLM
Red Rock			30	140		Oriskany Sand			4490	5019	4874'
Slate			140	200		TOTAL DEPTH				5019	
Sand			200	230		REMARKS: 7" O.D. casing 24# Grade D.					
Red Rock			230	300							
Slate			300	350		4635'	First Cave.				
Sand			350	395		4635	Cemented at.				
Slate			395	500		4756	Drilled to.				
Sand			500	556		4738	Bridged at.				
Slate			556	655		4620	Cemented back to				
Sand			655	711		4775	Drilled to.				
Slate			711	774		Bad hole, lost bailer, drilled by, cemented					
Sand			774	835		in and drilled by 10'- cemented back to					
Slate			835	997		4661'. Drilled out and drilled 3',					
Sand			997	1020		cemented back to top of bailer- drilled					
Slate			1020	1117		10', bad hole and casing.					
Salt Sand			1117	1425							
Slate			1425	1475		Gas					4996
Maxon			1475	1489		Gas 2/10 Merc. 1"-					4996 $\frac{1}{2}$
Break			1489	1505		Gas 6/10 " 2"					4938
Little Lime			1505	1525		Gas 30/10 " 2"					4994-7
Break			1525	1529		Gas 26/10 " 2"					5002
Lime Shell			1529	1535							
Pencil Cave			1535	1538							
Big Lime			1538	1713							
Big Injun			1713	1740							
Slate			1740	1750							
Lime			1750	1760							
Squaw Sand			1760	1773							
Slate & Sand			1773	2760							
Lime			2760	3570							
Slate			3570	3660							
Shale			3660	3743							
Lime			3743	3798							
Slate			3798	3895							
Shale			3895	3945							
Lime			3945	3983							
Slate & Lime			3983	4225							
Lime			4225	4350							
Slate & Shells			4350	4440							
Shale			4440	4495							
Slate			4495	4555							
Lime			4555	4575							
Shale	Brown		4575	4755							
Shale	White		4755	4800							
Shale	Black		4800	4864							