

Abandonment  +6/6/69  
 CHANGED LOCATION

GROUND ELEV. 1182.33'

Company	GODFREY L. CABOT, INC.
Address	UNION BLD. CHARLESTON, W.VA.
Farm	NELLIE B. TOMPKINS
Tract	Acres 707 Lease No. 4-301
Well (Farm) No.	7 Serial No. 907
Quadrangle	CHARLESTON
County	KANAWHA SE
District	MALDEN
Engineer	C. E. Fitzgerald
Engineer's Registration No.	806
File No.	Drawing No.
Date	MAY 29, 1937 Scale 1" = 1320'

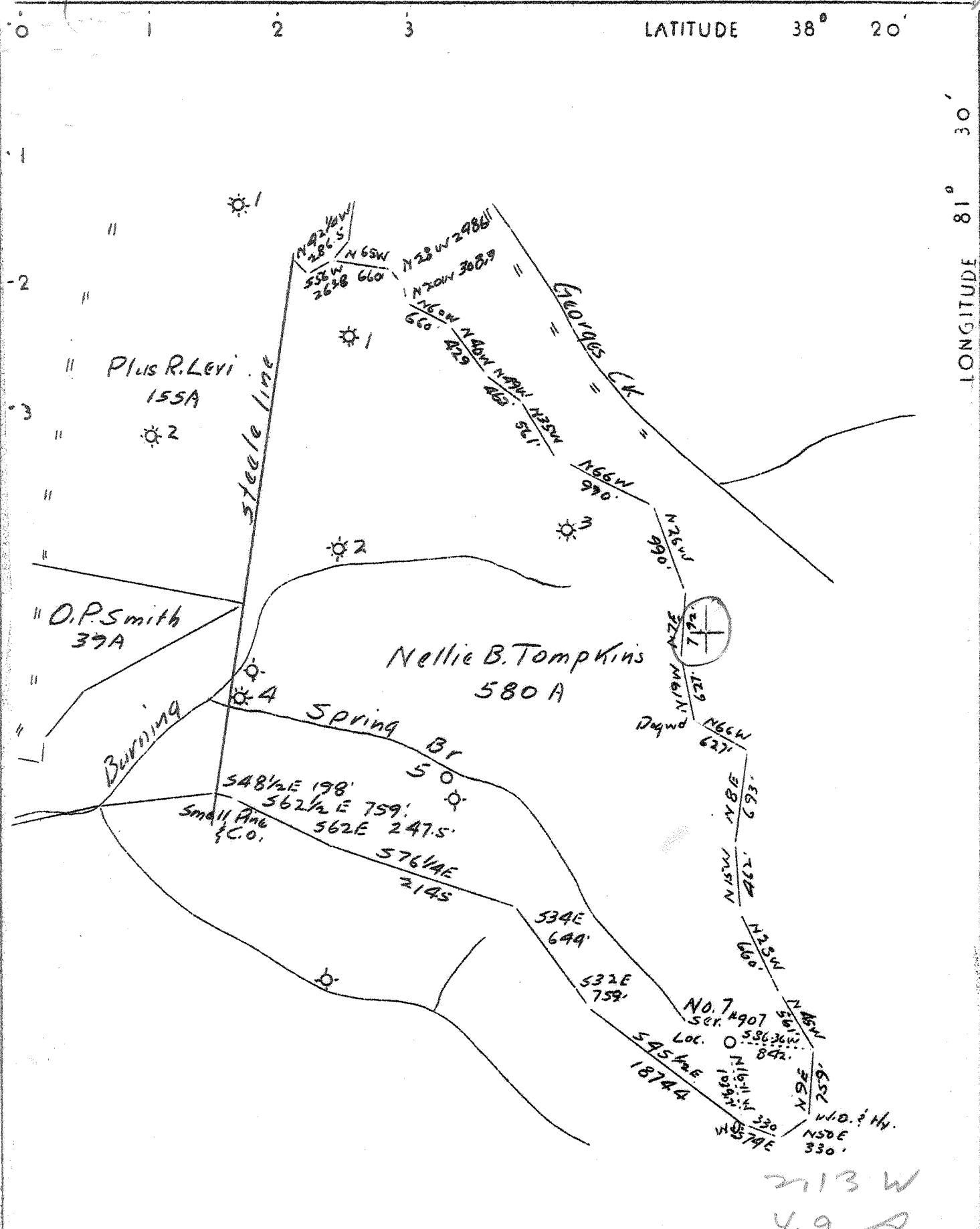
STATE OF WEST VIRGINIA  
 DEPARTMENT OF MINES  
 OIL AND GAS DIVISION  
 CHARLESTON

WELL LOCATION MAP  
 FILE NO. KAN-374-P

+ Denotes location of well on United States Topographic Maps, scale 1 to 62,500, latitude and longitude lines being represented by border lines as shown.

- Denotes one inch spaces on border line of original tracing.

6-6 214



Revised Location

Ground Elev 1182.53'

Company	Dodfrey L. Cabot, Inc.		
Address	Union Bldg. Charleston, W.Va.		
Farm	Nellie B. Tompkins		
Tract	Acres	700	Lease # 4-301
Well (Farm) No.	7	Serial No.	907
Quadrangle	Charleston <span style="border: 1px solid black; border-radius: 50%; padding: 2px;">SE</span>		
County	Kanawha		
District	Malden		
Engineer	O.L. Fitz Randolph		
Engineer's Registration #	806		
File No.	Drawing No.		
Date	May 29, 1937	Scale	1"-1320'

STATE OF WEST VIRGINIA  
 Department of Mines  
 OIL AND GAS DIVISION  
 CHARLESTON

WELL LOCATION MAP  
 FILE NO. -KAY-37A

+ Denotes location of well on United States Topographic Maps, scale 1 to 62,500, latitude and longitude lines being represented by border lines as shown.

- Denotes one inch spaces on border line of original tracing.

deep Well

