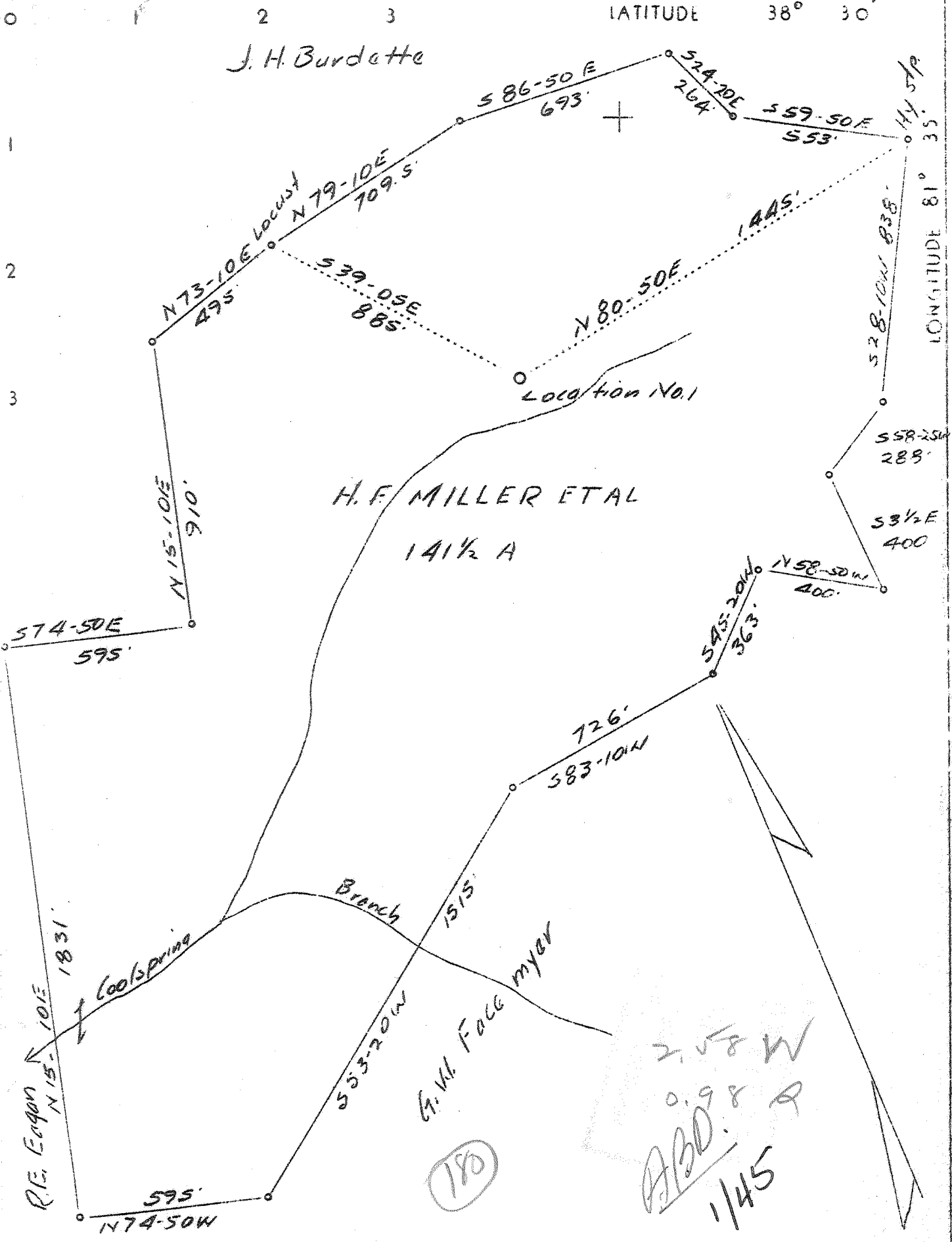


W



Company	United Carbon Co
Address	Charleston, W. Va.
Farm	H. F. Miller, et al
Tract	Acres $141\frac{1}{2}$ Lease No. 2333
Well(Farm) No.	1 Serial No. 704
Elevation (Spirit Level)	813.0
Quadrangle	Charleston
County	Kanawha District Poca
Engineer	C. B. Wilson
Engineer's Registration No.	494
File No.	Drawing No.
Date	5-20-37 Scale 1" - 400'

STATE OF WEST VIRGINIA  
 Department of Mines  
 OIL AND GAS DIVISION  
 Charleston

WELL LOCATION MAP

File No. KAN-385

+ Denotes location of well on U. S. Topographic Maps, scale 1 to 62,500 latitude and longitude lines being represented by border lines as shown.

— Denotes one inch spaces on border line of original tracing.

6-6 192



WEST VIRGINIA DEPARTMENT OF MINES  
OIL AND GAS DIVISION

W E L L R E C O R D

Permit No. Kan-385

Gas Well

Charleston Quad. *716*

CASING & TUBING

Company	United Carbon Co.	13 Cond.	16	16
Address	901 Union Bldg., Charleston, W.Va.	10	421	421
Farm	H.F. Miller Acres 141.5	8 5/8	1785	1785
Location	Tupper's Creek	6 5/8	4800	4800
Well No.	1-704 Elev. 813'	2	4936	4936
District	Poca County Kanawha			
Surface	H.F. Miller, Pocataligo, W.Va.			
Mineral	Same			
Drilling	Commenced July 9, 1937			
	Completed Oct. 29, 1937			
Date Shot	10/29/37 Depth 4889-4916'			Casing Cemented: 6 5/8" at 430' - 10/3/37.
Volume	13,687,000 Cu.Ft.			Casing Cemented: 8 5/8" at 354' - 8/18/37.
Rock Press.	1720# 24 hrs.			

Formation	Color	Hor	Top	Base	Result	Formation	Color	Hor	Top	Base	Result
Clay	Yellow		0	16		Shale	Brown		4510	4670	
Rock	Red		16	50		Slate	Light	S	4670	4720	
Slate			50	70		Shale	Black		4720	4780	
Rock	Red		70	100		Corniferous	Lime		4780	4884	
Slate	White		100	125		Oriskany Sand			4884	4928	
Rock	Red		125	160		Lime	H		4928	4936	
Sand			160	182		TOTAL DEPTH				4936	
Slate			182	200							
Rock-Shells	Red		200	295			Gas		4889	Show	
Slate			295	305			Gas		4894	78/10W.2" 3/4"	
Sand			305	330			Gas		4911	4/10M.6 5/8"	
Slate-Shells			330	350			Gas		4913	6/10M.6 5/8"	
Sand			350	378							
Slate			378	388							
Sand			388	435							
Slate-Shells			435	530							
Sand			530	550							
Slate-Shells			550	606							
Sand			606	635							
Slate			635	640							
Sand			640	680							
Slate			680	725							
Sand			725	800							
Slate-Shells			800	990							
Sand			990	1005							
Slate			1005	1023							
Sand			1023	1058							
Slate			1058	1068							
1st Salt Sand			1068	1375	Water						
Slate			1375	1380	1133						
Lime			1380	1410							
Slate			1410	1425							
Maxon Sand			1425	1527							
Slate			1527	1545							
Little Lime			1545	1563							
Pencil Cave			1563	1565							
Big Lime			1565	1727							
Injun Sand			1727	1783							
Slate-Shells			1783	2175							
Shale	Brown		2175	2185							
Berea Sand			2185	2205							
Slate-Shells			2205	3650							
Lime	White	H	3650	3870							
Shale	Brown		3870	4000							
Lime	Light	H	4000	4065							
Slate-Shells	Light	closed	4065	4300							
Slate	Light	S	4300	4510							

Shot from 4889 to 4916. 40 Qt. Nitro Glycerine  
Shot Oct. 29, 1937.  
Test before shot 2/10 M. in 6 5/8" O.D. Casing.  
Test 25 Minutes after shot 79/10 M. 6 5/8" O.D. Casing. Final test 70/10 M. 6 5/8" O.D. Casing.  
Well shut in 10/29/37.  
Shot with 20 ft. Anchor. 2-Shells 3x13 1/2". Open shot.

WEST VIRGINIA DEPARTMENT OF MINES

OIL AND GAS DIVISION

WELL RECORD

Permit No. Kan-385

Gas Well

Charleston Quad.

CASING & TUBING

Company	United Carbon Co.	13	Cond.	16	16
Address	901 Union Bldg., Charleston, W.Va.	10		421	421
Farm	H.F. Miller Acres 141.5	8 5/8		1785	1785
Location	Tupper's Creek	6 5/8		4800	4800
Well No.	1-704 Elev. 813'	2		4936	4936
District	Poca County Kanawha				
Surface	H.F. Miller, Pocatigo, W.Va.				
Mineral	Same				
Drilling	Commenced July 9, 1937			Casing Cemented - 6 5/8, 430', 10/3/37.	
	Completed Oct. 29, 1937			8 5/8", 354', 8/18/37	
Date Shot	10/29/37 Depth 4889'-4916'				
Volume	13,687,000 Cu.Ft.				
Rock Press.	1720# 24 hrs.				

Formation	Color	Hor	TOP	Base	Result	Formation	Color	Hor	TOP	Base	Result
Clay	Yellow		1	16		Slate	Light	S	4300	4510	
Rock	Red		16	50		Shale	Brown		4510	4670	
Slate			50	70		Slate	Light	S	4670	4720	
Rock	Red		70	100		Shale	Black		4720	4780	
Slate	White		100	125		Corniferous Lime			4780	4884	
Rock	Red		125	160		Oriskany Sand			4884	4928	
Sand			160	182		Lime	H		4928	4936	
Slate			182	200		TOTAL DEPTH				4936	
Rock-Shells	Red		200	295							
Slate			295	305			Gas		4889	Show	
Sand			305	330			Gas		4894	78/10W	2"
Slate-Shells			330	350			Gas		4911	4/10 M.	6 5/8"
Sand			350	378			Gas		4913	6/10 M.	6 5/8"
Slate			378	388							
Sand			388	435							
Slate-Shells			435	530							
Sand			530	550							
Slate-Shells			550	606							
Sand			606	635							
Slate			635	640							
Sand			640	680							
Slate			680	725							
Sand			725	800							
Slate-Shells			800	990							
Sand			990	1005							
Slate			1005	1023							
Sand			1023	1058							
Slate			1058	1068							
1st Salt Sand			1068	1375	Water						
Slate			1375	1380	1133'						
Lime			1380	1410							
Slate			1410	1425							
Maxon Sand			1425	1527							
Slate			1527	1545							
Little Lime			1545	1563							
Pencil Cave			1563	1565							
Big Lime			1565	1727							
Injun Sands			1727	1783							
Slate-Shells			1783	2175							
Shale	Brown		2175	2185							
Berea Sand			2185	2205							
Slate & Shells			2205	3650							
Lime	White	H	3650	3870							
Shale	Brown		3870	3970							
Slate & Shells		Closed	3970	4000							
Lime	Light	H	4000	4065							
Slate-Shells	Light	Closed	4065	4300							

Shot from 4889 to 4916  
40 qts. Nitro Glycerine

Shot Oct. 29, 1937

Test before shot 2/10 M. in 6 5/8" O.D. Cas.  
Test 25 Minutes A.S. 79/10 M. 6 5/8" O.D.  
Final Test 70/10 M. 6 5/8" O.D. Csg. (Csg.  
Well Shut in 10/29/37.

Shot with 20 Ft. Anchor. 2-shells 3' x 1 3/4"

Open shot.