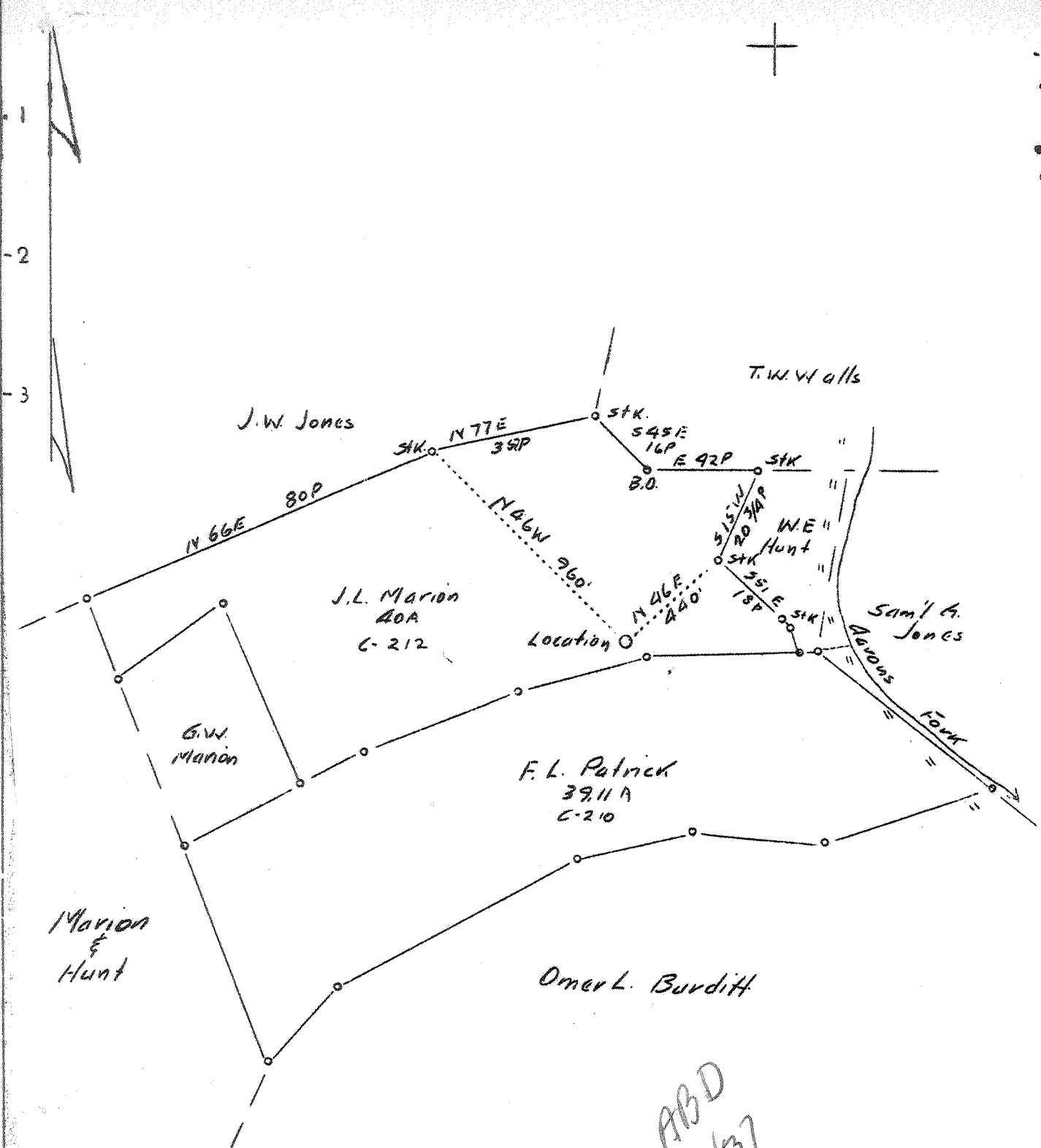


1 2 3

LATITUDE 38° 30'

LONGITUDE 81° 30'



ABD
10/37

2.04 W
0.71 A

Company	Columbian Carbon Co.
Address	Box 1240- Charleston, W.Va.
Farm	J.L. Marion & F.L. Patrick
Tract	Acres 79.11 Lease No. C-210
Well (Farm) No.	1 Serial No.
Elevation (Spirit Level)	739.0
Quadrangle	Charleston-N.E. <i>(ME)</i>
County	Kanawha District Elk
Engineer	James N. Sell
Engineer's Registration No.	772
File No.	Drawing No.
Date	May 22, 1937 Scale 1" = 30 Poles

STATE OF WEST VIRGINIA
 Department of Mines
 OIL AND GAS DIVISION
 CHARLESTON

WELL LOCATION MAP
 File No. KAIN-388

+ Denotes location of well on United States Topographic Maps, scale 1 to 62,500, latitude and longitude lines being represented by border lines as shown.

- Denotes one inch spaces on border line of original tracing.

C-210 192

WEST VIRGINIA DEPARTMENT OF MINES

OIL AND GAS DIVISION

WELL RECORD

Permit No. Kan-388

Dry Hole

Charleston Quad.

Casing & Tubing

Company	Columbian Carbon Co.	14	65 '2	
Address	Box 1240, Charleston, W.Va.	10 $\frac{3}{4}$	321'5"	Pulled
Farm	Marion & Patrick Acres 79.11	8 5/8	1467'3"	823'3"
Location	Aarons Fork	6 5/8	4811'1"	4492'11"
Well No.	1 (GW-391)			
District	Elk			
Surface	J.L. & Minnie Marion, Charleston, W.Va. & F.L. & E.B. Patrick, Big Chimney, W.Va.			Casing Cemented: See below.
Mineral	Same			
Drilling	Commenced July 7, 1937			
	Completed Sept. 30, 1937			
Date Shot	Oct. 3, 1937			Depth 4892-4943
Volume				
Rock Press.				

Formation	Color	Hor	Top	Base	Result	Formation	Color	Hor	Top	Base	Result
Sand Rock			0	20		Slate			4675	4718	
Red Rock			20	50		Shale	Black		4718	4773	
Slate			50	75	Water	Corniferous			4773	4981	
Sand			75	120	75'-	Oriskany			4881	4948	Gas
Slate			120	130	1 Blr.	Lime <i>red.</i>			4948	4959	4905
Red Rock			130	135	pr.hr.						Sm.
Broken Slate			135	240		TOTAL DEPTH				4959	Show
Sand			240	340							
Slate			340	470							
Coal			470	473		CEMENT RECORD:			7-30-37-	1450'	in 8-5/8"
Sand			473	495							Casing. Cemented solid
Slate			495	505							815' to 1450'. Used 77
Sand			505	568							sacks Incor Cement and 5
Slate			568	610							sacks Aquagel. 10' cement
Sand			610	695							left in pipe.
Slate			695	730							
Sand			730	770							9-15-37-
Slate			770	840							4783' in 6-5/8"
Sand			840	873							casing. Cemented solid
Slate			873	883							4553' to 4783'. Used 25
Sand			883	904							sacks Incor Cement. Left
Slate			904	920	Gas						10' cement in pipe.
Salt Sand			920	970	960'						
Slate			970	975	Sm.Show						
Sand			975	1105	Water						
Slate			1105	1117	1005'						
Sand			1117	1294	Sm.Show						
Slate			1294	1338	Water						
Maxon			1338	1380	1020						
Slate			1380	1396	HFW						
Little Lime			1396	1429							
Pencil Cave			1429	1432							
Big Lime			1432	1598							
Big Injun			1598	1630	Gas						
Slate&Sand, Broken			1630	1670	1601						
Slate&Shells			1670	2008	Light						
Shale	Brown		2008	2012	Show.						
Slate&Shells			2012	2019	Oil						
Lime Shells			2019	2025	1610-						
Slate&Shells			2025	3215	Light						
Shale	Brown		3215	3305	Show.						
Slate&Shells			3305	3525	Gas						
Shale	Brown		3525	3860	1870-						
Slate			3860	4370	Light						
Shale	Brown		4370	4465	Show.						
Shale	Black		4465	4540							
Shale	Brown		4540	4675							