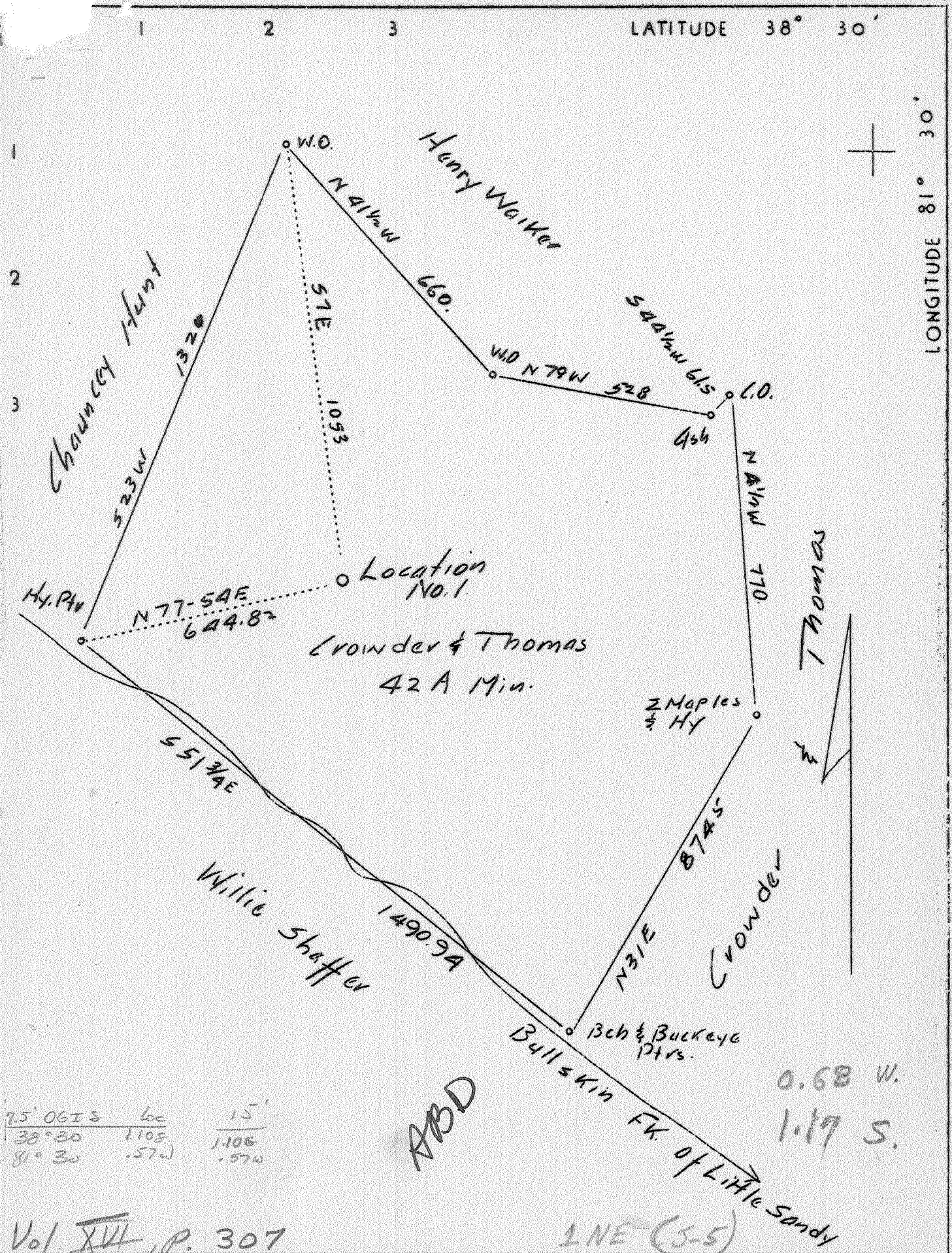


LATITUDE 38° 30'

LONGITUDE 81° 30'



75' OGIS	loc	15'
38° 30	1.108	1.108
81° 30	.572	.572

Vol. XIV, p. 307

Company	Pond Fork Oil & Gas Co.
Address	Madison, W.Va.
Farm	Crowder & Thomas
Tract	1 Acres 42 Lease No.
Well (Farm) No.	1 Serial No. 29
Elevation (Spirit Level)	921.55 (Ground)
Quadrangle	Charleston - NE
County	Kanawha District Elk
Engineer	Sigfus Olafson
Engineer's Registration No.	
File No.	Drawing No.
Date	June 1, 1937 Scale 1"=300'

STATE OF WEST VIRGINIA
 Department of Mines
 OIL AND GAS DIVISION
 CHARLESTON

WELL LOCATION MAP
 File No. KAN-520

+ Denotes location of well on United States Topographic Maps, scale 1 to 62,500, latitude and longitude lines being represented by border lines as shown.
 - Denotes one inch spaces on border line of original tracing.

Samples 12-D (2075-2250) 6-6-192 Deep Well

WEST VIRGINIA DEPARTMENT OF MINES

OIL AND GAS DIVISION

W E L L R E C O R D

Permit No. Kan-390

Gas Well

Charleston Quad. *NE.*

CASING & TUBING

Company	Pond Fork Oil & Gas Co.	10	69
Address	c/o Siegel Workman, Charleston, W.Va.	8 1/2	602' 2"
Farm	Crowder & Thomas Acres 42	6 5/8	1917' 5"
Location	Bullskin of Little Sandy	5 1/2 O.D. 17#	5044'
Well No.	1-29 Elev. 921.55		
District	Elk County Kanawha		
Surface	B.D.Thomas, Elkview, W.Va.	CASING CEMENTED: 5 1/2 O.D.	
Mineral	Crowder & Thomas	at 300'-7/21/37.	
Drilling	Commenced June 25, 1937		
	Completed Oct. 27, 1937		
Date Shot	Oct. 25, 1937	Depth 5145-5176'	
Volume	158,000 Cu.Ft.		
Rock Press.	1600# 40 hrs.		

Formation	Color	Hor S	Top	Base	Result	Formation	Color	Hor S	Top	Base	Result
Surface			0	10		Oriskany			5140	5179	Gas
Rock	Red		10	65		Lime	Black		5179	5186	5148-
Lime Shell	White		65	70		Oriskany			5186	5190	5152
Slate	Black		70	90		Sand	White		5190	5203	
Rock	Red		90	120		Lime			5203	5209	
Sand	White		120	130		TOTAL DEPTH				5209	
Rock	Red		130	170							
Slate&Shells	White		170	350		Shot Oct. 23, 1937, with 60 quarts glycerine					
Sand	White		350	450		2-3 1/2" x 15'4" shells.					
Lime	White		450	485		Top sand 5140'					
Coal	Black		485	487		Bottom sand 5203'					
Sand	White		487	500		Top shot 5145'					
Slate	Black		500	590		Bottom of shot 5176'					
Lime	White		590	630		1 hr. after shot gauged 120/10 W. 2"					
Slate	Black		630	660		2 hrs. after shot gauged 112/10 W. 2"					
Sand	White		660	760		Cleaned out four days and then gauged					
Slate&Shells	Black		760	1048	Water	14/10 W. 2"					
Salt Sand	White		1048	1245	1128'	Shut in Oct. 27, 1937					
Slate	Black		1245	1250	2 Bail.						
Salt Sand	White		1250	1365	pr.hr.						
Slate&Shells	Black		1365	1414							
Salt Sand	White		1414	1560	Water						
Lime	Black		1560	1580	1170'						
Maxon	White		1580	1600	Hole						
L.Lime	Black		1600	1620	Full						
Slate	Black		1620	1625							
Lime Shell	Gray		1625	1635							
Pencil Cave			1635	1640							
B.Lime	White		1640	1780	Sh.Oil	5026	5140	5203			
B.Injun	Gray		1780	1818	1818-22	922	922	922			
Lime	Black		1818	1938	(Black)	4104	4218	4281			
Slate&Shells	Black		1938	2075							
Weir			2075	2145	Sh.Oil						
Slate&Shells			2145	2222	(Black)						
Berea Grit Shell			2222	2227	2075-						
Slate&Shells	White		2227	3400	2082						
Shale	Brown		3400	3475							
Slate&Shells			3475	3880	Sh.Gas						
Shale	Brown		3880	3915	3747-						
Slate&Shells			3915	4077	3780						
Shale	Brown		4077	4093	Gas						
Slate			4093	4620	4077-87						
Shale	Brown		4620	4870							
Slate	White		4870	4890							
Shale	Brown		4890	5026							
Corniferous	Lime, White		5026	5140							