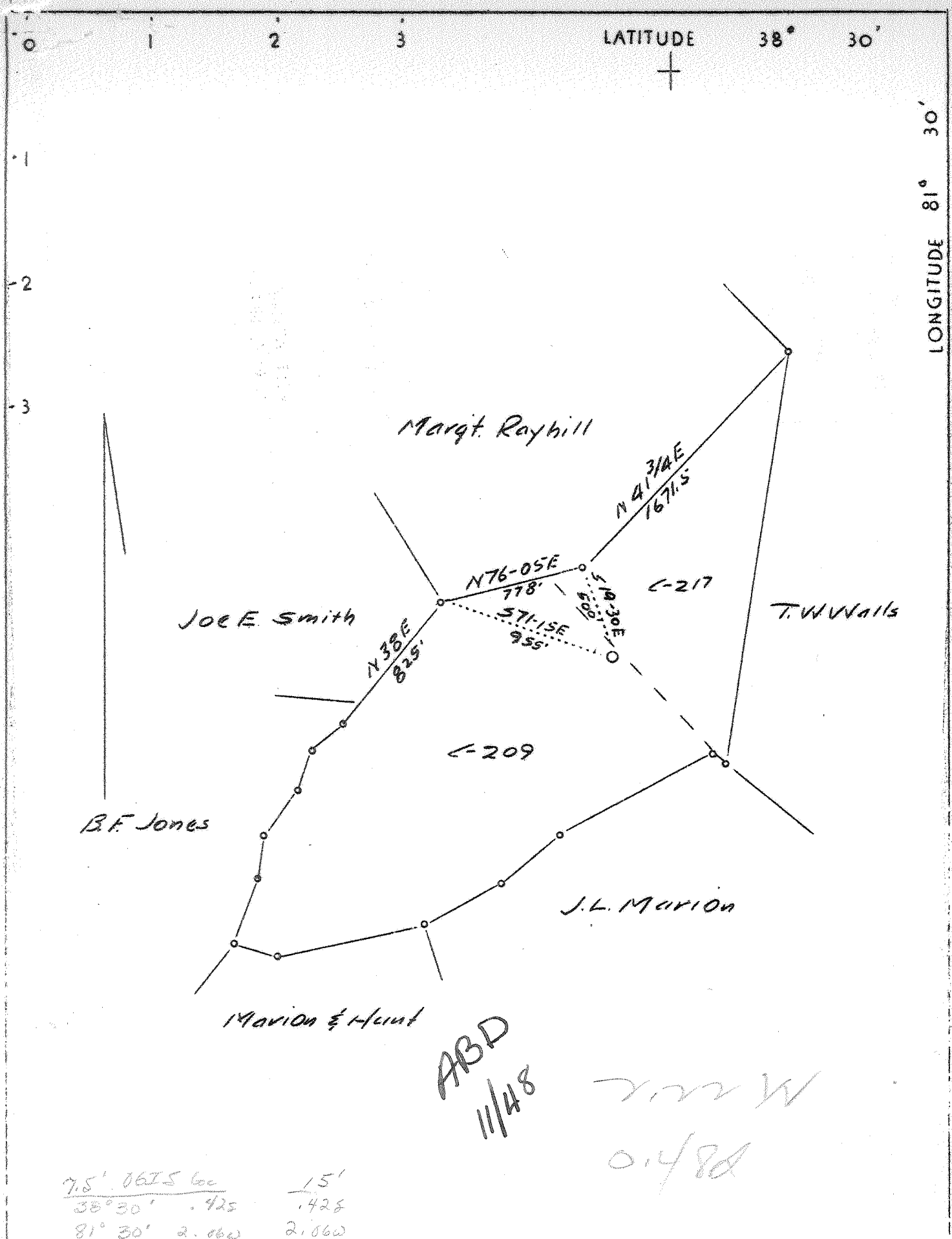


911



$\frac{7.5' \cdot 0615 \text{ sec}}{38^\circ 30' \cdot .425} = \frac{15'}{.425}$
 $\frac{81^\circ 30' \cdot 2.060}{2.060} = 2.060$

Company	Columbian Carbon Co.
Address	Box 1240, Charleston, W.Va.
Farm	J.W. Jones
Tract	Acres 78 Lease No. C209 & 217
Well(Farm)No.	1 Serial No.
Elevation (Spirit Level)	775
Quadrangle	Charleston
County	Kanawha District Elk
Engineer	C.A. Branham
Engineer's Registration No.	683
File No.	Drawing No.
Date	6/7/37 Scale 1"-660'

STATE OF WEST VIRGINIA
 Department of Mines
 OIL AND GAS DIVISION
 CHARLESTON

WELL LOCATION MAP
 File No. KAN-393

+ Denotes location of well on United States Topographic Maps, Scale 1 to 62,500, latitude and longitude lines being represented by border lines as shown.

— Denotes one inch spaces on border line of original tracing.

6-6 192

WEST VIRGINIA DEPARTMENT OF MINES

OIL AND GAS DIVISION

WELL RECORD

Permit No. Kan-393

Gas Well

Charleston Quad. *NE*

CASING & TUBING

Company	Columbian Carbon Co.	14"	60'	60'
Address	Box 1240, Charleston, W.Va.	10 $\frac{3}{4}$ "	390'1"	Pulled
Farm	J.W. Jones Acres 78	8 5/8"	1506'9"	1506'9"
Location	Aarons Fork	6 5/8"	4851'8"	4851'8"
Well No.	1 (GW-393)	Elev. 778.9 DF	2 3/8"	4984'11" 4984'11"
District	Elk	County <u>Kanawha</u>	3 1/2"	72' 72'
Surface	J.W. Jones, Box 42, Big Chimney, W.Va.			
Oil & Gas only	Glenn Oil & Gas Co., Charleston, W.Va.		PACKER	
	J.W. Jones & M.E. Jones, Big Chimney, W.Va.			
Drilling	Commenced 6-23-37	Kind	2x6-5/8" OWS	
	Completed 10-23-37	Conical Sleeve Swabbing		
Date Shot	10-23-37	Depth	5'0"	
Volume	2,620,368 Cu.Ft.	Depth	4900'	
Rock Press.	1200 # 48 hrs.			

Formation	Color	Hor	Top	Base	Result	Formation	Color	Hor	Top	Base	Result
Surface			0	40		Lime	Black		4959	4972	Gas
Red Rock			40	90							4941-
Slate			90	130		TOTAL DEPTH				4972	4946 $\frac{1}{2}$
Sand			130	160							2nd
Red Rock			160	180							pay.
Slate			180	290							
Sand			290	450							
Slate			450	475							
Sand			475	505							
Slate&Shells			505	540							
Sand			540	625							
Slate			625	650							
Sand			650	730							
Slate& Lime	Shells		730	875							
Sand&Shells			875	950							
Red Rock			950	958							
Shale & Shells			958	980	Water						
1st Salt Sand			980	1135	999' hr.						
Slate & Shells			1135	1200	1-10" Bl. Gas Sh.						
2nd Salt Sand			1200	1288	999'						
Slate & Lime			1288	1305	Water						
3rd Salt Sand			1305	1355	1060						
Slate			1355	1400	HFW						
Sand			1400	1420							
Slate			1420	1439							
Little Lime			1439	1463							
Pencil Cave			1463	1467							
Big Lime			1467	1634	S.L.M.						
Big Injun			1634	1642	Gas Sh.						
Slate & Shells			1642	1950	1640						
Shell			1950	1957							
Slate			1957	1970							
Shell			1970	1980							
Shale & Shells			1980	3266							
Shale	Brown		3266	3325							
Slate & Shells			3325	3390							
Lime Shells			3390	3420							
Slate & Shells			3420	3904							
Shale	Brown		3904	3910							
Slate	White		3910	4400							
Slate	Black		4400	4435							
Shale	Brown		4435	4705							
Slate	White		4705	4738							
Shale	Brown		4738	4805							
Corniferous	Lime		4805	4914	Gas						
Oriskany			4914	4959	4931-						
					4931 $\frac{1}{2}$						- 1st pay