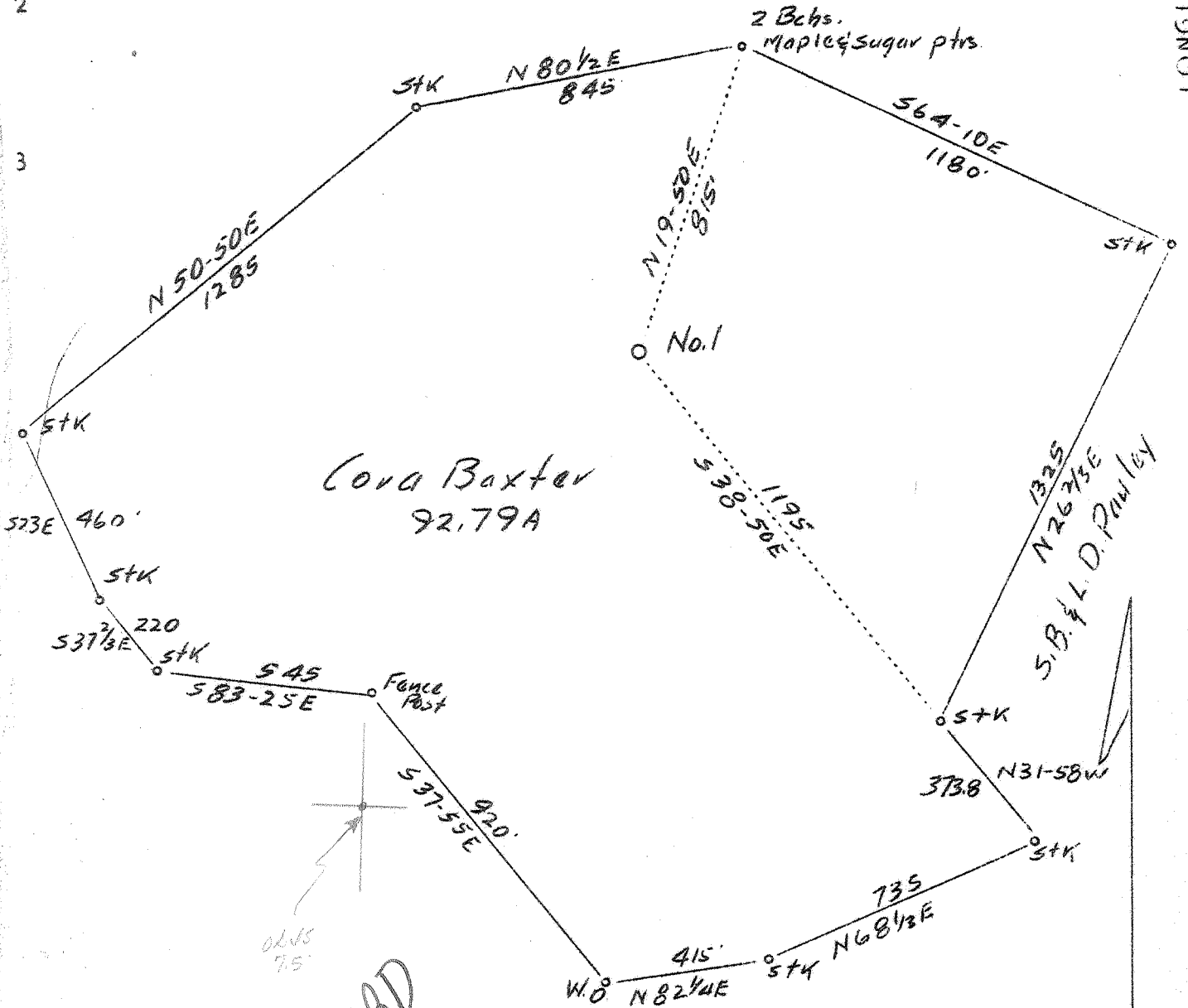


M

5.69-S of 38°35'
1.90-W of 81°30'

LATITUDE 38° 31'

LONGITUDE 81° 32'



Cora Baxter
92.79A

T.W Walls et al

0.145 75' loc 15'
 38°30'30" 2.758 5.635 1.90
 81°30' 2.50 2.00
 all
 Reference T.S. quad.

(?) 1.9 W of 81°30'
 0.05 mi ± north of 38-30'

Company	Benedum-Trees Oil Co.
Address	Pittsburgh, Pa.
Farm	Cora Baxter
Tract	Acres 92.79 Lease No.
Well (Farm) No.	Serial No.
Elevation (Spirit Level)	850.76'S
Quadrangle	Kenna (L.E.)
County	Kanawha District Elk
Engineer	J.H. High
Engineer's Registration No.	156
File No.	Drawing No.
Date	June 1, 1937 Scale 1"=400'

STATE OF WEST VIRGINIA
 Department of Mines
 OIL AND GAS DIVISION
 CHARLESTON

WELL LOCATION MAP

File No. KAN-395

+ Denotes location of well on United States Topographic Maps, scale 1 to 62,500, latitude and longitude lines being represented by border lines as shown.

— Denotes one inch spaces on

CORA BAXTER NO. 1 WELL.

Elk District, Kanawha County, W. Va.
 By Benedum-Trees Oil Co., Pittsburgh, Pa.
 Drilled under permit Kan-395.
 On 92.79 acres.
 Elevation, 741.72' L.
 Surface and minerals owned by Cora Baxter et al., Elkview, W. Va.
 Drilling commenced June 15, 1937; completed, Sept. 28, 1937.
 Shot Sept. 29, 1937, at 4903-30'.
 Open flow, 6/10ths Merc. in 2".
 Volume, 431,000 cu. ft.
 Rock pressure, 1425 lbs. in 36 hrs.
 Fresh water at 20'.
 Salt water at 985', hole full.
 13" casing, 60'; 10", 445'; 8 1/2" 28#, 1485'; 7" 24#, 4790'; 2" tubing, 4908'.
 Casing cemented: 7" O.D., 195 ft., at 4790'.
 William Misminins, Elkview, Pa., Contractor.
 7,000,000 cu. ft. gas at 1586'; blew down to 500,000 cu. ft. in 48 hrs.
 and to 20,000 cu. ft. in two weeks.
 Well shot with 120 qts. glycerine. Tamp shot. Top of shot, 4903'.
 Bottom of shot, 4930'. 1050# pea gravel tamping used. Hole
 bridged after shot. Hole cleaned to 4918 1/2' SLM. 6 ft. perforation
 on bottom of tubing with 24 - 1/2" holes. Well equipped with Otis
 choke.
 7" O.D. 24# pipe cemented by Halliburton, using 15 bags Incor cement, all
 cement going behind pipe. Estimate 195 ft. cemented.
 Gas well. Record to RCT from A. M. Nuernberg, Benedum-Trees Oil Co.,
 April 1, 1943.

850
 1000
 1200
 1400
 1600
 1800
 2000
 2200
 2400
 2600
 2800
 3000
 3200
 3400
 3600
 3800
 4000
 4200
 4400
 4600
 4800
 5000

	Top.	Bottom.
Blue mud	0	12
Sand and gravel (fresh water at 20')	12	30
Red rock	30	40
White sand	40	60
White shale (fresh water at 82')	60	100
Sand	100	120
White slate	120	250
White sand	250	302
Slate	302	328
Sand	328	390
Dark shale	390	440
Hard sand	440	475
Shale	475	530
Sand	530	610
Shale	610	640
Sand	640	720
Shale	720	865
Sand	865	895
Shale	895	910
Salt Sand (hole full water, 985')	910	1105
Lime	1105	1125
Salt Sand	1125	1225
Shale	1225	1255
Lime	1255	1280
Sand	1280	1340
Shale	1340	1355
Lime	1355	1375
Shale	1375	1420

(OVER)

CORA BAXTER NO. 1 WELL (Continued).

	Top.	Bottom.
Lime	1420	- 1435
Slate	1435	- 1440
Lime (7,000,000 cu. ft. gas at 1586'; blew down to 500,000 cu. ft. in 48 hrs., and to 20,000 cu. ft. in two weeks)	1440	- 1640
White slate	1640	- 1650
Shale and shells	1650	- 2720
Slate and shells	2720	- 3220
Brown shale	3220	- 3300
Slate and shells	3300	- 3750
Brown shale	3750	- 3900
Slate and shells	3900	- 4425
Brown shale	4425	- 4650
Black shale	4750	- 4772 (SLM)
Corniferous Lime	4772	- 4886
Oriskany Sand (gas pay, 4904-4905', 106,000 cu. ft.)	4886	- 4930
Sandy lime	4930	- 4942
Total depth		4942
Hole filled back to		4930