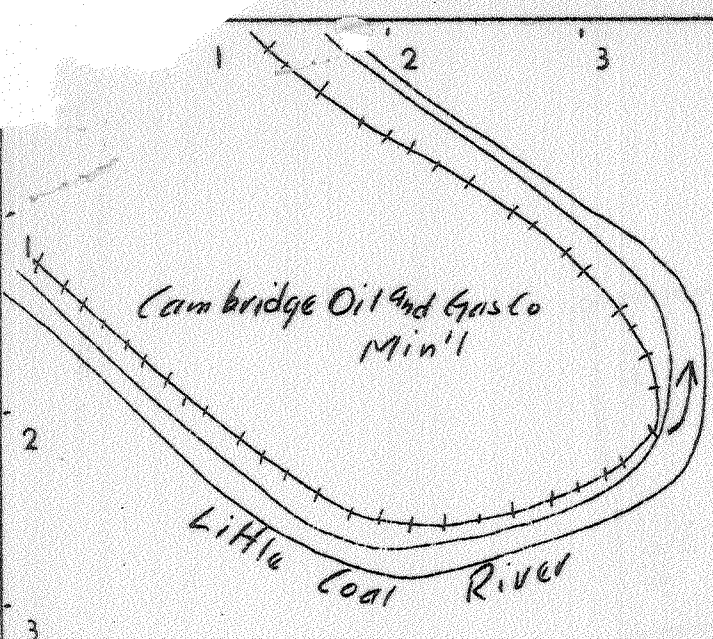


LATITUDE 38° 15'

81° 47' 30"

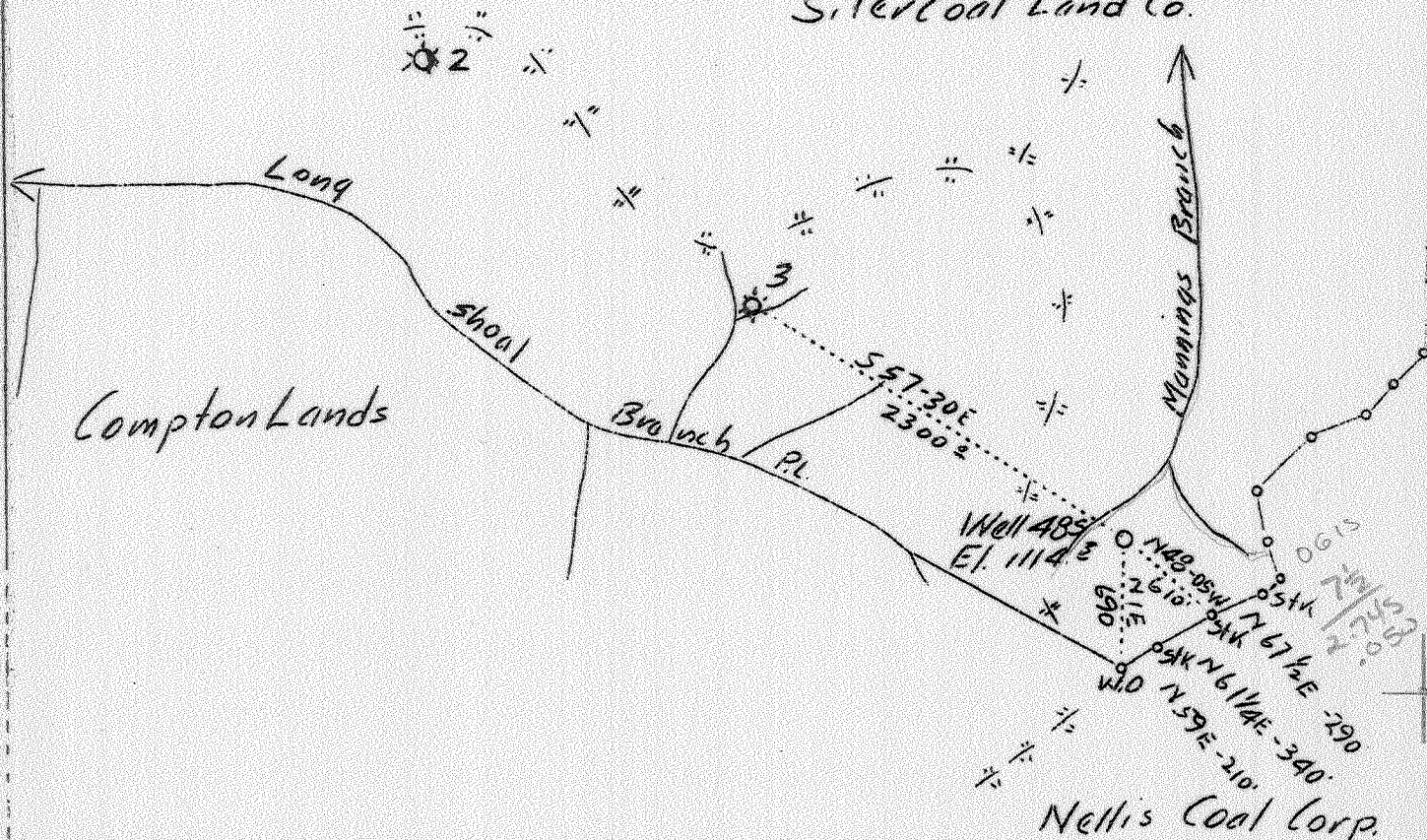
81° 45'

LONGITUDE



Siler Coal Land Co.

Compton Lands



2.73 S.
2.32 W.

Vol. XVI, P. 591

LC (K-4)

Company	The Owens Libbey-Owens Gas Dept.
Address	Box 1375 Charleston, W.Va.
Farm	Siler Coal Land Co.
Tract	Acres 4642 Lease No. 324
Well (Farm) No.	4 Serial No. 485
Quadrangle	Madison - NE
County	Kanawha
District	Washington
Engineer	T.S. Flournoy
Engineer's Registration No.	269
File No.	Drawing No.
Date	June 14, 1937 Scale 1"-1000'

STATE OF WEST VIRGINIA
Department of Mines
OIL AND GAS DIVISION
CHARLESTON

WELL LOCATION MAP
File No. KAN-397

+ Denotes location of well on United States Topographic Maps, scale 1 to 62,500, latitude and longitude lines being represented by border lines as shown. 3-0 277
- Denotes one inch spaces on border line of original tracing.

Samples 20-J (2370-2408, 2439-2494, 4166) - 4750) Deep Well

WEST VIRGINIA DEPARTMENT OF MINES

OIL AND GAS DIVISION

WELL RECORD

Permit No. Kan-397

Gas Well

Madison Quad.

CASING & TUBING

Company	The Owens, Libbey-Owens Gas Dept.	10	25	25
Address	P.O.Box 1375, Charleston, W.Va.	8 $\frac{1}{4}$	909	909
Farm	Siler Coal Land Co. Acres 4642	6 5/8	1707	1707
Location	Little Coal River	3	2390	2390
Well No.	485 Elev. 1114.3'			
District	Washington County Kanawha			
Surface	Siler Coal Land Co., Charleston, W.Va.			
Mineral	Same			
Drilling	Commenced Aug. 4, 1937 Completed Oct. 19, 1937	Kind	Parmco Disc Wall	
Date Shot	Oct. 14, 1937	Size	3" x 6-5/8 x 16"	
Volume	414,000 Cu.Ft.	Depth	2384 $\frac{1}{2}$ -2390'	
Rock Press.	326# 60 hrs.			

PACKER

Formation	Color	Hor	TOP	Base	Result	Formation	Color	Hor	TOP	Base	Result
Surface	Yellow	S	0	8		Shell	White	H	2280	2315	Gas
Slate	Dark	S	8	57		Slate&Shells	Gray	S	2315	2370	1980
Sand	Gray	S	57	204		Shale	Brown	S	2370	2383	16,000
Slate	Dark	S	204	245		Berca Sand	Gray	H	2383	2393	
Coal	Black	S	245	249	-No 5 Bl?	Shell	Gray	H	2393	2403	
Slate	Dark	S	249	259		Slate&Shells	Gray	S	2403	2644	
Sand	White	H	259	309		Shell	Dark	H	2644	2681	
Coal	Black	S	309	313	e-N. 501	Slate & Shells	Gray	S	2681	3121	Gas
Sand	White	S	313	323		Shell	Gray	H	3121	3129	3077'
Slate	White	S	323	342		Slate	Gray	S	3129	3151	31,000
Sand	White	S	342	405		Slate&Shells	Gray	S	3151	3184	
Slate&Shells	White	S	405	460		Slate	Gray	S	3184	3196	Gas
Sand	White	S	460	584		Shell	Gray	H	3196	3204	3129
Slate	Black	S	584	599		Slate	Gray	S	3204	3214	61,000
Sand	White	M	599	657		Slate&Shells	Gray	S	3214	3313	
Coal	Black	S	657	661	Water	Shell	Gray	H	3313	3319	Gas
Slate	White	S	661	697	660'	Shale	Brown	S	3319	3381	3163'
Sand	White	S	697	702	4 Bails	Shell	Gray	H	3381	3387	16,000
Slate	White	S	702	728	pr. hr.	Shale	Brown	S	3387	3397	
Coal	Black	S	728	731		Slate	Gray	S	3397	3420	Gas
Slate	White	S	731	748		Slate&Shells	Gray	S	3420	3460	3256'
Sand	White	H	748	767		Shell	Dark	H	3460	3474	7,000
Slate	White	S	767	802		Slate&Shells	Gray	S	3474	3506	
Salt Sand	White	H	802	909		Slate	Gray	S	3506	3520	Gas
Salt Sand	White	H	909	1014	Water	Shell	Dark	H	3520	3560	3291'
Slate	White	S	1014	1024	934'	Slate	Gray	S	3560	3565	7,000
Salt Sand	White	H	1024	1306	Hole	Slate&Shells	Dark	H	3565	3583	
Slate&Shells	Dark	H	1306	1330	Full	Slate	Gray	S	3583	3590	Gas
Salt Sand	White	H	1330	1554		Shale	Brown	S	3590	3602	3445'
Red Rock		S	1554	1556		Slate&Shells	Dark	H	3602	3629	14,000
Slate&Shells	White	H	1556	1576		Lime Shell	Dark	H	3629	3641	
Shells	White	H	1576	1589		Slate&Shells	Dark	H	3641	3654	
Slate&Shells	Light	H	1589	1628		Shell	Dark	H	3654	3700	Gas
Shells	Dark	H	1628	1647		Slate&Shells	Dark	H	3700	3751	3710'
Slate	Dark	S	1647	1652	Gas 1777'	Shale	Brown	S	3751	3757	20,000
Little Lime	Dark	H	1652	1686	230,000	Slate&Shells	Dark	M	3757	3829	
Slate	Black	S	1686	1689		Shale	Brown	S	3829	3857	
Big Lime	Dark	H	1689	1697		Slate&Shells	Dark	H	3857	3878	
Big Lime	White	H	1697	1892	Gas	Shale	Brown	S	3878	3959	
Injun Sand	Red	H	1892	1959	1846'	Slate&Shells	Dark	H	3959	3998	
Slate&Shells	Gray	S	1959	1984	22,000	Slate&Shells	Gray	S	3998	4018	
Slate&Shells	Dark	H	1984	2009		Shale	Gray	S	4018	4042	
Slate&Shells	Gray	M	2009	2064	Gas	Shale	Brown	S	4042	4048	
Shells	Gray	H	2064	2090	1924'	Shell	Dark	H	4048	4056	
Slate	Gray	S	2090	2166	27,000	Shale	Dark	S	4056	4065	
Shell	White	H	2166	2180		Slate&Shells	Gray	H	4065	4090	
Slate&Shells	Gray	S	2180	2280		Slate&Shells	Gray	S&H	4090	4146	
						Slate&Shells	Gray	S	4146	4152	

OIL AND GAS DIVISION

WELL RECORD

Permit No. Kan-397

Gas Well

Madison Quad.

CASING & TUBING

Company The Owens, Libbey-Owens Gas Dept.
 Address P.O.Box 1375, Charleston, W.Va.
 Farm Siler Coal Land Co. Acres 4642
 Location Little Coal River
 Well No. 485 Elev. 1114.5'

Formation	Color	Hor	TOP	Base	Result	Formation	Color	Hor	TOP	Base	Result
Slate&Shells	Dark	S	4432	4459							
Slate&Shells	Gray	S	4459	4480							
Slate&Shells	Dark	S	4480	4521							
Slate&Shells	Gray	S	4521	4541							
Shale	Brown	S	4541	4575							
Shell	Dark	H	4575	4581							
Shale	Brown	S	4581	4642							
Shell	Dark	H	4642	4653							
Shale	Brown	S	4653	4720							
Shell	Dark	H	4720	4728							
Shale	Brown	S	4728	4745							
Corniferous	Lime										
	White	H	4745	4750							
TOTAL DEPTH				4750							

4745
 1114

 3631