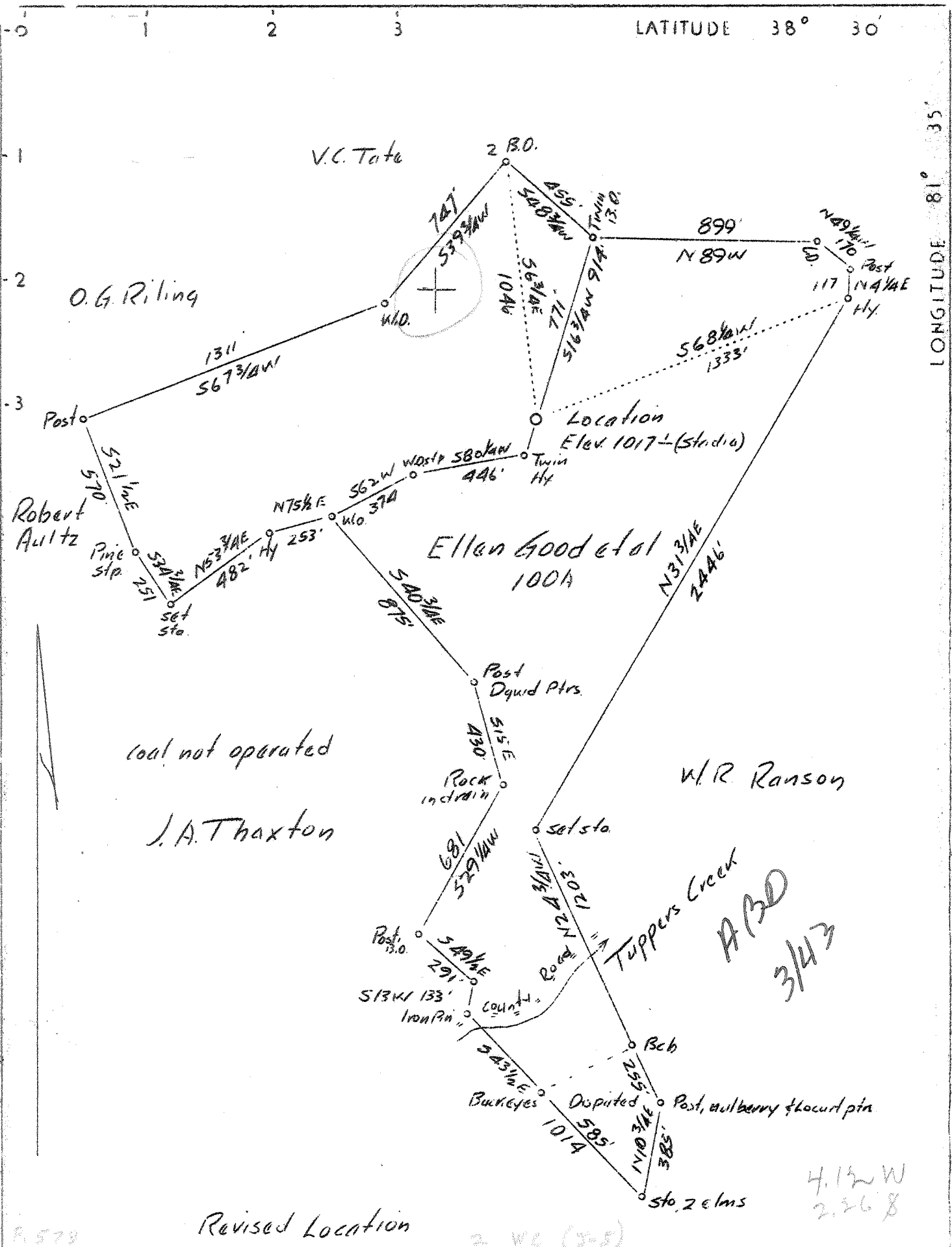


4-

P



Revised Location

Company	West Virginia Gas Corp.
Address	401 Union Bldg. Charlestown, W. Va.
Farm	Ellen Good et al.
Tract	Acres 100 Lease No. 316&317
Well (Farm) No.	1 Serial No. 0-
Elevation	(Spirit Level) 1017.1 (Stadia)
Quadrangle	Charleston N.W. (N.C.)
County	Kanawha District Union
Engineer	Robert S. Hyde
Engineer's Registration No.	646
File No.	3 Drawing No. W.O.
Date	June 14, 1937 Scale 1"-500'

STATE OF WEST VIRGINIA
 Department of Mines
 OIL AND GAS DIVISION
 CHARLESTON

WELL LOCATION MAP
 File No. KAN-399

+ Denotes location of well on United States Topographic Maps, scale 1 to 62,500, latitude and longitude lines being represented by border lines as shown.

— Denotes one inch spaces on border line of original tracing.

G-G 19

Deep Well

WEST VIRGINIA DEPARTMENT OF MINES

OIL AND GAS DIVISION

W E L L R E C O R D

Permit No. Kan-399

Gas Well

Charleston Quad.

CASING & TUBING

Company	W.Va. Gas Corp.	13	16'3"	16'3"
Address	401 Union Bldg., Charleston, W.Va.	10	657	
Farm	Ellen Good, et al, Acres 100	8 $\frac{1}{4}$	2015'4"	2015'4"
Location	Tuppers Creek	6 5/8	5023'6"	5023'6"
Well No.	#1 Ser. #0-27 Elev. 983'	2	5121	5121
District	Union County Kanawha			
Surface	Ellen Good, R.R.#5, Charleston, W.Va.			
Mineral	Same, et al.	Perf. top	5119	
Drilling	Commenced 9/24/37	Perf. bot.	5125	
	Completed 2/7/38			
Date Shot	2/2/38	Depth 5100-5130' (200# Gelatin)		
Volume	2,181 M. 2 hrs. A.S.	CASING CEMENTED: 8 $\frac{1}{4}$ "		
Rock Press.	1740# 15 hrs.	110 bags behind pipe.		
		6 5/8" 30 bags behind pipe.		

Formation Color		Hor	TOP	Base	Result	Formation Color		Hor	TOP	Base	Result
Surface			0	14		Slate & Shells			3710	4080	Gas
Shells			14	20		Shale	Brown		4080	4245	Pay
Fire Clay			20	40		Slate & Shells			4245	4684	5099
Red Rock			40	50		Shale	Dark	S	4684	4740	5107 $\frac{1}{2}$
Sand			50	95		Shale	Brown		4740	4969	
Slate			95	130		Corniferous Lime			4969	5093	Gas
Red Rock			130	145		Oriskany			5093	5139	Pay
Slate			145	165		Lime			5139	5145	5118
Red Rock			165	200		TOTAL DEPTH				5145	5119
Slate			200	225							
Red Rock			225	274							
Sand			274	320							
Red Rock			320	330							
Lime Shell	H		330	345							
Red Rock			345	370							
Sand			370	395							
Slate			395	420							
Lime Shell			420	450							
Red Rock			450	565							
Slate & Shells			565	647							
Sand			647	700							
Slate & Shells			700	725							
Sand			725	765							
Slate			765	800							
Sand			800	877							
Slate & Shells			877	1158							
Sand			1158	1255							
Slate			1255	1280							
Salt Sand			1280	1586	Water						
Slate			1586	1590	1370						
Lime	Black		1590	1620	Little						
Slate	Black		1620	1635	Gas						
Lime	Black		1635	1645	1328 &						
Maxon			1645	1759	2330						
Little Lime			1759	1787							
Pencil Cave			1787	1790							
Lime Shell			1790	1796							
Pencil Cave			1796	1800							
Big Lime			1800	1960							
Sand			1960	1990							
Slate			1990	2000							
Lime			2000	2070							
Slate & Shells			2070	2415							
Shale	Brown		2415	2422							
Berea Sand			2422	2430							
Slate & Shells			2430	3650							
Shale	Brown		3650	3710							

NOTE: Best gauge 2181 M, blew down in 12 hrs. to 235M. (B.S. gauged 464M, 2 hrs. A.S. 2,181 M.) Test when tubed in 1,088 M.

TESTS:
 5103 $\frac{1}{2}$ -5105 281 M.
 5106-5107 $\frac{1}{2}$ 398M 70/10 W.2"
 5118-5119 593 M. 2/10 W.6 5/8"
 5131 464 M. 7/10 Hg.2"
 15 Min, A.S. 4/10 hg. 6 5/8" (3096M)