

M

1 2 3

LATITUDE 38° 30'

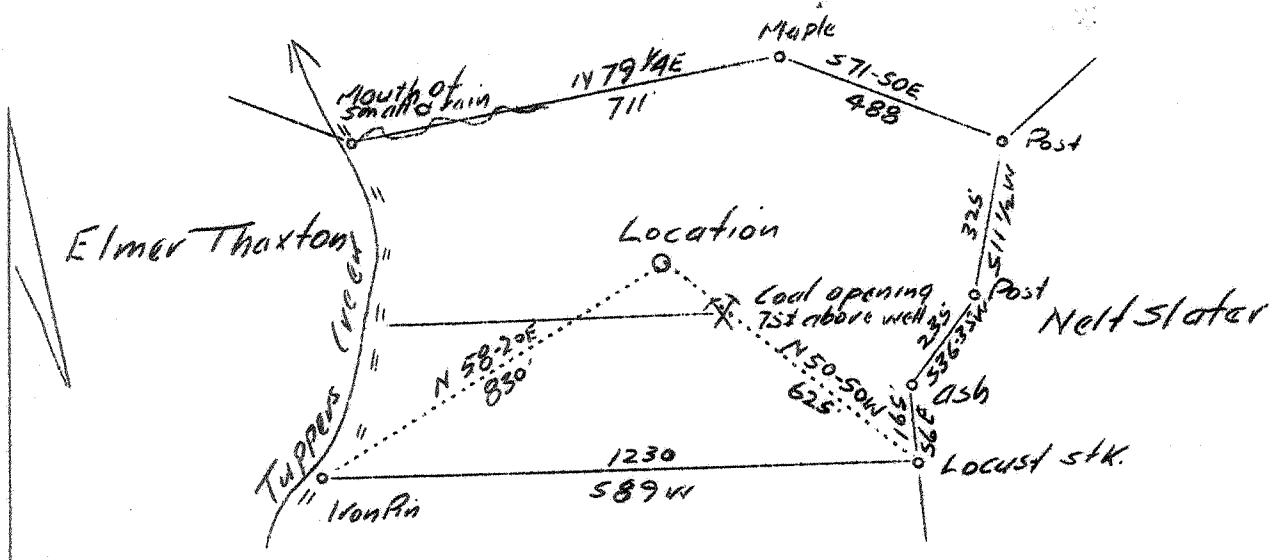
LONGITUDE 81° 35'

-1
-2
-3

Will Blankinship

Elmer Thaxton

Emet Thaxton



ABD
5/43

3.2 W
2.1 of

Company	Columbian Carbon Co.
Address	Box 1240, Charleston, W.Va.
Farm	Mary A. Fisher
Tract	Acres 25.5. Lease No. Temp. 318
Well (Farm) No.	1 Serial No.
Elevation (Bar)	840'
Quadrangle	Charleston
County	Kanawha District Poca
Engineer	C.A. Branham
Engineer's Registration No.	683
File No.	Drawing No.
Date	6/14/37 Scale 1"-400'

STATE OF WEST VIRGINIA
Department of Mines
OIL AND GAS DIVISION
CHARLESTON
WELL LOCATION MAP

File No. KAN-400

+ Denotes location of well on United States Topographic Maps, scale 1 to 62,500, latitude and longitude lines being represented by border lines as shown.

— Denotes 1" spaces on border line of original tracing.

DEEP WELL 6-6-1937

WEST VIRGINIA DEPARTMENT OF MINES

OIL AND GAS DIVISION

WELL RECORD

Permit No. Kan-400

Gas Well

Charleston Quad.

CASING & TUBING

Company	Columbian Carbon Co.	14"	43'6"	43'6"
Address	Box 1240, Charleston, W.Va.	10 $\frac{3}{4}$ "	490'10"	Pulled
Farm	Mary A. Fisher (C-1239)	Acres 25.5	8 5/8	1873'9" 1873'9"
Location	Tuppers Creek		6 5/8	4888'10" 4888'10"
Well No.	1 (GW-397)			
District	Poca			Elev. 840.21 d.f.
Surface	Mary A. Fisher			County Kanawha
Oil & Gas	Mary A. Fisher, c/o Mrs. John C. Huddlestone		2 3/8	5034'11" 5034'11"
Address	1599 Quarrier St., Charleston, W.Va.			
Coal	Alex M. Bruen, 19 E. 83rd St., New York City			
Drilling	Commenced 8-15-37			
	Completed 11-11-37			
Date Shot	11-11-37	Depth 4945-4970		Casing Record: See note below.
Volume	2,425,000 Cu. Ft.			
Rock Press.	1,000# 1 hr.			
Oil	Show (560')			

Formation	Color	Hor	TOP	Base	Result	Formation	Color	Hor	TOP	Base	Result
Red Rock			0	40		TOTAL DEPTH					5012
Sand			40	105							Gas
Red Rock			105	200							2nd
Lime			200	255							Pay
Red Rock			255	375							4955-
Sand			375	440							4969
Slate			440	485	Gas-Show						Cement Record: 9/16/37 -Cemented around
Sand			485	505	485						8 5/8" casing. Cemented with 100 Sacks
Slate			505	525							Alpha cement, 80 sacks mixed with 2%
Sand, Broken			525	685	Gas&Oil						Aquagel and 20 sacks neat. 5 sacks Aquagel
Slate			685	725	560'-						mixed with 5% solution ran ahead of
Sand			725	755	Show						cement. Pipe went back to bottom O.K.
Slate			755	805							
Sand			805	820							10/22/37-Cemented 6 5/8"
Slate&Shells			820	895							casing. Used 25 sacks Alpha cement. 9'
Sand			895	915							spacer ran on bottom to stop plug. 10'
Slate			915	950							cement left in pipe.
1st Salt Sand			950	1080							
Slate			1080	1085							
2nd Salt Sand			1085	1452	Water-						
Slate	Black		1452	1477	H.F.W.						
Maxon Sand			1477	1584	1197						
Little Lime			1584	1614							
Pencil Cave			1614	1621							
Lime Shells			1621	1627							
Pencil Cave			1627	1630							
Big Lime			1630	1801							
Injun Sand			1801	1847							
Slate			1847	1854	SIM						
Shells			1854	1860							
Slate&Shells			1860	2240	Gas-Sh.						
Shale	Brown		2240	2254	2136						
Berea Sand			2254	2270							
Slate&Shells			2254	2270							
Slate & Shells			2270	3475							
Shale	Brown		3475	3500							
Slate&Shells			3500	3875							
Shale			3875	4025							
Slate	White		4025	4420							
Shale	Light		4420	4500	Gas-Sh.						
Shale	Dark		4500	4540	4462						
Shale	Brown		4540	4831	SIM						
Corniferous Lime			4831	4937	SIM						
Oriskany			4937	4980	Gas-						
Lime			4980	4989	1st Pay						
Oriskany			4989	5002	4946-49						
Lime			5002	5012	SIM						

WEST VIRGINIA DEPARTMENT OF MINES

OIL AND GAS DIVISION

WELL RECORD

Gas Well

Permit No. Kan-400

Kenna Quad.

CASING & TUBING

CORRECTED

Company	Columbian Carbon Co.	14"	43'6"	43'6"
Address	Box 1240, Charleston, W.Va.	10 $\frac{3}{4}$ "	507'9"	Pulled
Farm	Mary A. Fisher (C-1239)	Acres 25.5	8 5/8	1873'9"
Location	Tuppers Creek	6 5/8	4888'10"	4888'10"
Well No.	1 (GW-397)	Elev. 840.21 df	3 $\frac{1}{2}$ "	62'2"
District	Poca	County Kanawha	2 3/8	5034'11"
Surface	Mary A. Fisher			5034'11"
Oil & Gas	Mary A. Fisher, c/o Mrs. John Huddleston			
Address	1599 Quarrier St., Charleston, W.Va.			
Coal	Alex M. Bruen, 19 E. 83rd St.,			
Address	New York City			
Drilling	Commenced 8-15-37			
	Completed 11-11-37			
Date Shot	11-11-37	Depth 4959-4984		
Volume	2,425,000 Cu. Ft.			
Rock Press.	1000# 1 hr.			
Oil	Show 560'			

Formation Color ^{Hor} TOP Base Result Formation Color ^{Hor} TOP Base Result

CORRECTED RECORD

Corniferous Lime	4845	4951	Gas
Oriskany	4951	4994	1st pay
Line Break	4994	5003	4960-
Oriskany	5003	5016	4963
Lime	5016	5026	
TOTAL DEPTH		5026	SIM
			Gas
			2nd Pay
			4969-
			4983

CEMENT RECORD: 9/16/37 Cemented around 8 5/8" casing. Cemented with 100 sacks Alph cement, 80 sacks mixed with 2% Aquagel and 20 sacks neat. 5 sacks Aquagel mixed with 5% solution run ahead of cement. Pipe went back to bottom O.K.

10/22/37- Cemented 6 5/8" casing. Used 25 sacks Alpha cement. 9' spacer ran on bottom to stop plug. 10' cement left in pipe.

(Mosely, Cementer- Halliburton Oil Well Cementing Co.)