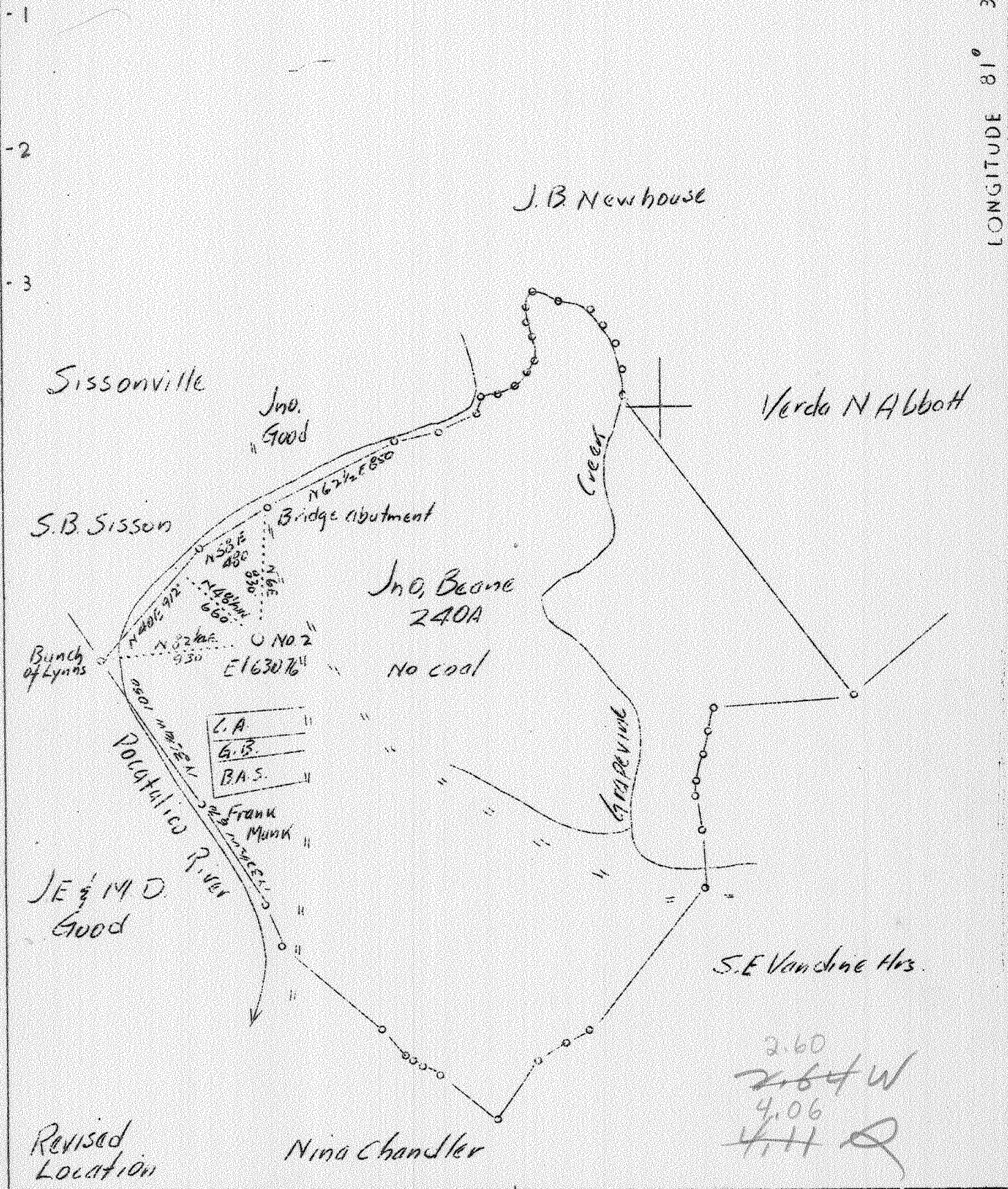


LATITUDE 38° 35'

LONGITUDE 81° 35'



Company	South Penn Oil Co.
Address	411-7th Ave., Pittsburgh, Pa.
Farm	S. S. Beane
Tract	Acres 240 Lease No. 61408
Well (Farm) No.	2
Serial No.	
Quadrangle	Kenna
County	Kanawha
District	Poca
Engineer	E. C. Tabler
Engineer's Registration No.	
File No.	Drawing No.
Date	8-10-37
Scale	1" = 800'

STATE OF WEST VIRGINIA  
 Department of Mines  
 OIL & GAS DIVISION  
 CHARLESTON

WELL LOCATION MAP  
 File No. KAN-408D

+ Denotes location of well on U. S. Topographic Maps, scale 1 to 62,500 latitude and longitude lines being represented by border lines as shown

— Denotes one inch spaces on border line of original tracing.

WEST VIRGINIA DEPARTMENT OF MINES

OIL AND GAS DIVISION

W E L L R E C O R D

Permit No. Kan-408

Gas Well

Kenna Quad.

CASING & TURNING

Company	South Penn Oil Co.	16	59'3" (Pulled 7"
Address	411 Seventh Ave., Pittsburgh, Pa.	13 3/8	308'5" "8'10" "
Farm	S.S. Beane Acres 240	10	1461 Pulled 596
Location	Poca River & Grapevine	8 5/8	1682'1"
Well No.	2 Elev. <u>630.76</u> 980.49	7"	4720
District	Poca County Manawha		
Surface	Jno. Beane, Sissonville, W.Va.		CASING CEMENTED: 8 5/8"
Mineral	J.J. Beane, Sissonville, W.Va.		1671'
Drilling	Commenced Aug. 28, 1937		7"
	Completed Dec. 10, 1937		
Volume	20,419,000 Cu.Ft.	4670'	
Rock Press.	1660 # 1 hrs.		

Formation	Color	110'	TOP	Base	Result	Formation	Color	110'	TOP	Base	Result
Red Rock			0	60		Gas					
Lime			60	100		Gas					
Red Rock			100	160		Gas					
Sand			160	200	Water						
Red Rock			200	240	170'	Gas					
Lime			240	280	H.F.						
Red Rock			280	290		Gas					
Slate	Grey		297	295							
Slate	Black		295	297		Gas					
Lime			297	310							
Slate			310	320		Gas					
Slate	Pink		320	325							
Lime			325	330		Gas					
Sand			330	450							
Slate & Shells			457	540		Gas					
Sand			540	615							
Lime			615	640							
Slate&Shells			640	700							
Lime			700	750							
Slate			750	795							
Lime			795	835							
Slate			835	855							
Sand			855	875							
Slate			875	955							
Salt Sand			955	1365	Gas						
Slate			1365	1367	957						
Maxon Sand			1367	1410	Insf.						
Little Lime			1410	1436	to test.						
Pencil Cave			1436	1440							
Big Lime			1440	1603	Water						
Big Injun			1603	1635	1035'						
Slate&Shells			1635	3120	2 Bails.						
Lime			3120	3135	pr.hr.						
Slate&Shells			3135	3205							
Lime			3205	3235	Gas						
Slate&Shells			3235	3277	1507						
Shale	Brown		3277	3382	6/10 W.						
Slate&Shells			3382	3456	2" Ope.						
Shale	Brown		3456	3810	115,968						
Shale	White		3810	4300	cu.ft.						
Shale	Brown		4300	4510							
Shale	Black		4510	4624							
Lime Shells			4624	4628							
Slate	Black		4628	4649	Water						
Carniferous			4649	4756	1626						
Oriskany			4756		1/4 Bailer						
TOTAL DEPTH				4774	pr.hr.						

WEST VIRGINIA DEPARTMENT OF MINES  
OIL & GAS DIVISION  
W E L L R E C O R D

Permit No. Kan-408-D		Gas Well
Company	South Penn Natural Gas Company	CASING & TUBING
Address	Union Trust Bldg., Parkersburg, W.Va.	--
Farm	S.S. Beane Acres 240	--
Location	Poca River & Grapevine	
Well No.	2-D.D. Elev. 630.76	
District	Poca Kanawha County	
Surface	Jno. Beane, Sissonville, W.Va.	
Mineral	Same	
Commenced	Jan. 20, 1942	
Completed	Feb. 4, 1942	
Date Shot	Feb. 6, 1942 Depth 4755-4776 with 40 quarts	
Flow	23/10ths W in 3"	
Volume	455,000 C.F.	

Old Total Depth	4774 (4768 Steel Line)
Started to drill deeper at	4763 (Steel Line)
Oriskany	4763 4796
Lime <i>Oriskany</i>	4796 4811
Oriskany	4811 4826
Lime <i>Oriskany</i>	4826 4835
Total Depth	4835

Gas Test before deepening 24/10 W 3" Opng. 465,000 C.F.

No deepened pay  
Gas test before shot 23/10 W 3" Opng. 455,000 C.F.

Increased gas from 23/10 W 3" Opng. 455,000 to 30/10 W 3" Opng. 520,000 1 hr. A.S.  
18 hrs. A.S. (Clg. out) 33/10 W 3" Opng. 545,000 C.F.