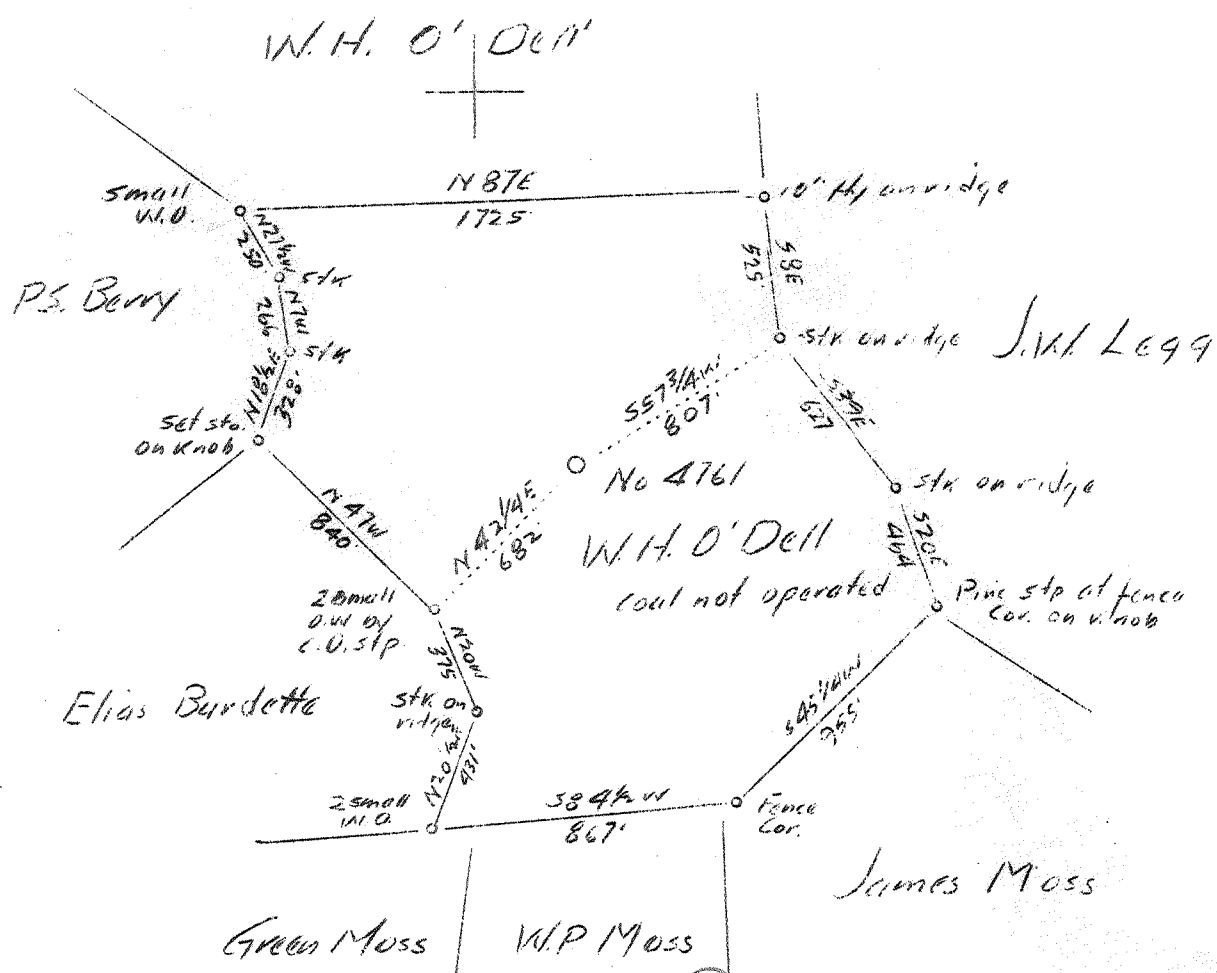


LATITUDE 38° 35'

LONGITUDE 81° 30'



ABD
10/45

4.52 W
3.09

P. 508 7 WC (2-0)

Company	United Fuel Gas Co.
Address	Charleston, W.Va.
Farm	W.H. O'Dell
Tract	Acres 80 Lease No. 40034
Well (Farm) No.	1 Serial No. 4761
Elevation (Spirit Level)	354.53'
Quadrangle	Kenna SE
County	Kanawha District Poca
Engineer	G.A. Cunningham
Engineer's Registration No.	659
File No.	64-71 Drawing No.
Date	July 20, 1937 Scale 1"=660'

STATE OF WEST VIRGINIA
Department of Mines
OIL AND GAS DIVISION
CHARLESTON

WELL LOCATION MAP
File No. KAN-431-D

Denotes location of well on United States Topographic Maps, scale 1 to 62,500, latitude and longitude lines being represented by border lines as shown.

Denotes one inch spaces on border line of original tracing.

✓ Deep well

WEST VIRGINIA DEPARTMENT OF MINES

OIL AND GAS DIVISION

WELL RECORD

Permit No. Kan-431

Gas Well

Kenna Quad.

CASING & TUBING

Company	United Fuel Gas Co.	10	588	588
Address	Charleston, W.Va.	8 $\frac{1}{2}$ "	1797	1797
Farm	W.H.O'Dell Acres 80	7" O.D.	4877	4877
Location	Possum Br. of Poca River			
Well No.	4761	Elev. 854.53		
District	Poca	County Kanawha		
Surface	George Spradling, Sissonville, W.Va.			
Mineral	W.H.O'Dell, Charleston, W.Va.			
Drilling	Commenced Aug. 17, 1937			
	Completed Jan. 26, 1938			
Volume	15,767,000 Cu.Ft.			
Date Shot	Not shot			
Rock Press.	Not taken			

Formation	Color	Hor	TOP	Base	Result	Formation	Color	Hor	TOP	Base	Result
Gravel			0	20							
Sand			20	100							
Slate			100	160							
Red Rock			160	210							
Slate			210	225							
Red Rock			225	265							
Slate			265	280							
Red Rock			280	300							
Slate			300	375							
Sand			375	405							
Red Rock			405	410							
Slate			410	475							
Sand			475	530							
Slate			530	550							
Sand			550	570							
Slate			570	700							
Sand			700	735							
Slate			735	775							
Lime			775	815							
Sand			815	840							
Slate			840	860							
Lime			860	900							
Slate			900	920							
Sand			920	945							
Slate			945	1055							
Sand			1055	1075							
Slate			1075	1145							
Salt Sand			1145	1537	Water						
Slate			1537	1542	2 blrs.						
Little Lime			1542	1574	1160'						
Big Lime			1574	1747	Full						
Injun Sand			1747	1786	at 1185						
Slate & Shells			1786	3300	Barren 2210±						
Lime			3300	3615							
Shale	Brown		3615	4100							
Slate			4100	4400							
Shale	Brown		4400	4865							
Corniferous			4865	4976							
Oriskany Sand			4976	4993	Gas						
					4983						
TOTAL DEPTH				4993							

WEST VIRGINIA DEPARTMENT OF MINES
OIL & GAS DIVISION
W E L L R E C O R D

Permit No. Kan-481-D
Kenna Quad.

Gas Well

CASING & TUBING

Company	United Fuel Gas Co.	
Address	Charleston, W. Va.	No change in casing
Farm	W. H. O'Dell ACRES 80	
Location	Possum Br. of Poca River	
Well No.	4761 ELEV. 854.53	
District	Poca - Kanawha County	
Surface	George Spradling, Sissonville, W. Va.	
Mineral	W. H. O'Dell, Charleston, W. Va.	
Commenced	August 8, 1940	
Completed	Aug. 13, 1940	
Volume	Gas Well	
Rock Pressure	-	
Water	-	

DEEPENING RECORD:

Original Depth	4993
Oriskany	4976 5005
Total Depth	5005