

1

2

3

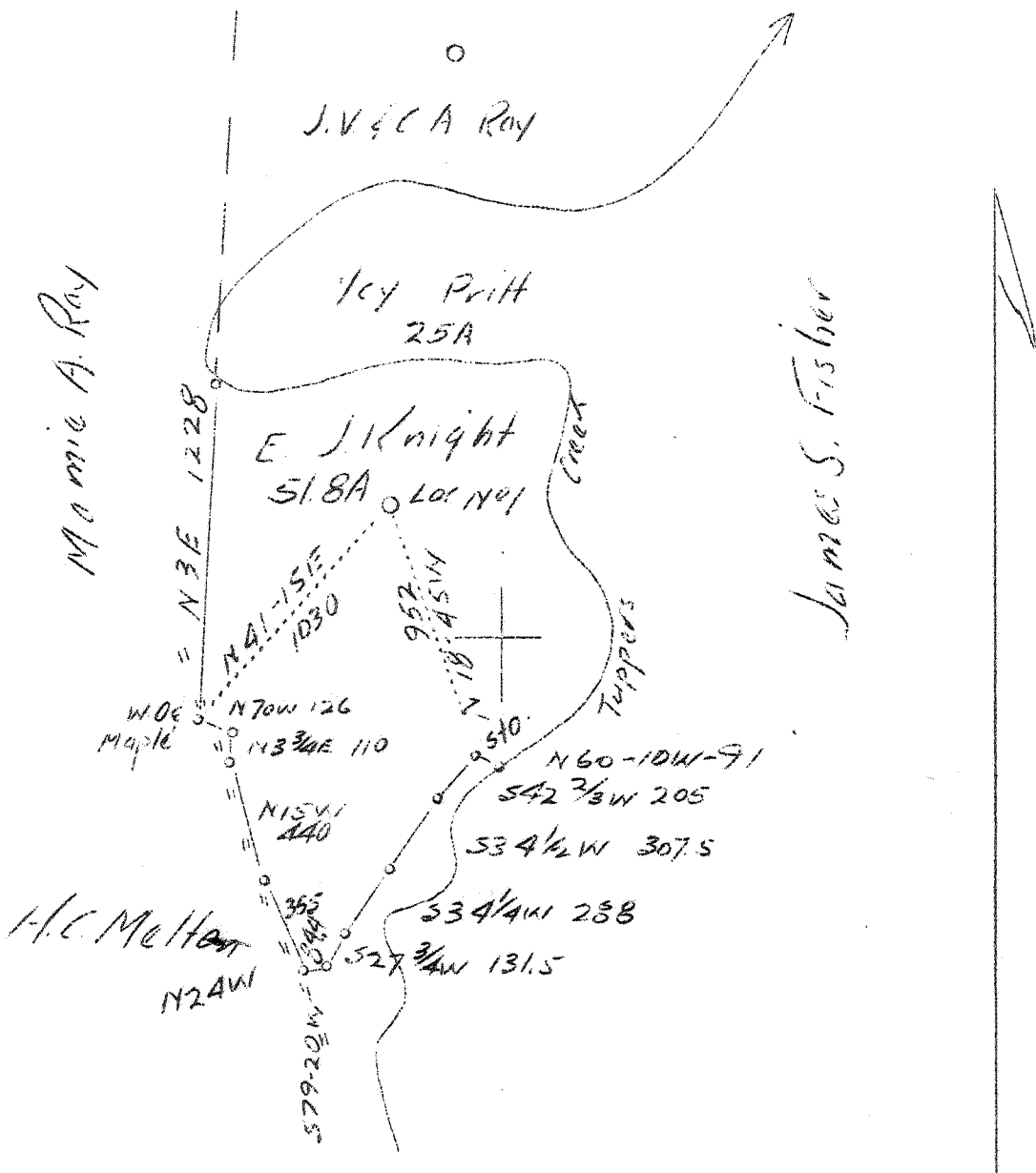
LATITUDE 38° 35'

LONGITUDE 81° 35'

1

2

3



3.52 W
5.06 R

Company United Carbon Co. & Mullins
 Address Gas Co. Charleston, W. Va.
 Farm Ednah J. Knight et al
 Tract Acres 76.8 Lease No. _____
 Well (Farm) No. 1 Serial No. _____
 Elevation (Spirit Level) 660'
 Quadrangle Kenna
 County Kanawha District Poca
 Engineer C. B. Wilson
 Engineer's Registration No. 494
 File No. _____ Drawing No. _____
 Date 8-11-37 Scale 1" = 660'

STATE OF WEST VIRGINIA
 Department of Mines
 OIL & GAS DIVISION
 CHARLESTON

WELL LOCATION MAP
 File No. KAN-445

+ Denotes location of well on U. S. Topographic Maps, scale 1 to 62,500, latitude and longitude lines being represented by border lines as shown.
 — Denotes one inch spaces on border line of original tracing.

WEST VIRGINIA DEPARTMENT OF MINES

OIL & GAS DIVISION

WELL RECORD

Permit No. Kan-445

Gas Well

Kenna Quad.

CASING & TUBING

Company	Mullins Gas Co. & United Carbon Co.		
Address	Box 28 & Box 1475, Charleston, W.Va.		
Farm	Edna J. Knight	ACRES 76.8	
Location	Tuppers Creek		13" Wood Conductor
Well No.	One	ELEV. 634.5	10-3/4 OD 295' 11" Cem. in
District	Poca	County Kanawha	8-5/8 OD 1676 " "
Surface & Mineral	-		7 OD 4646 " "
Drilling commenced	Aug. 24, 1937		2 tubing 4740
Drilling completed	Dec. 9, 1937		
Shot	-		
Open Flow	-		
Volume	-		
Rock Pressure	1745 lbs.	hrs.	
Water	-		

Formation Color ^{Hor} 5 TOP Base Result Formation Color ^{Hor} 5 TOP Base Result

Formation	Color	Hor	5	TOP	Base	Result	Formation	Color	Hor	5	TOP	Base	Result
Sand				0	12								
Slate				12	87								
Sand				87	100								
Slate				100	160								
Sand				160	190								
Slate				190	325								
Sand				325	395								
Slate & Shells				395	410								
Sand				410	432								
Slave Shells				432	860								
Sand				860	887								
Slate				887	894								
Sand				894	915								
Slate				915	945								
Sand - Salt				945	1189	Water	1050'						
Slate				1189	1192								
Sand - Salt				1192	1423								
Little Lime				1423	1438								
Pencil Cave				1438	1445								
Big Lime				1445	1607	Gas	1530'						
Injun Sand				1607	1654								
Slate Shells				1654	2047								
Brown Shale				2047	2070								
Berea Sand Shells				2070	2085								
Slate & Shells				2085	3735	Gas	3660'						
Shale - Brown				3735	3855								
Slate				3855	4428								
Brown Shale				4428	4655	Steel Line	4642'						
Lime				4632	4732								
Criskany				4732									
First Gas to bottom				4735	4745								
TOTAL DEPTH					4745								
						Gas in 7" O.D. - - -		4735'	3/10 M.	3,023,000			
								4736'	8/10 M.	4,989,000			
								4739'	10/10 M.	5,579,000			
								4740'	20/10 M.	7,883,000			
								4741'	22/10 M.	8,269,000			
						FINAL GAUGE							
						AFTER BLOWING OPEN 24 HOURS		12/10 M.	6,101,000				