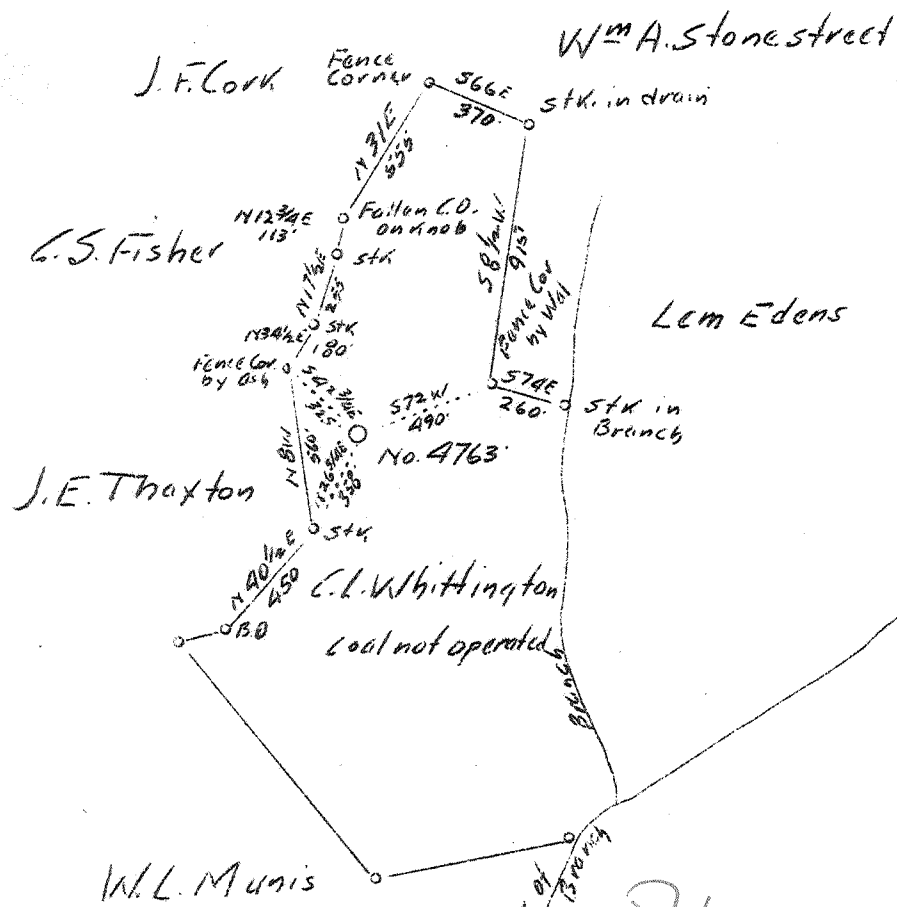


1 2 3 LATITUDE 38° 30' LONGITUDE 81° 35'



ABD
11/43
3.04 W
2.12

P. 562 2 C (J-5)

Company	United Fuel Gas Co.
Address	Charleston, W. Va.
Farm	C.L. Whittington
Tract	Acres 52 Lease No. 40329
Well (Farm) No.	1 Serial No. 4763
Elevation (Spirit Level)	960.97'
Quadrangle	Pocahontas ⁷⁵ Charleston (NC)
County	Kanawha District Pocahontas
Engineer	G.A. Cunningham
Engineer's Registration No.	659
File No.	60-67 Drawing No.
Date	Aug. 13, 1937 Scale 1"=660'

STATE OF WEST VIRGINIA
Department of Mines
OIL AND GAS DIVISION
CHARLESTON

WELL LOCATION MAP

File No. KAIN-447

+ Denotes location of well on United States Topographic Maps, scale 1 to 62,500, latitude and longitude lines being represented by border lines as shown.

— Denotes one inch spaces on border line of original tracing.

606192 ✓ Deep Well

WEST VIRGINIA DEPARTMENT OF MINES

OIL AND GAS DIVISION

W E L L R E C O R D

Permit No. Kan. 447

Gas Well

Charleston Quad.

CASING & TUBING

Company	United Fuel Gas Co.	14"	666	666
Address	Charleston, W.Va.	10	1331	1331
Farm	C.L. Whittington Acres 51	8 1/2"	1959	1959
Location	Crack Rock Br. of Tappers Creek	7" O.D.	4972	4972
Well No.	4763 Elev. 960.97	CASING CEMENTED: 7" O.D.		
District	Poca County Kanawha	4972'.		
Surface	C.L. Whittington, Sissonville, W.Va.	8 5/8"		
Mineral	Same	Casing at 1959'.		
Drilling	Commenced Sept. 28, 1937			
	Completed Jan. 19, 1938			
Date Shot	Not shot			
Volume	4,989,000 Cu.Ft.			
Rock Press.	Not given			

Formation	Color	Top	Base	Result	Formation	Color	Top	Base	Result
Surface			80		Shale	Brown	4621	4663	
Coal		80	82		Slate	White	4663	4680	
Slate & Sand		82	180		Shale	Brown	4680	4962	4972'
Sand		180	218		Corniferous Lime		4962	5062	S.L.M.
Red Rock		218	300		Oriskany Sand		5062	5100	
Sand		300	320		TOTAL DEPTH			5100	
Slate		320	343						Gas 5072
Red Rock		343	370						Gas 5075
Slate		370	400						Gas 5077
Red Rock		400	459						-5082
Slate		459	489						-5082
Sand		489	537		5" tested	4/10 M. thru 2"			Gas -5082
Slate & Lime		537	614						-5087
Coal		614	616		6' tested	30/10 W. thru			Gas 5087
Sand		616	632		7" O.D. 24# casing.				-5093
Slate		632	670		7' tested	8/10 M. thru 7"			Gas 5093
Slate & Shells		670	765		O.D. 24# casing.				-5100
Sand		765	790						
Slate & Shells		790	830						
Sand		830	850						
Slate & Shells		850	1050						
Lime		1050	1090						
Sand		1090	1210						
Salt Sand		1210	1380						
Slate & Shell		1330	1385						
Salt Sand		1385	1580	Water					
Slate		1580	1600	1285-					
Maxon		1600	1708	1290					
Little Lime		1708	1734	HFV					
Pencil Cave		1734	1745						
Lime Shell		1745	1748	Water					
Pencil Cave		1748	1750	1355-					
Big Lime		1750	1915	1370					
Big Injun Sand		1915	1945	HFV					
Slate		1945	1955						
Lime Shell		1955	1964						
Slate & Shell		1964	2358						
Berea Grit Sand		2358	2374						
Slate & Shell		2374	3560						
Shale	Brown	3560	3640						
Slate & Shell		3640	3875						
Shale	Brown	3875	3900						
Slate & Shell		3900	3942						
Shale	Brown	3942	3980						
Slate & Shell		3980	4000						
Shale	Brown	4000	4200						
Slate	White	4200	4621						