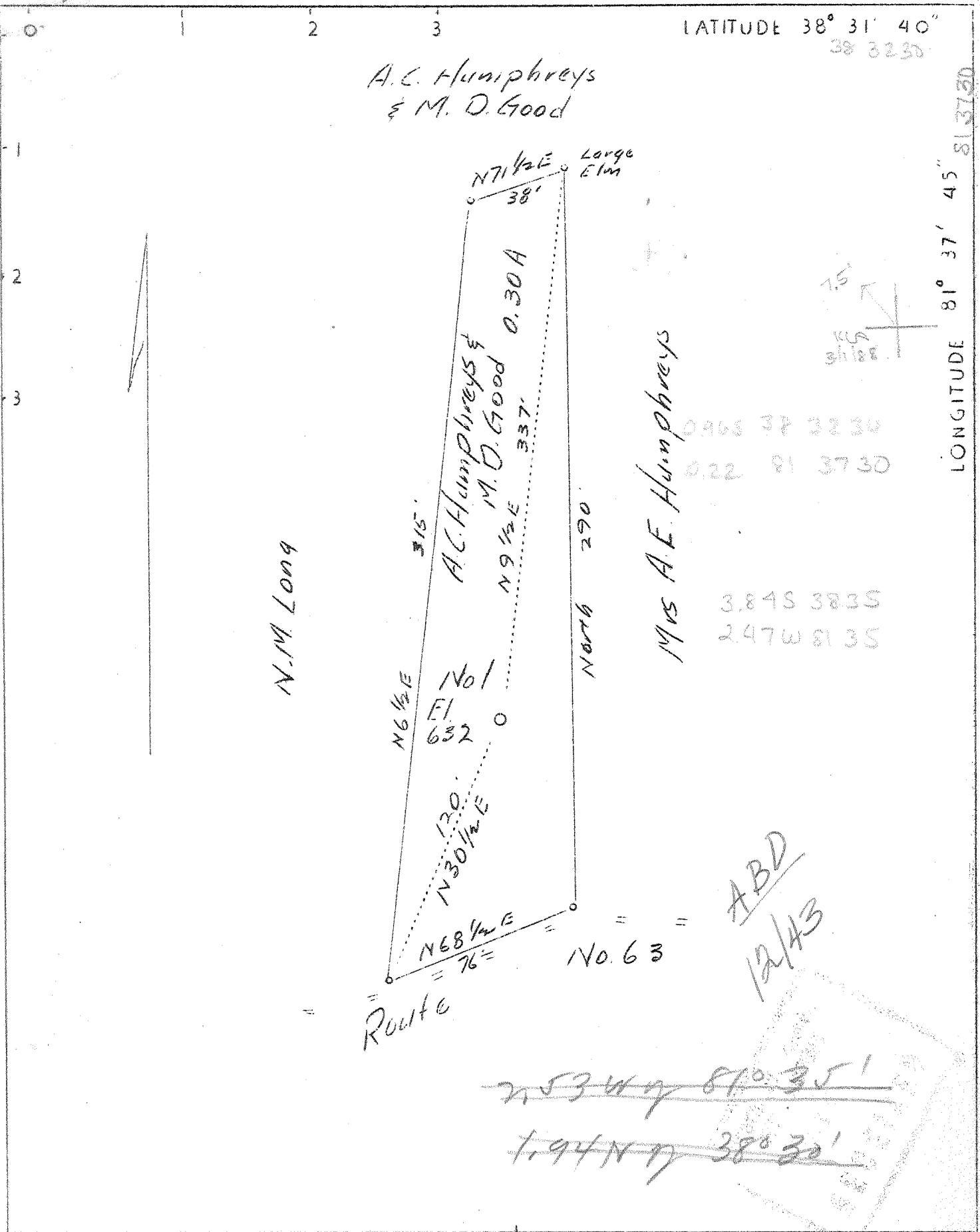


LATITUDE 38° 31' 40"
38 3230

A.C. Humphreys
& M. D. Good

LONGITUDE 81° 37' 45" 81 3730



0966 38 3230
022 81 3730
384S 383S
247W 813S

N.M. Long

Mrs A.E. Humphreys

Route

ABD
12/43

~~253W 81° 35'~~
~~194N 38° 30'~~

Company Hays Oil & Gas Co.
 Address Clendennin, W.Va.
 Farm A.C. Humphreys & M.D. Good
 Tract 1 Acres .30 Lease No. _____
 Well (Farm) No. 1 Serial No. _____
 Quadrangle Kenna
 County Kanawha Sissonville 7.5'
 District Poca
 Engineer A.E. Price, C.E.
 Engineer's Registration No. 816
 File No. _____
 Date Sept. 9, 1937 Scale 1"=50'

STATE OF WEST VIRGINIA
 Department of Mines
 OIL AND GAS DIVISION
 CHARLESTON

WELL LOCATION MAP
 File No. KAN-467

+ Denotes location of well on United States Topographic Maps, scale 1 to 62,500, latitude and longitude lines being represented by border lines as shown.
 — Denotes one inch spaces on border line of original tracing.

517
457
266

WEST VIRGINIA DEPARTMENT OF MINES
OIL AND GAS DIVISION

W E L L R E C O R D

Permit No. Kan-467

Gas Well

Kenna Quad.

CASING & TUBING

Company	Hays Oil & Gas Co., Inc.	13	52	52
Address	Glendenin, W.Va.	10	325	325
Farm	A.C. Humphreys	Acres 40	3 5/8	1679
Location	Poca River		7" O.D.	4678
Well No.	1	Elev. 628'		
District	Poca	County Kanawha		
Surface	A.C. Humphreys, et al, Sissonville, W.Va.			
Drilling	Commenced	Sept. 23, 1937	CASING CEMENTED: 8 5/8"	
	Completed	Dec. 12, 1937	150'.	7" Cemented 100'.
Volume	10,000,000 Cu.Ft.			
Rock Press.	1775# 3 hrs.			

Formation	Color	Hor S	Top	Base	Result	Formation	Color	Hor S	Top	Base	Result
Soil			0	15							
Clay			15	35							
Quick Sand			35	50							
Red Rock			50	100							
Slate			100	125	Water						
Red Rock			125	205	110'						
Sand			205	225							
Red Rock			225	300							
Sand			300	380							
Slate			380	450							
Sand			450	510							
Slate & Shells			510	720							
Sand			720	775							
Slate			775	850							
Sand			850	885							
Slate			885	940							
Salt Sand			940	1090	Water						
Break			1090	1095	1040						
Salt Sand			1095	1375							
Break			1375	1380							
Maxon Sand			1380	1420							
Little Lime			1420	1442							
Break-Pencil			1442	1445							
Big Lime			1605	1620							
Injun Sand			1620	1665							
Break			1665	1668							
Lime	Black		1668	1790	Sh.Oil						
Slate & Shells			1790	2065	1699'						
Berea Grit			2065	2100	Sh.Gas						
Slate & Shells			2100	3285	2068						
Shale	Brown		3285	3315							
Lime			3315	3550							
Shale Shell			3550	3910							
Slate & Shells			3910	4410							
Shale	Brown		4410	4600							
Slate			4600	4620	Gas						
Coffee Shale			4620	4663	4772-						
Corniferous Lime			4663	4770	4784						
Oriskany Sand			4770	4784	33/10 M.						
					7" O.D.						
TOTAL DEPTH				4784	10,000,000 C.F.						
WELL CONTINUING TO PAY WHEN DRILLING STOPPED.											