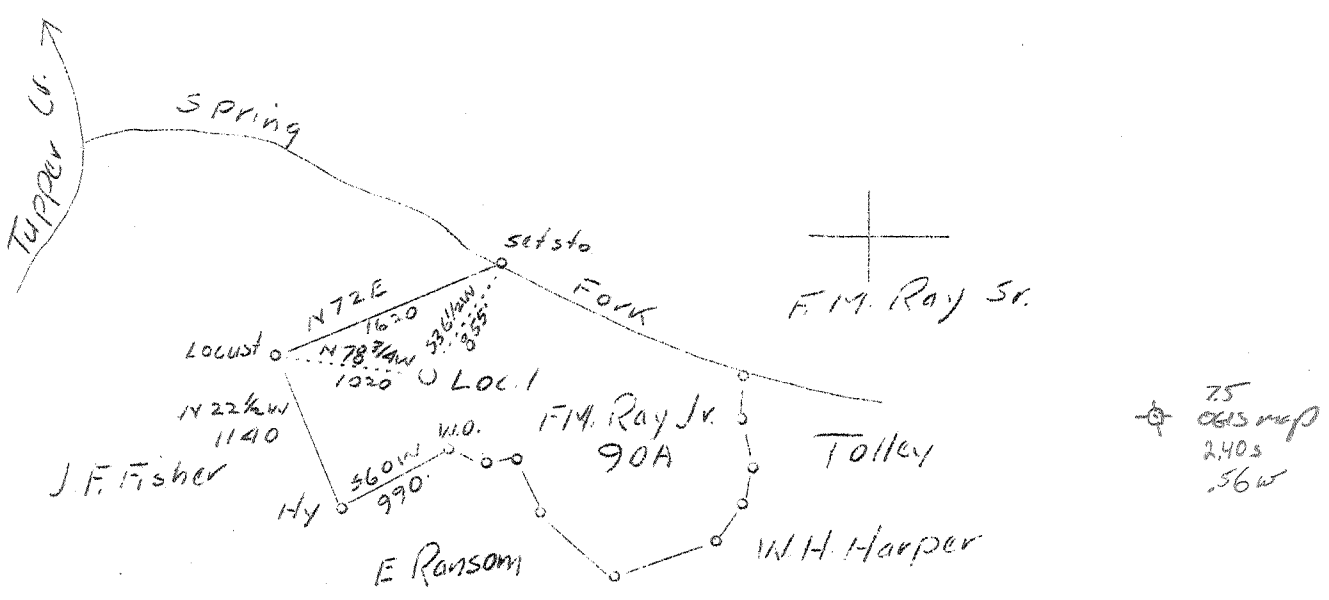


28° 32' 30"

LATITUDE 38° 35'

LONGITUDE 81° 35'

81° 37' 30"



ABD  
10/42  
2.99 W  
5.41 S

R 532      8 SC (1-5)

Company	R.E. McCabe (P.O. Box 332)
Address	Security Bldg., Charleston, W.Va.
Farm	F.M. Ray, Jr.
Tract	90 Acres
Lease No.	
Well (Farm) No.	1
Serial No.	
Elevation (Spirit Level)	800' Stadia
Quadrangle	Kenna
County	Kanawha
District	a
Engineer	C.E. Krebs
Engineer's Registration No.	9
File No.	11 495
Drawing No.	
Date	9-6-37
Scale	1" = 1320'

STATE OF WEST VIRGINIA  
Department of Mines  
OIL AND GAS DIVISION  
CHARLESTON

WELL LOCATION MAP  
File No. KAN-468

+ Denotes location of well on United States Topographic Maps, scale 1 to 62,500, latitude and longitude lines being represented by border lines as shown.

— Denotes one inch spaces on border line of original tracing.

✓ Deep Well

WEST VIRGINIA DEPARTMENT OF MINES  
OIL AND GAS DIVISION

WELL RECORD

Permit No. Kan 468

Gas Well

Kenna Quad.

CASING & TUBING

Company	R.E.McCabe	13	31	31
Address	Box 332, Charleston, W.Va.	10	642	642
Farm	F.M.Ray, Jr. Acres 90	8 $\frac{1}{2}$	1761	1761
Location	Spring Fork, Tupper's Creek	7"	4777	4777
Well No.	One Elev. 800	2	4950	4950
District	Poca County Kanawha			
Surface	F. M.Ray, Jr., Sissonville, W.Va.			
Mineral	F.M.Ray, Jr., Sissonville, W.Va.			
Drilling	Commenced 10-4-37			
	Completed 1-17-38			
Date Shot	Not shot			
Volume	5,252,000 Cu.Ft.			
Rock Press.	1850# 12 hrs.			

Casing Cemented: 7",  
4777' .

Formation	Color	Hor	TOP	Base	Result	Formation	Color	Hor	TOP	Base	Result
Surface-Clay			0	30							
Red Rock			30	50							
Slate & Shells			58	100							
Sand			100	120							
Lime & Slate			120	220							
Sand			220	240							
Slate			240	350							
Sand			350	370							
Slate & Shells			370	420							
Lime			420	460							
Slate & Shells			460	495							
Sand			495	630							
Slate & Shells			630	700							
Sand			700	828							
Slate & Shells			828	845							
Lime			845	920							
Slate & Shells			920	945							
Lime			945	1015							
Salt Sand			1015	1370	Water						
Slate			1370	1375	1105						
Salt Sand			1375	1425	Water						
Maxon			1425	1475	1156						
Slate			1475	1480							
Little Lime			1480	1515							
Pencil Cave			1515	1520							
Big Lime			1520	1690							
Injun			1690	1725							
Slate & Shells			1725	1820							
Weir Sand & Shells			1820	1945							
Slate Blue			1945	1960							
Slate & Shells White			1960	1980							
Lime			1980	2000							
Slate & Shells			2000	2160							
Berea Sand			2160	2170							
Slate & Lime			2170	3810							
Shale Brown			3810	3960							
Big White			3960	4425							
Shale Brown			4425	4753							
Corniferous			4761	4863							
Oriskany			4863	4883							
TOTAL DEPTH				4883	Gas Pay						
					4880						