

New Location 25
 Drill Deeper
 Abandonment Issued 9/10/72

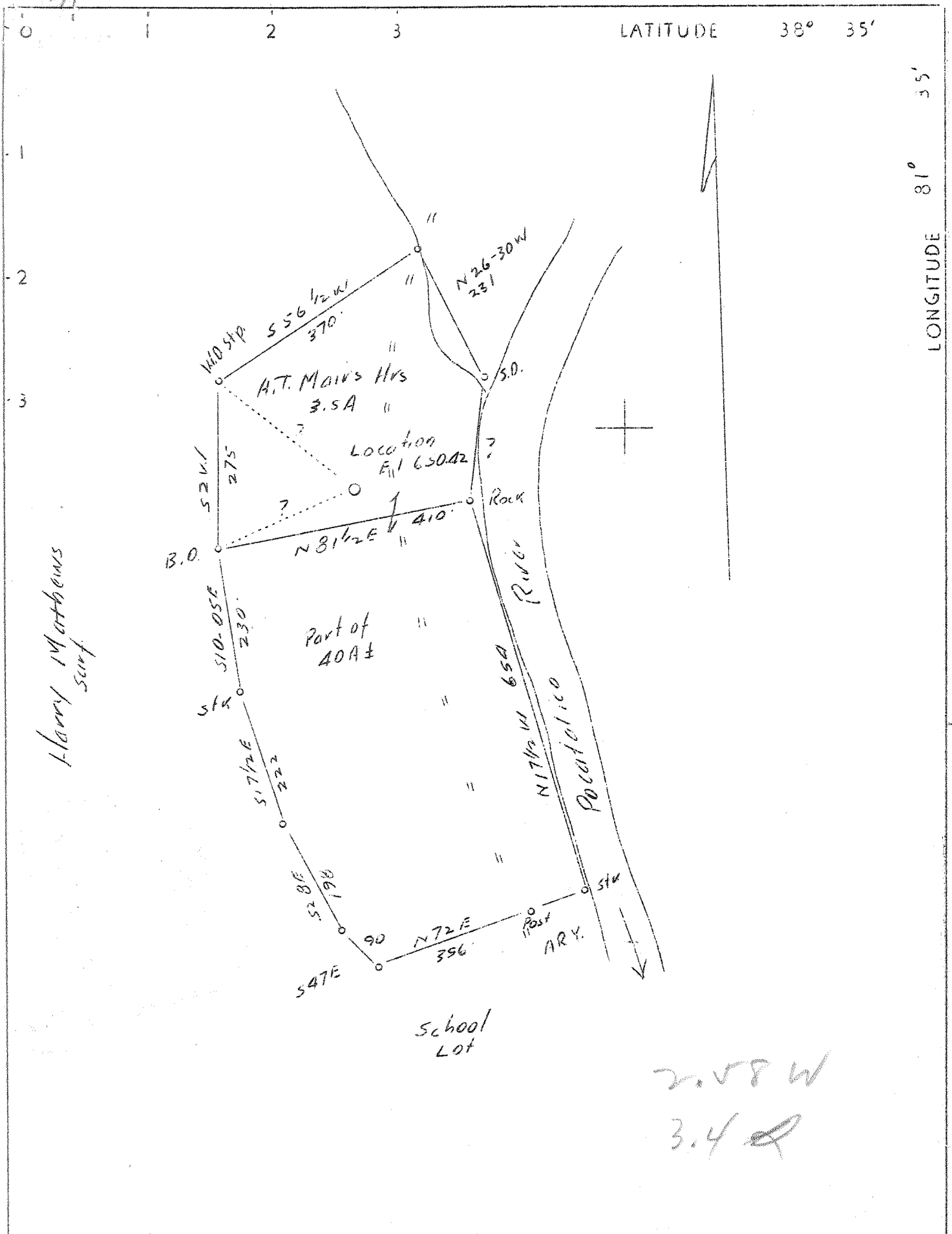
Company COL. GAS TRANS. CORP.
LINDEN DRILLING Co
 Address 710 SILEY AVE. CHARLESTON, W.Va.
 Farm A.T. MAIRS HRS. ET AL.
 Tract PART OF Acres 40+- Lease No. _____
 Well (Farm) No. 1 Serial No. 7023 (11004)
 Elevation (Spirit Level) 650.42
 Quadrangle KENNA
 County KANAWHA District POCA
 Engineer John D. Moore
 Engineer's Registration No. 159
 File No. _____ Drawing No. _____
 Date SEPT. 6, 1937 Scale 1" = 200'

STATE OF WEST VIRGINIA
 DEPARTMENT OF MINES
 OIL AND GAS DIVISION
 CHARLESTON

WELL LOCATION MAP
 FILE NO. KAN-472-PP

+ Denotes location of well on United States Topographic Maps, scale 1 to 62,500, latitude and longitude lines being represented by border lines as shown.

- Denotes one inch spaces on border line of original tracing.



Harry Matthews
Scrip

2.58 W
3.4

Company Linden Drilling Co
 Address 918-Bigley Ave, Charleston
 W.Va.
 Farm A.T. Mairs Hrs et al
 Tract Part of 40 A. plus Lease No-
 Well No. One Serial No
 Elevation (Spirit Level) 650.42
 Quadrangle Kenna
 County Kanawha District Poca
 Engineer John D. Moore
 Engineer's Registration No. 159
 File No. Drawing No
 Date 9-6-37 Scale 1" - 200'

STATE OF WEST VIRGINIA
 Department of Mines
 OIL AND GAS DIVISION
 Charleston

WELL LOCATION MAP
 File No. KAN-472

+ Denotes location of well on U.S. Topographic Maps, scale 1 to 62,500 latitude and longitude lines being represented by border lines as shown.

— Denotes one inch spaces on border line of original tracing.

WEST VIRGINIA DEPARTMENT OF MINES

OIL AND GAS DIVISION

W E L L R E C O R D

Kan- 472

Gas Well

Quad.

CASING & TUBING

Company	Linden Drilling Co.	10	424	424
Address	918 Bigley Ave., Charleston, W.Va.	8 $\frac{1}{4}$	1720	1720
Farm	A.T.Mairs Heirs, et al Acres	35	6 5/8	4722
Location	Poca River	2		4817
Well No.	1 Elev. 646.17			
District	Poca County Kanawha			Perf. bottom 6'
Surface	A.T.Mairs Heirs et al,			
Address	506 Hall St., Charleston, W.Va.			
Mineral	A.T.Mairs Heirs et al, Charleston, W.Va.			
Drilling	10-7-37 Commenced			CASING CEMENTED: 4722',
	2-17-38 Completed			7 O.D., 2/5/38 .
Volume	Twenty Million Cu.Ft.			
Rock Press.	1675 # 24 hrs.			

Formation	Color	Hor	TOP	Base	Result	Formation	Color	Hor	TOP	Base	Result
Surface			0	120							
Slate and Shells			120	144							
Red Rock			144	174							
Lime			174	218							
Red Rock			218	236							
Slate and Shells			236	300							
Lime			300	340							
Slate and Shells			340	408							
Sand			408	455							
Lime			455	502							
Sand			502	600							
Slate	Black		600	630							
Sand			630	725							
Slate			725	790							
Sand			790	835							
Slate & Shells			835	885							
Sand			885	915							
Slate			915	1033	Water						
Salt Sand			1033	1465	1105-						
Slate			1465	1471	1171						
Little Lime			1471	1493							
Pencil Cave			1493	1501							
Big Lime			1501	1600							
Injun			1600	1700							
Slate			1700	1708							
Lime			1708	1730							
Slate & Lime			1730	2118							
Wier Sand			2118	2148							
Slate & Shells			2148	3800							
Shale	Brown		3800	4000							
Slate & Shells			4000	4325							
Slate			4325	4410							
Shale	Brown		4410	4630							
Slate	White		4630	4642							
Shale	Brown		4642	4673							
Lime			4673	4676							
Shale			4676	4709	S.L.						
Corniferous Lime			4709	4816	4709						
Criskany			4816	4828							
					Gas						
					4818-						
TOTAL DEPTH				4828	4828						
					S.L.						
					4804						



-35
v 8-8

RECEIVED
NOV 06 1984

DIVISION OF OIL & GAS
DEPARTMENT OF ENERGY

State of West Virginia
Department of Mines
Oil and Gas Division

Date 5-30-84
Operator's
Well No. 7023
Farm A. T. Mairs
API No. 47-039-0472-PP

59-60-71

WELL OPERATOR'S REPORT
OF
DRILLING, FRACTURING AND/OR STIMULATING, OR PHYSICAL CHANGE

WELL TYPE: Oil ___ / Gas X / Liquid Injection ___ / Waste Disposal ___ /
(If "Gas," Production ___ / Underground Storage ___ / Deep ___ / Shallow X)

LOCATION: Elevation: 646.17 Watershed Poca River
District: Poca County Kanawha Quadrangle Sissonville

COMPANY Columbia Gas Transmission Corporation

ADDRESS P. O. Box 1273, Charleston, WV

DESIGNATED AGENT J. L. Weekley

ADDRESS P. O. Box 1273, Charleston, WV

SURFACE OWNER A. T. Mairs

ADDRESS _____

MINERAL RIGHTS OWNER A. T. Mairs

ADDRESS _____

OIL AND GAS INSPECTOR FOR THIS WORK _____

ADDRESS _____

PERMIT ISSUED 9-19-72

DRILLING COMMENCED 10/8/73

DRILLING COMPLETED 10/16/73

IF APPLICABLE: PLUGGING OF DRY HOLE ON
CONTINUOUS PROGRESSION FROM DRILLING OR
REWORKING. VERBAL PERMISSION OBTAINED
ON _____

Casing Tubing	Used in Drilling	Left in Well	Cement fill up Cu. ft.
Size 20-16 Cond.			
13-10"			
9 5/8			
8 5/8	1720	1720	To surface
7	4722	1704	
5 1/2			
4 1/2	1541	1541	100 sks.
3			
2			
Liners used			

GEOLOGICAL TARGET FORMATION Big Lime Depth 1600 feet
Depth of completed well 1765 feet Rotary ___ / Cable Tools ___
Water strata depth: Fresh ___ feet; Salt ___ feet
Coal seam depths: _____ Is coal being mined in the area? No

OPEN FLOW DATA

Producing formation Big Lime Pay zone depth 1600 feet
Gas: Initial open flow _____ Mcf/d Oil: Initial open flow _____ Bbl/d
Final open flow 5,000 Mcf/d Final open flow _____ Bbl/d

Time of open flow between initial and final tests _____ hours

Static rock pressure 400 psig (surface measurement) after 48 hours shut in
(If applicable due to multiple completion--)

Second producing formation _____ Pay zone depth _____ feet
Gas: Initial open flow _____ Mcf/d Oil: Initial open flow _____ Bbl/d
Final open flow _____ Mcf/d Oil: Final open flow _____ Bbl/d

Time of open flow between initial and final tests _____ hours

Static rock pressure _____ psig (surface measurement) after _____ hours shut in

DETAILS OF PERFORATED INTERVALS, FRACTURING OR STIMULATING, PHYSICAL CHANGE, ETC.
 Plugged back to 1765'
 Cement 4871' to 4700'.
 Gel 4700' to 3900'
 Cement 3900' to 3800'
 Gel 3800' to 1765'
 Baker Plug set @ 1765'.
 Perforated 8-5/8" casing @ 1675'
 & cement to surface.
 Ran 1541' of 4 1/2" casing on full
 flow packer. Cemented with 100
 sacks cement.

Perforated 4 1/2" casing at 1640'-4 holes,
 1600' - 4 holes, 1588'-4 holes, 1560'-
 4 holes.
 Treated with 500 gallons 15% HCL
 1500 gallons 10% HCL

WELL LOG

FORMATION	COLOR	HARD OR SOFT	TOP FEET	BOTTOM FEET	REMARKS Including indication of all fresh and salt water, coal, oil and gas

(Attach separate sheets as necessary)

Columbia Gas Transmission Corporation

Well Operator

By:

Date: May 30, 1984

Note: Regulation 2.02(i) provides as follows:
 "The term 'log' or 'well log' shall mean a systematic
 detailed geological record of all formations, including
 coal, encountered in the drilling of a "