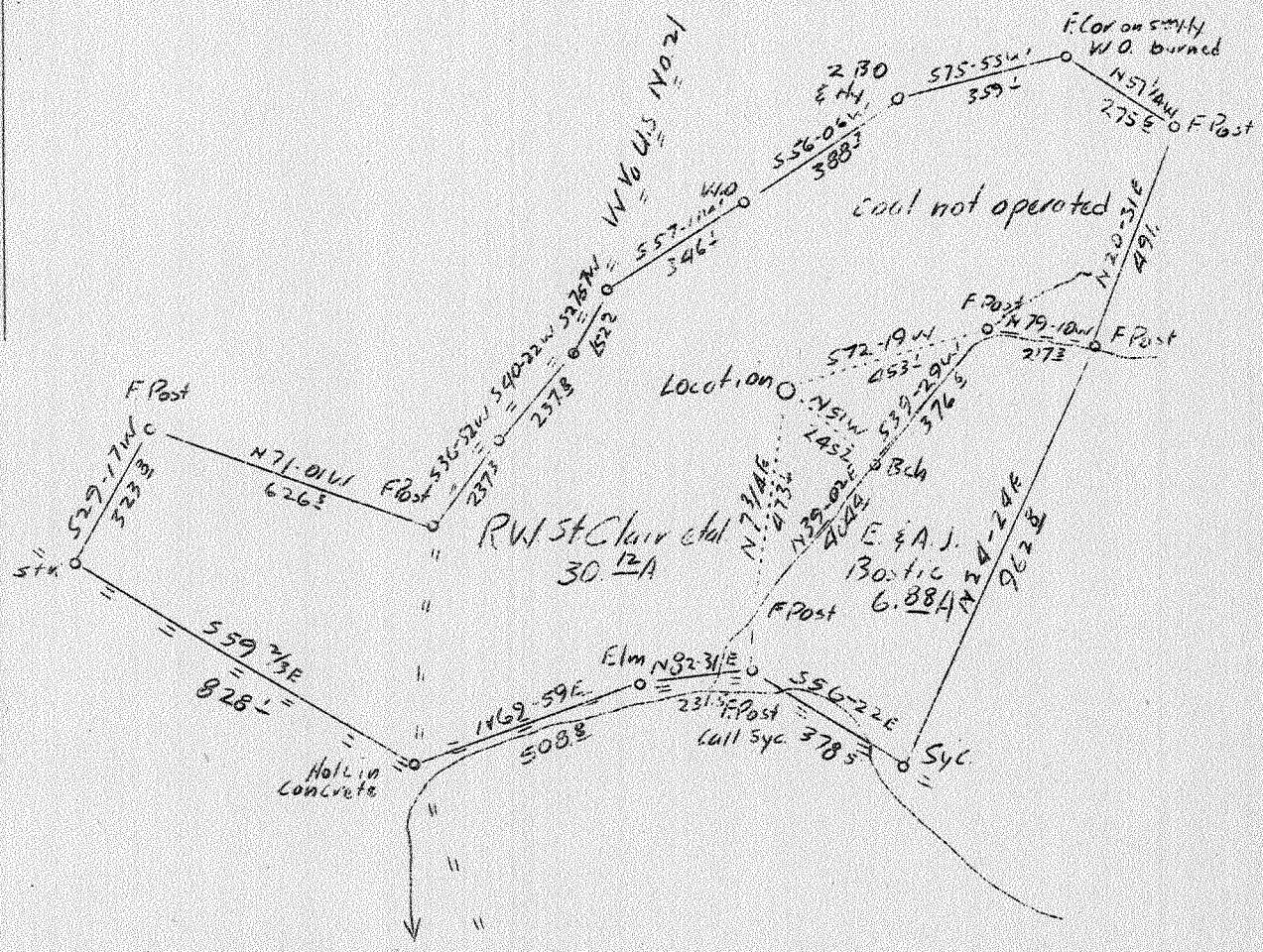


0
1
2
3



(263 - Oriskany chart)

ASD
9/48

?

4.71 W
1.59 8

Company	W.Va. Gas Corp. & Guy B. Ray
Address	401 Union Bldg., Charleston, W.Va.
Farm	R.W. St. Clair et al
Tract	One Acres 37 Lease No. W.V400
Well (Farm) No.	1 Serial No. 0-28
Elevation (Spirit Level)	736.28
Quadrangle	Charleston (21 W)
County	Kanawha District Union
Engineer	Robert S. Hyde
Engineer's Registration No.	646
File No.	3 Drawing No. W.O.213
Date	Sept. 21, 1937 Scale 1"=400'

STATE OF WEST VIRGINIA
 Department of Mines
 OIL AND GAS DIVISION
 CHARLESTON

WELL LOCATION MAP

File No. KAN-479

+ Denotes location of well on United States Topographic Maps, scale 1 to 62,500, latitude and longitude lines being represented by border lines as shown.

-- Denotes one inch spaces on border line of original tracing.

R.W. St. Clair et al no. 1 (0-28)

6-6-192

WEST VIRGINIA DEPARTMENT OF MINES

OIL AND GAS DIVISION

W E L L R E C O R D

Permit No. Kan-479

Gas Well

Charleston Quad.

CASING & TUBING

Company	Guy B. Ray, & W. Va. Gas Corp.	10	553'1	0
Address	Charleston, W. Va.	3	1834'8"	
Farm	R. W. St. Clair Acres 37			
Location	Branch of Tappers Creek			PACKER
Well No.	1 Elev. 736.28			
District	Union County Kanawha	Kind		
Surface	R. W. St. Clair et al, Sissonville, W. Va.	Size	3"	
Mineral	R. W. St. Clair et al, Sissonville, W. Va.	Depth	1694'4"	
Drilling	Commenced 10-8-37			
	Completed 11-23-37	Perf. top	1813	
Volume	830 M. Cu. Ft.	Perf. bottom	1823	
Rock Press.	690# 24 hrs.			

Formation	Color	Hor	Top	Base	Result	Formation	Color	Hor	Top	Base	Result
Slate&Shells			0	50	Water						
Sand			50	65	50'						
Red Rock			65	85							
Slate&Shells			85	210							
Sand			210	260							
Red Rock			260	300							
Slate & Lime Shells			300	440							
Red Rock			440	450							
Slate			450	470							
Sand			470	485							
Slate	White		485	507							
Lime Shell			507	512							
Slate	White		512	530							
Little Dunkard			530	563							
Slate			563	573							
Sand			573	588							
Slate			588	610							
Lime			610	650							
Slate	Black		650	690							
Slate	White		690	780							
B. Dunkard Sand			780	815							
Slate	Black		815	835							
Slate&Lime	White		835	930							
Slate	Black		930	1090							
Gas Sand			1090	1150							
Sand			1150	1556							
Slate	Blue		1556	1564							
Lime Shell			1564	1570							
Shale, Shell			1570	1600							
Little Lime			1600	1624							
Pencil Cave			1624	1632							
Big Lime			1632	1783							
Slate			1783	1784							
Sand			1784	1787							
Slate Shell			1787	1816							
Big Injun			1816	1823	Gas						
TOTAL DEPTH				1823	Pay						
					1818-						
					1821'						

