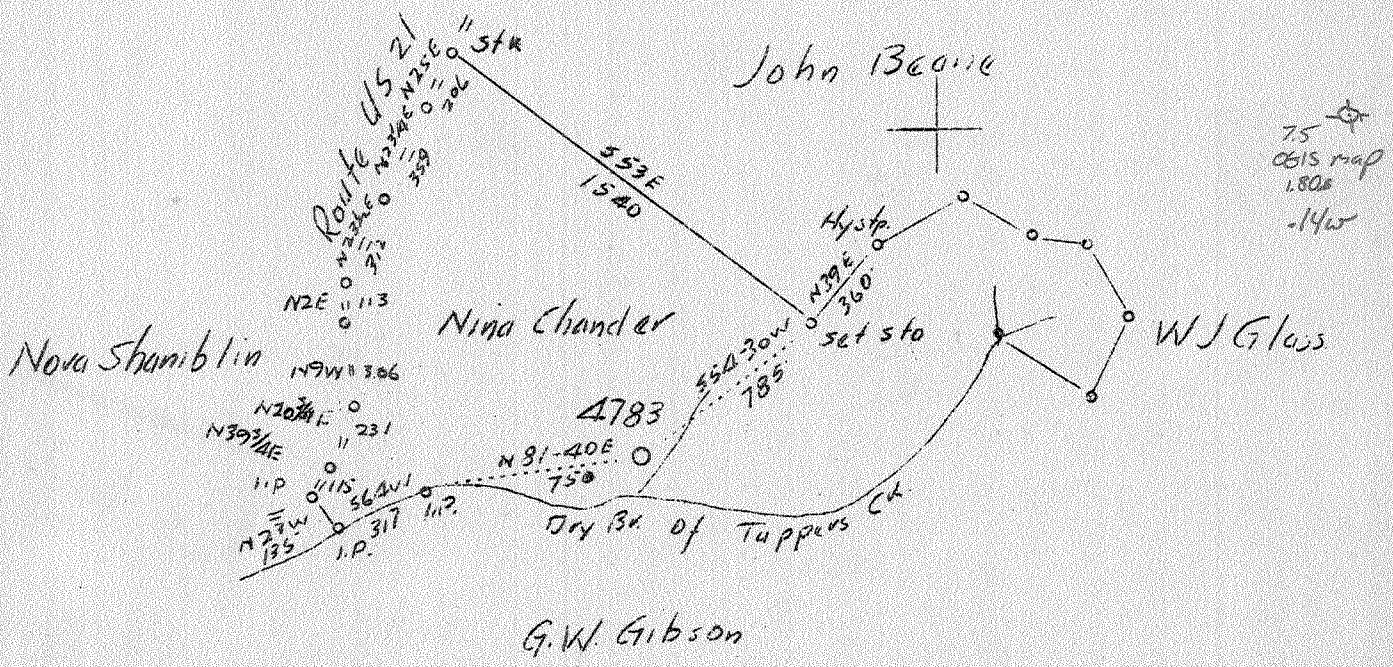


38° 32' 30"

LATITUDE 38° 35'

LONGITUDE 81° 35'

81° 37' 30"



(271 - Oriskany chart)

ABD
8/46

2.51 W
4.82 S

Company United Fuel Gas Co.	STATE OF WEST VIRGINIA Department of Mines OIL AND GAS DIVISION CHARLESTON
Address Charleston, W.Va.	
Farm Nina Chandler	WELL LOCATION MAP File No. <u>KAN-487D</u>
Tract Acres 53 Lease No. 42297	
Well (Farm) No. 1 Serial No. 4783	
Elevation (Spirit Level)	
Quadrangle Kenna (86.)	
County Pocahontas District Kanawha	
Engineer G.A. Cunningham	
Engineer's Registration No. 659	+ Denotes location of well on United States Topographic Maps, scale 1 to 62,500, latitude and longitude lines being represented by border lines as shown. — Denotes one inch spaces on border line of original tracing.
File No. 62-69 Drawing No.	
Date Oct. 4, 1937 Scale 1"=660'	

Nina Chandler no. 1 (4783)

6-6 ✓ 102

WEST VIRGINIA DEPARTMENT OF MINES
OIL & GAS DIVISION
W E L L R E C O R D

Permit n-487-D
Quad.

Gas Well

CASING & TUBING

Company	United Fuel Gas Co.	13	485	485
Address	Box 1256, Charleston, W. Va.	10	1525	1525
Farm	Nina Chandler, et al ACRES 53	8-1/4	1819	1819
Location	Dry Branch of Tappers Creek	7	4766	4766
Well No.	4783 ELEV. 762.96			
District	Poca - Kanawha County			
Surface & Mineral	Mrs. Nina Chandler, Charleston, W. Va.			
Commenced	Feb. 26, 1941	Coal at:	457'	48"
Completed	March 5, 1941			
Shot	Not shot			
Volume	Gas Well			
Rock Pressure	-			
Fresh Water	645-681			
Salt Water	1095-1150			

Clay	0	15	
Red Rock	15	170	
Sand, white	170	200	
Slate, white	200	310	
Sand, white	310	330	
Slate	330	395	
White Sand	395	457	
Coal	457	461	
Slate&Shells	461	575	
White Sand	575	600	
Slate&Shells	600	645	
Sand	645	681	W 645-681
Slate	681	727	
Lime	727	762	
Sand	762	797	
Slate	797	993	
Sand	993	1026	
Slate	1026	1036	
Salt Sand	1036	1482	W 1095
Little Lime	1482	1520	W 1150
Big Lime	1520	1683	
Injun	1683	1750	Show O&G
Blue Slate	1750	1814	1735-1740
Lime	1814	1840	
Slate&Shells	1840	2140	
Lime	2140	2290	
Slate&Shells	2290	2700	
Blue Slate	2700	2800	
Slate&Shells	2800	3045	
White Slate	3045	3375	
Brown Shale	3375	3415	
Slate&Shells	3415	3790	
Brown Shale	3790	3940	
White Slate&Shells	3940	4405	
Brown Shale	4405	4629	
Blue Slate	4629	4649	
Black Shale	4649	4752	
Cornif. Lime	4752	4855	
Oriskany Sand	4855	4864	Gas 4857 - 4862
Orig. Total Depth	4864		

DRILLED DEEPER - 2/26/41 to 3/5/41

Oriskany Sand	4864	4886	Gas 4880-4883
Final Depth		4886	