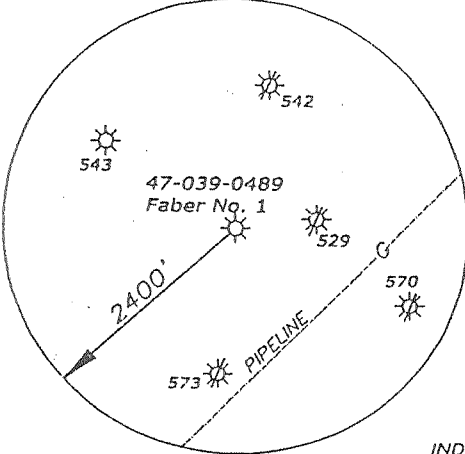


LINE	BEARING	DISTANCE
L1	S 01°06' W	242.6
L2	S 19°58' E	268.2



SURVEY NOTES

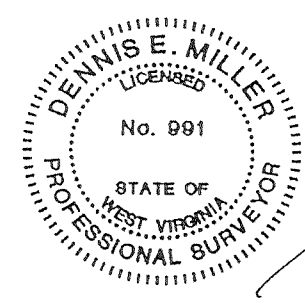
1. Ties to points based on Magnetic North 3/12/02.
2. Parcel ownership was obtained from the Kanawha County Assessors Office in March, 2002. All adjoiners & surface information shown hereon are listed to more clearly relate the well location to it's surroundings.
3. Wells shown within the 2400' radius spot circle are current as of 3/13/02 per Oil & Gas Information Services well location mapping.
4. Lease boundary information taken from a well plat dated October 5, 1937 for the Della M. Faber et al 21 Acres.

RDZJN 1450 File: w1450_plat.dwg

INDICATES WELL SPOT LOCATION ON U.S.G.S. 7.5' TOPOGRAPHIC MAPS

R. D. ZANDE & ASSOCIATES, INC.
 1 Moore Avenue
 Buckhannon, WV 26201
 (304) 472-7140

DATE March 11, 2002
 SCALE 1" = 400' ACCURACY 1/200
 OPERATORS Faber No. 1
 WELL No. 47 - 039 - 0489W
 API No. _____



I, the undersigned, hereby certify that this plat is correct to the best of my knowledge and belief and shows all the information required by law and the rules issued and prescribed by the Division of Environmental Protection.

[Signature]
 P.S. #991 03/11/02

TYPE OF WELL
 GAS:
 Production Storage *Deep *Shallow

STATE OF WEST VIRGINIA
 DIVISION OF ENVIRONMENTAL PROTECTION
 OFFICE OF OIL AND GAS

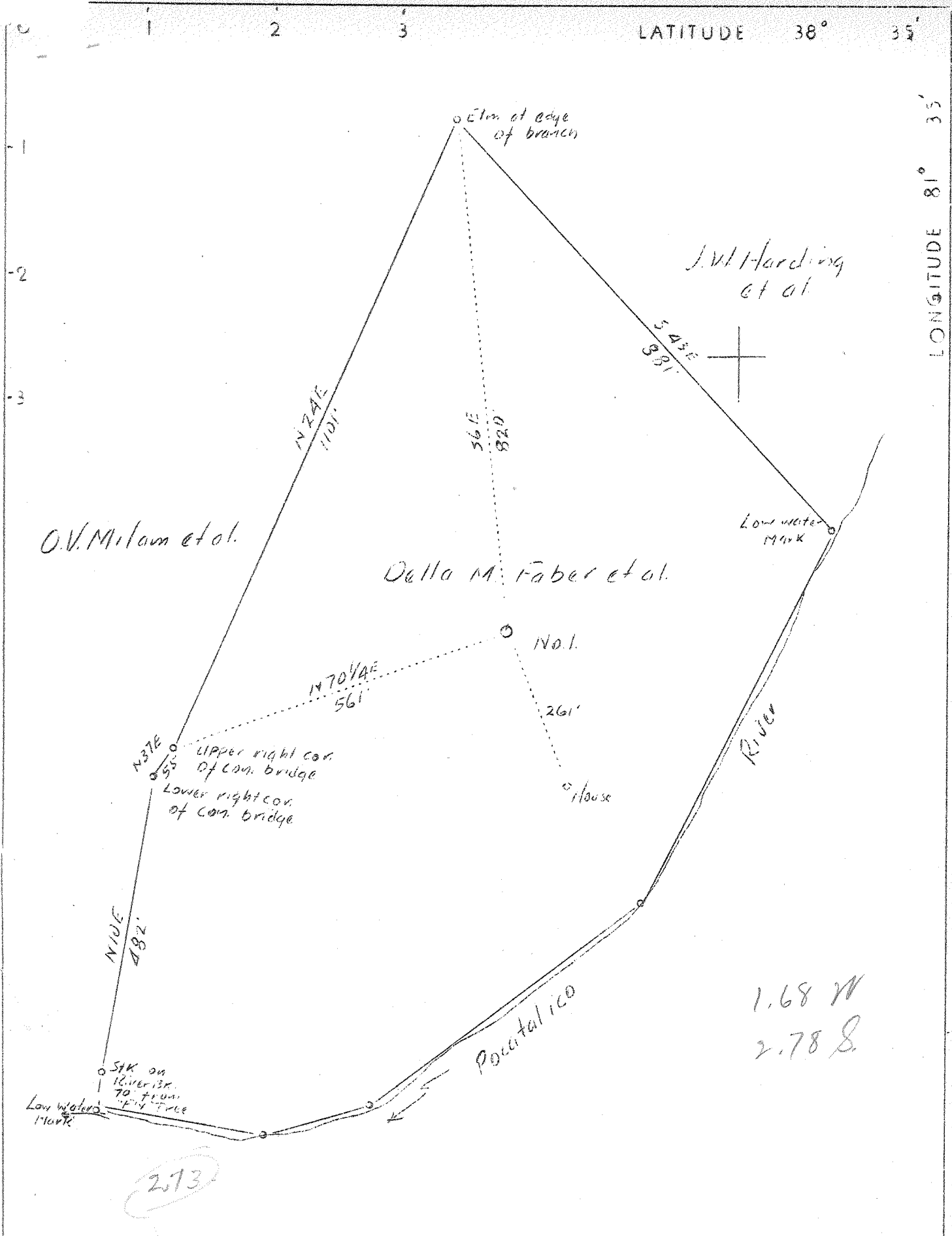
PROPOSED WORK ON LOCATION
 Drill — Drill Deeper — Redrill — Convert —
 Fracture/ Stimulate — *Plug off to Formation —
 Perforate New Formation — Plug and Abandon —
 Clean/ Replug — Other Than Above
 If "Other" Please see Details below —
 DETAILS OF PROPOSED WORK Rework
 *TARGET FORMATION Oriskany
 ESTIMATED DEPTH 4895'

WELL AREA & LOCATION INFORMATION
 ELEVATION SOURCE Benchmark Elevation 638'
 WATERSHED Pocatalico River
 ELEVATION 690' DISTRICT Poca
 COUNTY Kanawha TOPO QUAD Romance 7.5'
 SURFACE OWNER O.K. and Dorothy M. Faber
 ACREAGE 17 Acres±
 ROYALTY OWNER O.K. and Dorothy M. Faber Et Al
 LEASE ACREAGE 21 Acres±

WELL OPERATOR Mountain "V" Oil and Gas, Incorporated COMPANY AGENT Mike Shaver
 ADDRESS P.O. Box 470 Bridgeport, WV 26330 ADDRESS P.O. Box 470 Bridgeport, WV 26330

JUN 14 2002

Copyright © (2002) R.D. Zande & Associates, Inc. M 6810 NW



Company	Mullins Gas Co.
Address	Charleston, W.Va.
Farm	Della M. Faber et al
Tract	Acres 21 Lease No.
Well (Farm) No.	1 Serial No.
Elevation (Barometer)	660 - 694.62 top - LA 2/1/87
Quadrangle	Kenna (88)
County	Kanawha District Pocah
Engineer	G.A. Cunningham
Engineer's Registration No.	659
File No.	Drawing No.
Date	Oct. 5, 1937 Scale 1" = 200'

STATE OF WEST VIRGINIA
 Department of Mines
 OIL AND GAS DIVISION
 CHARLESTON

WELL LOCATION MAP
 File No. KAN-489

+ Denotes location of well on United States Topographic Maps, scale 1 to 62,500, latitude and longitude lines being represented by border lines as shown.

— Denotes one inch spaces on border line of original tracing.

WEST VIRGINIA DEPARTMENT OF MINES

OIL AND GAS DIVISION

WELL RECORD

Permit No. Kan-489

Gas Well

Kenna Quad.

CASING & TUBING

Company	Mullins Gas Co.	13 Wood Conductor
Address	P.O. Box 28, Charleston, W.Va.	10 3/4" 486'10"
Farm	Della M. Faber Acres 21	8 5/8" 1784'
Location	Poca River	7" 4785' Cemented in
Well No.	1	2 (Tub.) 4890
District	Poca County Kanawha	
Surface	Not given	
Mineral	Not given	
Drilling	Commenced Dec. 18, 1937	
	Completed Feb. 26, 1938	
Volume	20,103,000 Cu.Ft. (Drilled 12' in Sand.)	Kind Parmco
Rock Press.		Size Not given
		Depth Not given

PACKER

Formation Color ^{Top} ^{Base} Result Formation Color ^{Top} ^{Base} Result

Formation	Color	Top	Base	Result	Formation	Color	Top	Base	Result
Surface		0	40						
Shale	Blue	40	85						
Red Rock		85	220	Water					
Shale-Gritty		220	240						
Red Rock		240	480						
Sand		480	600						
Shale	Blue	660	668						
Lime	Black	668	680						
Sand	White	680	760						
Shale	Black	760	803						
Sand	White	803	853						
Shale	Black	853	1045						
Lime		1045	1058						
Shale	Brown	1058	1070						
Lime		1070	1087	Hole					
Sand-Salt		1087	1494	Full					
Slate	Blue	1494	1500	Water					
Little Lime		1500	1531	1203					
Pencil Cave		1531	1537						
Big Lime		1537	1641	More					
Keener Sand		1641	1648	Water					
Lime		1648	1671	1237					
Injun Sand		1671	1751						
Shale	Blue	1751	1784						
Lime		1784	1833						
Slate & Shells		1833	2139						
Sand		2139	2152	Little					
Shale & Lime		2152	3383	Gas					
Shale	Brown	3383	3424	2142'					
Shale & Shells		3424	3670						
Shale	Brown	3670	3682	Steel					
Shale	White	3682	3763	Line					
Shale	Brown	3763	3997	4785'					
Shale		3997	4456	&					
Shale	Bl	4456	4751	4869'					
Shale	Bl	4751	4776						
Lime		4776	4879						
Oriskany Sand		4879							
TOTAL DEPTH			4895	Drilled 12' in sand- Gas 20,103,000					