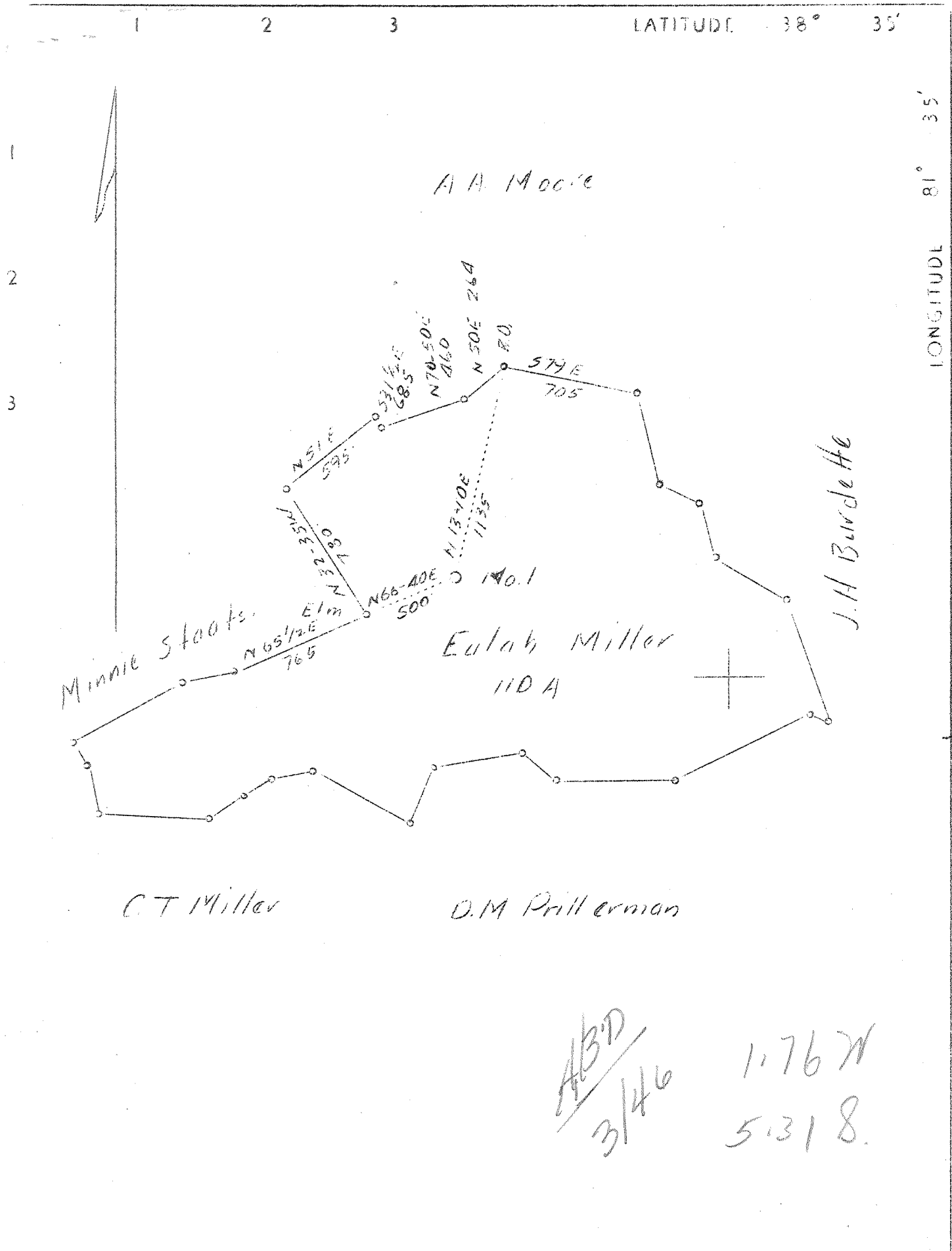


LATITUDE 38° 35'

LONGITUDE 81° 35'



ABD
3/46 1.76 W
 5.318.

| | | |
|-----------------------------|---|---|
| Company | United Fuel Gas Co. & United Carbon Co. | STATE OF WEST VIRGINIA Department of Mines OIL AND GAS DIVISION CHARLESTON WELL LOCATION MAP File No. <u>KAN-490</u> + Denotes location of well on United States Topographic Maps, scale 1 to 62,500, latitude and longitude lines being represented by border lines as shown. — Denotes one inch spaces on border line of original tracing. |
| Address | Charleston, W.Va. | |
| Farm | Eulah Miller | |
| Tract | Acres 110 Lease No. 2518 | |
| Well (Farm) No. | 1 Serial No. 726 | |
| Elevation (Spirit Level) | 886.9 | |
| Quadrangle | Kenna | |
| County | Kanawha District Poca | |
| Engineer | C.B. Wilson | |
| Engineer's Registration No. | 494 | |
| File No. | Drawing No. | |
| Date | Oct. 8, 1937 Scale 1"=660' | |

WEST VIRGINIA DEPARTMENT OF MINES
OIL AND GAS DIVISION

W E L L R E C O R D

Gas Well

Permit No. Kan-490

Kenna Quad.

C A S I N G & T U B I N G

| | | | | |
|-------------|----------------------------------|----------------|-------|--------------------------|
| Company | United Fuel Gas Co. | Conductor | 16 | |
| Address | Charleston, W.Va. | | 14 | 401 401 |
| Farm | Eulah Miller Acres 1/2-110 | | 10 | 1615 1615 |
| Location | Tuppers Creek | | 8 1/2 | 1813 1813 |
| Well No. | 4664 | | 7" | 4863 4863 |
| District | Poca | Elev. 881.84 | | |
| Surface | Eulah Miller, Sissonville, W.Va. | County Kanawha | | CASING CEMENTED: 8 5/8", |
| Mineral | Not given | | | 1813'. |
| Drilling | Commenced Nov. 24, 1937 | | | |
| | Completed March 25, 1938 | | | |
| Date Shot | Not given | | | |
| Volume | 8,269,000 Cu.Ft. | | | |
| Rock Press. | 1600# 48 Hrs. | | | |

| Formation Color ^{TOP} Base Result | | | | Formation Color ^{TOP} Base Result | | | | | |
|--|--------|------|------|--|--|------|------|--|---------|
| Rock | Yellow | 16 | 30 | Big Lime | | 1597 | 1600 | | |
| Sand | | 30 | 105 | Slate | | 1600 | 1606 | | |
| Slate | | 105 | 112 | Big Lime | | 1606 | 1751 | | |
| Red Rock | | 112 | 126 | Big Injun | | 1751 | 1806 | | |
| Slate | | 126 | 145 | Slate & Shells | | 1806 | 3460 | | |
| Sand | | 145 | 165 | Shale Brown | | 3460 | 3510 | | |
| Red Rock | | 165 | 170 | Slate & Shells | | 3510 | 3650 | | |
| Slate & Shells | | 170 | 200 | Shale Brown | | 3650 | 4050 | | |
| Red Rock | | 200 | 260 | Slate & Shells | | 4050 | 4545 | | |
| Slate & Shells | | 260 | 305 | Shale Brown | | 4545 | 4760 | | |
| Red Rock | | 305 | 320 | Slate White | | 4760 | 4788 | | |
| Slate | | 320 | 340 | Slate Black | | 4788 | 4847 | | |
| Red Rock | | 340 | 377 | Corniferous Lime | | 4847 | 4954 | | SLM |
| Sand | | 377 | 420 | Oriskany Sand | | 4954 | | | 4863 |
| Slate | | 420 | 445 | TOTAL DEPTH | | | 4968 | | Cable |
| Sand | | 445 | 520 | | | | | | Measurc |
| Slate & Shells | | 520 | 575 | | | | | | Gas |
| Sand | | 575 | 615 | | | | | | 4959 |
| Slate & Shells | | 615 | 670 | | | | | | Gas |
| Sand | | 670 | 760 | | | | | | 4959 |
| Slate | | 760 | 765 | | | | | | 4964 |
| Lime | | 765 | 780 | | | | | | 4964 |
| Slate & Shells | | 780 | 830 | | | | | | 4967 |
| Sand | | 830 | 850 | | | | | | Gas |
| Slate & Shells | | 850 | 925 | | | | | | 4964 |
| Sand | | 925 | 955 | | | | | | 4967 |
| Slate | | 955 | 995 | | | | | | Gas |
| Sand | | 995 | 1020 | | | | | | 4967 |
| Slate | | 1020 | 1070 | | | | | | Gas |
| Sand | | 1070 | 1110 | | | | | | 4967 |
| Slate | | 1110 | 1125 | | | | | | 4968 |
| Salt Sand | | 1125 | 1281 | Water | | | | | |
| Slate | | 1281 | 1290 | 12.10 | | | | | |
| Lime | | 1290 | 1300 | | | | | | |
| Salt Sand | | 1300 | 1450 | | | | | | |
| Slate | | 1450 | 1454 | | | | | | |
| Lime | | 1454 | 1466 | | | | | | |
| Maxon Sand | | 1466 | 1521 | | | | | | |
| Slate | | 1521 | 1523 | | | | | | |
| Sand | | 1523 | 1561 | | | | | | |
| Slate | | 1561 | 1571 | | | | | | |
| Little Lime | | 1571 | 1591 | | | | | | |
| Pencil Cave | | 1591 | 1597 | Sh. Gas | | | | | |
| | | | | 1785- No test | | | | | |
| | | | | Water | | | | | |
| | | | | 1795 | | | | | |